



SATURDAY, APRIL 18, 2026
WEYAUWEGA, WISCONSIN



MOSINEE WAUSAU THORP ANTIGO WAUPACA

YOUR PARTNERS ON THE JOB

swiderskiequipment.com

BUILT FOR JOBS THAT DON'T WAIT.

Bobcat brings the power, maneuverability and attachment versatility to tackle any job on your farm!

One machine....every chore....Bobcat delivers.



swiderskiequipment.com/Bobcat

39th Annual

WAUPACA-WAUSHARA

Show Opportunity Sale

REGISTERED HOLSTEIN PROJECT CALVES

SATURDAY, APRIL 18, 2026 • 12:00 NOON • WEYAUWEGA, WISCONSIN

LOCATED AT THE WAUPACA COUNTY FAIRGROUNDS

602 E South Street, Weyauwega, WI 54983

Sale Personnel

RYAN KROHLOW

Poynette, WI
920-639-5500
Auctioneer

KEVIN JORGENSEN

Waupun, Wisconsin
920-210-3992
Pedigrees

CHAD RYAN

Fond du Lac, Wisconsin
920-960-1449
Ringman

LYNN HARBAUGH

Marion, Wisconsin
920-420-1524
Ringman

BRANDON FERRY

Hilbert, Wisconsin
608-335-8861
Ringman

LEADSMEN & BARN CREW PROVIDED BY WAUPACA-WAUSHARA JUNIORS

BARN SUPERINTENDENT - KRISTA LUEDTKE - 920-779-0332

FITTING CREW SUPERINTENDENT - BRANDON SMITH - 715-509-0025

Donated items sale to benefit the Waupaca-Wausbara Junior Holstein Association. 5% discount on calves sold to Wisconsin Jr. Holstein Association members.

WAUPACA-WAUSHARA HOLSTEIN ASSOCIATION

SALE COMMITTEE MEMBERS

Justin Hintz, Sale Chair
715-851-0049

Alan Cordes
608-604-0639 Cell

Willis Gunst
920-858-9367 Cell

Dick Piechowski
414-731-0692 Cell

Jim Sattler
Carla Gunst

Dennis Roe
Dan Peterson

Matt Ewald
Tom Anderson
Aaron Hamm
Caleb Hamm
Grady Auer

*Online
Bidding*



Aaron Ray Tompkins
336-363-4639
www.cowbuyer.com

1

T & S KROHLOW, W SCHULTZ & Y PREDER
W4721 SHADY RD
BLACK CREEK, WI 54106
920-595-0396

MS TURBO FORTUNE-RED-ET

3291062672
Born: March 9, 2025
Spring Yearling

Maternal sister:

Ms Believe in Faith-Red-ET

- Reserve Junior Champion Royal Winter Fair R&W and Internaltional R&W Show 2025



MS BELIEVE IN FAITH-RED-ET

Golden-Oaks A Turbo-Red-ET

3209185768 TC TY TV TL TD
PTA +217M -51F -9P 85R 12/25
PTA +2.67T +1.87UDC +.84FLC 83R
GTPI +2066G

Trav-Annah Fantasy-Red-ET

3213061634 Excellent-94 EEEEE 2E TC TL TD
2-07 3x 365d 32840 4.1 1315 3.1 1009
1-08 2x 306d 17990 4.4 795 3.2 572
• Nom All-American R&W Milking Fall Yearling 2021
Sire: Jordy



TRAV-ANNAH FANTASY-RED-ET EX-94 2E

2nd thru 8th Dams

- Oakfield-Bro Fritz-Red-ET** EX-92 EEEEE
4-07 2x 365d 314-- 4.5 1406 3.4 1055
- Penn-Gate Rmarker Ferggy-ET** EX-93 3E RC
5-11 3x 365d 26780 4.2 1133 3.2 851
- Penn-Gate Skychief Finesse** EX-95 3E DOM
9-00 2x 365d 36760 3.8 1386 3.3 1227
Life: 2245d 161510 4.5 7311 3.5 5590
- Penn-Gate Starbuck Finesse** EX-94 3E GMD DOM
9-00 2x 365d 36760 3.8 1386 3.3 1227
Life: 2220d 166730 3.7 6252 3.5 5902
• Member Nom All-American Three Best Females
- Penn-Gate Elevation Flashie** EX-94 5E GMD DOM
7-01 2x 365d 32410 4.3 1382 3.2 1025
Life: 3872d 260540 4.4 11435 3.3 7091
- Penn-Gate Fond Matt Flossie G**
2-11 2x 305d 18720 4.0 747
- Hunterdon Astro Floris** EX-91 EVEE 3E DOM
8-06 2x 365d 21790 3.8 835

2

JOSEPH ENDRES
7980 COUNTY RD V
SAUK CITY, WI 53583
608-393-3624

CRYSTAL-STAR A BROOKLYN-ET

3301017904
Born: December 8, 2025
Winter Calf

Maternal sisters

- Ladinostar Dmn Buttercup-ET** EX-91 2E
4-02 2x 333d 29,150 4.2 1212 3.2 939
- Ladinostar Dman Brooke-ET** EX-91 2E
5-01 2x 365d 34570 4.1 1417 3.1 1055



RAINYRIDGE TALENT BARBARA EX-95 14*

Stantons Alligator-ET

CAN 3128769279 VG-85-CAN TR TP TE TY TV TL TD
PTA +677M +9F +9P 99R 12/25
PTA +1.91T +1.51UDC +1.23FLC 97R
GTPI +2638G

MDF Goldwyn Breezier 39-ET

65666410 Excellent-94 EEVEE 3E
6-09 2x 365x 39420 4.4 1754 3.0 1192
5-08 2x 338d 33160 4.5 1487 3.0 1006
4-02 2x 305d 37680 3.9 1484 3.0 1123
Life: 2780d 227620 4.4 9999 3.1 7064
• Grand Champion Virginia Summer Show 2013

Maternal sister:

- Rainyridge Talent Barbara** RC EX-95 14*
3-04 2x 365d 34465 3.6 1257 3.3 1133
• All-American & All-Canadian 5 Yr Old 2010

2nd through 5th Dams:

- RF Outside Breeze-ET** EX-95 2E 2*
5-03 2x 365d 37607 4.3 1623 3.3 1237
Life: 1896d 165379 4.6 7560 3.6 5973
• Grand Champion Southern Spring/Nat 2011
• 1st 125,000 lb Cow Southern Spring/Nat 2011
- Rayverley Briana Milan-ET** EX-2E-CAN 6*
6-03 2x 365d 27075 3.4 928 3.2 862
- Rainyridge Tony Beauty** EX-5E-CAN 9*
10-5 2x 365d 29081 3.5 1005 3.1 913
Life: 8 lact 199869 3.3 6592 3.2 6455
• All-Canadian Mature Cow '92, '93, '95 & '99
• All-American Aged Cow '92, '95 & '99
• Canadian Cow of the Year 1999
• Grand Champion International Show 1999
• Supreme Champion WDE 1995 & 1999
• Res. Grand Champion RAWF 1995 & 1999
• Grand Champion Royal Winter Fair 1993
• HM All-Canadian 4 Year Old 1989
- Despics Tempo Diane** VG-85-3Y-CAN
Life: 7 Lact 109278 3.7 4032

3

JUSTIN & KOTTI HINTZ
E4898 COUNTY HIGHWAY OO
OGDENSBURG, WI 54962
715-851-0049

MARCH CALF

Born: March, 2026
Spring Calf

Full sister to:

Townlineacre DL Lombardi-ET
250HO16490
GTPI +2710G +2.19T 12/25



TOWNLINEACRE KING DOC LENA EX-94

Farnear Delta-Lambda-ET

3125993715 GM 12/20 TR TP TE TC A1/A2
PTA +735M +13F +21P 99R 12/25
PTA +2.20T +1.87UDC +1.15FLC 99R
GTPI +2882G

Townlineacre King Doc Lena

3214266550 Excellent-94 EEEEE @ 4-08 TR TC TL TD
GTPI +2466G +2.82T +1.73UDC +1.45FLC
2-10 3x 365d 29660 4.4 1319 3.0 883
1-10 3x 308d 23380 3.9 901 2.9 683



GLORYLAND-I GOLDWYN LOCKET EX-94 2E

2nd thru 11th Dams

Golden-Oaks Lockn Load-ET VG-85 VG-MS
2-10 3x 273d 20410 4.0 820 2.9 593
Gloryland-I Goldwyn Locket-ET EX-94 2E 9*
4-11 3x 365d 37310 5.0 1855 3.6 1334
Life: 1485d 137901 4.6 6400 3.6 4981
• *Nom All-Canadian Milking Yearling 2011*
Gloryland Lakota Rae-ET VG-88 EX-MS DOM 2*
2-03 2x 365d 22850 3.8 857 3.5 794
Gloryland Lana Rae EX-94 EEEEE 2E DOM 1*
5-06 2x 365d 29011 4.0 1159 3.4 993
Life: 2113d 129620 3.7 4768 3.5 4587
Scientific Liza Rae-ET EX-90 EEEEE
4-09 2x 365d 26710 2.9 786 3.3 878
C Hanoverhill Tony Rae EX-96 3E GMD DOM 5*
6-11 2x 365d 40220 4.1 1661 3.3 1331
Life: 2247d 166396 4.1 6904 3.4 5612
C Hanoverhill TT Roxette-ET EX-94 2E GMD
10-0 3x 365d 35040 4.3 1519 3.0 1063
Life: 2104d 164789 4.1 6760 3.1 3587
Mil-R-Mor Roxette EX-CAN 30*
7-01 2x 365d 24531 4.7 1153
Life: 6 Lacs 121418 4.7 5728
C Glenridge Citation Roxy EX-97 4E GMD 6*
Life: 3620d 209784 4.5 9471
C Norton Court Model Vee EX-90 6*
Life: 4183d 218629 3.9 8581

4

HOGGE, DYMENTHOLM & WADELAND SO DAIRY
JUSTIN HOGGE
5659 W 1400 N
OGDEN, UT 84404
801-731-5767

YELLOWSTONE ANOTHER ONE-ET

3309747672 TR TP TC TV TL TD
Born: September 10, 2025
GTPI +2352G +2.77T +1.71UDC +2.06FLC 12/25



LUCK-E AVALANCHE ATHENA EX-93

D2 Summerfest Caughtup-ET

CAN 14131673 EX-91 TM TC TY TL TD
PTA -173M -19F -4P 84R 12/25
PTA +2.52T +1.53UDC +1.70FLC 82R
GTPI +2406G

West-Adub Jagger Adeline-ET

243273617 Excellent-90 EEEEE @ 3-03
2-02 3x 292d 22870 4.3 977 3.9 894
• *Int & HM Grand Champion WI District 7 2025*



LUCK-E ADVENT ASIA-ET EX-94 3E

2nd thru 10th Dams

Luck-E Avalanche Athena EX-93 EEEEE
2-10 2x 305d 19110 4.0 758 3.3 627
Luck-E Contender Athena RC EX-92 2E
6-04 2x 343d 27440 5.1 1400 3.2 876
Life: 1493d 100960 5.0 5049 3.3 3337
Luck-E Advent Asia-ET EX-94 3E RC TL TD
6-02 2x 365d 40150 4.9 1984 3.3 1337
Life: 1282d 113730 5.1 5814 3.4 3860
• *Holstein International Impact Cow 2016 & 2019*
Luck-E Blitz Australia-ET VG-87 GMD DOM
2-02 2x 365d 37990 4.0 1528 3.0 1132
Luck-E Skychief Arizona-ET EX-90 EX-MS GMD DOM
5-01 2x 365d 56280 5.1 2872 3.3 1855
Life: 1301d 125490 5.2 6512 3.4 4226
Hari-Lyn Starbuck Ashley EX-94 2E GMD DOM
6-06 2x 365d 35720 4.2 1504 3.4 1200
Life: 1753d 124040 4.0 4994 3.2 4002
• *Grand Champion IL State Show 1999*
Kachina Valiant Act-ET VG-86 VG-MS
7-05 2x 365d 23450 4.4 1041 3.1 719
Life: 2103d 110050 4.6 5037 3.4 3742
Dodeb Matt Actress EX-93 EEEE 3E
Life: 2348d 141870 4.3 6058
Lamkinland B Matt Actress VG-85 VG-MS
5-04 3x 305d 20780 3.9 820
• *Res Gr Champion Illinois State Show*

5

DAWSON & KYLE NICKELS AND BENJAMIN BUSKE
W7478 PROVIMI RD
WATERTOWN, WI 53098
920-253-1521

DBJ&H CINNAMON TWIST-RED-ET

3283517020
Born: June 1, 2025
GTPI +2254G 12/25
Summer Yearling



BRACKLEY FARM CHELIOS CHEERIO EX-96 2E

Hodglynn Maximum-Red-ET

CAN 14156509 TL TV TY
PTA -637M -35F -32P 82R 12/25
PTA +1.65T +1.15UDC +1.16FLC 81R
GTPI +2118G

Brackleyfarm Chelios Cheerio

CAN 10848075 Excellent-96 EEEEE 2E TL TD
5-10 2x 365d 40070 4.8 1921 3.2 1275
7-00 2x 365d 38650 4.0 1558 3.3 1273
3-09 2x 327d 32360 4.3 1387 3.2 1044
4-10 2x 305d 28160 4.3 1221 3.2 897
Life: 1364d 139390 4.4 6095 3.2 4494

CHEERIO!

- *HHM All-American 5-Yr-Old Cow 2016*
- *Nom All-Canadian 5-Yr-Old Cow 2016*
- *Res Grand Champion Royal Winter Fair 2016*
- *All-American 4-Yr-Old Cow 2015*
- *HM All-Canadian 4-Yr-Old Cow 2015*
- *HM Grand Champion International Show 2015*
- *Nom All-American Sr 3-Yr-Old Cow 2014*
- *HM All-American Fall Milking Yrlg 2012*
- *HM All-Canadian 4-H Sr Calf 2011*

2nd thru 7th Dams

- Brackleyfarm Goldwyn Corine** VG-88 VVVV-CAN
6-00 2x 319d 25188 4.9 1228 3.6 908
Life: 2143d 135061 4.7 6335 3.5 4678
- Brackleyfarm Co Star** VG-88 VVVV-CAN
5-05 2x 365d 26155 4.4 1153 3.5 904
Life: 4 Lact 109209 4.2 4634 3.6 3931
- Brackleyfarm Marks Stripper** GP-82-CAN
3-05 2x 365d 20765 4.8 990 3.7 772
- Brackleyfarm Aero Stripe** VG-85 VG-MS-CAN
3-07 2x 365d 28380 4.5 1279 3.5 994
- Diamond Hill Lancer Star** VG-88 VG-MS *2 STAR
5-03 2x 365d 23893 4.0 1012 3.0 758
Life: 8 Lact 165246 4.0 6656 3.1 5176
- Holmesland Star Lancer-Red** VG-85 VG-MS-CAN
7-02 2x 305d 21182 4.1 860 3.2 688
Life: 7 Lact 107265 4.1 4387 3.2 3466

6

M, A & E WIESE AND K BRANTMEIER
N426 MILITARY RD
SHERWOOD, WI 54169
920-989-1167

MILKSOURCE KING D CLAIRE-ET

3281425887
Born: September 12, 2025
Fall Calf



BRACKLEY FARM CHELIOS CHEERIO EX-96 2E

Woodcrest King Doc

3132417775 Excellent-90 GM 12/21 TR TP TC TY TV
PTA +993M +27F +29P 99R 12/25
PTA +2.38T +1.13UDC +1.64FLC 99R
GTPI +2828G

Brackleyfarm Chelios Cheerio

CAN 10848075 Excellent-96 EEEEE 2E TL TD
5-10 2x 365d 40070 4.8 1921 3.2 1275
7-00 2x 365d 38650 4.0 1558 3.3 1273
3-09 2x 327d 32360 4.3 1387 3.2 1044
4-10 2x 305d 28160 4.3 1221 3.2 897
Life: 1364d 139390 4.4 6095 3.2 4494

CHEERIO!

- *HHM All-American 5-Yr-Old Cow 2016*
- *Nom All-Canadian 5-Yr-Old Cow 2016*
- *Res Grand Champion Royal Winter Fair 2016*
- *All-American 4-Yr-Old Cow 2015*
- *HM All-Canadian 4-Yr-Old Cow 2015*
- *HM Grand Champion International Show 2015*
- *Nom All-American Sr 3-Yr-Old Cow 2014*
- *HM All-American Fall Milking Yrlg 2012*
- *HM All-Canadian 4-H Sr Calf 2011*

2nd thru 7th Dams

- Brackleyfarm Goldwyn Corine** VG-88 VVVV-CAN
6-00 2x 319d 25188 4.9 1228 3.6 908
Life: 2143d 135061 4.7 6335 3.5 4678
- Brackleyfarm Co Star** VG-88 VVVV-CAN
5-05 2x 365d 26155 4.4 1153 3.5 904
Life: 4 Lact 109209 4.2 4634 3.6 3931
- Brackleyfarm Marks Stripper** GP-82-CAN
3-05 2x 365d 20765 4.8 990 3.7 772
- Brackleyfarm Aero Stripe** VG-85 VG-MS-CAN
3-07 2x 365d 28380 4.5 1279 3.5 994
- Diamond Hill Lancer Star** VG-88 VG-MS *2 STAR
5-03 2x 365d 23893 4.0 1012 3.0 758
Life: 8 Lact 165246 4.0 6656 3.1 5176
- Holmesland Star Lancer-Red** VG-85 VG-MS-CAN
7-02 2x 305d 21182 4.1 860 3.2 688
Life: 7 Lact 107265 4.1 4387 3.2 3466

7

ERYL DONE
C/O TRENT STYZCINSKI - 715-304-7773
BOX 210
GEORGETOWN, ON

MS TENTASTIC FASTEST-TW

3297824998 TR TP TC TV TL TD
Born: May 7, 2025
GTPI +2560G +596M +1.80T +1.05UDC A1/A2



OAKFIELD SOLOM FOOTLOOSE-ET EX-97 2E

Sandy-Valley Tentastic-ET

3250768379 TR TP TM TE TC TY TL TD
PTA +993M +59F +48P 82R 12/25
PTA +1.64T +1.23UDC +.66FLC 81R
GTPI +3111G

Oakfield Tat Flashdance-ET

3244675174 Excellent-90 @ 3-03 TC TY TV TL TD
GTPI +1962G PTA +2.51 +1.63UDC
2-02 2x 248d 18250 4.2 759 3.4 617

Full sister:

Miss Tatoo Fern-ET VG-89 EX-MS

• All-American & All-Canadian Milking Yrlg 2024

2nd thru 5th Dams

Oakfield Solom Footloose-ET EX-97 EEEEE 2E

3-00 2x 309d 32280 4.0 1402 3.2 1044
• All-American Lifetime Production Cow 2024
• Grand Champion International Show 2024
• Res All-American Aged Cow 2023
• All-American 5-Year-Old 2022
• Unanimous All-American 4-Year-Old 2021
• All-American Junior 3-Year-Old 2020
• Nominated All-American Junior 2-Year-Old 2019

Duckett-SA Braxtn Frisco-ET EX-94 EEEEE

5-01 3x 365d 32740 3.3 1096 2.9 964

• 1st Senior 2-Year-Old NY State Fair 2014

Harvue Roy Frosty EX-97 EEEEE 3E GMD

5-07 2x 365d 44710 5.0 2222 3.0 1332

Life: 2285d 217250 4.8 10507 3.2 6856

• Supreme Champion World Dairy Expo 2009, 2010

• All-American Aged Cow 2010

• Unanimous All-American 5-Year-Old 2009

• Unanimous All-Canadian 5-Year-Old 2009

Harvue Sam Heidi EX-93 EEEEE 3E DOM

5-07 2x 365d 34700 4.6 1586 3.2 1115

Life: 2480d 183870 4.5 8335 3.4 6312

Next four dams VG

8

C & C COFFEEN, B, K, K & G POLLACK
861 S OVERLAND RD
DE PERE, WI 54115
920-360-1389

A-L-H HULU FAN GIRL-ET

3297824944 TR TP TC TL TD
Born: March 1, 2025
GTPI +2549G +2.25T +1.93UDC +1.81FLC A2/A2
Spring Yearling



OAKFIELD SOLOM FOOTLOOSE-ET EX-97 2E

Siemers Wolf Hulu 37006-ET

3245702863 RC TP TE TC TY TV TL TD
PTA +555M +19F +27P 82R 12/25
PTA +2.77T +2.01UDC +1.75FLC 81R
GTPI +2961G

Miss Goldwyn Fiona-ET

3268843002 Good Plus-83 @ 2-10
2-02 2x 365d 26370 4.0 1058 4.0 1058

Maternal sister:

Miss Tatoo Fern-ET VG-89 EX-MS

• All-American & All-Canadian Milking Yrlg. 2024

2nd thru 5th Dams

Oakfield Solom Footloose-ET EX-97 EEEEE 2E

3-00 2x 309d 32280 4.0 1402 3.2 1044

• All-American Lifetime Production Cow 2024

• Grand Champion International Show 2024

• Res All-American Aged Cow 2023

• All-American 5-Year-Old 2022

• Unanimous All-American 4-Year-Old 2021

• All-American Junior 3-Year-Old 2020

• Nominated All-American Junior 2-Year-Old 2019

Duckett-SA Braxtn Frisco-ET EX-94 EEEEE

5-01 3x 365d 32740 3.3 1096 2.9 964

• 1st Senior 2-Year-Old NY State Fair 2014

Harvue Roy Frosty EX-97 EEEEE 3E GMD

5-07 2x 365d 44710 5.0 2222 3.0 1332

Life: 2285d 217250 4.8 10507 3.2 6856

• Supreme Champion World Dairy Expo 2009, 2010

• All-American Aged Cow 2010

• Unanimous All-American 5-Year-Old 2009

• Unanimous All-Canadian 5-Year-Old 2009

Harvue Sam Heidi EX-93 EEEEE 3E DOM

5-07 2x 365d 34700 4.6 1586 3.2 1115

Life: 2480d 183870 4.5 8335 3.4 6312

Next four dams VG

9

DANIEL WEIDNER
5550 MONROE AVENUE
PLOVER, WI 54467
920-728-5555

MEAD-MANOR U ANNEBEL-RED-ET

3306298073
Born: June 7, 2025
GTPI +1821G +1.62T +1.24FLC
Summer Yearling



MEAD-MANOR DEF ADELINE-RED EX-94 2E

Riverdown Unstopabull-Red

CAN 11801450 TY TV TL
PTA -817M -58F -44P 99R 12/25
PTA +1.32T +1.12UDC +.99FLC 99R
GTPI +2012G

Mead-Manor Def Adeline-Red

143785527 Excellent-94 EEEVE 2E
6-00 3x 365d 34980 4.0 1404 3.0 1065
4-02 3x 305d 31520 4.0 1264 3.2 1010
Life: 1520d 134490 4.1 5447 3.2 4326
• Res All-American 4-Year-Old 2020
• Unan All-American R&W Junior 3-Year-Old 2019
• Unan Jr All-American R&W Junior 3-Year-Old 2019
• Supreme Champion WDE Junior Show 2019
• All-American R&W Junior 2-Year-Old 2018

2nd thru 6th Dams

Mead-Manor Abs Adele-ET VG-85 @ 3-04 RC
2-03 3x 305d 22550 4.2 939 3.2 728

Full sister:

Mead-Manor Abs Adrian-ET EX-93

• Nom Junior All-American Jr 2-Year-Old Cow

BVK Atwood Abilene-ET EX-93 EEEEE 2E BL

5-10 3x 365d 39510 3.9 1537 3.2 1266

Life: 1265d 112400 3.9 4390 3.4 3795

Ms Kingstead Chief Adeen-ET EX-94 2E DOM 9*

3-05 2x 310d 30180 4.0 1209 3.6 1077

Life: 1382d 100760 4.0 4010 3.6 3649

• Nom All-American Jr 3-Year-Old 2000

• Nom All-American 4-Year-Old 2001

• Member All-American Produce '00 & '01

C Aitkenbrae Starbuck Ada EX-94 2E DOM 4*

13-8 2x 365d 25150 3.0 764 3.4 843

Life: 6 Lact 137732 3.4 4749 3.4 4647

• All-American Produce of Dam 2000, 2001

• All-American 3-Year-Old 1990

10

SHAWN & SETH NEHLS, D KAMPHUIS AND B FLIER
N3365 LEVEL VALLEY RD
HUSTISFORD, WI 53034
920-872-0244

ELECTRAS AVENGER ENDLESS-ET

3309802945
Born: December 1, 2025
Winter Calf



NEHLS-VALLEY ELECTRA-ET EX-90

Mystique Avenger-ET

CAN 120213097 TL TV TY
PTA +73M +10F -8P 93R 12/25
PTA +1.45T +1.86UDC +.25FLC 85R
GTPI +2541G

Nehls-Valley Electra-ET

3231685206 Excellent-90 EX-MS @ 3-08 TR TC TL TD
GTPI +2248G +2.21T +1.03UDC +1.54FLC
2-11 2x 365d 29750 4.0 1188 3.3 971
• Res Junior All-American Fall Calf 2022
• 4th Fall Calf Midwest Spring National 2022
• 8th Milking Yearling International Show 2023
Sire: Doorman

2nd through 11th Dams

Floydholm Eye Of The Storm EX-93 2E

5-11 2x 365d 32900 3.8 1257 3.2 1057

Life: 1626d 137190 3.9 5344 3.3 4537

Floydholm Mc Emoji-ET EX-95 EEEEE GMD

2-00 2x 365d 30,960 3.8 1188 3.3 1024

• All-American & All-Canadian Jr 3 Yr Old 2019

Budjon-JK Damion Eclipse-ET EX-94 2E

• Nom. Jr. All-American Sr. 3 Year Old 2016

• Nom. Jr. All-American Sr. 2 Year Old 2015

Rolling-Spring G Escence-ET EX-95 2E

• Nom. All-American 4 Year Old 2010

Budjon-JK Dur Esquisite-ET EX-92 GMD DOM

• Nom. All-American Sr. 2 Year Old 2006

Budjon-JK Encore Electra-ET 2E-95 GMD DOM

• Res. All-American Sr. 3 Year Old 2001

Krull Broker Elegance EX-96 3E GMD DOM

• HM All-American Aged Cow 1999 & 2000

• HM All-Canadian Mature Cow 1999

Krull Starbuck Excellency EX-90 EEEEV GMD DOM

3-03 2x 365d 27140 3.5 937 3.4 930

Life: 1733d 109780 3.7 4077 3.3 3605

Krull TT Excellency EX-90 VEEE DOM

Life: 1733d 109780 3.7 4077 3.3 3605

Krull Boot Mark Excellency EX-92 2E GMD

6-06 2x 365d 27410 3.8 1040 3.1 868

Life: 3026d 201440 3.5 7105 3.0 4634

Krull Kingstead Excellency EX-92 4E GMD

Life: 3364d 179790 3.6 6436

11

C, K & G GRINSTEAD AND G, J & B BOYKE
N5421 COUNTY RD K
FOND DU LAC, WI 54937
920-960-4564

VIR-CLAR GOODY 2 SHOES-ET

3318775692 RC
Born: December 3, 2025
Winter Calf



SIEMERS AWESOME GREAT-RED EX-93 2E

Farnear Aircraft-ET

3214251588 RC TE TC TY TD
PTA -269M -12F -14P 90R 12/25
PTA +3.26T +2.25UDC +1.76FLC 84R
GTPI +2416G

Siemers Awesome Great-Red

3132662762 Excellent-93 EEEEE 2E
3-02 2x 365d 38480 2.5 961 2.8 1082
5-03 2x 365d 37630 2.5 955 2.9 1093
2-01 3x 338d 31780 3.0 949 3.0 947
Life: 1344d 125660 2.8 3461 2.9 3703
• Unan All-American R&W Senior 2-Year-Old 2018
• 1st Senior 2-Year-Old International R&W 2018

2nd thru 8th Dams

Siemers Defint Great-Red-ET EX-92 EEEEE
3-01 3x 362d 41770 3.3 1360 3.2 1346
• All-American R&W Winter Yearling 2015
• Unan All-American R&W Winter Calf 2014
• Res All-American Winter Calf 2014
• Junior Champion International R&W Show 2014
Benrise Royce Gretchen-Red EX-93 EEEEE
2-01 2x 291d 18864 3.7 694 3.3 614
• 4th 4-Yr-Old Midwest Sprg/Nat 2013
Deslacs September Grea VG-85-CAN
4-09 2x 365d 26301 4.1 1085 3.1 818
Lesperron Red Man Great-Red EX-92 3E 11*
9-01 2x 365d 31175 4.0 1243 3.3 1036
• 1st Junior 3-Year-Old Royal Winter R&W 2008
• 2nd 5-Year-Old QC International R&W 2010
• 3rd 5-Year-Old Royal Winter R&W 2010
Granduc Grace Mason EX-CAN 8*
3-11 2x 365d 53283 3.6 1925 3.2 1693
Granduc Jewel Astre VG-85-CAN 13*
4-00 2x 365d 46230 4.0 1850 3.3 1510
Cloverlands Skylar Cherry-Red VG-87-CAN 12*
4-09 2x 365d 51634 3.9 2000

12

ANDREW & LYNETTE BUTTLES
5027 HIGHWAY 81
LANCASTER, WI 53813
608-723-4712

STONE-FRONT HULU ATHENA

3295558294 RC
Born: September 1, 2025
Fall Calf



KHW GOLDWYN AIKO-ET EX-91 2E RC DOM

Siemers Wolf Hulu 37006-ET

3245702863 RC TP TE TC TY TV TL TD
PTA +555M +19F +27P 82R 12/25
PTA +2.77T +2.01UDC +1.75FLC 81R
GTPI +2961G

Stone-Front Slect Aries-Red

3222922842 Excellent-91 EEVVE @ 4-06 TC TL TD
3-03 3x 297d 29122 5.7 1649 3.2 938
2-04 3x 300d 19665 4.4 1311 3.0 900
4-03 2x 167d 26964 5.2 1413 3.2 858

Sire: Journey

2nd thru 10th Dams

Stone-Front Adsn Aritsta-Red VG-86 VVVVV
2-10 2x 296d 28686 5.2 1504 3.3 942
KHW Sp Effect Aqua-Red-ET EX-92 EEEEE 2E
7-05 2x 337d 30198 4.0 1478 3.3 1008
Life: 1959d 149410 5/1 7608 3.3 4948
KHW Goldwyn Aiko-ET EX-91 EEEVE 2E DOM RC
5-07 2x 365d 29150 5.1 1500 4.0 1159
Life: 2055d 137990 5.3 7261 4.1 5651
Kamps-Hollow Altitude-ET EX-95 2E DOM RC
7-00 2x 365d 39690 4.7 1849 3.5 1385
Life: 1844d 144460 4.4 6295 3.7 5288
Clover-Mist Alisha-ET EX-93 3E DOM
8-07 2x 365d 36920 4.2 1553 3.4 1258
Life: 2999d 226470 4.7 10659 3.6 8149
Clover-Mist Augy Star-ET EX-94 4E DOM
7-10 2x 365d 43140 5.0 2136 3.3 1421
Life: 2486d 206250 4.7 9793 3.5 7187
D-R-A August EX-96 4E DOM
8-05 3x 365d 27460 4.3 1187 3.2 871
Life: 3443d 190200 4.4 8281 3.5 4818
• Nominated All-American Aged Cow 1986
D-R-A Ideal Precious Leader EX-90 2E
Life: 2456d 133250 4.0 5308
D-R-A Princess Lad Leader EX-90 3E

13

ROYAL VISTA HOLSTEINS
1289 COUNTY ROAD M
PICKETT, WI 54964
920-420-4722

ROYAL-VISTA BEATRICE-RED-ET

329785021 TC TV TL TD A1/A1

Born: June 3, 2025

GTPI +2176G +2.70T +1.90UDC +1.77FLC

Summer Yearling

Maternal sister:

Royal-Vista Brie-Red-ET

• Nom All-American R&W Spring Calf 2024



VZ-K ALTUDE BING-RED-ET EX-93

Farnear Architect-ET

3214251590 RC TE TC TY TV TL A1/A2

PTA -178M -33F -8P 95R 12/25

PTA +3.02T +2.27UDC +1.59FLC 93R

GTPI +2392G

VZ-K Altude Bing-Red-ET

3221913575 Excellent-93 EEEEE @ 4-06

GTPI +2091F +2.94T +2.11UDC +1.58FLC

2-01 2x 365d 28750 3.9 1123 3.0 873

• 5th Sr 2-Yr-Old Midwest Spring R&W Show 2023



MYSTIK-KREEK AVLC BANFF-RED EX-94

2nd thru 11th Dams

Mystik-Kreek Avlc Banff-Red EX-94 EEEEE TC TL

4-11 2x 365d 34690 4.0 1401 3.0 1025

Mystik-Kreek Atw Britney-ET RC

Cherrie-Kreek Bonnie-Red-ET EX-94 EEEEE 2E

6-01 2x 365d 42820 4.3 1827 3.1 3472

• Res All-American R&W Aged Cow 2010

Pinehurst-FL Britney-ET EX-90 EX-MS

4-09 2x 365d 29000 4.0 1155 3.4 982

Pinehurst Burgandy-Red-ET EX-90 EX-MS

4-11 2x 365d 30116 4.2 1258 3.4 1019

Pinehurst Beaujolais-Red EX-94 EEEEE 3E

7-06 3x 365d 50730 3.5 1780 2.8 1421

Life: 2180d 221410 3.3 7296 3.0 6627

• All-American R&W 1991 and 1994

• Six time R&W All-American Nominee

Pinehurst Fascination-ET EX-90 RC

3-09 3x 365d 34390 3.3 1145 2.8 970

Pinehurst Pleasure EX-93 4E GMD

Life: 6 Lact 203770 3.6 7210

• 1st Jr 2 Yr Old Eastern National 1981

Pinehurst Precious EX-95 4E GMD

Life: 10 Lact 266416 3.4 9080

• All-American 5 Yr Old Cow 1982

• Res All-American 1979 & 1980

Jan-Com Fond Matt Matilda EX-97 5E GMD

Life: 9 Lact 243580 3.6 8775

• Jr All-American Aged Cow 1977

14

JAMES & AUSTEN SCHMIDT
N2292 W COUNTY ROAD A
CASCADE, WI 53011
262-626-4423

ELMLO IMAGE TOOTSIE-ET

Born: March 2, 2026

Spring Calf



PENNCROSS THEORABLE-ET EX-91

Haveitall Sidekick Image-ET

3277629447 TC TD TE TL TM TP TR TV TY A2/A2

PTA +439M +6F +19P 83R 12/25

PTA +2.94T +1.92UDC +1.16FLC 82R

GTPI +2667G

Elmlo Gold Chip Tophat

3230932355 Excellent-91 EEVEE @ 4-03

2-10 2x 305d 26460 3.7 992 3.1 825

1-11 2x 291d 21710 3.7 797 3.0 649



ERNEST-ANTHONY MS THEORY-ET EX-95

2nd thru 7th Dams

Elmlo Doorman Topgear-ET EX-91 EEVVE

3-01 2x 305d 23240 3.8 885 3.4 800

Penncross Theorable-ET EX-91 EEEVE

3-04 2x 272d 20000 3.9 775 3.3 658

• 3rd Sr 3-Ye-Old Midwest Spring/Nat 2017

Ernest-Anthony Ms Theory-ET EX-95 EEEEE

3-05 2x 321d 33060 3.3 1094 3.2 1068

• Member HM All-American Produce of Dam 2016

• Member Nom All-American Best 3 Females 2016

• 2nd 4-Year-Old, Eastern Fall National 2016

• 2nd Senior 3-Year-Old, MD State Fair 2015

• 2nd Senior 2-Year-Old, Eastern Fall Nat'l 2014

Ernest-Anthony Thriller-ET EX-95 EEEEE 2E

2-11 2x 365d 37310 4.7 1766 3.3 1241

• HM All-American Produce of Dam 2016

• Grand Champion Northeast Fall National 2010

• Res Int Champion NY Spring Show 2010

Ernest-Anthony Tyra-ET EX-94 EEEEE GMD

5-08 2x 365d 42179 4.5 1931 3.3 1432

• Res All-Canadian Senior 3-Year-Old 2002

• 1st Bill Graham WDE Sweepstakes 2002

• Maryland Futurity Champion 2002

C Alanvale Inspiration Tina EX-95 2E GMD DOM

6-00 2x 365d 36010 5.1 1829 3.3 1184

• Res All-American Aged Cow 1995-1996

• Res Grand Champion International Show 1995

• All-Canadian Junior 3-Year-Old 1993

• Supreme Champion Eastern National 1993

• HM All-American Junior 2-Year-Old 1991

15

WAYNE & SAMANTHA GIESE
115021 HUCKLEBERRY RD
EDGAR, WI 54426
715-965-7147

SAMWAY DL SAMARA-ET

3313217197 RC
Born: March 23, 2025
Spring Yearling



BLONDIN ARMANI STELLA ARTO-RED EX-94

Farnear Delta-Lambda-ET

3125993715 GM 12/20 TR TP TE TC A1/A2
PTA +735M +13F +21P 99R 12/25
PTA +2.20T +1.87UDC +1.15FLC 99R
GTPI +2882G

Blondin Armani Stella Arto-Red

CAN 109045957 Excellent-94 EEVVE 2E TL TD
2-04 2x 325d 23730 3.9 930 3.4 801



BLONDIN DESTRY SALLY-RED-ET EX-93-CAN

2nd thru 8th Dams

Blondin Destry Sally-Red-ET EX-93-CAN
5-05 2x 365d 41014 3.2 1321 2.9 1203
Life: 1607d 139875 3.7 5136 3.1 4360

Grand Champion Royal R&W Show 2014
Grand Champion Quebec Spring R&W 2015

Blondin Talent Salena EX-93-2E-CAN 4*
5-11 2x 365d 31991 3.8 1206 3.2 1010
Life: 4 Lact 105430 3.8 4050 3.2 3377

Blondin R Marker Supra VG-89-CAN 12*
3-06 2x 364d 30256 4.2 1281 3.2 959
Grand Champion Lachute 2003

Blondin Skychief Supra EX-93-3E-CAN 35*
9-04 2x 365d 42758 4.1 1733 3.1 1305
Life: 6 Lact 263796 3.9 10207 3.4 8955

Grand Champion Berthier 2001
Grand Champion Papneau 2000

Blondin Starbuck Superlass VG-87-CAN 17*
11-9 2x 365d 36180 4.1 1479 3.1 1131
Life: 8 Lact 250186 3.8 9486 3.2 7941
1st Jr Calf Berthier 1989

Diamond Hill Lass VG-87-CAN
4-00 2x 309d 23834 4.0 952 3.3 787
Life: 5 Lact 108883 3.8 4284 3.2 3514
Diamond Hill Tempo Misty VG-85-CAN 2*

16

CALEB & JOSIAH OLSON
6575 TOWER DRIVE RD
LENA, WI 54139
920-676-2516

EXCELERANT SHOW WAY-RED-ET

3257589327
Born: September 20, 2025
Fall Calf



Schluter Shelby Lee-Red-ET EX-94 2E

Farnear Altitude-Red-ET

3128013348 TE TC TY TV TL TD
PTA -417M -24F -10P 99R 12/25
PTA +2.30T +1.60UDC +1.27FLC 99R
GTPI +2231G

Schluter Shelby Lee-Red-ET

3134166816 Excellent-94 EEEEE 2E
3-06 2x 365d 25890 3.7 963 3.2 816
2-02 3x 305d 23620 3.9 917 2.9 695
5-02 2x 215d 23270 3.4 797 2.7 632

- HM All-American R&W 5-Year-Old 2021
- Nom All-American R&W Senior 3-Year-Old 2019
- Res All-American R&W Senior 2-Year-Old 2018
- HM Grand Champion Midwest Spring R&W 2018
- Res Grand Champion Illinois State Show 2018

Sire: Awesome

2nd thru 9th Dams

Helmcrest Destry Sarha Lee-Red EX-90 EVVEE
4-03 3x 305d 30460 4.3 1307 3.1 954

- Nom JR All-American Fall Calf 2011
- Res Jr All-Illinois Fall Calf 2011

Stonedon Red Devil Alana VG-85-CAN
3-09 2x 329d 19412 3.9 758 3.4 650

Stelbro Rebecca Ayre VG-86 VG-MS-CAN
5-01 2x 365d 29558 3.4 1012 3.1 908

Stelbro Elegant Rebecca VG-86 VG-MS 22*
4-01 2x 365d 31149 3.5 1091 3.1 950

- All-American Junior 2-Year-Old 2001

Stelbro Renita Ranger-Red EX-94 EEEEE 3E 8*
7-04 2x 365d 29760 3.9 1168 3.1 924

4-02 2x 365d 29259 4.1 1030 3.2 811

- All-American R&W Aged Cow 2001
- All-American R&W 4-Year-Old 1998
- All-American R&W Senior 2-Year-Old 1996
- Grand Champion International R&W 1998, 2001

Stelbro Enhancer Ripple-Red EX-CAN-4E 9*
9-05 2x 365d 31552 4.5 1413 3.2 1008

Life: 6 Lact 202164 4.5 9112 3.4 6867

Stelbro Regal Rene EX-3E-CAN 3*

Life: 7 Lact 134725 3.9 5190 3.4 4619

Stelbro Astra Starbrite VG-85 VG-MS-CAN
2-03 2x 365d 20401 3.6 741

17

JEFF BRANTMEIER
W3826 CROSSTOWN RD
HILBERT, WI 54129
920-989-1167

HILROSE UNSTOPABUL PARIS-ET

3281425897 RC
Born: September 3, 2025
Fall Calf



HILROSE BALTIMOR PENNY-ET EX-93

Riverdown Unstopabull-Red

CAN 11801450 TY TV TL
PTA -817M -58F -44P 99R 12/25
PTA +1.32T +1.12UDC +.99FLC 99R
GTPI +2012G

Hilrose Dempsey Patty-ET

71480220 Excellent-93 EEEEE 2E GMD TR CD TL TD
GTPI +1976G +1.08T
6-00 2x 365d 45660 3.7 1703 310 1356
4-06 2x 365d 40750 3.5 1434 3.0 1219
7-05 2x 347d 40030 4.4 1766 2.9 1172
3-04 2x 365d 38460 3.3 1257 3.0 1147
2-03 2x 365d 37320 3.4 1276 3.0 1132
Life: 1968d 216610 3.7 8074 3.0 6539

2nd thru 8th Dams

Hilrose Baltimor Penny-ET EX-93 EEEEE
4-05 2x 365d 42790 3.6 1552 2.9 1244
Life: 1248d 129200 3.8 4849 3.0 3840

• 2nd Fall Yearling Midwest Sprg/Nat 2012
Hilrose Rubens Patsy EX-93 EEEEE 3E GMD
4-09 2x 365d 45970 3.8 1761 3.1 1432
Life: 1873d 188950 3.8 7269 3.2 5999
• Reserve All-American Fall Yearling 2005
• 2nd Fall Yearling International Show 2005

Hilrose Lee Princess EX-93 4E GMD DOM
3-06 2x 365d 50010 4.1 2038 3.2 1607
Life: 3233d 349220 3.9 13787 3.0 10400

• Nom Jr All-American Jr 3-Year-Old Cow 2004

Hilrose Progres Peerless-TW VG-85 GMD
3-05 2x 352d 49310 3.7 1848 3.0 1492
Life: 1590d 159510 3.9 6219 3.3 5200

Hilrose Mandel Paris VG-88 VEVVV GMD
3-06 2x 365d 33870 3.9 1310 3.2 1089

Hilrose Blkstar Paula VG-88 EX-MS
6-07 2x 365d 36670 4.2 1548 2.9 1072
Life: 1840d 157070 4.3 6708 3.0 4755

Hilrose Beautician Pauline VG-87 VG-MS
5-07 2x 365d 29740 4.5 1341 3.0 906

18

SHAWN & SETH NEHLS
N3365 LEVEL VALLEY RD
HUSTISFORD, WI 53034
920-349-8354

NEHLS-VALLEY M FRENCH TOAST

3317870102
Born: September 2, 2005
Fall Calf



NEHLS-VALLEY HANCOCK FIDGIT EX-92

Tappenvale Moment-ET

CAN 13087364 A2/A2
PTA -983M -53F -21P 94R 12/25
PTA +3.02T +1.73UDC +1.17FLC 93R
GTPI +2100G

Nehls-Valley French Kiss

325051114 Excellent-90 VEVVE @ 3-06
GTPI +2576F +3.14T +2.44UDC
2-00 2x 365d 28850 4.5 1312 3.7 1061

2nd thru 10th Dams

Nehls-Valley Hancock Fidgit EX-92 EEEEE
4-02 2x 365d 36350 4.8 1754 3.3 1205

• 3rd Summer Jr 2-Yr-Old Midwest Fall/Nat 2022

Nehls-Valley Atwood Fussy VG-86 VG-MS
3-04 3x 305d 26260 4.2 1102 3.2 840

Nehls-Valley Sanchez Flame VG-86 VG-MS
4-04 2x 365d 34040 3.5 1187 3.0 1015
Life: 1145d 104010 3.6 3701 3.0 3106

Carn-Quest Shottle Fame VG-85 VG-MS
4-00 2x 300d 23410 3.5 817 3.3 766

Markwell Durham Frill-ET EX-93 2E
7-02 2x 365d 40513 3.6 1463 3.5 1423
Life: 2247d 158020 4.1 6514 3.8 6023

Markwell Jed Regal-ET EX-92 EEEEE 4E
4-00 2x 365d 28900 4.8 1376 3.8 1086

• 2nd Sr 2-Yr-Old, Western Fall Nat'l 1997

Markwell Bstar E Raven-ET EX-95 3E GMD DOM
4-09 2x 365d 37610 4.3 1580 3.4 1255
Life: 2387d 160020 4.1 6623 3.6 5763

Markwell Mark Elite EX-92 4E GMD DOM
7-00 2x 365d 36230 3.9 1426 3.2 1165
Life: 3736d 211430 3.8 8108 3.6 7533

Rockalli Mars Emily EX-94 EEEEE 4E GMD DOM
3-10 2x 365d 28270 3.7 1050 3.5 988
Life: 3113d 182970 3.8 7016 3.5 6330



MARKWELL DURHAM FRILL-ET EX-93 2E

19

WILLIAM SCHULTZ III
W5677 COUNTY RD N
WALDO, WI 53093
920-980-0455

LYN-VALE CLARABELLA-RED-ET

3299673275
Born: September 3, 2025
Fall Calf



LYN-VALE CHERRYPEPPER-RED VG-89
Winning at Expo!

Farnear Altitude-Red-ET
3128013348 TE TC TY TV TL TD
PTA -417M -24F -10P 99R 12/25
PTA +2.30T +1.60UDC +1.27FLC 99R
GTPI +2231G

Lyn-Vale Levrag Chevron-Red
3144171790 Excellent-93 EEEVE 2E
5-00 2x 365d 32,950 4.8 1580 3.4 1116
3-09 2x 365d 31,200 4.1 1272 3.2 987
2-02 2x 365d 22,630 4.3 978 3.4 775
Life: 1359d 100,150 4.5 4528 3.4 3406
• Res Jr Champion WI Championship R&W 2018
• 2nd Fall Calf WI Championship R&W 2018
• 3rd Fall Yearling WI Championship R&W 2019

2nd thru 6th Dams:

Lyn-Vale Cherrypepper-Red VG-89 EEEVE
3-04 2x 365d 32060 3.9 1241 3.4 1020
• Unanimous All-American R&W Winter Yrlg 2014
Lyn-Vale Ad Chilipepper-Red VG-88 EX-MS
4-05 2x 365d 35660 3.9 1397 2.9 1049
Life: 1505d 131640 3.7 4905 2.9 3864
• Nom. All-American R&W Spring Yrlg 2008
L-Maples Peppermint-Red-ET VG-88 EX-MS
2-00 2x 365d 23120 4.6 1065 3.3 754
• Nom All-American R&W Jr 2 Yr Old 2007
L-Maples RM Pepper-Red EX-94 EEEEE
6-02 2x 305d 25000 4.3 1079 3.2 798
• 5x All-American R&W Nominee
Sunny-Su G Pepper-Red-TW VG-87 VG-MS
4-06 2x 305d 24550 4.1 1001 3.1 763

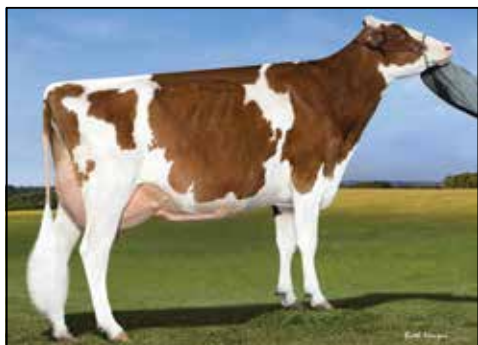
20

ZACHARY OLSON
714 HIGHLAND AVE
KEWASKUM, WI 53040
920-493-0362

OLSON MAGIC INDIGO

3251629421 RC
Born: June 2, 2024
Summer Junior 2-Yr-Old

Due: June 11, 2026 to Blondin Machine
799H000117 Ultrasound Male



MILKSOURCE RN IDELLE-RED-ET EX-92

Oakfield Magic-ET
3245851347 TL TV TY
PTA -56M +18F -6P 82R 12/25
PTA +3.12T +1.84UDC +2.04FLC 81R
GTPI +2712G

Olson-Are Journey Icy-Red
3217581815 Excellent-90 EX-MS @ 4-06 TC TL TD
3-01 3x 313d 26410 4.1 1070 3.0 785
1-10 2x 310d 19710 3.9 768 3.0 593

2nd thru 12th Dams

DJ-Purepride G C Ilyana-ET EX-92 EEEVE
1-11 2x 365d 29650 4.2 1249 3.2 940
DJ-Purepride Icemakr-Red-ET EX-94 EEEEE 2E
5-10 3x 305d 33130 3.6 1200 2.8 932
Milksource RN Idelle-Red-ET EX-92 EEEVE
4-05 3x 305d 36640 3.5 1279 3.0 1083
• Nom All-American R&W Aged Cow 2010
• Nom All-American R&W 5-Yr-Old 2009
Stone-Front Rub Indigo-Red EX-94 EEEEE 2E
6-08 2x 365d 42410 3.7 1568 3.1 1308
Life: 2227d 220650 3.8 8326 3.1 6885
Stone-Front R-Marker Isobel EX-91 EEEEE RC
3-05 2x 365d 29240 3.6 1062 2.8 822
Sherwyn Merrill Inga-ET EX-92 EEEVE 3E
Life: 2207d 172110 3.8 6516 2.8 4795
Sandwater Blstr Ileva-ET VG-85 GMD DOM
3-06 2x 365d 33140 3.2 1070 3.0 994
Life: 2067d 140610 3.6 5114 3.1 4316
Odyssey Chief Mark Ina-ET VG-89 GMD DOM
2-02 2x 357d 32480 4.7 1516 3.4 1103
Heimdal Bova Inka-ET VG-88 VG-MS
2-03 2x 305d 20540 3.2 665
Heimdal Glendell Inka VG-88 GMD DOM
6-11 2x 365d 32350 4.5 1445 3.1 1006
Life: 2039d 161770 4.0 6499 3.1 5005
Vernway Astronaut Inka VG-86 GMD DOM
Life: 8 Lact 190843 3.9 7438



STONE-FRONT RUB INDIGO-RED EX-94

21

MILK SOURCE LLC
C/O EDDIE BUE
N3569 VANDEN BOSCH RD
KAUKAUNA, WI 54130
920-766-5335

MILKSOURCE ARC KAHLUA-ET

3303097975
Born: September 8, 2025
Fall Calf



MILKSOURCE ABSOLUT KLUE EX-93 2E

Farnear Architect-ET

3214251590 RC TE TC TY TV TL A1/A2
PTA -178M -33F -8P 95R 12/25
PTA +3.02T +2.27UDC +1.59FLC 93R
GTPI +2392G

Milksource Absolut Klue

3132912533 Excellent-93 EEEEE 2E RC B/R TR TL TD
3-05 2x 365d 34600 4.3 1497 3.2 1121



MACPES FORTUNE KOQUINE-ET EX-95 2E

2nd thru 8th Dams

Milksource Defiant Kia-ET EX-91 VEVVE
Macpes Fortune Koquine-ET EX-95 EEEEE 2E
3-01 365d 30884 3.9 1203 3.5 1093
• Nom All-American Aged Cow 2014
• Res All-WI Aged Cow 2014
• All-Canadian 4yr-old 2012
• Grand Champion Rimouski 2012
Duhovent Talent Klody EX-91 2E-CAN
6-06 353d 35212 4.4 1116 3.3 829
Duhovent Allen Klodio VG-85-CAN 86-MS
3-00 346d 23512 4.0 933 3.5 825
Duhovent Casanova Kadyo EX-90-CAN EX-MS
4-08 365d 32937 3.5 1140 3.2 1038
Life: 1706d 157949 3.9 6131 3.3 5196
Duhovent Charles Kady VG-86-CAN 86-MS
6-05 365d 30872 4.2 1290 3.3 1008
Life: 7 Lact 222398 4.0 8882 3.4 7515
Stecroix Cady Boy George VG-85-CAN 86-MS
2-07 332d 27813 3.5 863 3.1 860

22

BEN & JENNIFER WALLACE AND TIM SMITH
3351 OLD STAGE RD
STOUGHTON, WI 53589
608-931-9832

MS NORRICH TIPSY TURVY-RED

3312790126
Born: June 2, 2025
Summer Yearling



SIEMERS ALL-TIPSY-RED-ET VG-85

Trent-Way-JS Rompen-Red-ET

3200914543 TP TC TY TV
PTA +780M -18F +7P 99R 12/25
PTA +1.92T +1.64UDC +1.37FLC 98R
GTPI +2630G

Siemers All Topsy-Red-ET

3260841650 Very Good-85 VG-MS @ 2-06
• Nom All-American R&W Summer Jr 2-Yr-Old 2025
• 1st Summer Jr 2-Yr WI Championship R&W 2025
• 4th Summer Jr 2-Yr International R&W 2025
Sire: Moovin

Maternal sister to Topsy:

Milksource Tantrum-Red-ET EX-92

• HM All-American R&W 5 Year Old 2024
• Res. All-American R&W 4 Year Old 2023
• Res. All-American R&W Sr. 3 Year Old 2022
• Res. All-American Sr. 2 Year Old 2021

2nd & 3rd Dams

Strans-Jen-D Tequila-Red-ET EX-96 EEEEE 2E
6-04 2x 365d 32840 4.3 1428 3.4 1116
Life: 1512d 118510 4.5 5327 3.4 3990
• Res All-American R&W Aged Cow 2017
• Res All-American R&W 5-Year-Old 2016
• Unan All-American R&W 4-Year-Old 2015
• Grand Champion International R&W Show 2015
• Unan All-American R&W Sr 3-Year-Old 2014
• Nom All-American B&W Sr 3-Year-Old 2014
• Grand Champion International R&W Show 2014
• Res All-American R&W Sr 2-Year-Old 2013
Jen-D Devil Tiffany-Red-ET EX-95 EEEEE 3E
8-07 2x 365d 36170 4.3 1546 3.0 1082
Life: 2282d 189780 4.2 8060 3.1 5867
• Seven time R&W All-American Nominee!
• Nom All-American R&W 125,000LB Cow 2015
• Nom All-American R&W Aged Cow 2014
• Nom All-American R&W 5-Year-Old 2012
• Nom All-American R&W 4-Year-Old 2011
• Nom All-American R&W Sr 2-Year-Old 2009

23

SARA, WYATT & CLAIRE DORSHORST
8371 MILL CREEK DR
MARSHFIELD, WI 54449
715-340-7271

FORWARD MISFIT-ET

3276439880 RC TC TV TL TD
Born: June 2, 2025
GTPI +2320G +1.91T
Summer Yearling

Maternal sister:

Forward White Winter-Red EX-90



JAS-K GUTHRIE TART-RED-ET EX-90 2E

Jacobs Showtime-ET

CAN 111576086 RC TE TC TY TC TL TD
PTA +549M +54F +34P 99R 12/25
PTA +1.91T +.84UDC +.50FLC 98R
GTPI +2685G

Forward Tilda-Red-ET

3136851256 Excellent-90 EEEVE TR TL TD
GTPI +1964G +1.90T
4-06 2x 262d 22330 4.6 1021 3.3 737
1-11 2x 235d 13310 4.9 650 3.3 442
3-02 2x 226d 12090 4.2 505 3.3 421
• 2nd Jr 2-Yr-Old Cow WI District 4 2018
• 3rd Summer Yearling R&W State Jr Show 2017
Sire: Beemer

Maternal sister to Tilda:

Forward Dehlia-Red-ET

• Res Jr All-American R&W Fall Yearling 2023

2nd thru 8th Dams

Jas-K Guthrie Tart-Red-ET EX-90 EEEVE 2E
2-00 2x 365d 23620 4.7 1121 3.6 853
Vande Shot Tiffany-Red-ET VG-88 VEEVV
4-03 2x 267d 21830 4.7 1024 3.1 678
Vande Mutant Logan-Red VG-88 EEVVV
4-04 2x 365d 28930 3.7 1084 3.3 960
• Jr All-American R&W Winter Yrlg Heifer 2007
Voight-Acres Laurier Linda VG-87 VG-MS RC
5-08 2x 365d 31970 4.3 1372 3.4 1100
Life: 2108d 127360 4.2 5308 3.5 4423
Voight-Acres Rudolph Indy VG-88 VG-MS
4-10 2x 365d 31300 3.2 1014 3.2 988
Voight-Acres Charles Cindy GP-82
2-00 2x 293d 16220 3.9 635 3.3 528
Voight-Acres Mark Christina VG-85 VG-MS
4-03 2x 365d 30150 3.8 1157 3.1 928
Life: 3026d 211920 3.7 7893 3.2 6689

24

JOHN DORSHORST
5781 COUNTY RD M
JUNCTION CITY, WI 54443
608-852-7321

DORSLAND BULLSEYE DEBONAIRE

3303042365
Born: December 3, 2025
Winter Calf



DORSLAND DONE TOR A DORA EX-94 2E

MB-Luckylady Bullseye-ET

3234629819 TR TP TE TC TY A2/A2
PTA +367M +17F +5P 93R 12/25
PTA +2.89T +1.72UDC +.88FLC 89R
GTPI +2605G

Dorsland Sideroad Dallas

3224626939 Good Plus-83 @ 2-10
2-04 2x 303d 20750 4.7 966 3.4 697
Will be rescored in April, 2026

2nd thru 11th Dams

Dorsland Dora Awesom Doodle VG-85 VG-MS
3-07 2x 289d 20550 4.2 864 3.3 680
Dorsland Done Tor A Dora EX-94 EEEEE 2E
4-10 2x 365d 27950 4.6 1275 3.4 961
Dorsland Done That VG-86 VVEVV
2-02 2x 365d 19110 4.1 806 3.5 660
Dorsland Daisy Drizzella-ET EX-92 EEEVE
3-03 2x 352d 26200 3.5 924 3.3 876
Dorsland Gibson Daisy-ET EX-90 EX-MS
3-02 2x 365d 25850 3.7 944 3.1 813
Dorsland Dawns Day-Dreamer EX-90 EVEVE
7-03 2x 365d 36510 3.5 1267 3.1 1124
Life: 2401d 173870 3.7 6444 3.0 5301
Dorsland Deb Chair-Val Dawn EX-90 EX-MS 2E
4-00 2x 365d 38000 3.1 1181 3.1 1182
Dorsland Voltage Dollar Deb GP-84
4-05 2x 296d 23140 3.4 776 3.0 685
Dorsland Dusty Mark My Dollar GP-80
3-00 2x 282d 17670 4.2 748 3.0 533
Dorsland Lucy Stardust EX-90 EEEV GMD DOM
7-05 2x 365d 32480 4.0 1313 2.7 875
Life: 2677d 170080 4.0 6720 2.8 3596

25

TIM SMITH
W1982 CHURCH RD
PULASKI, WI 54162
715-509-0033

NOR-RICH-ACRES AIRES-RED-ET

3276506565
Born: March 20, 2025
Spring Yearling



HILROSE ADVENT ANNA-RED-ET EX-95

Farnear Altitude-Red-ET
3128013348 TE TC TY TV TL TD
PTA -417M -24F -10P 99R 12/25
PTA +2.30T +1.60UDC +1.27FLC 99R
GTPI +2231G

Hilrose Unstbull Aba-Red-ET
3141071493 Excellent-92 EEEEE 2E
4-06 3x 365d 39210 3.8 1508 2.9 1141
5-11 3x 329d 39410 3.6 1404 2.9 1125
3-03 2x 365d 36290 4.0 1453 3.1 1123
2-00 2x 365d 31030 4.8 1485 3.0 925
Life: 1550d 155310 4.1 6327 3.0 4692

Maternal sisters to Aba-Red

Hilrose Redlite Aria-Red-ET VG-86
• Nom All-American R&W Spring Yearling 2022
Hilrose Redlite Amy-Red-ET VG-85
• Reserve All-American R&W Spring Calf 2021
• Junior All-American R&W Spring Calf 2021
Hilrose Altitude Aero-Red-ET VG-88 @ 2yrs
• Nom All-American R&W Spring Yearling 2021
• Nom All-American R&W Spring Calf 2020
Hilrose Avalnch Adel-Red-ET EX-90
• Res All-American R&W Milking Yearling 2020

2nd thru 11th Dams

Hilrose Advent Anna-Red-ET EX-95 4E GMD
7-02 2x 365d 47040 5.2 2456 3.3 1570
Life: 3482d 362320 4.8 17452 3.3 12033
• Reserve All-American R&W 125,000 Lb Cow 2017
• Reserve All-American R&W Aged Cow 2016
Hilrose Rubens Ashlyn EX-91 VEVEE GMD RC
4-06 2x 365d 35290 3.5 1223 3.1 1097
Wilstar Derry Alissa-ET EX-90 VEVEE 2E GMD RC
5-08 2x 365d 45920 4.7 2151 3.0 1381
Life: 1785d 170230 4.7 7955 3.3 5600
Wilstar-RS Ldr Angel-Red-ET EX-91 2E GMD
4-07 2x 365d 36810 4.4 1613 3.1 1152
Dreamstreet Enhancer Alicia EX-94 3E GMD
8-05 2x 365d 36370 4.9 1773 2.9 1069
Life: 3559d 224670 4.4 9974 3.1 7072
Dreamstreet Triple Ali-Red-ET EX-90 EVEE
5-02 2x 365d 24380 3.9 962 3.4 841
Cha-Liz R Maple B Ann EX-91 EEEE 2E
Life: 2190d 109421 3.8 4208
Cha-Liz F Mini Ann B EX-92 3E
Life: 2122d 108160 4.1 4422
Cha-Liz P V Ann Adeu B EX-92 VEVEE 2E
Life: 3200d 196887 3.7 7371
Wenron Adeu Ann Champion B EX-91 3E GMD
Life: 3600d 196626 3.7 7187

26

JACOB & CLAIRE BETLEY
W1630 REDWOOD DR
PULASKI, WI 54162
715-304-7773

BETLEY AMERICAS ASHES-ET

3309747610 RC TP TC TV TL TD
Born: June 23, 2025
GTPI +2427G +2.27T +1.54FLC
Summer Yearling



HILROSE MOOVIN ADELINA EX-94-CAN

Siemers Wolf Hulu 37006-ET
3245702863 RC TP TE TC TY TV TL TD
PTA +555M +19F +27P 82R 12/25
PTA +2.77T +2.01UDC +1.75FLC 81R
GTPI +2961G

Hilrose Jordy America-Red
3141071466 Excellent-92 EEEEE TC TL TD
GPTA +2.33T +2.01UDC +1.75FLC
3-00 2x 365d 34430 4.1 1413 2.8 956
2-00 2x 337d 28850 4.3 1252 2.9 841
4-03 2x 365d 25700 4.0 1017 2.9 736

Dam of:

Hilrose Moovin Adelina EX-94-CAN
• All-Canadian R&W Jr 2 Year Old 2022
• HM Grand Champion National R&W Show 2022

2nd thru 12th Dams

Hilrose Malone Atlas-Red-ET EX-90
3-00 2x 344d 31830 3.5 1110 3.1 1002
Hilrose Advent Anna-Red-ET EX-95 4E GMD
7-02 2x 365d 47040 5.2 2456 3.3 1570
Life: 3482d 362320 4.8 17452 3.3 12033
• Reserve All-American R&W 125,000 Lb Cow 2017
• Reserve All-American R&W Aged Cow 2016
Hilrose Rubens Ashlyn EX-91 VEVEE GMD RC
4-06 2x 365d 35290 3.5 1223 3.1 1097
Wilstar Derry Alissa-ET EX-90 VEVEE 2E GMD RC
5-08 2x 365d 45920 4.7 2151 3.0 1381
Life: 1785d 170230 4.7 7955 3.3 5600
Wilstar-RS Ldr Angel-Red-ET EX-91 2E GMD
4-07 2x 365d 36810 4.4 1613 3.1 1152
Dreamstreet Enhancer Alicia EX-94 3E GMD
8-05 2x 365d 36370 4.9 1773 2.9 1069
Life: 3559d 224670 4.4 9974 3.1 7072
Dreamstreet Triple Ali-Red-ET EX-90 EVEE
5-02 2x 365d 24380 3.9 962 3.4 841
Cha-Liz R Maple B Ann EX-91 EEEE 2E
Life: 2190d 109421 3.8 4208
Cha-Liz F Mini Ann B EX-92 3E
Life: 2122d 108160 4.1 4422
Cha-Liz P V Ann Adeu B EX-92 VEVEE 2E
Life: 3200d 196887 3.7 7371
Wenron Adeu Ann Champion B EX-91 3E GMD
Life: 3600d 196626 3.7 7187

27

COW CREW GENETICS
DERRICK KAMPHUIS
N4884 OAK GROVE RD
BRANDON, WI 53919
920-872-0244

MS HULU ACTIVATE

3309772096 RC
Born: September 1, 2025
Fall Calf



HILROSE REDLITE ARIA-RED-ET

Siemers Wolf Hulu 37006-ET

3245702863 RC TP TE TC TY TV TL TD
PTA +555M +19F +27P 82R 12/25
PTA +2.77T +2.01UDC +1.75FLC 81R
GTPI +2961G

Hilrose Redlite Amy-Red-ET

3236376756 Very Good-85 VG-MS @ 2-10
2-00 2x 365d 23440 4.7 1108 3.3 776

- Res All-American R&W Spring Calf 2021
- Jr All-American R&W Spring Calf 2021

Full sister:

Hilrose Redlite Aria-Red-ET VG-85

- Nom All-American R&W Spring Yearling 2022

2nd thru 11th Dams

Hilrose Advent Anna-Red-ET EX-95 4E GMD

7-02 2x 365d 47040 5.2 2456 3.3 1570

Life: 3482d 362320 4.8 17452 3.3 12033

- Reserve All-American R&W 125,000 Lb Cow 2017

- Reserve All-American R&W Aged Cow 2016

Hilrose Rubens Ashlyn EX-91 VEVEE GMD RC

4-06 2x 365d 35290 3.5 1223 3.1 1097

Wilstar Derry Alissa-ET EX-90 VEVEE 2E GMD RC

5-08 2x 365d 45920 4.7 2151 3.0 1381

Life: 1785d 170230 4.7 7955 3.3 5600

Wilstar-RS Ldr Angel-Red-ET EX-91 2E GMD

4-07 2x 365d 36810 4.4 1613 3.1 1152

Dreamstreet Enhancer Alicia EX-94 3E GMD

8-05 2x 365d 36370 4.9 1773 2.9 1069

Life: 3559d 224670 4.4 9974 3.1 7072

Dreamstreet Triple Ali-Red-ET EX-90 EVEE

5-02 2x 365d 24380 3.9 962 3.4 841

Cha-Liz R Maple B Ann EX-91 EEEE 2E

Life: 2190d 109421 3.8 4208

Cha-Liz F Mini Ann B EX-92 3E

Life: 2122d 108160 4.1 4422

Cha-Liz P V Ann Adeu B EX-92 VEVEE 2E

Life: 3200d 196887 3.7 7371

Wenron Adeu Ann Champion B EX-91 3E GMD

Life: 3600d 196626 3.7 7187

28

GARY BREITLOW
E5153 STATE HIGHWAY 54
ALGOMA, WI 54201
920-255-0494

BREITLOW ARCHITECT ANDI

3298239921 RC
Born: March 1, 2025
Spring Yearling



ANNA - 2018 WISCONSIN COW OF THE YEAR

Farnear Architect-ET

3214251590 RC TE TC TY TV TL

PTA -178M -33F -8P 95R 12/25

PTA +3.02T +2.27UDC +1.59FLC 93R

GTPI +2392G

Hilrose Altude Abel-Red-ET

3236376924 Very Good-85 VG-MS @ 2-06

1-11 3x 298d 23620 4.7 1111 3.7 844

Maternal sisters to Abel-Red

Hilrose Redlite Aria-Red-ET VG-86

- Nom All-American R&W Spring Yearling 2022

Hilrose Redlite Amy-Red-ET VG-85

- Reserve All-American R&W Spring Calf 2021

- Junior All-American R&W Spring Calf 2021

Hilrose Altitude Aero-Red-ET VG-88 @ 2yrs

- Nom All-American R&W Spring Yearling 2021

- Nom All-American R&W Spring Calf 2020

Hilrose Avalnch Adel-Red-ET EX-90

- Res All-American R&W Milking Yearling 2020

2nd thru 11th Dams

Hilrose Advent Anna-Red-ET EX-95 4E GMD

7-02 2x 365d 47040 5.2 2456 3.3 1570

Life: 3482d 362320 4.8 17452 3.3 12033

- Reserve All-American R&W 125,000 Lb Cow 2017

- Reserve All-American R&W Aged Cow 2016

Hilrose Rubens Ashlyn EX-91 VEVEE GMD RC

4-06 2x 365d 35290 3.5 1223 3.1 1097

Wilstar Derry Alissa-ET EX-90 VEVEE 2E GMD RC

5-08 2x 365d 45920 4.7 2151 3.0 1381

Life: 1785d 170230 4.7 7955 3.3 5600

Wilstar-RS Ldr Angel-Red-ET EX-91 2E GMD

4-07 2x 365d 36810 4.4 1613 3.1 1152

Dreamstreet Enhancer Alicia EX-94 3E GMD

8-05 2x 365d 36370 4.9 1773 2.9 1069

Life: 3559d 224670 4.4 9974 3.1 7072

Dreamstreet Triple Ali-Red-ET EX-90 EVEE

5-02 2x 365d 24380 3.9 962 3.4 841

Cha-Liz R Maple B Ann EX-91 EEEE 2E

Life: 2190d 109421 3.8 4208

Cha-Liz F Mini Ann B EX-92 3E

Life: 2122d 108160 4.1 4422

Cha-Liz P V Ann Adeu B EX-92 VEVEE 2E

Life: 3200d 196887 3.7 7371

Wenron Adeu Ann Champion B EX-91 3E GMD

Life: 3600d 196626 3.7 7187

29

SYNERGY FARM LLC
JAY JAUQUET
W2285 COUNTY RD S
PULASKI, WI 54162
715-822-4424

SYNERGY SPRITZER-RED

3248990412
Born: September 1, 2025
Fall Calf



SYNERGY SPIKES SEQUEL-RED EX-95

S-S-I Rebel Squibb-Red-ET

3253835793 TP TE TC TY A2/A2
PTA +620M +30F +24P 82R 12/25
PTA +1.89T +1.69UDC +.34FLC 81R
GTPI +2916G

Synergy Altitude Sizz-Red

327289874 Very Good-85 @ 2-05
2-00 3x 142d 9930 5.3 526 3.4 339 RIP

Full blood sister:

Synergy Spikes Sequel-Red EX-95 EEEEE

- Jr All-American R&W 4-Yr-Old 2023
- Res Jr All-American R&W Jr 3-Yr-Old 2022
- Jr All-American R&W Summer Jr 2-Yr-Old 2021
- HM All-American R&W Summer Jr 2-Yr-Old 2021

2nd thru 7th Dams

Synergy Scorchier-Red-ET EX-92 EEEEE

4-03 3x 304d 27500 5.1 1393 3.4 946

Synergy Always Smokin-Red EX-90 2E

7-02 3x 364d 35270 3.7 1301 3.0 1072

Life: 1847d 150190 3.9 5901 3.2 4802

• Res. Jr. All-American R&W Milking Yrlg. 2015

Synergy Absolute Salute-Red VG-88

4-02 3x 361d 30490 4.5 1380 3.6 1101

Life: 1298d 107110 4.4 4727 3.5 3738

Synergy Redlinr Speckle-Red VG-86 VG-MS

1-11 3 x 296d 26430 3.3 864 2.6 700

Glo-Crest RM Secret-Red EX-90 2E

4-10 2x 365d 36300 3.7 1349 2.7 998

Life: 1899d 156,910 3.9 6077 2.8 4403

Glo-Crest Alman Sierra-Red VG-85 VG-MS

5-04 2x 294d 22530 4.8 1084 3.4 757

Life: 1400d 103,660 4.6 4804 3.3 3429

30

RYAN SONNENBURG
N8405 COUNTY RD D
BELLEVILLE, WI 53508
608-516-6213

SONNENBROOK HULU LOLA-ET

3265836399
Born: December 2, 2025



LADYROSE CAUGHT YOUR EYE-ET EX-95

Siemers Wolf Hulu 37006-ET

3245702863 RC TP TE TC TY TV TL TD
PTA +555M +19F +27P 82R 12/25
PTA +2.77T +2.01UDC +1.75FLC 81R
GTPI +2961G

Genosource Mic Drop-ET

3233645591
GPTI +2630 +3.22T +1.60UDC +1.80FLC 12/25
Sire: Drop Box

Full sisters to Mic Drop:

Genosource Jawdropper-ET VG-88 +4.05T

- Junior All-American Fall Calf 2024
- Nom All-American Milking Yearling 2025
- 5th Milking Yearling Royal Winter Fair 2025

Genosource Pandoras Box-ET VG-87 +3.86T

Genosource Blackbox-ET VG-87 +3.48T

2nd thru 8th Dams

Ladyrose Caught Your Eye-ET EX-95

4-03 2x 365d 40,964 4.2 1731 3.2 1314

• Res All-American Produce of Dam 2024

• All-American 2021-2022-2023

• All-American Produce of Dam 2023

Rosedale Achieverslegacy-ET VG-89 EX-MS

1-09 2x 365d 26,380 5.1 1358 3.4 904

• All-American Milking Yearling 2017

Rosedale Lexington EX-95 2E 3*

• All-American 5-Yr-Old Cow 2013

Rosedale Lexi-ET VG-89 EEEVE *TR

2-02 2x 365d 26800 5.1 1356 3.1 837

• Res Int Champion Midwest Sprg/Nat 2007

• All-Wisconsin Jr 2-Yr-Old Cow 2006

• HM All-American Spring Yrlg Heifer 2005

Rosedale Lea-Ann-ET EX-93 2E GMD *RC

4-08 3x 365d 39370 3.4 1325 3.1 1202

Life: 1345d 120420 3.6 4315 3.2 3795

• 1st Jr 3-Yr-Old Cow Midwest Sprg/Nat 1998

Stookey Elm Park Blackrose-ET EX-96 3E GMD DOM

5-03 3x 365d 42230 4.6 1939 3.4 1432

Life: 1609d 149880 4.4 6621 3.3 4940

• All-Time All-American Jr 2-Yr & Jr 3-Yr-Old Cow

• Res All-American 5-Yr-Old Cow 1995

Nandette TT Speckle-Red-ET EX-93 DOM

4-08 2x 365d 25290 4.7 1195

• All-American R&W 1981 & 1984

31

JOSEPH SCHUH
W2172 COUNTY RD J
SEYMOUR, WI 54165
920-428-3949

SCHUH-VU HERITAGE ALLEYCAT

3296082229 RC PO TP TC TV TL TD
Born: July 2, 2025
GTPi +2506G +3.04T +1.79UDC +1.86FLC
Summer Yearling

• Entered in 2028 Outagamie County Futurity



MISS APLES ARIA-ET EX-92 2E RC

Duckett Max Heritage-P-ET

3272441990 RC PC TM TE TC TV TL TD A2/
A2
PTA +753M +0F +16P 82R 12/25
PTA +2.27T +1.66UDC +.92FLC 81R
GTPi +2686G

Schuh-Vu Rebel Allie-Red-ET

3201361959 Very Good-85 VG-MS @ 3-07 TP TC TL
GTPi +2220G +2.57T +1.48UDC +1.77FLC
2-00 3x 305d 23040 4.8 1103 2.8 641

Maternal sister:

Schuh-Vu Doc Ada VG-87

2nd thru 10th Dams

Golden-Oaks Arabian-Red-ET VG-88 EX-MS

1-11 2x 305d 21530 5.4 1165 3.5 750

Miss Apples Aria-ET EX-92 VEEVE 2E RC

3-10 3x 312d 29830 4.8 1444 3.4 1019

KHW Regiment Apple-Red-ET EX-96 4E DOM

9-01 2x 365d 36750 4.3 1582 3.3 1211

Life: 2898d 240640 4.7 11394 3.7 9013

• Unanimous All-American R&W 125,000 Lb 2013

• Unanimous All-American R&W Aged Cow 2011

• Unanimous All-American Jr 2-Yr-Old Cow 2006

• Res All-American R&W 125,000 Lb Cow 2014

Kamps-Hollow Altitude-ET EX-95 2E DOM RC

7-00 2x 365d 39690 4.7 1849 3.5 1385

Life: 1844d 144460 4.4 6295 3.7 5288

Clover-Mist Alisha-ET EX-93 3E DOM

8-07 2x 365d 36920 4.2 1553 3.4 1258

Life: 2999d 226470 4.7 10659 3.6 8149

Clover-Mist Augy Star-ET EX-94 4E DOM

7-10 2x 365d 43140 5.0 2136 3.3 1421

Life: 2486d 206250 4.7 9793 3.5 7187

D-R-A August EX-96 4E DOM

Life: 3443d 190200 4.4 8281 3.5 4818

• Nominated All-American Aged Cow 1986

D-R-A Ideal Precious Leader EX-90 2E

Life: 2456d 133250 4.0 5308

D-R-A Princess Lad Leader EX-90 3E

9-05 2x 305d 19160 4.2 809

32

CAMPBELL & ROYCE BOOTH
N6839 COUNTY RD E
PLYMOUTH, WI 53073
920-980-9659

BOOTH-HAVEN LEADING LADY

145842996 RC TC TV TL TD A1/A1
Born: September 1, 2025



BOOTH-HAVEN CLASSY LADY-RED EX-90 2E

Luck-E Dr Antidote-ET

3141305499 EX-91 RC TC TL TD
PTA -627M +15F +3P 95R 12/25
PTA +2.42T +1.19UDC +1.91FLC 94R
GTPi +2580G

Booth-Haven Fancy Lady-Red

145134626 Excellent-91 EEEEE @ 4-07 TC TL TD
3-04 2x 353d 30850 4.1 1328 3.3 1031
2-01 2x 305d 22250 4.1 904 3.2 708

Maternal sisterto My Fair Lady:

Booth-Haven Lady In-Red EX-90

• All-American R&W Spring Yearling 2016
• Junior Champion International R&W Show 2016

2nd thru 12th Dams

Booth-Haven My Fair Lady EX-94 EEEEE 2E RC

5-08 2x 309d 29250 3.9 1147 3.1 921

Booth-Haven Classy Lady-Red EX-90 EEEEE 2E

7-05 2x 355d 37830 3.9 1487 3.2 1216

• Jr All-American R&W Winter Yrlg Heifer 2014

• Res All-American R&W Winter Yrlg Heifer 2015

Milksource Cndr Lynn-Red-ET EX-90 EEEEE

3-09 2x 332d 25260 4.2 1052 3.5 879

• Res Jr All-American Fall Yrlg Heifer 2012

• HHM Jr All-American Fall Calf 2011

Wilstar-RS Tlt Limited-Red EX-94 EEEVE 2E

3-07 2x 365d 37420 4.1 1519 3.3 1221

• Reserve All-American R&W Aged Cow 2011

Wilstar-RS Kite Lover-Red EX-91 EEEVE 2E

4-07 2x 365d 41700 3.9 1627 3.3 1376

Wilstar-RS Rub Lazer-Red-TW EX-91 VEEEE 2E

4-02 2x 365d 40920 3.7 1532 3.3 1356

WVA-Greystone M Lexus-ET EX-91 EEEVE 2E *RC

4-04 2x 365d 28490 3.1 890 3.0 842

Hanover-Hill Charlylu-Red VG-85

Life: 2108d 164030 3.8 6183 3.6 5844

Hanover-Hill-R Lulu-Red-ET EX-91 EEEEE 2E

3-05 3x 365d 26620 3.9 1033 3.5 920

C Hanoverhill Sheik Lulu-ET EX-CAN *RC

Life: 2849d 206369 3.9 8136 3.5 7196

Tora Triple Threat Lulu EX-96 GMD DOM *11 STAR

3-04 2x 321d 22070 3.7 811

• Res All-Canadian Mature Cow 1981

• HM All-American 3-Yr-Old Cow 1978

33

KRISTA LUEDTKE
N324 COUNTY ROAD M
HORTONVILLE, WI 54944
920-779-0332

MARCH, 2026 CALF
Spring Calf

Siemers Hanan Hanx-P-ET
3243939096 PC TC TD TE TL TR TV TY
PTA 330M +40F +30P 90R 12/25
PTA 2.86T +1.74UDC 1.66FLC 86R
GTPI +3117G

Dreamhaven Gold Chip Reva
3124609735 Very Good-87 VG-MS
6-09 2x 365d 31603 4.0 1264 3.3 1039
Life: 1614d 111680 4.4 4874 3.5 3875



DREAMHAVEN TROPIC RIVIERA



DREAMHAVEN GOLD CHIP REVA VG-87

Maternal sisters to Spring Calf

Dreamhaven Tropic Riviera VG-85

• *Nom All-American Fall Yearling 2022*

• *Jr All-American Fall Yearling 2022*

Dreamhaven Chrome Rhetoric EX-90 EX-MS

Dreamhaven Crush Rexha VG-87 VG-MS

2nd thru 8th Dams

Dreamhaven Palermo Rave-ET EX-90 EEVVE

3-03 2x 305d 30630 3.4 1044 3.1 935

K&C-View Best Rascal VG-87 VG-MS

3-04 2x 365d 37360 3.6 1357 3.0 1128

K&C-View Integrity Risky EX-90 EX-MS

4-02 2x 343d 37200 3.7 1394 2.8 1059

Life: 1275d 113730 3.8 4323 3.0 3385

K&C-View Storm Roz EX-93 2E GMD DOM

7-04 2x 365d 50890 3.7 1883 2.8 1446

Life: 1325d 151109 3.8 5702 2.9 4430

Mistvale Jed Rozell EX-91 EEVVE GMD DOM

3-08 2x 365d 37150 3.8 1424 3.0 1108

Life: 1244d 117820 3.8 4535 3.2 3822

Mistvale Tesk Roz VG-87 VG-MS GMD DOM

3-03 2x 365d 31730 3.3 1060 3.3 1040

Life: 1727d 130220 3.8 4884 3.3 4307

Mistvale Mark Robyn VG-85 GMD DOM

4-07 2x 319d 32670 3.6 1192 3.2 1050

Life: 1932d 159410 3.4 5490 3.3 5245

34

PAYTON & JAVEN PRICKETTE
E7440 COUNTY RD C
CLINTONVILLE, WI 54929
920-209-9372

TNT-FARM FLASH GOLDEN

3312796872
Born: April 26, 2025
Spring Yearling

Mr Tatoo Flash-ET

3260842983 TR TP TM TE TC TY TV A2/A2

PTA -977M -57F -42P 82R 12/25

PTA +2.58T +1.59UDC +.86FLC 82R A2/A2

GTPI +1941G

Crisdhome Hanans Heart

3208399212 Good Plus-83 VG-MS @ 2-10



HAZELS GLDWN HATTY-ET EX-96 4E



QUALITY-RIDGE STORMI HAZEL EX-96 2E

2nd thru 6th Dams

Woodmansees Aval Patty-ET EX-91 EEVVE

3-00 2x 322d 25130 4.7 1178 3.5 882

Hazels Gldwn Hatty-ET EX-96 EEEEE 4E

11-9 2x 365d 37890 5.6 2133 3.1 1184

Life: 3615d 327830 5.1 16851 3.3 10715

• *Nominated All-American Aged Cow 2017*

• *Grand Champion Northeast Fall/Nat 2017*

Quality-Ridge Stormi Hazel EX-96 EEEEE 2E 3*

5-01 2x 365d 40320 4.6 1844 3.0 1204"

Life: 2061d 184130 4.3 7858 3.3 6044

• *Res All-American 125,000 Lb Cow 2011*

• *HHM All-American 125,000 Lb Cow 2010*

• *HHM All-American Aged Cow 2009*

• *Unanimous All-American 5-Year-Old 2008*

• *All-Canadian 5-Year-Old 2008*

• *HHM All-American 4-Year-Old 2007*

• *Unanimous All-American Jr 3-Yr-Old 2006*

• *HM All-American Jr 2-Year-Old 2005*

Quality-Ridge SS Heidi EX-90 EEVVE 2E

5-06 2x 305d 24290 3.7 908 3.2 780

Life: 2484d 156500 3.8 6021 3.3 5171

Quality-Ridge Astre Hazel VG-88 VEEVE

2-11 2x 305d 25900 3.6 926 3.3 866

35

OWEN & KENDYLL KRESS AND JUSTIN GIESE
10623 COUNTY RD XX
NEWTON, WI 53063
920-207-6523

MS KRESS-HILL SCATTER-RED-ET TW

3318776671
Born: December 1, 2025
Winter Calf



MS KRESS-HILL SAPHIRE-RED-ET EX-92 2E

LOH Dice-Red-ET

359824500 RC TC TL TV TY
PTA -730M -86F -34P 94R 12/25
PTA +1.78T +.91UDC +1.00UDC 93R
GTPI +1847G

Kress-Hill Snap-On -Red-ET

3260841678 Good Plus-83 @ 2-01
Sire: Luxor

• Maternal sister:

Kress-Hill Sparkle-Red VG-87-2YR-CAN VVVE

- Res All-American R&W Fall Calf 2022
- HM All-Canadian Fall Calf 2022

2nd thru 8th Dams

Ms Kress-Hill Sapphire-Red-ET EX-92 EEEEE 2E

2-05 2x 305d 28301 4.1 1167 2.9 821

- All-American R&W Fall Calf 2018
- Supremem Champion WDE Jr Show 2018
- Junior Champion International R&W Show 2018
- Res All-American Fall Yearling 2019
- Jr All-American Fall Yearling 2019
- Nom Jr All-American R&W Sr 2-Year-Old 2020

Siemers Destry Sunny-Red-ET EX-93 EEEEE 2E

3-08 2x 305d 32900 3.7 1232 3.3 1084

- 6x Junior All-American R&W Nominee
- HHM All-American R&W Produce of Dam 2018
- HM All-American R&W Produce of Dam 2020

Jerian Advent Sunny-Red-ET VG-85 VG-MS

- Res All-American R&W Winter Calf 2009

Jerian Rmrkr Saffron-Red-ET EX-91 EEEEE GMD

4-00 3x 365d 39590 3.2 1276 2.9 1132

3rd 4-Yr-Old Midwest Sprg/Nat R&W Show 2007

Jerian Milestone Sherry EX-94 4E GMD DOM *RC

Life: 4247d 413760 3.7 15379 3.0 13063

- All-Wisconsin 5-Year-Old 2000

Jerian Rookie Sunshine EX-94 3E GMD DOM

8-08 3x 365d 51870 3.7 1937 3.0 1555

Life: 2855d 280990 4.0 11200 3.2 9009

- Res All-Wisconsin 125,000 Lb Cow 1998

- All-Wisconsin Produce of Dam 1998

Berkshire-Valley Star Siss EX-93 5E GMD DOM

Life: 4230d 363730 3.8 13986 3.1 11098

36

KAMPHUIS FARMS LLC
STEVEN KAMPHUIS
N4884 OAK GROVE RD
BRANDON, WI 53919
920-872-0243

KAMPY BEST GUACAMOLE

33-09772095
Born: September 1, 2025
Fall Calf



BELLA-RIDGE GIN BLOSSOM-ET EX-93 2E

Blexys Best Sidekick-ET

3205758109 A2/A2
PTA -1364M -41F -33P 87R 12/25
PTA +1.40T +.19UDC +1.19FLC 75R
GTPI +1996G

Kampy Cadillac Groovy

3253906183 Very Good-87 VVVVV @ 3-03
1-10 2x 313d 21780 4.1 895 3.0 649



ROSEDALE GO FOR GIN-ET EX-93 2E

2nd thru 9th Dams

Kampy McCutchen Grace-ET EX-91 EEEEE

Kampy Durham Glamour-ET EX-90 EEEEV 2E

4-09 2x 331d 29370 3.9 1156 3.0 878

Life: 1522d 123230 4.1 5039 3.1 3847

Bella-Ridge Gin Blossom-ET EX-93 EEEEE 2E

4-00 2x 305d 29000 4.2 1213 3.2 937

- Nom Jr All-American Sr 2-Yr-Old Cow 2014

Rosedale Go For Gin-ET EX-93 EEEEE 2E

5-06 2x 365d 36020 4.6 1661 3.1 1124

Rosedale Lexi-ET VG-89 EEEVE *TR

2-02 2x 365d 26800 5.1 1356 3.1 837

- Res Int Champion Midwest Sprg/Nat 2007

- All-Wisconsin Jr 2-Yr-Old Cow 2006

- HM All-American Spring Yrlg Heifer 2005

Rosedale Lea-Ann-ET EX-93 2E GMD *RC

4-08 3x 365d 39370 3.4 1325 3.1 1202

Life: 1345d 120420 3.6 4315 3.2 3795

- 1st Jr 3-Yr-Old Cow Midwest Sprg/Nat 1998

Stookey Elm Park Blackrose-ET EX-96 3E GMD DOM

5-03 3x 365d 42230 4.6 1939 3.4 1432

Life: 1609d 149880 4.4 6621 3.3 4940

- All-Time All-American Jr 2-Yr & Jr 3-Yr-Old Cow

- Res All-American 5-Yr-Old Cow 1995

Nandette TT Speckle-Red-ET EX-93 DOM

4-08 2x 365d 25290 4.7 1195

- All-American R&W 1981 & 1984

37

DYLAN & CAMERON RYAN
N4067 TWIN OAKS DR
FOND DU LAC, WI 54937
920-923-3528

RYAN-VU ARCHITECT DREAMER

3291256047 RC
Born: September 2, 2025
Fall Calf



RYAN-VU ARMANI DESIGN-RED EX-94 2E

Farnear Architect-ET

3214251590 RC TE TC TY TV TL
PTA -178M -33F -8P 95R 12/25
PTA +3.02T +2.27UDC +1.59FLC 93R
GTPI +2392G

Ryan-Vu Altitude Dazzle-Red

3247085587 Very Good-85 @ 2-03
2-00 2x 157d 9485 4.3 409 3.2 306 RIP



HAUVE MR BURNS DAYNA-ET EX-93 3E

2nd thru 10th Dams

Ryan-Vu America Docile-Red VG-86 VVVVV
3-00 3x 305d 28410 3.9 1113 3.3 937
Ryan-Vu Malone Dario-Red VG-87 EVVVV
3-04 2x 303d 31230 4.5 1092 3.4 1074
Ryan-Vu Armani Design-Red EX-94 EEEEE 2E
4-11 2x 347d 40970 4.4 1822 3.5 1415
Life: 1843d 182910 4.3 7894 3.4 6176
Kranzdale R-V Division-ET EX-92 EX-MS 2E
4-05 2x 305d 30240 4.7 1408 3.2 975
Life: 1669d 140070 4.3 5992 3.3 4685
Hauve Mr Burns Dayna-ET EX-93 EEVVE 3E
4-07 2x 365d 34170 4.0 1353 3.3 1130
Life: 1443d 126190 4.1 5225 3.3 4182
Hauve Rubens Dena-ET EX-92 2E DOM *RC
6-00 2x 365d 31800 4.2 1344 3.3 1064
Life: 1857d 133770 4.5 5996 3.5 4666
Snow-N-Jet Diana-ET EX-92 EEEVE 3E
8-00 2x 365d 30580 3.7 1132 3.0 930
Life: 2203d 135960 4.1 5547 3.3 4480
Snow-N Dellias Destiny-ET EX-91 EEVVE DOM
9-00 2x 365d 28740 3.5 997 3.1 903
• 2nd Jr 3-Yr-Old Cow Mid-West Sprg/Nat 1993
Snow-N Denises Dellia EX-95 2E GMD DOM
7-06 2x 365d 35610 4.0 1431 3.1 1103
Life 2558d 180240 3.9 7108 3.4 6065
• Grand Champion Mid-West Sprg/Nat 1991

38

SELDOM SEEN GENETICS
5398 COUNTY HWY A
BLOOMER, WI 54724
715-495-5265

MAYERLANE-TE DAMSEXNCANDY

3214444014 RC TC TL TD
Born: September 20, 2024
GTPI +2187G +2.86T +1.43UDC +1.60FLC
Fall Yearling

Due: Sept. 15, 2026 to Sunquest Drop N Hot-ET
7H017379 GTPI +3157G +778M +2.75T



SCIENTIFIC GOLD DANA RAE-ET EX-95 2E

MB-Lucky-Lady Eye Candy-ET

3234629820 TR TP TE TC TY TV TL A1/A2 BB
PTA -523M +0F +5P 96R 12/25
PTA +3.02T +2.09UDC +1.50FLC 96R
GTPI +2596G

DJLPurepride Damsel-ET

3242508999 Very Good-87 VG-MS RC
2-02 2x 322d 21663 4.3 941 3.1 672
Sire: Warrior



SCIENTIFIC DEBUTANTE RAE EX-92 GMD DOM

2nd thru 10th Dams

Budjon-JK Absolt Duchess-ET EX-92 EEVVE 2E
6-02 3x 365d 35370 3.8 1334 3.1 1110
Life: 1584d 143760 4.2 6096 3.4 4867
Scientific Gold Dana Rae-ET EX-95 EEEEE 2E
4-04 2x 345d 39270 4.1 1606 2.9 1154
• Res All-American 5-Yr-Old 2012
Scientific Debutante Rae-ET EX-92 GMD DOM RC
2-02 2x 365d 32930 4.4 1440 3.4 1132
• All-American 4-Yr-Old Cow 2005
Scientific Jubilant Rae-ET EX-90 DOM RC
5-11 2x 365d 38880 4.1 1608 3.6 1403
C Hanoverhill Tony Rae EX-96 3E GMD DOM
6-11 2x 365d 40220 4.1 1661 3.3 1331
Life: 2247d 166396 4.1 6904 3.4 5612
• HM All-American Jr 2-Yr-Old Cow 1988
C Hanoverhill TT Roxette-ET EX-94 2E GMD
10-0 3x 365d 35040 4.3 1519 3.0 1063
Life: 2104d 164789 4.1 6760 3.1 3587
Mil-R-Mor Roxette EX-CAN *30 STAR
7-01 2x 365d 24531 4.7 1153
Life: 6 Lact 121418 4.7 5728
C Glenridge Citation Roxy EX-97 4E GMD
Life: 3620d 209784 4.5 9471
C Norton Court Model Vee EX-90
Life: 4183d 218629 3.9 8581
• All-American Produce of Dam 1977, '78, '79

39

JAKE KRUSCHKE
1471 220TH AVENUE
NEW RICHMOND, WI 54017
715-220-5364

CRISDHOME LAMBDA TUSCALOOSA

3208399357

Born: July 6, 2025

Summer Yearling



VANGOH DURHAM TREASURE EX-96 3E

Farnear Delta-Lambda-ET

3125993715 GM 12/20 TR TP TE TC
PTA +735M +13F +21P 99R 12/25
PTA +2.20T +1.87UDC +1.15FLC 99R
GTPI +2882G

Crisdhome Doc Talina-ET

3208399228 Good Plus-84 @ 2-02

Maternal sister to Talisa

Duckett G Chip Tokyo-ET EX-93

3-09 2x 365d 32930 3.9 1277 3.3 1076
•Res All-American Milking Yearling 2015

2nd thru 8th Dams

Duckett Octane Talisa-ET EX-94 EEEEE 2E

6-07 2x 365d 32330 4.6 1486 3.2 1037
Life: 2320d 182090 4.5 8127 3.4 6157

Vangoh Durham Treasure EX-96 EEEEE 3E

Life: 2919d 249620 3.8 9586 3.3 8204
• Res Grand Champion Midwest Sprg/Nat 2014
• HM Sr Champion Midwest Sprg/Nat 2013
• Res All-American Aged cow 2011

• Nom All-American 125,000 Lb Cow 2010
• Res Grand Champion Midwest Sprg/Nat 2010
• Best Udder of Show Midwest Sprg/Nat 2009 & 2010
• Nom All-American Sr 3-Yr-Old Cow 2007
• 4th Sr 3-Yr-Old Cow Interanational Show 2007

Debello-Hills A Trinity-ET VG-87 VG-MS

3-05 3x 306d 25610 3.5 907 3.3 839

Debello-Hills Star Trixster EX-90 EEVVE

5-11 3x 365d 37430 3.5 1305 2.9 1098
Life: 2521d 211470 3.7 7792 3.1 6463

Rol-Chris Astro Jet Trixie EX-94 3E GMD DOM

7-06 3x 347d 34320 3.4 1156 3.0 1042
Life: 2724d 225180 3.4 7732 3.1 6889

Apple-Lawn Matt Thea VG-88 VVEV

6-01 2x 035d 24880 3.2 802 2.9 730
Life: 2105d 130130 3.1 4099 3.0 3900

Apple-Lawn Beau Trena VG-85

3-04 2x 347d 17610 4.3 752 3.5 617

40

HAMMERTIME HOLSTEINS
W8614 STEVENSON DR
POYNETTE, WI 53955
920-639-5500

HAMMERTIME CRSHABUL RANILLA

3286696353

Born: September 2, 2025

Fall Calf



HAMMERTIME WINDBROOK RENO EX-93

Oh-River-Syc Crushabull-ET

3135145001 TR TP TC TY TV
PTA -196M -62F -20P 99R 12/23
PTA +2.52T +1.69UDC +.61FLC
GTPI +2123G

Hammertime GC Rad Rilla

328669359 Good Plus-83 @ 2-05
2-00 2x 151d 10625 4.9 516 3.2 341 RIP



MILKSOURCE GOLDWYN RHEA-ET EX-91

2nd thru 10th Dams

Hammertime Sidekick Rilla E90 EVEVE

2-04 2x 305d 23580 3.9 913 3.3 778

Maternal sister to Rilla:

Hammertime Windbrook Reno EX-93 EEEVE

5-02 2x 299d 33190 5.3 1739 3.5 1158
• Junior Champion WI Championship Show 2013
• Junior Champion WI District 5 Show 2013
• 5th Spring Yearling International Show 2013

Hammertime Allway Rilla-ET VG-85 VG-MS

3-04 2x 305d 23700 4.6 1093 3.4 816

Milksource Goldwyn Rhea-ET EX-91 EEVVE

3-03 2x 305d 27140 3.9 1052 3.2 857

Mell-Wood Durham Reese EX-91 EX-MS

5-05 2x 365d 38910 4.3 1666 3.2 1237

Mell-Wood Rhero Ranee VG-88 EX-MS

6-03 2x 365d 28250 3.6 1011 3.0 856
Life: 1670d 135840 3.2 4291 3.0 4140

Mell-Wood Prescot Rainbo GP-83

1-11 2x 316d 21530 4.1 893 3.3 701

Mell-Wood Prelude Roxidy-ET VG-87

4-06 2x 365d 36920 4.2 1546 3.3 1214
Life: 2595d 207190 4.1 8468 3.3 6887

Pride Thor Roxette EX-91 2E GMD DOM

2-11 2x 365d 36190 4.4 1582 3.4 1232

Pride Ned Boy Racquel VG-85 GMD DOM

3-03 3x 365d 34320 3.5 1215 3.2 1087

41

BRIANNE, BROOKLYN & REID VANDOSKE
W1823 COUNTY LINE RD
CLEVELAND, WI 53015
920-377-0502

VANDOSKES ROMPEN 7210-RED

3309771240
Born: September 2, 2025
Fall Calf



FRADON REDMAN JUBILEE-RED-ET EX-92

Trent-Way-JS Rompen-Red-ET

3200914543 TP TC TY TV
PTA +780M -18F +7P 99R 12/25
PTA +1.92T +1.64UDC +1.37FLC 98R
GTPI +2630G

Vandoskes Warrior 5534-Red

3239140808 Very Good-87 VG-MS @ 3-02
2-10 3x 291d 29400 4.1 1215 3.3 966
1-11 3x 276d 24160 4.5 1096 3.2 762



FRADON ENCOURT JODIE-RED EX-94 3*

2nd thru 11th Dams

Vandoskes Addiction Joy-Red GP-83 PO
4-05 3x 305d 28900 4.9 1412 3.2 929
Siemers Jubile-Queen-Red-ET
3-06 3x 305d 22040 4.1 904 3.2 697
Fradon Redman Jubilee-Red-ET EX-92 EEEEE
3-08 3x 365d 34140 5.2 1764 3.2 1100
• Res All-American R&W 4-Yr-Old 2010
• Grand Champion Midwest Sprg/R&W Show 2010
Fradon Encount Jodie-Red EX-94-CAN 3*
5-08 2x 355d 29815 4.8 1441 3.3 987
• All-American R&W Aged Cow 2008
• HM All-Canadian R&W Aged Cow 2008
• Grand Champion Ontario R&W Show 2008
• Grand Champion Quebec Intern'l R&W 2006
• Nom All-American R&W Jr 2-Yr-Old Cow 2004
Fradon Rudolph Jodie-ET EX-2E-CAN 6*
4-03 2x 365d 33237 4.5 1479 3.2 1069
Life: 5 Lact 132951 3.9 5247 3.2 4306
Bridon Inspira Jodie EX-CAN 5*
3-05 2x 299d 19015 4.1 780 3.2 613
Bridon Threat Janice VG-86 VG-MS-CAN
5-04 2x 365d 20598 4.8 990 3.6 745
Bridon Empress Jody-ET VG-85-CAN
7-08 2x 365d 20723 4.1 844 3.4 710
Life: 7 Lact 132935 4.1 5476 3.5 4614
Moeracres Rockette Jean VG-88-CAN 3*
Moeracres Audrey Joan EX-92 2E

42

EMILY STUMPF
501 W SENECA DRIVE
APPLETON, WI 54911
920-585-4949

VALLEY-DRIVE CADILLAC TAJIN

3257570300
Born: June 6, 2025
Summer Yearling



RICECREST SOUTHWIND KAYE-ET VG-87 GMD DOM

Kings-Ransom D Cadillac-ET

3208782414 TR TP TE TC TY TV TL TD
PTA +477M +15F +2P 98R 12/25
PTA +2.19T +1.09UDC +1.14FLC 96R
GTPI +2573G

Valley-Drive Jacoby Tandori

3215430990 Very Good-85 VG-MS @ 2-01
1-09 3x 294d 29570 4.7 1396 3.4 1001

2nd thru 12th Dams

Valley-Drive Sanchez Thyme EX-91 EEEEE
Life: 1269d 110622 4.6 5062 3.4 3805
Valley-Drive Hero Tarapin EX-91 EEEEE 3E
Life: 2420d 229666 4.6 10551 3.4 7756
Valley-Drive Gldwyn Tarable EX-90 EX-MS
Valley-Drive AM Tarasa-ET VG-85
Ricecrest Terry Tara-ET GP-83
2-09 2x 365d 38370 4.0 1521 3.1 1208
Ricecrest Luke Lauren-ET EX-91 GMD DOM
6-06 2x 365d 32410 3.6 1162 3.0 968
Ricecrest Southwind Kaye-ET VG-87 GMD DOM
5-00 2x 365d 39450 4.1 1633 3.4 1333
Ricecrest Ned Boy Noreen-ET EX-91 2E GMD
7-04 2x 365d 35260 4.2 1489 4.0 1049
Life: 2636d 172940 4.2 7338 3.2 5481
Ricecrest Jemini Jayanna VG-87 VG-MS DOM
10-2 2x 365d 32070 4.1 1323 2.8 905
Life: 2962d 210730 4.0 8395 2.9 6150
Ricecrest Elevation Ella VG-86 VVVV DOM
7-08 2x 365d 25010 3.5 871 2.8 692
Life: 2456d 153140 3.6 5460 2.9 4007
Terracelane Ideal Star VG-88 VVEV DOM
7-08 2x 365d 26990 3.9 1045
Life: 2924d 191640 3.7 7098

43

CATHRYN & CHRISTOPHER GUNST
N3687 30TH DR
PINE RIVER, WI 54965
920-987-4271

WILSTAR ROMPEN DELIGHT-RED

3287108166
Born: September 1, 2025
Fall Calf



FARMDALE CANYON DAZZLE EX-94 4E GMD DOM

Trent-Way-JS Rompen-Red-ET

3200914543 TP TC TY TV
PTA +780M -18F +7P 99R 12/25
PTA +1.92T +1.64UDC +1.37FLC 98R
GTPI +2630G

Wilstar Style LD Diamond

3287108158 Good Plus-84 @ 2-06 RC

2nd thru 9th Dams

Wilstar Altitude Drama-Red VG-85 VG-MS
Wilstar Ammo P Darling-Red VG-88 EVEVV
5-05 2x 365d 30590 4.9 2488 3.0 904
Life: 1478d 108930 4.6 3.2 3463
Wilstar Dback Dimension-Red EX-90 EX-MS
1-11 2x 284d 19670 3.5 682 3.3 655
Wilstar Acme Delicious-Red EX-90 2E
5-07 2x 363d 35870 3.8 1359 3.3 1172
Life: 1338d 113270 3.8 4304 3.4 3815
Wilstar Destry Delite-ET VG-88
5-06 2x 360d 36790 4.6 1678 3.4 1264
Life: 2231d 192270 4.6 8807 3.5 6776
Farmdale Canyon Dazzle *RC 4E-94 GMD DOM
6-00 2x 365d 42720 4.8 2037 3.5 1478
Farmdale Integrity Dixie *RC EX-94 3E
5-00 2x 365d 38220 4.1 1564 3.2 1230
Life: 2479d 179670 4.2 7489 3.5 6252
• *Nom Jr All-American 5-Yr-Old 2002*
• *2nd 5-Yr-Old Mideast Fall National 2002*
• *Embryos exported worldwide*
Farmdale South Dimple VG-86
7-02 2x 343d 35350 3.9 1378 3.5 1238

44

MINGLEWOOD, INC.
60 105TH ST
DEER PARK, WI 54007
715-338-4192 KRISTIN

E-DONK ALTITUDE LUNA-RED-ET

3285301195
Born: June 3, 2025
GTPI +2042G +1.67T +1.40FLC



KEVETTA DANIEL LEXI EX-94 2E

Farnear Altitude-Red-ET

3128013348 TE TC TY TV TL TD
PTA -417M -24F -10P 99R 12/25
PTA +2.30T +1.60UDC +1.27FLC 99R
GTPI +2231G

Oakfield Jo Lumineer-Red-ET

3208034284 Very Good-87 EVVVV @ 2-10
2-02 2x 319d 18150 4.4 803 3.2 582
• *All-American R&W Spring Yearling 2021*
• *Jr All-American R&W Spring Yearling 2021*
• *6th Jr 2-Yr-Old International R&W Show 2022*

Maternal sister:

Kevetta Daniel Lexi RC EX-94 2E
4-05 2x 365d 42020 4.4 1865 3.3 1394
• *Res. All-American Sr 3-Yr-Old 2020*
• *Res Grand Champion NE Summer Show 2020*

2nd thru 9th Dams

Kevetta Rdbrst Lucious-Red EX-94 EEEEE
4-02 3x 365d 32580 4.2 1369 3.1 1009
• *2nd 5 Year Old NY Spring R&W Show 2018*
• *Grand Champion WNY Show 2017*
• *Grand Champion R&W WNY Spring 2017*
Oakfield Reality Lulu-Red-ET EX-90 2E
5-04 2x 305d 32270 4.8 1542 3.2 1022
Life: 1342d 126600 4.6 5770 3.3 4139
Liddleholme Lulu-Red-ET EX-90 EX-MS
3-09 3x 365d 36870 4.3 1571 3.2 1174
Brigeen-HH Sept St Lulu-Red EX-91 2E
3-10 2x 365d 29660 4.2 1258 3.2 958
Hanoverhill Mae Lulu-ET B/R EX-90
4-04 2x 365d 33530 5.1 1696 3.4 1126
C Hanoverhill Sheik Lulu-ET EX-CAN *RC
9-03 2x 365d 39020 3.8 1484 3.3 1302
Life: 2849d 206369 3.9 8136 3.5 7196
Tora Triple Threat Lulu EX-96 GMD DOM 11*
3-04 2x 321d 22070 3.7 811
• *Res All-Canadian Mature Cow 1981*
• *Nom All-Canadian Mature Cow 1980*
• *HM All-American 3-Yr-Old Cow 1978*
Ormsby Lougo Alta EX-90 GM

45

ERIC HAUPT
12012 US HIGHWAY 151
MANITOWOC, WI 54220
920-901-2187

GJERPEN HAZE DELIGHT-RED

3305523148 TC TV TL TD
Born: December 22, 2024
GTPI +2396G
Winter Yearling

AOT Redeye Haze-P-Red-ET

3232427677 PC CD TE TY TV TL TD A2/A2
PTA +342M +31F +17P 88R 12/25
PTA +1.47T +.86UDC +.85FLC 82R
GTPI +2866G

Lake-Breeze US Delivery-Red

3217419843 Very Good-86 VG-MS @ 4-06 TC TL TD
4-03 2x 292d 30310 4.1 1243 2.8 863
3-03 3x 297d 27910 3.8 1058 2.9 797

2nd thru 8th Dams

Lake-Breeze MS Delta-Red-ET VG-86

4-04 3x 365d 46830 4.4 2046 3.2 1476
Life: 1170d 117960 4.1 4871 3.1 3683

Budjon-Vail Deidra-Red-ET EX-94 EEEEE

4-04 3x 365d 40270 3.1 1262 3.1 1236
Life: 1135d 118580 3.4 4009 3.1 3647

• *HMM All-American R&W Milking Yrlg 2013*

• *All-American R&W Fall Calf 2012*

Budjon Redmarker Desire EX-96 3E GMD *RC

5-03 2x 365d 47540 4.2 1998 2.9 1394
Life: 2637d 255630 4.0 10213 3.0 7687

• *All-American 5-Year-Old 2005*

• *Six-time All-American Nominee*

Triple-A Danee EX-92 EEEEE 3E

8-02 2x 312d 34210 4.1 1392 3.1 1052
Life: 1957d 148520 4.1 6058 3.3 4963

• *All-American Produce of Dam 2007*

Triple-A Linc Fancy EX-90 EEEVE 2E

7-06 2x 365d 23120 4.4 1025 3.3 758
Life: 2565d 155090 4.3 6698 3.4 5169

C Lessia Warden Pre Foxie EX-90 EEEV

Life: 2251d 120216 4.0 4771 3.2 3902

Lessia Pre Foxie VG-85-2YR-CAN 1*

Life: 10 Lact 194459 4.0 7738 3.2 5765



BUDJON-VAIL DEIDRA-RED-ET EX-94



BUDJON REDMARKER DESIRE EX-96 3E GMD

46

JAMES SATTLER
W2136 BEECHNUT LN
POY SIPPI, WI 54967
920-987-5049

POY-SIPPI DANACA D LOMBARDI

3250031072
Born: January 8, 2026
Winter Calf

Townlineacre DL Lombardi-ET

3245704329 TC TD TE TL TM TP TR TV TY
PTA -185M -1F +0P 81R 12/25
PTA +2.80T +2.19UDC +1.43FLC 82R
GTPI +2710G

Poy-Sippi Danaca Doc

3215447576 Good Plus-83 @ 4-05
3-00 2x 365d 30061 4.4 1318 3.3 1003
2-00 2x 323d 20041 4.5 902 3.4 686

2nd thru 7th Dams

Mayerlane Bradnik Danaca-ET GP-82

2-11 2x 283d 15423 3.7 576 3.0 462

Heritage-E Debbies Danae-ET EX-91 EEEVE 3E

5-03 3x 365d 34410 3.8 1321 3.2 1107
Life: 2621d 222170 4.1 9062 3.1 6989

Ky-Blue GW Debbie-ET EX-94 EEEEE 3E

8-06 2x 305d 32580 3.9 1274 2.9 960
Life: 1816d 128030 3.9 5050 3.2 4070

• *All-American Summer Yrlg Heifer 2009*

BVK Outside Diana-ET EX-92 EEEVE 2E DOM

5-01 2x 365d 31920 3.5 1129 3.2 1034
Life: 1544d 107400 3.5 3708 3.3 3549

Ms Kingstead Chief Adeen-ET EX-94 2E DOM

3-05 2x 310d 30180 4.0 1209 3.6 1077
Life: 1382d 100760 4.0 4010 3.6 3649

• *Nom All-American Jr 3-Yr-Old Cow 2000*

• *Nom All-American 4-Yr-Old Cow 2001*

• *Member All-American Produce 2000 & 2001*

C Aitkenbrae Starbuck Ada EX-94 2E DOM 4*

5-06 2x 356d 30055 3.5 1043 3.5 1049
Life: 6 Lact 137732 3.4 4749 3.4 4647

• *All-American Produce of Dam 2000, 2001*

• *All-American 3-Yr-Old Cow 1990*

• *Res All-Time All-American Sr 3-Yr-Old*



HERITAGE-E DEBBIES DANA-E-ET EX-91 3E



KY-BLUE GW DEBBIE-ET EX-94 3E

47

MAR-LINDA-K HOLSTEINS LLC
MARK WRIGHT
W3811 COUNTY RD B
JOHNSON CREEK, WI 53038
920-253-9398

BUYER'S CHOICE

Three Spring Calves

Born: March, 2026

Haveitall Dropbx Hellion-ET

3272442039 TC TD TE TL TM TP TR TV TY A2/A2

PTA +982M +32F +33P 82R 12/25

PTA +3.20T +1.97UDC +1.22FLC 82R

GTPI +2932G

Mar-Linda-K Delta-Lam Deeva

3243110505 Excellent-90 EX-MS @ 4-03

3-02 2x 289d 30640 4.6 1418 3.2 900

2-02 2x 322d 28120 4.8 1338 3.3 917

2nd thru 9th Dams

Klug-View Jacoby Duet GP-81 VG-MS

Klug-View Doe Rae Me GP-82

1-10 2x 329d 19790 3.9 765 3.4 665

Mar-Linda-K Damion Rae-Lae VG-87 VVEVV

5-03 2x 352d 26370 3.6 959 3.4 907

Life: 2020d 154820 3.5 5473 3.4 5223

Mar-Linda-K Affirm Raelynn EX-91 EEEEE

5-04 3x 349d 32090 3.5 1127 3.2 1035

Life: 1294d 104420 3.7 3859 3.1 3230

• *Jr All-American Jr 3-Yr-Old 2011*

• *Res Grand Champion Wisconsin State Fair 2012*

Mar-Linda-K Sam Raeann-TW GP-84 VG-MS

2-04 2x 330d 27830 3.0 827 3.0 825

Mar-Linda-K Juror Roxie VG-85

7-03 2x 361d 32320 4.0 1288 3.1 990

Life: 1929d 147780 3.6 5321 3.1 4609

Mar-Linda-K Most Rosie GP-83

4-11 2x 305d 26140 4.3 1129 3.0 782

Life: 1476d 115410 4.3 5012 3.0 3451

Mar-Linda-K Stuffy Rose VG-86 VG-MS

5-00 2x 305d 26680 3.6 950 2.9 767

Mar-Kinda-K Rosette VG-86 VG-MS

48

MARK & ANGIE ULNESS
4718 COUNTY RD J
VALDERS, WI 54245
920-775-4794

RAGNAR EPIPHANY COLBY

3323633221

Born: December 5, 2025

Winter Calf

D2 Dropbox Epiphany-ET

3267547791 A2/A2

PTA +395M +0F +26P 81R 12/25

PTA +3.34T +2.46UDC +1.63FLC 81R

GTPI +2842G

Ragnar Score Cheeseurd

3208252856 Very Good-86 VG-MS

5-03 2x 347d 29150 4.3 1253 3.4 1003

3-01 2x 361d 25960 4.5 1159 3.4 871

1-10 3x 365d 22000 4.3 955 3.4 750

2nd thru 6th Dams

Ragnar Dempsey Constance EX-91 EEVVE 2E

6-03 2x 353d 28530 4.6 1323 3.3 936

Life: 1670d 122910 4.3 5341 3.4 4137

Ragnar Alexander Connie-ET VG-88 VG-MS

1-11 2x 365d 19110 4.5 862 3.5 665

Ragnar Durham Callia-ET EX-90 EEVVE 2E

4-09 2x 365d 32540 4.1 1320 3.5 1133

Life: 1643d 123860 3.8 4671 3.4 4198

Ragnar Linjet Callie EX-93 3E GMD DOM

4-04 2x 365d 38250 3.9 1477 3.2 1240

Life: 2957d 243410 3.8 9290 3.3 7969

Lynncreek Calypso Maurita EX-90 EEEEV

9-06 2x 365d 23940 3.6 861 2.9 694

Life: 2298d 147450 3.7 5443 3.1 4561



RAGNAR DURHAM CALLIE-ET EX-90 2E



RAGNAR LINJET CALLIE EX-93 3E GMD DOM

49

NIKKI STEFFENHAGEN
W2092 CHURCH DRIVE
PULASKI, WI 54162
262-455-0369

MARCH CALF RC

Born: March, 2026

Siemers Wolf Hulu 37006-ET

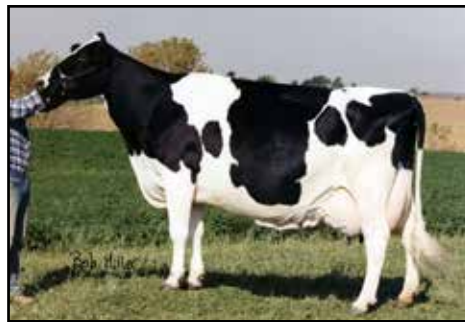
3245702863 RC TP TE TC TY TV TL TD
PTA +555M +19F +27P 82R 12/25
PTA +2.77T +2.01UDC +1.75FLC 81R
GTPI +2961G

NK-Stef Unstpbl Totally-Red

3225617767 Excellent-90 EEEEV @ 4-03
3-11 3x 284d 23610 4.2 994 3.1 736
• 2nd Spring Calf NAILE 2021



NK-STEFF UNSTPBL TOTALLY-RED AT NAILE



C GLENRIDGE CITATION ROXY EX-97 4E GMD

2nd thru 14th Dams

Kamps-Hollow Tessi-Red GP-82
Kamps-Hollow Candy-Red
Stone-Front Braxton Camdle GP-82
5-00 2x 305d 31060 3.9 1215 2.7 833
Stone-Front Pont Carnival G-77
6-01 3x 314d 36030 2.8 1001 2.7 987
Life: 1592d 127219 2.9 3719 2.7 3460
Stone-Front Ti Cotton Candy VG-88 EEVVV
7-06 2x 308d 30020 2.9 856 3.9 877
Life: 2026d 170440 3.1 5217 2/9 5021
Wilcoxview Gbsn Candy-ET EX-91 EEEVE 2E
4-01 2x 365d 33940 3.7 1241 3.1 1059
Life: 1998d 157400 3.7 5819 3.0 4656
Wilcoxview Rudolph Candace EX-92 EEEEE DOM
3-05 2x 365d 27620 4.2 1172 3.5 972
Wilcoxview Mason Candace-ET VG-88 VG-MS
3-02 2x 365d 20550 3.7 751 3.5 719
Scientific Cinderella-ET VG-88 EX-MS
1-11 2x 365d 29950 3.2 967 3.1 919
C Hanoverhill Tony Rae EX-96 3E GMD DOM
6-11 3x 365d 40220 4.1 1661 3.3 1331
Life: 2247d 166396 4.1 6904 3.4 5612
C Hanoverhill TT Roxette-ET EX-94 2E GMD
10-0 3x 365d 35040 4.3 1518 3.0 1063
Life: 2104d 164789 4.1 6760 3.1 3587
Mil-R-Mor Roxette EX-90 EEEV GMD DOM
C Glenridge Citation Roxy EX-97 4E GMD

50

ARIZONA DAIRY CO
C/O JUSTIN STEWART
38401 W I-8
GILA BEND, AZ 85337
480-380-7955

DECEMBER, 2025 CALF

Born: December 1, 2025

Trent-Way-JS Rompen-Red-ET

3200914543 TP TC TY TV
PTA +780M -18F +7P 99R 12/25
PTA +1.92T +1.64UDC +1.37FLC 98R
GTPI +2630G

Kress-Hill Spicy-Red-ET

3223369465 Excellent-92 EEVEE @ 3-09
GTPI +2092G +2.65T +1.45UDC +1.54FLC
2-03 2x 305d 18500 4.5 829 3.3 611
• Res All-American R&W Winter Yearling 2022
• Jr All-American R&W Winter Yearling 2022
• Res Jr All-American R&W Sr 3-Yr-Old 2023
• HM Jr All-American Sr 3-Year-Old 2024
Sire: Altitude

Maternal sister:

Kress-Hill Sparkle-Red VG-87-2YR-CAN VVVE
• Res All-American R&W Fall Calf 2022
• HM All-Canadian Fall Calf 2022



KRESS-HILL SPICY-RED-ET EX-92

2nd thru 8th Dams

Ms Kress-Hil Sapphire-Red-ET EX-92 EEEEE 2E
2-05 2x 305d 28301 4.1 1167 2.9 821
• All-American R&W Fall Calf 2018
• Supremem Champion WDE Jr Show 2018
• Junior Champion International R&W Show 2018
• Res All-American Fall Yearling 2019
• Jr All-American Fall Yearling 2019
• Nom Jr All-American R&W Sr 2-Year-Old 2020
Siemers Destry Sunny-Red-ET EX-93 EEEEE 2E
3-08 2x 305d 32900 3.7 1232 3.3 1084
• 6x Junior All-American R&W Nominee
• HHM All-American R&W Produce of Dam 2018
• HM All-American R&W Produce of Dam 2020
Jerian Advent Sunny-Red-ET VG-85 VG-MS
• Res All-American R&W Winter Calf 2009
Jerian Rmrkr Saffron-Red-ET EX-91 EEEEE GMD
4-00 3x 365d 39590 3.2 1276 2.9 1132
3rd 4-Yr-Old Midwest Sprg/Nat R&W Show 2007
Jerian Milestone Sherry EX-94 4E GMD DOM *RC
Life: 4247d 413760 3.7 15379 3.0 13063
• All-Wisconsin 5-Year-Old 2000
Jerian Rookie Sunshine EX-94 3E GMD DOM
8-08 3x 365d 51870 3.7 1937 3.0 1555
Life: 2855d 280990 4.0 11200 3.2 9009
• Res All-Wisconsin 125,000 Lb Cow 1998
• All-Wisconsin Produce of Dam 1998
Berkshire-Valley Star Siss EX-93 5E GMD DOM
Life: 4230d 363730 3.8 13986 3.1 11098

51

CALEB STEVEN HAMM
N6767 US HIGHWAY 45
NEW LONDON, WI 54961
715-863-1142

HAMMS-HILL HAKAN LILY

3298025155 PO
Born: December 1, 2025
Winter Calf

Siemers Wolf Hakan-P-ET

3243347733 TR PC TE TC TY A2/A2
PTA +1027M +8F +30P 82R 12/25
PTA +2.45T +1.69UDC +1.48FLC 81R
GTPI +2889G

Bluff-Ridge Beemer Luna

322099653 Very Good-88 EVVVV
4-04 2x 333d 23390 4.0 932 3.5 811
3-03 2x 320d 20020 4.3 870 3.6 718

2nd thru 6th Dams

Bluff-Ridge Doorman Leana VG-86
Bluff-Ridge Clark Lacey VG-88 EEVVV
6-03 2x 365d 24800 3.7 912 3.2 806
Life: 2168d 135530 3.6 4939 3.2 4328
Bluff-Ridge Damion Lucky VG-86 VG-MS
3-02 2x 365d 23030 3.8 872 3.3 754
Bluff-Ridge O-Astr Lizzy EX-90 EEEVV
4-04 2x 365d 27750 4.0 1101 3.2 883
Life: 1814d 128300 3.8 4843 3.2 4139
Julie-B SR Meryl Lynne EX-91 EEEEE 2E
6-11 2x 333d 27420 3.7 1004 3.0 828
Life: 1559d 107220 3.8 4066 3.2 3379

52

RICHARD PIECHOWSKI
N1060 HIGHWAY 22
WAUPACA, WI 54981
715-258-2757

STACHERT SUPERTYPE FLAME

3284832121 RC
Born: September 12, 2024
Fall Yearling

Due: Oct. 12, 2026 to Townlineacre DL Lombardi-ET
250HO16490 GPTI +2710G +2.80T

NAF Supertype-ET

DEU 1604547041 RC TP TE TC TY TV TL A2/A2
PTA +91M +37F +18P 81R 12/24
PTA +2.98T +2.40UDC +1.43FLC 79R
GTPI +2441G

Stachert Flare-Red-TW

3260121705 Very Good-88 VG-MS @ 2-03
2-09 2x 184d 14390 4.1 583 3.7 527 RIP
Sire: Vogue Redeye P-Red

2nd thru 8th Dams

Stachert Amerca Flip Flop EX-91
2-02 2x 365d 20400 4.6 948 3.6 736
Stachert All For It Flicker VG-86
2-00 2x 306d 21940 4.3 954 3.2 694
Stachert Kieffer Flash VG-88 VVEVV
3-05 2x 347d 28160 3.5 981 3.1 873
Stachert Eclipse Flair VG-85 VG-MS RC
3-05 2x 333d 23130 3.5 812 3.2 735
Stachert Integrity Elegance VG-88 EX-MS
5-03 2x 351d 20680 4.3 888 3.0 618
Life: 2124d 139230 4.0 5520 3.0 4241
Ken-Gems Encore Fancy VG-86 VG-MS
6-01 2x 305d 23600 3.5 859 2.9 676
Inspiracres T-Cut Fay VG-87 EX-MS
4-04 2x 365d 33790 3.7 1240 2.7 902
Life: 1941d 141370 3.7 5185 2.8 3892

53

KAYLA STRAUSS
C/O MAR-LINDA-K HOLSTEINS LLC
W3811 HIGHWAY B
JOHNSON CREEK, WI 53038
920-253-9393

K-K-ROSE PERENNIAL SNOOPY

Registration Pending
Born: December 2, 2025
Winter Calf

Eclipse Perennial-ET

AUS 2096221 TE TL TV
PTA -706M -19F -16P 95R 12/25
PTA +3.08T +2.19UDC +1.12FLC 95R
GTPI +2307G

K-K-Rose Eye C So Perfect

3243110607 Good Plus-82 @ 2-03

3rd Dam

K-K-Rose U Something Special EX-91 EEVEE
2-11 2x 365d 35840 3.9 1386 3.3 1188

MB-Lucky-Lady Eye Candy-ET

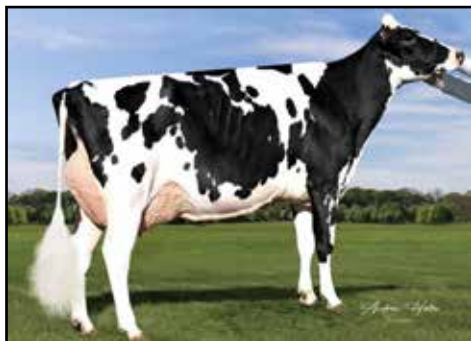
3234629820 TR TP TE TC TY TV TL A1/A2 BB
PTA -523M +0F +5P 96R 12/25
PTA +3.02T +2.09UDC +1.50FLC 96R GTPI +2596G
K-K-Rose Hanan Seniorita
3243110491 Good Plus-84 @ 3-08
3-02 2x 313d 29850 4.8 1441 3.4 1012
2-00 2x 365d 29440 4.7 1380 3.3 975

54

BOOTH HAVEN HOLSTEINS
N6839 COUNTY RD E
PLYMOUTH, WI 53073
920-980-9659

MIDWAY MAJOR (MARCH CALF)

Registration Pending
Born: March 4, 2026



SILDAHL-KH RISE-N-HSHINE EX-93 2E

Robella Major

CAN 4104450 TC TY TV TL TD
PTA +165M -2F -4P 86R 12/25
PTA +2.55T +1.53UDC +.66FLC 81R
GTPI +2355G

Sildahl-KH Rise-N-Shine

3143104615 Excellent-93 EEEEE 2E
4-10 2x 365d 34870 3.3 1143 3.0 1057
6-00 2x 365d 32800 3.4 1101 3.0 970
3-02 2x 365d 31350 3.2 991 3.0 938
2-01 2x 365d 26950 3.5 945 3.1 832
Life: 1713d 139030 3.3 4615 3.0 4218

2nd through 20th Dams:

Roylane-KH Tango Rass-ET EX-92 EEEEE 2E
4-06 2x 365d 29460 3.5 1044 3.0 892
Golden-Rose Raspberry-ET EX-91 EX-MS
2-02 2x 365d 25290 4.8 1216 3.7 934
Golden-Rose Atwood Ritzi EX-93 2E GMD
6-03 2x 3 05d 35670 4.1 1493 3.0 1058
Oakfield Pronto Ritzi EX-93 2E
3-01 2x 305d 31310 3.4 1058 3.1 959
Castleholm Dund Rhapsody-ET EX-90
2-01 2x 365d 28850 3.0 859 2.8 803
Astrahoe Stormatic Radiant EX-91 2E GMD
5-02 2x 365d 49847 4.2 2089 2.9 1437
Astrahoe LJ Rosa Rebel-ET EX-92 2E
7-02 2x 365d 48580 4.2 2021 3.0 1468
Pinehurst Royal Rosa-ET EX-91 2E
Pinehurst Roulade EX-92 EEEEE 2E
Pinehurst Sweet Cleo EX-90
Pinehurst Sweet Freedom EX-90 EX-MS
Pinehurst Sweet Delite EX-91 3E GMD
Pinehurst Rapture EX-96 4E GMD
Pinehurst Fragrance EX-90 2E
Hayssen Fond Ariel EX-90 2E
Hayssen D V Audrey EX-90 2E
Whirlhill Q Rag Apple Ariel EX-92
Arlite Posch EX-92 GMD
Audrey Posch EX-93 GMD

55

Two Units - Semen Grace Piechowski Scholarship Fund
Farnear Delta-Lambda-ET (sexed semen)
DONATED BY GRADY AUER, NEW LONDON, WI

56

Set of Bobcat Tires Waupaca-Waushara Juniors
DONATED BY SPIEGELBERG IMPLEMENT, WEYAUWEGA, W

57

Blackstone 28" Grill Waupaca-Waushara Juniors
DONATED BY GOLDEN HARVEST

58

Collector Toy Tractor Waupaca-Waushara Juniors
DONATED BY POMP'S TIRE

59

Stihl Chainsaw Waupaca-Waushara Juniors
DONATED BY RIESTERER & SCHNELL



**YOUR JOHN DEERE
DEALER**



Coming Through for You



RANDS.COM

FOR YOUR INFORMATION . . .

Embryo Packages: Embryos sold on a per embryo basis times the number of embryos offered in the package unless otherwise noted or announced. Shipping arrangements or pickup of the embryos, including all expenses, are the buyer's responsibility. No embryos will be released before payment is made.

Terms of Sales for ET Choices: 35% down due sale day; 65% upon selection at no later than 4 months of age based on age of youngest calf born. Seller entitled to \$5.00 per day board after 4 months, based on age of youngest calf born in the group from which selection is made. Seller to complete blood typing and pay all necessary registry and other applicable fees to obtain registry certificate.

Terms of Sale: Payment in full on sale day by cash or good check unless prior written arrangements have been made with the seller and/or sale management. For buyers not in attendance, full payment for purchases is due to the sale manager within 5 business days of the sale. No exceptions. Any special terms MUST have prior approval by seller or sale management. Partners reserve the right to bid on all partnership consignments. No animals will be released until payment is received. All payments to be made payable to: Waupaca-Waushara Holstein Association. Send payment to: Dan Peterson, E756 County Highway V, Scandinavia, WI 54977. Buyer is not responsible for illness or death until calf is struck off.

Announcements: Sale day announcements take precedence over printed material.

Accidents: The Waupaca-Waushara Holstein Association, consignors and owners of the grounds are not responsible for accidents.

WYAUWEGA
3rd GENERATION
STAR DAIRY
Wisconsin's Finest™

Voted Best Cheese Store
6 Years In a Row!

Best of Waupaca area 2021 2020 2019 2018 2017 2016

Cheese • Gifts • Beer & Liquor
Downtown Weyauwega

Cheese • String Cheese • Curds • Summer Sausage • Hot Sticks
Cheese Spreads • Cheese & Sausage Trays • Gift Boxes

109 N. Mill Street, Weyauwega, WI 54983
920-867-2870
Monday-Saturday 8a-5p, Sunday 9a-5p
www.stardairy.com

MADE TO ORDER

See us for all your party needs

131163

Rural Mutual Insurance Company

C&D Professional Insurance Services



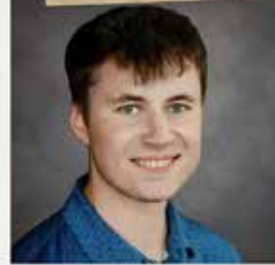
Sally Surprise



Jonathon Munoz



Dave Loken



Alex Sharp

**Premiums Paid Here, Stay Here
To Keep Wisconsin Strong.**

Waupaca

219 W Fulton St. Waupaca WI 54981
(715) 258-8830

Appleton

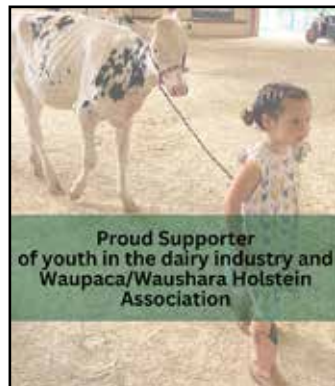
20095 S. Memorial Dr. Appleton WI 54915
(920) 759-5000



*Vita Plus brings a team approach
providing feed, nutrition
and management
expertise*



Vita Plus Loyal | 715.255.8666 | www.vitaplus.com



Proud Supporter
of youth in the dairy industry and
Waupaca/Waushara Holstein
Association

PREMIER
COMMUNITY BANK
Member FDIC

Contact us today for all
of your financial needs!

936 Furman Drive
Waupaca
715-256-9610

Visit us at one of our
11 Locations
or premiercommunity.com

Thank You to our Sponsors!

BULL SHIPPER
SEMEN SALES
CRAIG KROHLOW
920-639-5388
 W4203 SHADY RD., BLACK CREEK, WI 54106

MORNING BREEZE IBA



HUNTER STREBIG
 920-470-0853
 morningbreezeiba@gmail.com

- Fast the real chemical
- Rubber and alkylene infusions
- Service work
- Domestic locks, shovels, tools
- Agricul health supplies
- Hay and silage preservatives
- Custom, bus, hand equipment
- And much more!

Authorized Pioneer sales representative



Kraig Rosenow
 Rosenow Seed LLC
 N3314 Wisconsin Ave., Shawano, WI 54166
 Phone: 715-853-1267 / 715-526-2588
 Email: kraig.rosenow@plantpioneer.com



NOLAN SALES LLC
 1110 N Main St., Marion, WI 54950
(715) 754-5221 or (800) 472-0290
 Website: www.nolansales.com
 Auctions * Business Properties
 Recreation * Farms * Homes

Tom Nolan Marion (715) 754-2400 715-250-0925	Gerald "Sonny" Nolan Marion 715-754-5890 715-250-0935	Tim Nolan Marion 715-754-2211 715-853-8111
--	---	--

Country Visions Cooperative
 Country Store
 1104 Mulligan Dr.
 New London, WI 54961



Proud to support our next generation!

We are here to serve you locally and at various locations across Northeast and Central WI.

www.countryvisionscoop.com

Agronomy | Grain | Bulk Fuel | Propane | Convenience & Country Stores

Dupont Cheese Inc.

Fred Laack - President



Visit our website at
www.DupontCheeseInc.com



PO Box 96
 N10140 State Road 110
 Marion, WI 54950-0096

Phone: 800-895-2873
 Fax: 715-754-1313
 dupontcheese@yahoo.com



K&S Landscaping
Your Landscaping Specialists
 Located at 110 HWY G in Marion
(715) 851-4710
 401 E. Main St. • Bowler, WI 54416

FARMERS STATE BANK
 INVESTING IN YOU



MAIN OFFICE
 112 W. Fulton Street
 Waupaca, WI 54981
 Monday - Friday 8 am to 5 pm

Phone 715.258.1400
 Fax 715.258.1414
 banking@fsbwaupaca.com
 www.fsbwaupaca.com



Clintonville Elevator Co.
 715-823-3610



SEMEX
 CELEBRATING
50 YEARS
 1974-2024

DAN AMBORT
 Progressive Core Account
 Representative
 608-547-6093
 dambort@semex.com

Central Wisconsin's Source for High Quality Hoof Care



Contact:

Dan Weidner

920-728-5555

Candy Land Ranch

Offering Show Calves to Juniors

- * Vision: Breeding and raising dairy show heifers
- * Focus on buying and implanting embryos from deep pedigree cow families



Owned & Operated by:

Dan Weidner (920) 728-5555

C/O: Candice Wolosek (715) 451-1707

candice.wolosek@gmail.com

39th Annual

WAUPACA-WAUSHARA

Show Opportunity Sale

ARIZONA DAIRY CO, GILA BEND, AZ	50	MINGLEWOOD, INC, DEER PARK, WI	44
BETLEY, JACOB & CLAIRE, PULASKI, WI	26	NEHLS, KAMPHUIS & FLIER, HUSTISFORD, WI	10
BRANTMEIER, JEFF, HILBERT, WI	17	NEHLS, SHAWN & SETH, HUSTISFORD, WI	18
BOOTH-HAVEN HOLSTEINS, PLYMOUTH, WI	32, 54	NICKELS & BUSKE, WATERTOWN, WI	5
BREITLOW, GARY, ALGOMA, WI	28	OLSON, CALEB & JOSIAH, LENA, WI	16
BUTTLES, ANDREW & LYNETTE, LANCASTER, WI	12	OLSON, ZACHARY, KEWASKUM, WI	20
COFFEEN & POLLACK, DE PERE, WI	8	PIECHOWSKI, RICHARD, WAUPACA, WI	52
COW CREW GENETICS, BRANDON, WI	27	PRICKETTE, PAYTON & JAVEN, CLINTONVILLE, WI	34
DONE, ERYL, GEORGETOWN, ON	7	ROYAL VISTA HOLSTEINS, PICKETT, WI	13
DORSHORST, SARA, WYATT & CLAIRE, MARSHFIELD, WI	23	RYAN, DYLAN & CAMERON, FOND DU LAC, WI	37
DORSHORST, JOHN, JUNCTION CITY, WI	24	SATTLER, JAMES, POY SIPPI, WI	46
ENDRES, JOSEPH, SAUK CITY, WI	2	SCHMIDT, AUSTEN & JAMES, CASCADE, WI	14
GIESE, WAYNE & SAMANTHA, EDGAR, WI	15	SCHUH, JOSEPH, SEYMOUR, WI	31
GRINSTEAD & BOYKE, FOND DU LAC, WI	11	SCHULTZ, WILLIAM III, WALDO, WI	19
GUNST, CATHRYN & CHRIS, PINE RIVER, WI	43	SELDON WOOD LLC, BLOOMER, WI	38
HAMM, CALEB, NEW LONDON, WI	51	SMITH, TIM, PULASKI, WI	25
HAMMERTIME HOLSTEINS, POYNETTE, WI	40	SONNENBURG, RYAN, BELLEVILLE, WI	30
HAUPT, ERIC, MANITOWOC, WI	45	STEFFENHAGEN, NIKKI, KENOSHA, WI	49
HINTZ, JUSTIN & KOTTI	3	STRAUSS, KAYLA, JOHNSON CREEK, WI	53
HOGGE, DYMENTHOLM & WADELAND, OGDEN, UT	4	STUMPF, EMILY, APPLETON, WI	42
KAMPHUIS FARMS LLC, BRANDON, WI	36	SYNERGY FARM LLC, PULASKI, WI	29
KRESS & GIESE, NEWTON, WI	35	ULNESS, MARK & ANGIE, VALDERS, WI	48
KROHLOW, SCHULTZ & PREDER, BLACK CREEK, WI	1	VANDOSKE, BRIANNE, BROOKLYN & REID, CLEVELAND, WI	41
KRUSCHKE, JAKE, NEW RICHMOND, WI	39	WALLACE & SMITH, STOUGHTON, WI	22
LUEDTKE, KRISTA, HORTONVILLE, WI	33	WEIDNER, DANIEL, PLOVER, WI	9
MAR-LINDA-K HOLSTEINS LLC, JOHNSON CREEK, WI	47	WIESE & BRANTMEIER, SHERWOOD, WI	6
MILK SOURCE LLC, KAUKAUNA, WI	21		



A TRUE SCOTTISH
GOLF HERITAGE

Tanner Berkholtz
Christy Berkholtz

Owners

GolfGlenCairn.com
920.244.GOLF

Circa 1990



David Strebe
Dairy Nutritionist



W249 Deer Drive
Pulaski, WI 54162

Office: 920-822-8881
Mobile: 920-250-1779
Fax: 920-822-1023
dave@nutritionservice.com

nutritionservice.com

OLMSTED'S
BIG FALLS FEED MILL

130 N Main St
Big Falls, WI 54926
715-754-5362
olmstedbigfallsmill@gmail.com
TUESDAY-FRIDAY 9-4:30

Follow Our Facebook Page For Saturday Hours



Spiegelberg Implement, Inc.

COMPLETE CONCRETE WORK
SALES & SERVICE



RECIPIENT OF A 2008 CONCRETE
DESIGN AWARD FOR
CENTRAL SANDS DAIRY

COMPLETE CONCRETE WORK



STAHL BROS.
LUXEMBURG, WI

Spiegelberg Implement will take care of *all* your project needs!

Project Design, Complete Concrete Work, Equipment Sales, and Installation

Freestalls, Headlocks, Gates, Fans, Curtains, Mattresses, Grooved Belting, Etc.

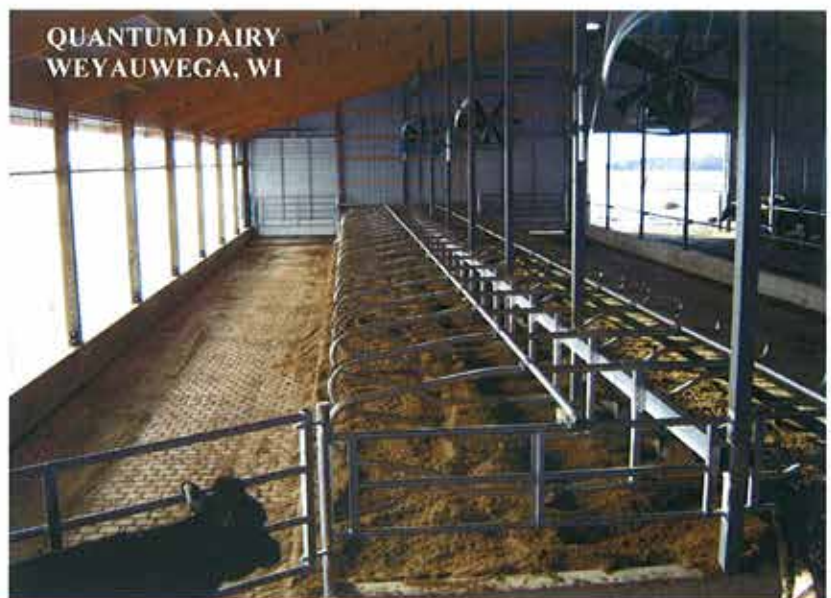
Norbco, Kuhn/Knight, Bobcat, Balzer, Patz, N-Tech, Badger, Mira Fount, Ritchie, Agromatic / Kraiburg

- *Freestall Barns & Parlors*
- *Young Stock & Calf Facilities*
- *Manure Pits & Bunkers*



OUR *SPIEGROLL* GROOVED FLOORS

ROSY-LANE HOLSTEINS
WATERTOWN, WI



QUANTUM DAIRY
WEYAUWEGA, WI

FOR A JOB DONE RIGHT... CONTACT SCOTT SPIEGELBERG

920.596.2610 (Office) - OR - 920.538.0642 (Cell)

E5750 Highway 54 - Weyauwega, WI 54983

www.spiegelbergimplement.com