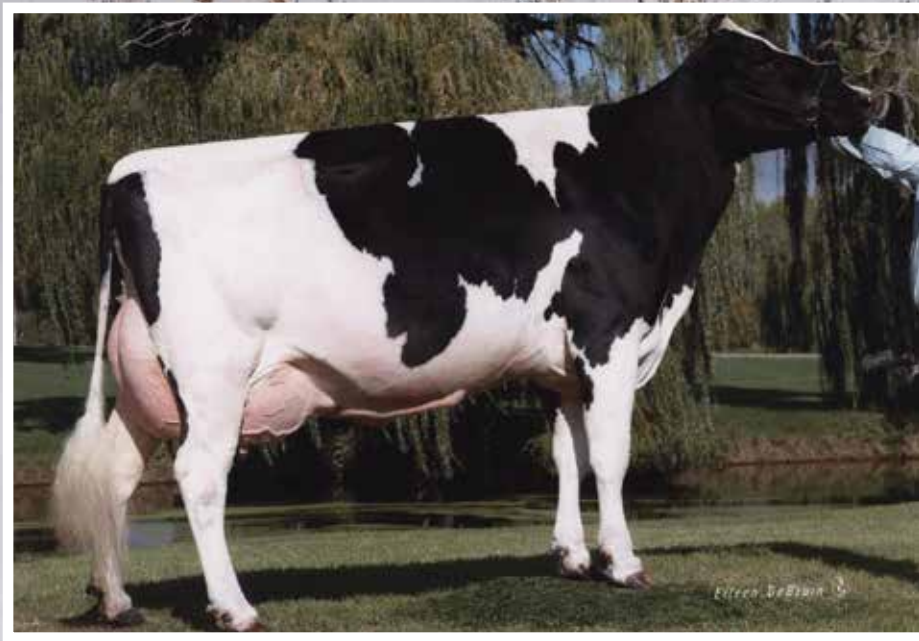


# Z EHRVIEW

## FARM

# COMPLETE DISPERSAL



*Zehrview Bango Rose EX-94,4E  
Lifetime 235230M 7704F 6835P*

**Friday, June 5, 2026 ~ 11:00 AM**  
**Graymont, IL**

For sixty years the Holstein cow has been the life and love of the Zehr family. When Donald purchased his first registered Holstein in 1958, he would have never imagined the places this beautiful breed would take us. The herd has always been a beloved part of our family and we are incredibly proud of all our “daughters” who went on to gain success and recognition state and nationwide. Throughout these many years, over 140 of our cows have been classified as Excellent. Our storage cabinets overflow with trophies, plaques and ribbons from several cows selected as champions at the Illinois State Show, Illinois State Fair, North American International Livestock Exposition, Canadian Royal, and the World Dairy Expo. Our cows have been sources of great pride and joy!

While we are grateful for the success of our herd, we have discovered that the greatest gift the cows gave us did not come from a ribbon, plaque, or trophy— it was all the Dairy friends and relationships we have made along the way. The cattle industry has brought us some of the best people and friends we could ever had hoped for. Every show felt like a family reunion. Like any family, we would share stories and jokes, tease each other, solve the world’s problems, and celebrate each other’s successes. We enjoyed watching our families grow up together as other generations would share in our love for the dairy cow. Our work would also not be possible without the hard work and skill of fellow breeding partners, hoof trimmers, and cattle fitters who represent the very best in their craft. We are also grateful for our local friends and the Graymont community who have been tremendous sources of support these many years. While our cows have come and gone throughout the years, these friendships are forever. We thank you all for sharing this part of our journey and we look forward to continuing these friendships in years to come! We love you all!

According to the book of Ecclesiastes, “For everything there is a season and a time for every purpose under heaven.” While the cows have been a constant in our lives the past 60 years, we have known several seasons of challenge and change. In February 1994, our farm was hit with a major fire which completely destroyed our big barn and milk house. While this event was devastating to our family, we found new strength and support from our neighbors and dairy community. From the ashes of that fire, we emerged with a renewed faith. That very faith has sustained our family into this new season for Zehrview. We thank you all for your prayers and support this year. The cows will always be in our hearts, and we know that they will have a bright future. We want to say a special thank you to all of our buyers and business partners. We are grateful for your support and wish you the best in your purchases!

The Zehr Family

# Zehrview Farm

Registered Holsteins Complete Dispersal

Friday, June 5, 2026 - 11:00 AM, Graymont, Illinois

(GPS address: 8722 East 1900 North, Graymont, IL 61743)

DHI Herd Code 33-51-0940

*Note: Cattle Viewing and open house with refreshments on Thursday from 3:00 to 7:00 PM*

## Sales Staff

Scott Courtney..... 563-380-1318  
Paul Trapp.....715-896-7062  
Brian Obrich..... 815-426-7426  
Ron Roskopf.....414-587-4402  
Tracy Schaefer..... 320-360-5188  
Aaron Heinzmann..... 618-781-7994  
Lucas Clanton..... 618-322-3523  
Ben Wallace..... 608-931-9832  
Dave Schmocker..... 920-723-1557  
Ed Smith..... 847-372-0602  
Darren Ropp.....815-848-3424  
Pat Conroy..... 260-402-4494  
Graisson Schmidt..... 608-797-2855  
Kevin Philips..... 254-485-9999  
Luke Benjamin..... 708-738-3895

Sale Clerk: Amy Courtney 563-380-4571



*View/bid online in Real Time  
at [www.cowbuyer.com](http://www.cowbuyer.com)*

\*Bidders must pre-register & be pre-approved.

\*Contact Aaron Tompkins if you need  
assistance at 336-363-4639

## Fitting Crew

Jason Fremstad.....608-606-9337  
Dustin Kirkpatrick..... 817-240-1299  
Dylan Reed..... 217-254-5397  
Dillion Sparrgrove..... 563-412-8200  
Wyatt Zehr..... 815-842-7377  
Danny Zehr..... 815-674-2799

**Terms of Sale:** Cash or good check sale day

**Herd Health:** Herd is in great health and fully vaccinated. Long distance trucking available.

Herd Owner:

Sale Managed By:

## Zehrview Holsteins

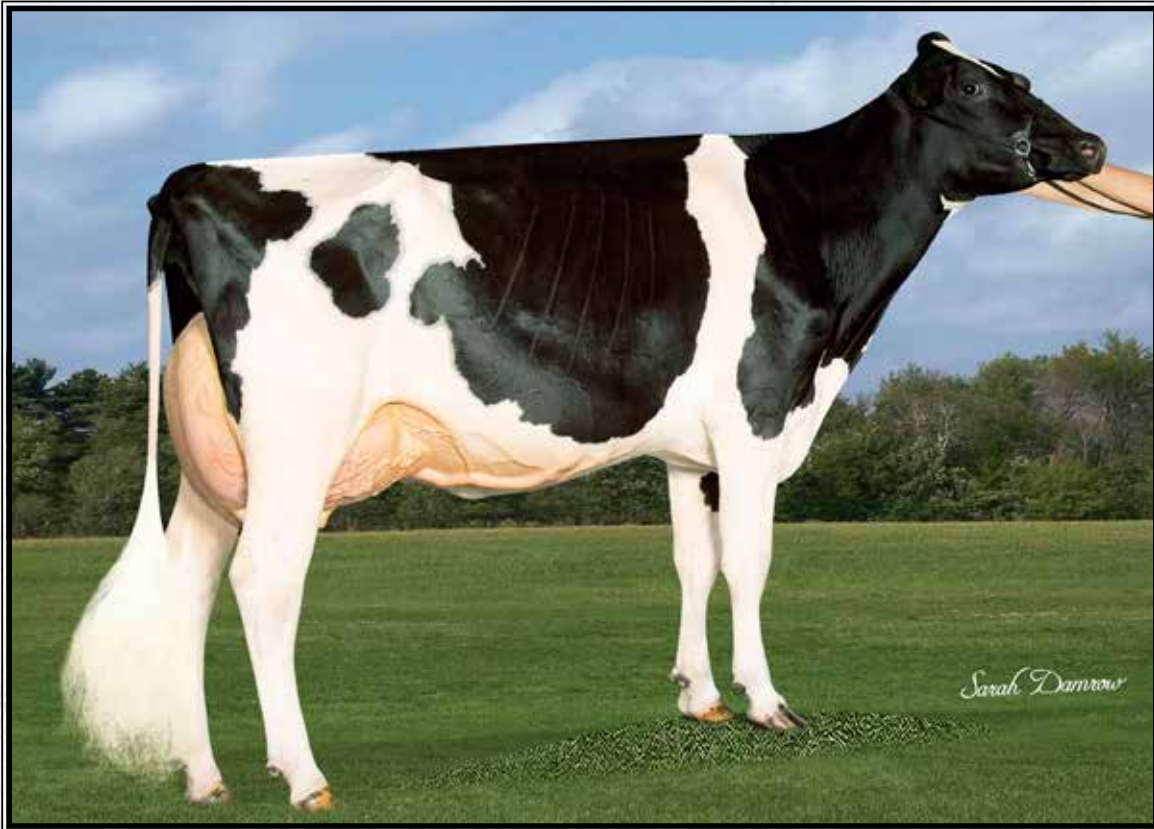
8722 East 1900 North  
Graymont, Illinois 61743  
Lynn Zehr 815-674-9645  
Gary Zehr 815-252-7805  
Rose Zehr 815-842-7736

# Courtney

## SALES LLC



2564 Pole Line Rd., Ridgeway, IA 52165  
Scott: 563-380-1318 | Amy: 563-380-4571  
Office: 563-387-0035  
Fax: 563-387-0046  
Email: [courtneysalesllc@gmail.com](mailto:courtneysalesllc@gmail.com)



### Zehrview Master Flash EX-92 EEVEE

*\*Reserve Intermediate Champion M-E Fall National 2025*  
(She sells as Lot 1 and same family as Lots 1-5)

## LOT 1

### Zehrview Master Flash

3-10 EX-92 EEVEE

3225051966 99%RHA-I

Born 6/9/22

1-11 316 19186 4.0 777 3.3 632

2-11 323 22249 4.2 929 3.4 762

**\*DRY COW\***

Bred 10/16/25, Due 7/28/26 to

799HO63 Detective (sexed)

#### Lot 1's winnings include:

2023 –

*\*1st Jr/2nd Open Summer Yearling IL State Fair*

*\*Jr Champion & Jr Champion Land of Lincoln Jr Show*

*\*Supreme Land of Lincoln heifer of the Jr Show*

2024 –

*\*2nd Summer Jr 2 Open IL State Fair*

*\*2nd Jr 2yr-old M-E Fall Nat'l*

2025 –

*\*1st Jr/Open Jr 3yr-old IL State Fair*

*\*Grand Champion of Jr & Open Show IL State Fair*

*\*Int. Champion Open IL State Fair*

*\*Supreme of the Jr Show*

*\*Supreme Land of Lincoln*

#### Golden-Oaks Master-ET

3139216917 4/26 PTA +1986GTPI

+2.96T +1.93UDC +1.11FLC 98%R

Avalanche X EX-90 Doorman

#### Zehrview Diamondback Fancy

4-05 EX-93 EEEEE 3144607436

2-00 326 17629 4.0 711 3.0 531

2-11 365 22360 4.2 938 3.3 740

4-03 365 23048 3.9 906 3.3 762

Sire: Mr D Apple Diamondback\*RC

**\*She sells as Lot 2**

#### 2nd Dam:

Holbric Integral Freakish  
EX-90,3E EEEEE

2-11 365 25187 3.9 969 3.3 832

4-05 365 26820 3.4 900 3.1 832

6-05 365 22168 3.2 708 3.2 718

7-10 365 30143 3.9 1183 3.2 974

Life-to-date 117667 3.7 4355 3.3 3846

**\*She sells as Lot 3**

#### 3rd Dam:

Holbric Goldsun Freaky

VG-85 VVV++

3-06 351 23910 3.8 915 3.4 820

#### 4th Dam:

Holbric Minister Franny

EX-91 EEEVE

4-07 365 32890 3.9 1293 3.1 1029

Lifetime 104420 3.9 4023 3.3 3406

#### 5th Dam: Holbric Genius Fiona

EX-90 EVVVE

2-11 365 38500 4.1 1587 3.1 1193

4-04 365 33030 3.6 1173 3.3 1078

Lifetime 116960 3.8 4474 3.2 3730

#### 6th Dam: Mayers-K Aaron Flicka-ET

VG-88 VEVVV

3-07 365 39080 3.9 1513 3.1 1217

Lifetime 117640 3.8 4429 3.2 3722

#### 7th Dam: Twin-B-Dairy E-B Felize-ET

EX-92,2E EEEEE GMD-DOM

7-10 365 38360 4.2 1593 3.0 1162

Lifetime 168340 3.9 6617 3.2 5353

#### 8th Dam: Rocky-Vu Blks Ebony Elly-ET

VG-88 VVEEE GMD-DOM

2-02 365 32210 4.1 1335 3.2 1043

#### 9th Dam: Rocky-Vu Rotat Extasy Ebony

EX-94 EEEE GMD-DOM

3-02 365 43982 4.2 1857 3.3 1460

Lifetime 106951 4.2 4520 3.2 3472

#### 10th Dam: Rocky-Vu Mars Esthe Extasy

VG-87 +VEE GMD-DOM

6-00 365 33510 3.9 1305 3.3 1096

Lifetime 116944 3.6 4188 3.3 3846



**Zehrview Master Flash EX-92 EEUEE**

*\*Reserve Intermediate Champion M-E Fall National 2025  
(She sells as Lot 1 and same family as Lots 1-5)*

**LOT 2**

**Zehrview Diamondback Fancy**

**4-05 EX-93 EEEEE**  
3144607436 99%RHA-I  
Born 6/8/20  
2-00 326 17629 4.0 711 3.0 531  
2-11 365 22360 4.2 938 3.3 740  
4-03 365 23048 3.9 906 3.3 762  
5-08 42 3191 4.6 148 3.1 98 RIP  
Last test- 66 lbs 3.8%F 2.7%P  
SCC 41,000  
**Fresh 2/25/26**  
**Bred 5/16/26 to 799HO16 Master**

**Mr D Apple Diamondback\*RC**  
3013721049 4/26 PTA +1954GTPI  
+1.77T +.96UDC +1.21FLC 99%R  
Doorman X EX-94,2E Talent

**Holbric Integral Freakish**  
**10-04 EX-90,3E EEEEE** 3126918476  
2-11 365 25187 3.9 969 3.3 832  
4-05 365 26820 3.4 900 3.1 832  
6-05 365 22168 3.2 708 3.2 718  
7-10 365 30143 3.9 1183 3.2 974  
Life-to-date 117667 3.7 4355 3.3 3846  
Sire: Blondin Integral-ET  
**\*She sells as Lot 3**

**Daughter of Lot 2:**  
**Zehrview Master Flash**  
**EX-92 EEVEE**  
*\*2nd Jr 2yr-old M-E Fall Nat'l 2024*  
*\*1st Jr 3 & Grand Champion of Jr & Open Show IL State Fair 2025*  
**(Pictured above & she sells as Lot 1)**

**2nd Dam:**  
**Holbric Goldsun Freaky**  
**VG-85 VVV++**  
2-04 305 21220 3.0 628 3.2 684  
3-06 351 23910 3.8 915 3.4 820  
**3rd Dam:**  
**Holbric Minister Franny**  
**EX-91 EEEVE**  
4-07 365 32890 3.9 1293 3.1 1029  
Lifetime 104420 3.9 4023 3.3 3406  
**4th Dam:**  
**Holbric Genius Fiona**  
**EX-90 EVVVE**  
2-11 365 38500 4.1 1587 3.1 1193  
4-04 365 33030 3.6 1173 3.3 1078  
Lifetime 116960 3.8 4474 3.2 3730  
**5th Dam:**  
**Mayers-K Aaron Flicka-ET**  
**VG-88 VEVVV**  
3-07 365 39080 3.9 1513 3.1 1217  
Lifetime 117640 3.8 4429 3.2 3722  
**6th Dam:**  
**Twin-B-Dairy E-B Felisse-ET**  
**EX-92,2E EEEEE GMD-DOM**  
7-10 365 38360 4.2 1593 3.0 1162  
Lifetime 168340 3.9 6617 3.2 5353  
**7th Dam:**  
**Rocky-Vu Blks Ebony Elly-ET**  
**VG-88 VVEEE GMD-DOM**  
2-02 365 32210 4.1 1335 3.2 1043  
**8th Dam:**  
**Rocky-Vu Rotat Extasy Ebony**  
**EX-94 EEEE GMD-DOM**  
3-02 365 43982 4.2 1857 3.3 1460  
Lifetime 106951 4.2 4520 3.2 3472  
**9th Dam:**  
**Rocky-Vu Mars Esthe Extasy**  
**VG-87 +VEE GMD-DOM**  
6-00 365 33510 3.9 1305 3.3 1096  
Lifetime 116944 3.6 4188 3.3 3846

# LOT 3

## Holbric Integral Freakish

10-04 EX-90,3E EEEEE

3126918476 100%RHA-NA

Born 12/12/15

2-11 365 25187 3.9 969 3.3 832

4-05 365 26820 3.4 900 3.1 832

6-05 365 22168 3.2 708 3.2 718

7-10 365 30143 3.9 1183 3.2 974

10-02 37 1574 4.4 70 2.4 38 RIP

Life-to-date 117667 3.7 4355 3.3 3846

Fresh 3/2/26

Bred 5/11/26 to

138HO7450 Army-RED

### Blondin Integral-ET

108109390C 4/26 PTA +2115GTPI

+1.14T +1.24UDC +.90FLC 98%R

Sympatico X EX-94 Shottle

### Holbric Goldsun Freaky

2-08 VG-85 VVV++ 3013232522

2-04 305 21220 3.0 628 3.2 684

3-06 351 23910 3.8 915 3.4 820

Sire: Toc-Farm Goldsun-ET

### 2nd Dam:

Holbric Minister Franny

EX-91 EEEVE

2-03 315 21000 4.1 868 3.3 692

3-02 365 22890 3.8 872 3.3 760

4-07 365 32890 3.9 1293 3.1 1029

6-00 226 23730 3.5 839 2.7 648

Lifetime 104420 3.9 4023 3.3 3406

### 3rd Dam:

Holbric Genius Fiona

EX-90 EVVVE

2-11 365 38500 4.1 1587 3.1 1193

4-04 365 33030 3.6 1173 3.3 1078

Lifetime 116960 3.8 4474 3.2 3730

### 4th Dam:

Mayers-K Aaron Flicka-ET

VG-88 VEVVV

3-07 365 39080 3.9 1513 3.1 1217

Lifetime 117640 3.8 4429 3.2 3722

### 5th Dam:

Twin-B-Dairy E-B Felisse-ET

EX-92,2E EEEEE GMD-DOM

7-10 365 38360 4.2 1593 3.0 1162

Lifetime 168340 3.9 6617 3.2 5353

### 6th Dam:

Rocky-Vu Blks Ebony Elly-ET

VG-88 VVEEE GMD-DOM

2-02 365 32210 4.1 1335 3.2 1043

### 7th Dam:

Rocky-Vu Rotat Extasy Ebony

EX-94 EEEE GMD-DOM

3-02 365 43982 4.2 1857 3.3 1460

Lifetime 106951 4.2 4520 3.2 3472

### 8th Dam:

Rocky-Vu Mars Esthe Extasy

VG-87 +VEE GMD-DOM

6-00 365 33510 3.9 1305 3.3 1096

Lifetime 116944 3.6 4188 3.3 3846

### 2nd Dam:

Holbric Goldsun Freaky

VG-85 VVV++

2-04 305 21220 3.0 628 3.2 684

3-06 351 23910 3.8 915 3.4 820

### 3rd Dam:

Holbric Minister Franny

EX-91 EEEVE

4-07 365 32890 3.9 1293 3.1 1029

Lifetime 104420 3.9 4023 3.3 3406

### 4th Dam:

Holbric Genius Fiona

EX-90 EVVVE

2-11 365 38500 4.1 1587 3.1 1193

4-04 365 33030 3.6 1173 3.3 1078

Lifetime 116960 3.8 4474 3.2 3730

### 5th Dam:

Mayers-K Aaron Flicka-ET

VG-88 VEVVV

3-07 365 39080 3.9 1513 3.1 1217

Lifetime 117640 3.8 4429 3.2 3722

### 6th Dam:

Twin-B-Dairy E-B Felisse-ET

EX-92,2E EEEEE GMD-DOM

7-10 365 38360 4.2 1593 3.0 1162

Lifetime 168340 3.9 6617 3.2 5353

### 7th Dam:

Rocky-Vu Blks Ebony Elly-ET

VG-88 VVEEE GMD-DOM

2-02 365 32210 4.1 1335 3.2 1043

### 8th Dam:

Rocky-Vu Rotat Extasy Ebony

EX-94 EEEE GMD-DOM

3-02 365 43982 4.2 1857 3.3 1460

Lifetime 106951 4.2 4520 3.2 3472

### 9th Dam:

Rocky-Vu Mars Esthe Extasy

VG-87 +VEE GMD-DOM

6-00 365 33510 3.9 1305 3.3 1096

Lifetime 116944 3.6 4188 3.3 3846

# LOT 4

## Zehrview Famous Fashion

3287558454 99%RHA-I

Born 3/2/26

Sire: Zehrview T-Storm Famous

3263438690 (Thunder Storm X

EX-93 Diamondback- sells as Lot 2)

Dam: Freakish (Sells as Lot 3)

# LOT 5

## Zehrview Premier Fairy

3-07 GP-82 +++G+

3225051968 100%RHA-NA

Born 9/4/22

3-03 100 7097 2.8 197 2.8 200 RIP

Last test- 75 lbs 3.1%F 2.7%P

SCC 13,000

Fresh 12/29/25

Bred 3/3/26 to 799HO051 Destination

### Lawn-View Pollys Premier-ET

1797691 4/26 PTA +393TPI

Ivanhoe X EX-96,4E Arlinda Chief

### Holbric Integral Freakish

10-04 EX-90,3E EEEEE 3126918476

2-11 365 25187 3.9 969 3.3 832

4-05 365 26820 3.4 900 3.1 832

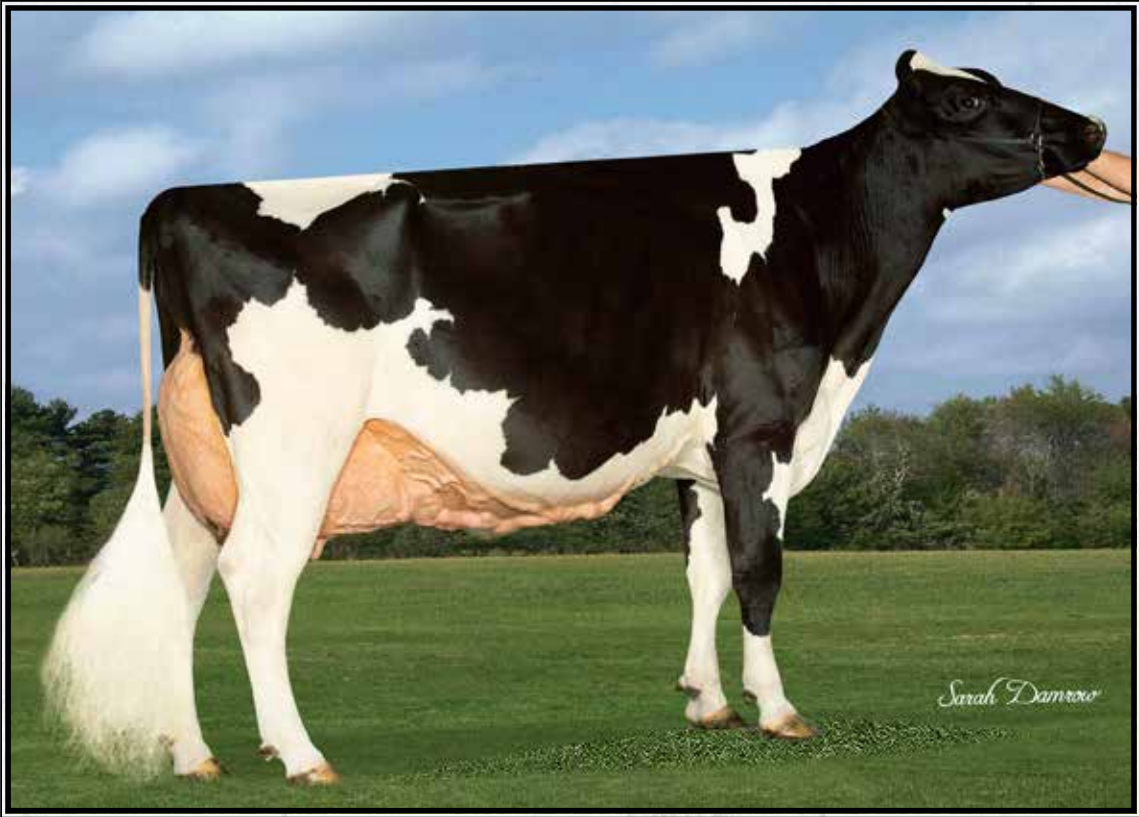
6-05 365 22168 3.2 708 3.2 718

7-10 365 30143 3.9 1183 3.2 974

Life-to-date 117667 3.7 4355 3.3 3846

Sire: Blondin Integral-ET

\*She sells as Lot 3



**Zehrview Peaches Cream\*RC EX-94,3E EEEEE**

*\*1st 125,000 lb Cow & HM Sr. Champion IL State Fair 2024!  
(She sells as Lot 6 and same family as Lots 7-12)*

**LOT 6**

**Zehrview Peaches Cream\*RC**

**10-02 EX-94,3E EEEEE**

3127419719 100%RHA-NA

Born 9/5/14

2-06 365 24119 3.9 945 3.2 759

3-08 365 22030 4.1 910 3.3 729

5-03 365 21346 4.1 868 3.1 656

7-00 360 14525 4.4 635 3.5 506

8-01 365 22169 4.8 1073 3.3 726

9-03 365 26347 4.2 1108 2.9 751

11-00 211 12195 4.1 495 3.2 395 RIP

Life-to-date 158471 4.3 6720 3.2 5116

**Fresh 9/9/25**

**Bred 3/28/26 to**

**138HO7450 Army-RED**

*\*1st 125,000 lb Cow & HM Sr. Champion IL State Fair 2024!*

**Hylite Barbwire-RED-ET**

8748330C 4/26 PTA +1525GTPI

+ .63T +.54FLC 99%R

Shaquille X EX-95 All-Am Talent

**Zehrview Atwood Peaches**

**9-02 EX-94,3E EEEEE 141000666**

2-08 305 18770 3.6 675 3.0 563

4-02 305 22160 3.4 749 3.1 689

7-02 305 21660 3.9 850 3.1 672

8-04 305 24170 4.1 982 2.8 670

Lifetime 142170 3.8 5451 3.2 4489

Sire: Maple-Downs-I G W Atwood-ET

**2nd Dam:**

**Zehrview Spirte Petty**

**EX-90,2E EEVVE**

2-03 305 16470 3.6 595 3.0 496

3-06 305 17180 3.9 678 3.2 553

4-11 305 19200 3.8 736 2.9 554

**3rd Dam:**

**Zehrview Bango Pretty**

**EX-90,2E EEVVE**

6-03 305 21640 3.8 825 3.1 676

**4th Dam:**

**Zehrview Skybuck Penny**

**EX-90,2E EEVVE**

6-07 305 24460 4.0 969 3.2 776

Lifetime 143130 4.2 5957 3.4 4901

**5th Dam:**

**Zehrview Lindy Pink-TW**

**VG-86 +VVVV**

2-02 365 24230 3.3 807 3.0 735

# LOT 7

## Zehrview Army Cactus-RED

4-07 VG-88 EV+VV

3225051951 99%RHA-I

Born 9/6/21

2-06 365 18208 4.1 743 3.2 574

4-05 61 5700 4.1 231 2.6 151 RIP

Last test- 87 lbs 4.1%F 2.6%P

SCC 57,000

Fresh 2/6/26

Bred 4/29/26 to

799HO127 Hurricane (sexed)

## Golden-Oaks Srg Army-RED-ET

3139216953 4/26 PTA +1961GTPI

+2.25T +1.55UDC +1.09FLC 83%R

Surge X EX-92,2E Destry

## Zehrview Peaches Cream

10-02 EX-94,3E EEEEE 3127419719

2-06 365 24119 3.9 945 3.2 759

3-08 365 22030 4.1 910 3.3 729

5-03 365 21346 4.1 868 3.1 656

7-00 360 14525 4.4 635 3.5 506

8-01 365 22169 4.8 1073 3.3 726

9-03 365 26347 4.2 1108 2.9 751

11-00 211 12195 4.1 495 3.2 395 RIP

Life-to-date 158471 4.3 6720 3.2 5116

Sire: Hylite Barbwire-RED-ET

\*Pictured w/ and sells as Lot 6

*\*1st 125,000 lb Cow & HM Sr. Champion IL State Fair 2024!*

## 2nd Dam:

### Zehrview Atwood Peaches

EX-94,3E EEEEE

2-08 305 18770 3.6 675 3.0 563

4-02 305 22160 3.4 749 3.1 689

7-02 305 21660 3.9 850 3.1 672

8-04 305 24170 4.1 982 2.8 670

Lifetime 142170 3.8 5451 3.2 4489

## 3rd Dam:

### Zehrview Spirte Petty

EX-90,2E EEVVE

4-11 305 19200 3.8 736 2.9 554

## 4th Dam:

### Zehrview Bango Pretty

EX-90,2E EEVVE

6-03 305 21640 3.8 825 3.1 676

## 5th Dam:

### Zehrview Skybuck Penny

EX-90,2E EEVVE

6-07 305 24460 4.0 969 3.2 776

Lifetime 143130 4.2 5957 3.4 4901

## 6th Dam:

### Zehrview Lindy Pink-TW

VG-86 +VVVV

2-02 365 24230 3.3 807 3.0 735

# LOT 8

## Zehrview King Doc Cutie\*RC

3263438699 99%RHA-I

Born 3/6/24

Fresh 5/15/26

## Woodcrest King Doc

3132417775 4/26 PTA +2834GTPI

+992M +27F +29P +1.0PL

+2.38T +1.13UDC +1.60FLC 99%R

Kingboy X VG-88 Mack

## Zehrview Army Cactus-RED

4-07 VG-88 EV+VV 3225051951

2-06 365 18208 4.1 743 3.2 574

4-05 61 5700 4.1 231 2.6 151 RIP

Last test- 87 lbs 4.1%F 2.6%P

Sire: Golden-Oaks Srg Army-RED-ET

\*She sells as Lot 7

## 2nd Dam:

### Zehrview Peaches Cream

EX-94,3E EEEEE

2-06 365 24119 3.9 945 3.2 759

3-08 365 22030 4.1 910 3.3 729

5-03 365 21346 4.1 868 3.1 656

7-00 360 14525 4.4 635 3.5 506

8-01 365 22169 4.8 1073 3.3 726

9-03 365 26347 4.2 1108 2.9 751

LTD 158471 4.3 6720 3.2 5116

\*Pictured w/ and sells as Lot 6

*\*1st 125,000 lb Cow & HM Sr. Champion IL State Fair 2024!*

## 3rd Dam:

### Zehrview Atwood Peaches

EX-94,3E EEEEE

4-02 305 22160 3.4 749 3.1 689

8-04 305 24170 4.1 982 2.8 670

Lifetime 142170 3.8 5451 3.2 4489

## 4th Dam:

### Zehrview Spirte Petty

EX-90,2E EEVVE

4-11 305 19200 3.8 736 2.9 554

## 5th Dam:

### Zehrview Bango Pretty

EX-90,2E EEVVE

6-03 305 21640 3.8 825 3.1 676

## 6th Dam:

### Zehrview Skybuck Penny

EX-90,2E EEVVE

6-07 305 24460 4.0 969 3.2 776

Lifetime 143130 4.2 5957 3.4 4901

## 7th Dam:

### Zehrview Lindy Pink-TW

VG-86 +VVVV

2-02 365 24230 3.3 807 3.0 735

# LOT 9

## Zehrview Fireball Candy

\*Reg. pending

Born 5/15/26

**Sire:** Zehrview Unix Fireball

32875558421

(Unix X EX-92 Master- sells as Lot 1)

**Dam:** Doc Cutie (Sells as Lot 8)

## LOT 10

### Zehrview D-Back Panama

6-01 EX-90 VVEEE

3144607434 99%RHA-I

Born 3/3/20

2-06 365 21866 3.4 753 3.2 695

4-06 365 13707 4.2 569 3.4 470

5-11 37 2999 3.8 115 2.5 74 RIP

Last test- 85 lbs 3.9%F 2.6%P

SCC 162,000

Fresh 3/2/26

Bred 5/11/26 to

138HO7450 Army-RED

### Mr D Apple Diamondback\*RC

3013721049 4/26 PTA +1954GTPI

+1.77T +.96UDC +1.21FLC 99%R

Doorman X EX-94,2E Talent

### Zehrview Absolute Paris\*RC

3-08 VG-87 VVV+V 3133091906

2-05 305 17640 3.5 621 3.2 567

Sire: Apples Absolute-RED

### Maternal sister:

### Zehrview Peaches Cream

EX-94,3E EEEEE

9-03 365 26347 4.2 1108 2.9 751

Life-to-date 158471 4.3 6720 3.2 5116

\*Pictured w/ and sells as Lot 6

*\*1st 125,000 lb Cow & HM Sr. Champion IL State Fair 2024!*

### 2nd Dam:

### Zehrview Atwood Peaches

EX-94,3E EEEEE

2-08 305 18770 3.6 675 3.0 563

4-02 305 22160 3.4 749 3.1 689

7-02 305 21660 3.9 850 3.1 672

8-04 305 24170 4.1 982 2.8 670

Lifetime 142170 3.8 5451 3.2 4489

### 3rd Dam:

### Zehrview Spirte Petty

EX-90,2E EEVVE

4-11 305 19200 3.8 736 2.9 554

### 4th Dam:

### Zehrview Bango Pretty

EX-90,2E EEVVE

6-03 305 21640 3.8 825 3.1 676

### 5th Dam:

### Zehrview Skybuck Penny

EX-90,2E EEVVE

6-07 305 24460 4.0 969 3.2 776

Lifetime 143130 4.2 5957 3.4 4901

### 6th Dam:

### Zehrview Lindy Pink-TW

VG-86 +VVVV

2-02 365 24230 3.3 807 3.0 735

## LOT 11

### Zehrview Army Prada\*RC

3287558425 99%RHA-I

Born 9/8/24

Bred 3/20/26, Due 12/26/26 to

138HO7956 Fireball

& 200HO12376 Bullseye

### Golden-Oaks Srg Army-RED-ET

3139216953 4/26 PTA +1961GTPI

+2.25T +1.55UDC +1.09FLC 83%R

Surge X EX-92,2E Destry

### Zehrview D-Back Panama

6-01 EX-90 VVEEE 3144607434

2-06 365 21866 3.4 753 3.2 695

4-06 365 13707 4.2 569 3.4 470

Sire: Mr D Apple Diamondback\*RC

\*She sells as Lot 10

### 2nd Dam:

### Zehrview Absolute Paris\*RC

VG-87 VVV+V

2-05 305 17640 3.5 621 3.2 567

### Maternal sister:

### Zehrview Peaches Cream

EX-94,3E EEEEE

9-03 365 26347 4.2 1108 2.9 751

LTD 158471 4.3 6720 3.2 5116

\*Pictured w/ and sells as Lot 6

*\*1st 125,000 lb Cow & HM Sr. Champion IL State Fair 2024!*

### 3rd Dam:

### Zehrview Atwood Peaches

EX-94,3E EEEEE

4-02 305 22160 3.4 749 3.1 689

8-04 305 24170 4.1 982 2.8 670

Lifetime 142170 3.8 5451 3.2 4489

### 4th Dam:

### Zehrview Spirte Petty

EX-90,2E EEVVE

4-11 305 19200 3.8 736 2.9 554

### 5th Dam:

### Zehrview Bango Pretty

EX-90,2E EEVVE

6-03 305 21640 3.8 825 3.1 676

### 6th Dam:

### Zehrview Skybuck Penny

EX-90,2E EEVVE

6-07 305 24460 4.0 969 3.2 776

Lifetime 143130 4.2 5957 3.4 4901

### 7th Dam:

### Zehrview Lindy Pink-TW

VG-86 +VVVV

2-02 365 24230 3.3 807 3.0 735

## LOT 12

### Zehrview Army Porsche\*RC

3287558452 99%RHA-I

Born 3/2/26



**Black-Lion Complete Chaos EX-94,3E EEEVE**

6-08 365 30690 3.6 1097 3.0 926

(Dam of Lot 13 & 2nd Dam of Lot 14)

**LOT 13**

**Zehrview Absolute Colt-ET\*RC**

**7-03 EX-93,2E EEEVE**

3144607364 100%RHA-NA

Born 3/18/18

2-08 284 14264 4.0 575 3.5 502

3-08 365 21532 4.6 988 3.5 756

5-11 365 25687 4.6 1192 3.4 884

Fresh 5/15/26

*\*5th generation EX cow!*

Sire of Lot 13:

**Apples Absolute-RED-ET**

139358472 4/26 PTSA +1608GTPI

+1.90T +1.74UDC +1.69FLC 99%R

Talent X Apple EX-96,4E All-Am

Dam of Lot 13 & 2nd Dam of Lot 14:

**Black-Lion Complete Chaos**

**9-03 EX-94,3E EEEVE** 138773063

2-02 195 15350 3.6 555 2.9 438

3-03 334 23720 3.6 847 3.2 756

4-04 305 29230 3.5 1009 3.1 898

6-08 305 30690 3.6 1097 3.0 926

Sire: Regancrest Dundee-ET

(Pictured above)

**Next 4 Dams:**

**Black-Lion Haleys Comet**

**EX-91 EEE+E**

3-10 305 26080 3.3 854 2.8 731

5-00 305 27520 4.1 1126 2.8 772

6-06 305 29920 3.3 976 2.8 823

8-04 305 25080 3.3 839 2.7 673

9-06 305 27190 3.5 946 2.8 759

Lifetime 105820 3.5 5760 2.8 5654

**Black-Lion Charger Haley**

**EX-91 VEEEE**

7-05 305 28610 3.5 1010 3.2 906

8-06 305 30910 3.3 1010 2.9 901

**Trielm Park Hetty**

**EX-92,2E EEEVE**

7-10 305 28940 4.1 1194 3.0 879

Lifetime 113880 3.9 4444 3.0 3382

**Trielm Black Jack Eva**

**VG-85-CAN 86-MS**

5-07 365 23003 3.6 838 3.1 716

**LOT 14**

**Zehrview Diamondback Clove**

**6-10 EX-94,2E EEEEEE**

3133091900 99%RHA-I

Born 6/21/17

3-02 365 22800 3.2 729 3.2 721

4-08 365 25040 3.7 931 2.9 728

5-11 365 29779 3.5 1030 2.9 860

7-05 365 37447 3.8 1406 2.9 1100

LTD 124602 3.7 4456 3.0 3737

**\*DRY COW\***

**Due 6/7/26 to 138HO7450 Army**

**Mr D Apple Diamondback\*RC**

3013721049 4/26 PTA +1954GTPI

+1.77T +.96UDC +1.21FLC 99%R

Doorman X EX-94,2E Talent

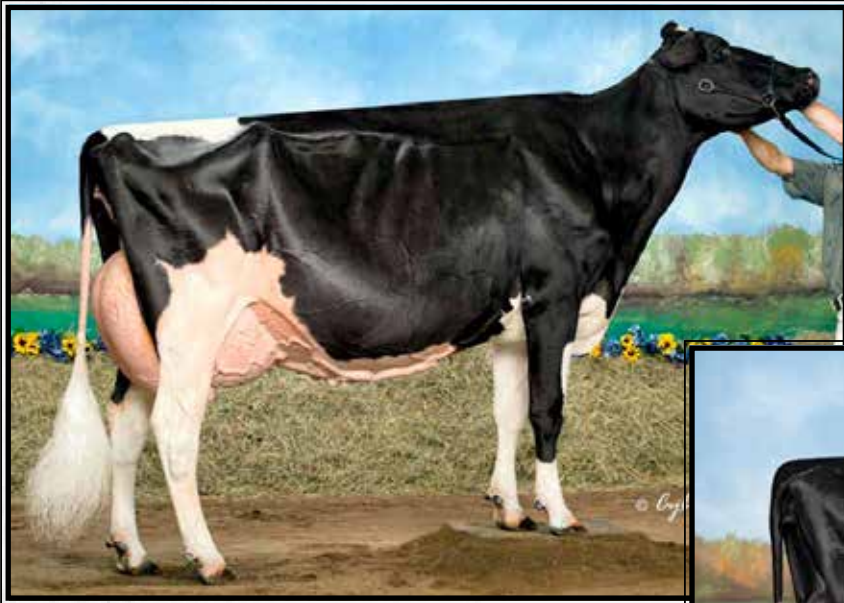
**WR-Zehr Ey Chaos Chives-ET**

**3-06 VG-85 V+V+V** 142491883

3-00 305 14630 3.8 554 3.2 472

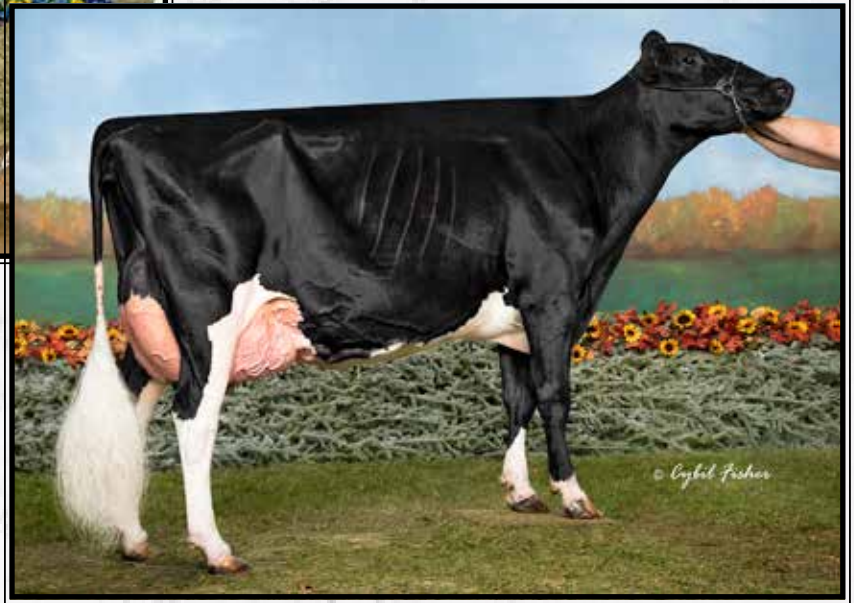
4-03 324 15500 4.4 683 3.2 498

Sire: Windy-Knoll-View Phoenix-ET



**Rainyridge Talent Barbara \*RC**  
**EX-95 EEEEE**

*Un. All-American and All-Canadian 5yr-old 2010*  
(3rd Dam of Lot 15)



**Lakeshore Sid Banana-ET**  
**EX-92 EEEVE**

3-03 365 29320 3.9 1138 2.9 861  
(Dam of Lot 15)

**LOT 15**

**Lakeshore Banana Pudding-ET**

3-03 VG-86 VV++V  
3221913382 99%RHA-I  
Born 3/4/22  
2-09 365 26369 2.4 619 3.3 870  
Fresh 4/24/26

**\*Potential 8th generation EX!**

**Val-Bisson Doorman-ET**  
107281711 4/26 PTA +2215GTPI  
+1.88T +.634UDC +.60FLC 99%R  
Bookem X EX-94 Shottle

**Lakeshore Sid Banana-ET**  
**8-03 EX-92,2E EEEVE 3125563994**  
2-02 305 20740 3.5 722 2.9 610  
3-03 365 29320 3.9 1138 2.9 861  
4-10 305 27370 4.1 1120 2.9 790  
Sire: Pine-Tree Sid-ET  
(Pictured above)  
**\*4th Spring Yrlng M-E Fall Nat'l 2018**

**2nd Dam:**  
**River-Valley Barbara 4-ET**  
**EX-90 EEEVV**  
2-01 305 18160 3.6 661 3.1 562  
3-10 305 27970 3.1 859 3.2 883

**4th Dam: (Pictured above)**  
**Rainyridge Talent Barbara \*RC**  
**EX-95 EEEEE**  
3-04 365 34465 3.6 1257 3.3 1133  
5-00 365 33548 3.9 1301 3.1 1035  
*\*HHM All-American Aged Cow 2011*  
*\*Un. All-Am & All-Can 5yr-old 2010*  
*\*Mem. Nom. A-A Best 3 females 2010*  
*\*Nom. All-Am & All Can Jr 3yr-old 2008*

**5th Dam:**  
**RF Outside Breeze-ET**  
**EX-95,2E EEEEE**  
4-02 334 31920 4.7 1488 3.5 1113  
5-03 365 37607 4.3 1623 3.3 1237  
Lifetime 165379 4.6 7460 3.6 5973  
*\*1st 125,000lb cow Sr & Grand Champ*  
*@ 2011 Southern Spring National*

**6th Dam:**  
**Rayverley Briana Milan-ET**  
**EX,2E-CAN**  
6-03 365 27075 3.4 928 3.2 862

**7th Dam:**  
**Rainyridge Tony Beauty**  
**EX-5E-CAN 9\***  
10-05 365 29081 3.5 1005 3.1 913  
Lifetime 199869 3.3 6592 3.2 6455  
*\*2X Supreme Champion WDE*  
*\*4X All-Canadian Mature Cow*  
*\*3X All-American Aged Cow*  
*\*A-A People's Choice Winner 1999*  
*\*Holstein Int'l Cow of the Year 1999*  
*\*Nom. for QII-Queen of the Breed 2004*



**Klingendale Tatoo Milly EX-90 EEEVE**  
(She sells as Lot 16 and Dam of Lot 17)

**LOT 16**

**Klingendale Tatoo Milly**

**5-04 EX-90 EEEVE**  
145417015 99%RHA-I  
Born 12/18/20  
2-05 319 21776 3.8 819 3.0 661  
3-05 365 23717 3.7 871 3.3 782  
4-09 189 15134 3.6 551 3.1 462 RIP  
Last test- 61 lbs 3.3%F 3.3%P  
SCC 115,000  
**Fresh 10/1/25**  
**Bred 3/9/26, Due 12/15/26 to**  
**7HO16104 Eye Candy**

(Lot 16 pictured above)

**LOT 17-MALE- #429**  
**Zehrview Major Magnum**  
3287558449 99%RHA-I  
Born 10/1/25  
**Sire: Robella Major**  
14104450C 4/26 PTA +2329GTPI  
+169M +2.43T +1.25UDC +.50FLC  
Delta-Lambda X Sidekick  
**Dam: Tatoo Milly (Sells as Lot 16)**

**Duckett Crush Tatoo-ET**  
3137052923 4/26 PTA +2132GTPI  
+2.20T +1.34UDC +.62FLC 99%R  
Crush X EX-93 Gold Chip

**Klingendale McCutch Million**  
**4-10 EX-92 EEEEE** 144915921  
2-03 365 28194 4.6 1296 3.0 857  
3-05 365 34846 4.7 1622 2.9 993  
4-09 365 36180 4.3 1555 2.9 1064  
Lifetime 106400 4.5 4803 3.0 3160  
Sire: De-Su Bkm McCutchen 1174-ET

**2nd Dam:**  
**Klingendale Armani Madeline**  
**GP-83 +V+++**  
2-06 356 26140 5.5 1445 3.4 883

**3rd Dam:**  
**Klingendale Guthrie Mattie**

**4th Dam:**  
**Klingendale Lou Mars**  
**GP-83 V+G++**

**5th Dam:**  
**Klingendale Belero Maxima**  
**EX-93,2E EEEVE**  
4-06 365 41570 3.6 1495 3.1 1301  
5-11 365 44440 4.4 1967 3.0 1340  
7-03 365 44730 3.6 1605 2.9 1277  
Lifetime 216190 3.8 8315 3.2 6810

**6th Dam:**  
**Klingendale Throne Mellow**  
**VG-88 VE++V**  
5-08 365 37250 2.8 1043 2.9 1074  
6-10 365 39870 2.7 1075 2.8 1101  
Lifetime 170810 2.8 4761 2.9 4972

**7th Dam:**  
**Klingendale Emory Marsha**  
**VG-87 VEV+V**  
2-05 365 34810 3.9 1371 2.9 1026  
Lifetime 107710 3.4 3672 2.9 3103



**Budjon-JK Emilys Edair-ET EX-95,2E EEEEE**

*\*Res. All-American Jr 3yr-old 2010 and Nom. All-American 4yr-old 2011  
(2nd Dam of Lot 18)*

**LOT 18**

**Ms Blackjack Kdoc Echo**

3273060483 99%RHA-I  
Born 6/2/24

**Bred 3/19/26, Due 12/25/26 to  
138HO7956 Fireball  
& 138HO7450 Army-RED**

**\*Potential 10th generation EX!**

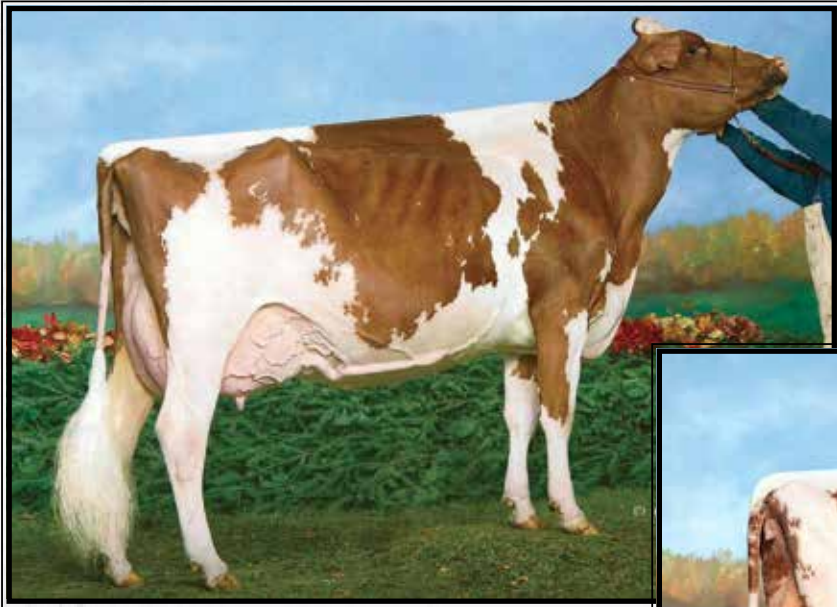
**Woodcrest King Doc**  
3132417775 4/26 PTA +2834GTPI  
+992M +27F +29P +1.0PL  
+2.38T +1.13UDC +1.60FLC 99%R  
Kingboy X VG-88 Mack

**Cal-Denier-I Gldwn Elsie-ET**  
**5-03 EX-93 EEEEE 3201362870**  
Sire: Braedale Goldwyn  
**\*1st Sr 3yr-old & Int. Champion M-W  
Fall Nat'l 2024!**

**Maternal sisters include:**  
**Budjon-JK Atwood Ekira-ET EX-94,2E**  
**\*OH State Fair Futurity Winner**  
**\*Res. Int. Champion OH State Fair 2015**  
**Budjon-JK Atwd Eware-ETS EX-94**  
**\*Res. Int Champ WI Champ Show 2015**  
**\*Champion B&O M-W Champ Show 2015**  
**\*1st Sr 2yr-old/Res. Int Champ WI State '15**  
**\*Member All-Can Jr Breeders Herd 2014**

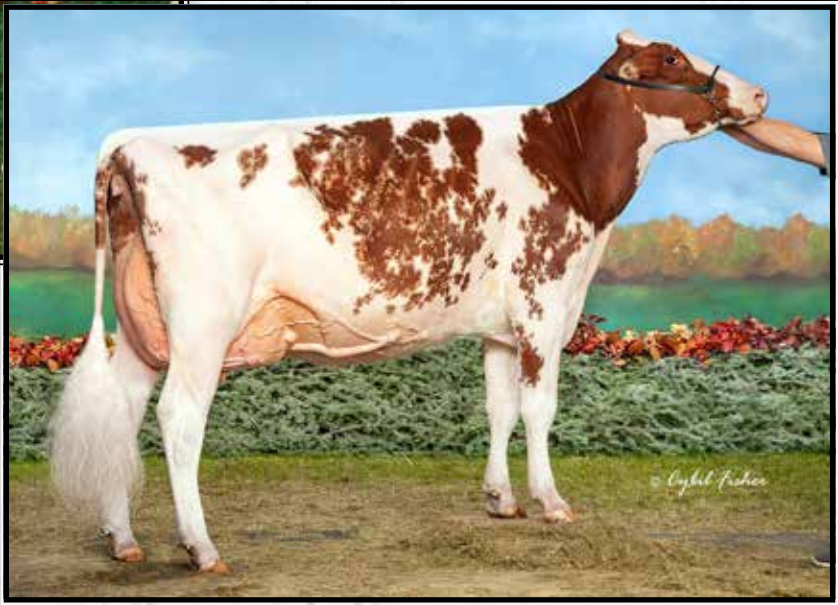
**Oakfield Gold Chip Efron-ET**  
**EX-94 (95-MS)**

**2nd Dam: (Pictured above)**  
**Budjon-JK Emilys Edair-ET**  
**EX-95,2E EEEEE**  
2-02 332 24910 3.5 880 3.3 821  
3-03 330 27000 3.5 957 3.3 904  
4-03 365 38420 3.2 1241 3.3 1264  
5-11 365 37850 3.5 1307 3.2 1204  
Lifetime 148190 3.4 5020 3.3 4850  
**\*Res. All-American Jr 3yr-old 2010**  
**\*Res. All-Canadian Jr 3yr-old 2010**  
**\*Nom. All-American 4yr-old 2011**  
**\*4th gen. All-American Nominee!**  
**3rd Dam: Budjon-JK Storm Emily-ET**  
**EX-92,2E EEEEE DOM**  
4-08 365 41090 3.7 1514 3.2 1329  
Lifetime 105520 3.6 3831 3.3 3468  
**\*Res. All-American Sr 2yr-old 2005**  
**4th Dam: Budjon-JK Linjet Eileen-ET**  
**EX-96,4E EEEEE GMD-DOM**  
5-06 365 44700 3.7 1647 3.1 1383  
Lifetime 194050 3.6 6935 3.4 6518  
**\*All-American 5yr-old 2004**  
**\*Res. All-Am Aged Cow 2005**  
**\*Nom. All-Am Sr 2yr-old 2001**  
**\*HM All-Can Sr 3yr-old 2002**  
**\*Res. Sr Champ WDE 2004**  
**5th Dam: Krull Broker Elegance**  
**EX-96,3E EEEEE GMD-DOM**  
5-07 365 40950 3.7 1522 3.1 1272  
Lifetime 183710 3.7 6878 3.4 6967  
**\*3X All-American Nominee**  
**6th Dam: Krull Starbuck Excellency**  
**EX-90 EEEEEV GMD-DOM**  
3-03 365 27140 3.5 937 3.4 930  
**7th Dam: Krull TT Excellency**  
**EX-90 DOM**  
Lifetime 109780 3.7 4077 3.1 3396  
**8th Dam: Krull Boot Mark Excellency**  
**EX-92,2E EEEE GMD-DOM**  
Lifetime 201440 3.5 7105F  
**9th Dam: Krull Kingstead Excellency**  
**EX-92,4E VVEE GMD**  
Lifetime 179790 3.6 6436F



**Scenic-Edge Joyful-RED  
EX-92,2E**

*\*Supreme Champ WDE Jr Show 2008  
(Same family as Lot 19)*



**Scenic-Edge Jordan-RED  
EX-94 EEEEE**

*\*All-American Red & White Jr 3yr-old 2021  
(Maternal sister to Lot 19)*

**LOT 19**

**Scenic-Edge Jillayne-RED-ET**

2-04 GP-84 +VGVV  
3260839987 99%RHA-I  
Born 12/6/23  
2-03 26 1683 4.0 67 3.0 51 RIP  
Last test- 78 lbs 3.6%F 2.7%P  
SCC 76,000  
Fresh 3/13/26  
Bred 5/11/26 to 799HO0148 Salary

**Full sister:**

**Scenic-Edge Jordan-RED  
EX-94 EEEEE**  
*\*All-American R&W Jr 3yr-old 2021  
\*All-California Summer Yearling 2019  
\*Nom. All-Am Summer Yrlng 2019 B&W  
\*HM Jr All-American Summer Yearling  
2019 B&W  
\*HM All-Am R&W Summer Yrlng 2019  
\*Jr All-Am R&W Summer Yrlng 2019  
\*Jr Champion RAWF R&W 2019  
(Pictured above)*

**Same family as:**

**Scenic-Edge Joyful-RED EX-92,2E**  
*\*Supreme Champ WDE Jr Show 2008  
\*Un. All-Am R&W 2006 & 2008  
\*Un Jr All-Am R&W 2006-2009  
(Pictured above)*

**Riverdown Unstopabull-RED**  
11801450C 4/26 PTA +2016GTPI  
+1.32T+1.13UDC +.97FLC 99%R  
Avalanche X EX-91,3E Applejack

**Scenic-Edge Jasmine-RED**  
**9-00 EX-93,3E EEEEE** 3134706668  
2-02 365 27260 4.4 1189 3.4 920  
3-04 365 28400 4.2 1179 3.3 932  
4-09 365 34020 4.3 1448 3.3 1133  
6-04 365 35520 4.3 1533 3.0 1077  
8-01 365 36600 4.5 1632 3.0 1081  
9-07 365 31030 3.8 1185 3.1 948  
Lifetime 211620 4.3 9025 3.2 6764  
Sire: St-Jacob Destry Heztry-ET\*RC

**2nd Dam:**  
**Scenic-Edge Jamboree-RED**  
**VG-88 EVV+V**  
2-05 306 17190 5.0 865 3.7 641  
3-07 365 26040 4.7 1225 3.6 942

**3rd Dam:**  
**Scenic-Edge Jellybean-RED**  
**EX-94,2E EEEEE**  
3-09 365 36550 4.5 1652 3.4 1250  
5-03 365 36810 4.4 1617 3.4 1253  
Lifetime 121110 4.6 5586 3.5 4220  
*\*Jr Champ WDE R&W Show 2009  
\*R. Jr Champ WDE R&W Show 2008*

**4th Dam:**  
**Scenic-Edge SS Justine-ET\*RC**  
**EX-93,3E EEEEE**  
3-02 365 39440 3.6 1410 3.0 1164  
9-08 365 34580 3.5 1210 2.9 1013  
Lifetime 154830 3.5 5481 3.0 2851

**5th Dam:**  
**Howard-Home RMK Jena-RED**  
**VG-86 VVVV+**  
2-03 365 27300 4.3 1172 3.3 888

**6th Dam:**  
**Howard-Home Promotion Joy-RED**  
**EX-90 EVEE**  
4-08 316 25010 3.9 981 3.0 750

**7th Dam:**  
**Howard-Home Caveman Joy-RED**  
**VG-87 VVVV**  
6-06 305 23370 3.8 895 2.9 684  
Lifetime 160620 3.9 6233 3.1 4942

**8th Dam:**  
**Howard-Home Jetstar Jamie**  
**VG-85 +VVV**  
3-08 305 21290 3.1 661 2.8 597



**Ludwigs-DG Goldwyn Emmy-ET  
EX-94,3E EEEEE**

*\*1st 150,000 lb Cow M-E Fall National 2016  
(3rd Dam of Lot 15)*



**Lakeshore Solomon Emore  
UG-88 EEEUU**

*\*1st Summer Yearling M-E Fall Nat'l 2018  
(2nd Dam of Lot 20)*

**LOT 20**

**Lakeshore Alt Eloise-ET\*RC**

2-04 VG-85 +V++V  
3272927200 99%RHA-I  
Born 12/3/23  
2-03 32 1947 4.0 77 3.2 62 RIP  
Last test- 72 lbs 3.6%F 2.9%P  
SCC 27,000  
Fresh 3/7/26  
Bred 5/12/26 to  
250HO12961 King Doc (sexed)

**Farnear Altitude-RED-ET**  
3128013348 4/26 PTA +2217GTPI  
+2.31T+1.58UDC+1.25FLC 99%R  
Arvis X EX-96,2E McCutchen

**Lakeshore Moovin Electra-ET**  
4-08 EX-90 EEVVE 3221913359  
2-04 365 29040 4.2 1229 3.4 990  
4-02 321 29540 4.2 1245 3.4 1006  
Sire: Lindenright Moovin-ET\*RC

2nd Dam: (Pictured above)  
Lakeshore Solomon Emore  
VG-88 EEEVV  
*\*1st Summer Yearling M-E Fall Nat'l 2018*  
3rd Dam: Lakeshore Atwood Emily-ET  
GP-84 VVVV+  
4th Dam: (Pictured above)  
Ludwigs-DG Goldwyn Emmy-ET  
EX-94,3E EEEEE  
4-11 305 39000 3.8 1491 3.0 1176  
7-02 305 33870 4.0 1348 2.8 949  
Lifetime 253260 4.3 10777 3.2 8209  
*\*Member Nom. All-American Sr. Best 3  
\*1st 150,000 lb Cow M-E Fall Nat'l 2016  
\*2nd 5yr-old M-W Sprng Nat'l 2014  
\*1st Jr 3yr-old M-W Spring Nat'l 2012*  
5th Dam: Ma-Tom-Ba Terason Enigma-ET  
VG-87 EVVVV  
2-04 305 21510 4.2 901 3.4 735  
*\*Un All-Am Produce of Dam 2012*  
6th Dam: Budjon-JK Linjet Evalyn-ET  
EX-91 EEEVV  
3-06 365 38510 4.2 1631 3.3 1289  
**Sister include:**  
Budjon-JK Linjet Eileen-ET EX-96,4E  
*-All-American 5yr-old 2004*  
Budjon-JK Encore Electra-ET EX-95,2E  
*-6X All-Am & 3X All-Can Nominee*  
Budjon-JK Encore Expose-ET EX-95,2E  
Budjon-JK Encore Express-ET EX-95  
7th Dam: Krull Broker Elegance  
EX-96,3E EEEEE GMD-DOM  
5-07 365 40950 3.7 1522 3.1 1272  
Lifetime 183240 3.7 6878 3.2 1069  
*\*3X All-American Nominee*  
8th Dam: Krull Starbuck Excellency  
EX-90 EEEVV GMD-DOM  
3-03 365 27140 3.5 937 3.4 930  
9th Dam:  
Krull TT Excellency EX-90 DOM  
3-02 363 24320 3.5 863 3.2 783  
Lifetime 109780 3.7 4077 3.1 3396

**LOT 21**

**Zehrview Footloose Elsa**

3287558457 99%RHA-I  
Born 3/7/26  
**Sire:** Mr Footloose\*RC  
3250268032 (Believe-P\*RC X  
Oakfield Solom Footloose EX-97,2E)  
**Dam:** Alt Eloise (Sells as Lot 20)

**10th Dam:**  
Krull Boot Mark Excellency  
EX-92,2E EEEE GMD-DOM  
6-06 353 27410 3.8 1040 3.0 816  
Lifetime 201440 3.5 7105F  
**11th Dam:**  
Krull Kingstead Excellency  
EX-92,4E VVEE GMD  
Lifetime 179790 3.6 6436F



**Ms Stranshome Advnt Slim-ET\*RC EX-93,3E EEEEE**

*\*2nd Jr 3yr-old M-E Fall National 2010*  
 (2nd Dam of Lot 22 and 3rd Dam of Lot 23)

**LOT 22**

**Zehrview Bango Sea-TW**

**6-01 VG-88 EVEVV**  
 3144607432 100%RHA-NA  
 Born 3/4/20  
 3-03 365 23916 3.1 749 3.0 724  
 5-03 300 24999 3.0 753 3.1 774 RIP  
 Last test- 68 lbs 3.9%F 3.5%P  
 SCC 230,000  
**Fresh 6/12/25**  
**Due 11/9/26 to 138HO7823 Famous**

**Zehrview Astre Bango-ET**

2251332 4/26 PTA +889TPI  
 Starbuck X EX-93 Calypso

**Zehrview Acme Sydney-ET**

**8-08 EX-93,2E EEEEE** 3013444700  
 2-03 365 21017 2.7 570 3.3 688  
 4-03 365 21616 3.7 808 3.4 724  
 6-03 365 20555 3.1 639 3.2 662  
 7-11 365 18256 3.5 646 3.1 569  
 Lifetime 103719 3.4 3520 3.2 3456  
 Sire: KHW Elm-Park Acme-ET

**2nd Dam: (Pictured above)**  
**Stranshome Advnt Slim-ET\*RC**  
**EX-93,3E EEEEE**

2-01 343 25370 4.2 1076 3.4 852  
 3-02 305 25900 4.1 1057 3.5 915  
 4-07 305 32650 3.6 1160 3.2 1032  
 6-07 305 34600 3.4 1173 2.8 983  
 8-10 305 27790 3.3 921 2.8 766  
 Lifetime 243620 4.0 9806 3.3 8130  
*\*2nd Jr 3yr-old M-E Fall Nat'l 2010*  
*\*2nd Jr 2yr-old M-W Fall Nat'l 2009*  
*\*3rd 5yr-old M-W Spring Nat'l 2012*

**3rd Dam:**  
**Seilings Terrason Shelby**  
**EX-92 EEEEE**

6-10 365 30690 3.7 1137 3.0 928  
 8-06 353 27230 3.5 963 2.9 782  
 Lifetime 128210 3.8 4838 3.0 3883

**4th Dam:**  
**Dust Seilings Alvin Sadie**  
**VG-88 VEEEV**

3-08 365 35350 3.6 1310 3.0 1085  
 4-10 365 32830 3.9 1283 2.9 936  
 Lifetime 119270 3.8 4517 2.9 3469

**5th Dam:**  
**Hi-Way-Haven Broker Sue**  
**VG-85 V+V+V**

6-02 365 32550 3.9 1266 2.7 893  
 Lifetime 107390 3.9 4221 2.9 3066

**6th Dam:**  
**Hi-Way-Haven Tiger Sue**  
**VG-86 V+VVV**

2-07 365 23320 4.1 945 3.3 758



**Zehrview Rainy Silver\*RC**  
**EX-91,2E EEEVE**  
 (Dam of Lot 23)

**LOT 23**

**Zehrview Master Onyx**

2-04 GP-82 +V+G+  
 3225051970 99%RHA-I  
 Born 7/10/22  
 2-02 365 22945 3.6 832 3.1 716

**\*DRY COW\***

**Due 10/29/26 to 138HO7823 Famous**

**Golden-Oaks Master-ET**

3139216917 4/26 PTA +1986GTPI  
 +2.96T+1.93UDC+1.11FLC 98%R  
 Avalanche X EX-90 Doorman

**Zehrview Rainy Silver\*RC**

7-09 EX-91,2E EEEVE 3133091839  
 2-05 300 17240 4.1 707 3.5 612  
 3-05 283 17150 3.8 647 3;2 554

Sire: rainyridge Barnie-ET\*RC  
 (Pictured above)

**\*5th Winter Yrlng M-E Fall Nat'l 2017**  
**\*Int. & Grand Champion IL State Fair**  
**2018 as a 2yr-old!**

**2nd Dam:**

**Zehrview Absolute Salty-ET\*RC**

**3rd Dam: (Pictured w/ Lot 22)**

**Stranshome Advnt Slim-ET\*RC**  
**EX-93,3E EEEEE**

2-01 343 25370 4.2 1076 3.4 852  
 3-02 305 25900 4.1 1057 3.5 915  
 4-07 305 32650 3.6 1160 3.2 1032  
 6-07 305 34600 3.4 1173 2.8 983  
 Lifetime 243620 4.0 9806 3.3 8130

**\*2nd Jr 3yr-old M-E Fall Nat'l 2010**

**\*2nd Jr 2yr-old M-W Fall Nat'l 2009**

**\*3rd 5yr-old M-W Spring Nat'l 2012**

**4th Dam:**

**Seilings Terrason Shelby**

**EX-92 EEEEE**

6-10 365 30690 3.7 1137 3.0 928  
 8-06 353 27230 3.5 963 2.9 782  
 Lifetime 128210 3.8 4838 3.0 3883

**5th Dam:**

**Dust Seilings Alvin Sadie**

**VG-88 VEEEV**

3-08 365 35350 3.6 1310 3.0 1085  
 4-10 365 32830 3.9 1283 2.9 936  
 Lifetime 119270 3.8 4517 2.9 3469

**6th Dam:**

**Hi-Way-Haven Broker Sue**

**VG-85 V+V+V**

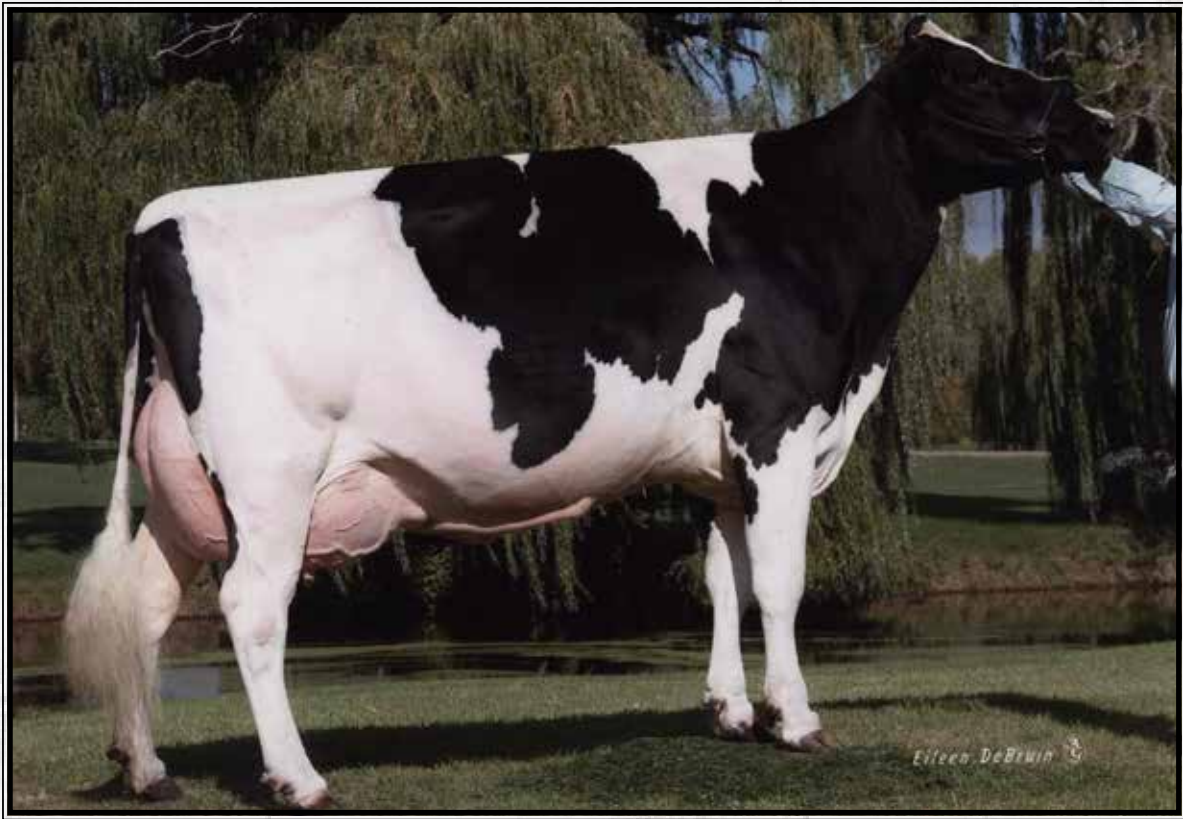
6-02 365 32550 3.9 1266 2.7 893  
 Lifetime 107390 3.9 4221 2.9 3066

**7th Dam:**

**Hi-Way-Haven Tiger Sue**

**VG-86 V+VVV**

2-07 365 23320 4.1 945 3.3 758



**Zehrview Bango Rose EX-94,4E EEEEE**

Lifetime 235230 4.4 7704 2.9 6835

(Descendants sell as Lots 24-27 and same family as Lots 24-35)

**LOT 24**

**Zehrview Army Rubi-RED**

**5-07 EX-91 EEVVE**

3225051927 99%RHA-I

Born 9/7/20

3-07 291 17236 4.0 682 3.4 579

4-07 365 24182 4.1 986 3.4 832

5-10 123 10051 3.6 363 3.1 308 RIP

Last test- 73 lbs 3.8%F 3.3%P

SCC 20,000

**Fresh 12/6/25**

**Due 10/26/26 to 54HO1056 Footloose**

**Golden-Oaks Srg Army-RED-ET**

3139216953 4/26 PTA +1961GTPI

+2.25T +1.55UDC +1.09FLC 83%R

Surge X EX-92,2E Destry

**Zehrview Abslute Rhubarb-ET\*RC**

**7-08 EX-92,2E EEEEE 3013444689**

2-06 305 19770 3.6 703 3.2 637

3-09 305 19540 3.8 750 3.3 650

5-06 305 18100 3.8 684 3.1 565

7-00 305 17280 4.3 744 3.3 562

8-01 242 13930 3.5 481 3;1 430

Lifetime 109350 3.9 4275 3.3 3616

Sire: Apple Absolute-RED-ET

**2nd Dam:**

**Zehrview Bango Rose**

**EX-94,4E EEVVE**

2-05 305 17980 3.4 620 2.9 527

3-05 274 18970 3.4 650 3.1 583

4-04 305 23550 3.1 724 2.9 679

5-05 305 23920 3.2 772 2.9 689

6-06 305 18780 3.6 684 2.9 547

7-07 305 17550 3.3 580 2.9 505

9-00 305 25180 3.1 786 2.8 709

12-04 305 21300 3.1 667 2.8 588

Lifetime 235230 4.4 7704 2.9 6835

**(Pictured above & catalog cover)**

**\*3rd 125,000 lb Cow Midwest Spring**

**Nat'l 2009**

**3rd Dam:**

**Zehrview Fancy-P Rosie**

**VG-88 VEEVV**

2-02 365 23880 3.4 803 2.8 663

**LOT 25 #428**  
**Zehrview Caught Up Radar\*RC**  
 3287558448 99%RHA-I  
 Born 12/6/25  
**Sire: D2 Summerfest Caughtup-ET**  
 14131673 4/26 PTA +2421GTPI  
 +2.51T +1.51UDC +1.74FLC 82%R  
 Summerfest X EX-95 3X All-Am Unix  
**Dam: Rubi-RED (Sells as Lot 24)**

# LOT 26

## Zehrview Creed Rumi\*RC

3263438688 99%RHA-I  
Born 9/14/23

Fresh 5/8/26

### Zehrview Tattoo Creed

3144607442 4/26 PTA +1933PTPI  
Tattoo X Avalanche

### Zehrview Army Rubi-RED

**5-07 EX-91 EEVVE** 3225051927  
3-07 291 17236 4.0 682 3.4 579  
4-07 365 24182 4.1 986 3.4 832  
5-10 123 10051 3.6 363 3.1 308 RIP  
Sire: Golden-Oaks Srg Army-RED-ET  
\*She sells as Lot 25

### 2nd Dam:

**Zehrview Abslute Rhubarb-ET\*RC**  
**EX-92,2E EEEEE**  
2-06 305 19770 3.6 703 3.2 637  
3-09 305 19540 3.8 750 3.3 650  
5-06 305 18100 3.8 684 3.1 565  
7-00 305 17280 4.3 744 3.3 562  
8-01 242 13930 3.5 481 3.1 430  
Lifetime 109350 3.9 4275 3.3 3616

### 3rd Dam:

**Zehrview Bango Rose**  
**EX-94,4E EEVEE**  
4-04 305 23550 3.1 724 2.9 679  
5-05 305 23920 3.2 772 2.9 689  
9-00 305 25180 3.1 786 2.8 709  
12-04 305 21300 3.1 667 2.8 588  
Lifetime 235230 4.4 7704 2.9 6835  
**(Pictured w/ Lot 24 & catalog cover)**  
**\*3rd 125,000 lb Cow Midwest Spring Nat'l 2009**

### 4th Dam:

**Zehrview Fancy-P Rosie**  
**VG-88 VEEVV**  
2-02 365 23880 3.4 803 2.8 663

**LOT 27**  
**Zehrview Famous Reba**  
\*Reg. pending  
Born 5/8/26  
**Sire:** Zehrview T-Storm Famous  
3263438690 (Thunder Storm X  
EX-93 Diamondback- sells as Lot 2)  
**Dam:** Creed Rumi (Sells as Lot 26)

# LOT 28

## Zehrview Okaliber Rizzo

**9-03 EX-90,2E VEEVV**  
3133091844 100%RHA-NA  
Born 3/5/16

2-03 365 22023 3.2 700 3.0 657  
4-00 365 24730 3.5 852 2.8 702  
5-03 365 19140 3.3 635 3.0 579  
6-06 365 25227 3.2 817 2.8 705  
7-10 365 28269 3.6 1022 2.7 775  
10-00 19 1174 5.0 59 3.2 38  
1st test- 75 lbs 4.6%F 2.8%P  
SCC 152,000  
Fresh 3/20/26

### GS Alliance O Kaliber

CHE120100409489 4/26 PTA +2275G  
+1.56T +.96UDC +.29FLC 97%R  
Acme X Boss Iron

### Zehrview Aftershock Rossa

**8-10 VG-88 EVEVV** 3013444687  
2-05 305 20880 2.7 558 2.7 572  
4-00 305 23420 3.2 739 3.0 701  
5-11 305 20170 3.2 636 2.9 583  
7-08 305 16600 3.4 561 2.8 470  
Lifetime 114660 3.2 4659 3.0 3393  
Sire: Ms Atlees Sht Aftershock-ET

### 2nd Dam:

**Zehrview Bango Ross-ET**  
**VG-85 VVV++**  
2-08 305 20650 3.1 650 3.0 614  
3-08 305 16190 3.0 493 3.0 483  
4-10 286 18310 3.5 647 3.0 543  
5-11 305 17200 2.7 464 3.0 512  
**Full sister:**  
**Zehrview Bango Rose**  
**EX-94,4E EEVEE**  
9-00 305 25180 3.1 786 2.8 709  
Lifetime 235230 4.4 7704 2.9 6835  
**(Pictured w/ Lot 24 & catalog cover)**  
**\*3rd 125,000 lb Cow Midwest Spring Nat'l 2009**

### 3rd Dam:

**Zehrview Fancy-P Rosie**  
**VG-88 VEEVV**  
2-02 365 23880 3.4 803 2.8 663

# LOT 29

## Zehrview Army Razzle\*RC

2-08 VG-86 VV++V

3263438652 99%RHA-I

Born 10/1/22

2-02 365 21579 2.9 624 3.1 662

**\*DRY COW\***

**Due 7/28/26 to 138HO7823 Famous**

### Golden-Oaks Srg Army-RED-ET

3139216953 4/26 PTA +1961GTPI

+2.25T +1.55UDC +1.09FLC 83%R

Surge X EX-92,2E Destry

### Zehrview Okaliber Rizzo

9-03 EX-90,2E VEEVV 3133091844

2-03 365 22023 3.2 700 3.0 657

4-00 365 24730 3.5 852 2.8 702

5-03 365 19140 3.3 635 3.0 579

6-06 365 25227 3.2 817 2.8 705

7-10 365 28269 3.6 1022 2.7 775

Sire: GS Alliance O Kaliber

**\*She sells as Lot 28**

### 2nd Dam:

#### Zehrview Aftershock Rossa

VG-88 EVEVV

2-05 305 20880 2.7 558 2.7 572

4-00 305 23420 3.2 739 3.0 701

5-11 305 20170 3.2 636 2.9 583

7-08 305 16600 3.4 561 2.8 470

Lifetime 114660 3.2 4659 3.0 3393

### 3rd Dam:

#### Zehrview Bango Ross-ET

VG-85 VVV++

2-08 305 20650 3.1 650 3.0 614

#### Full sister:

#### Zehrview Bango Rose

EX-94,4E EEVVE

9-00 305 25180 3.1 786 2.8 709

Lifetime 235230 4.4 7704 2.9 6835

**(Pictured w/ Lot 24 & catalog cover)**

**\*3rd 125,000 lb Cow Midwest Spring Nat'l 2009**

### 4th Dam:

#### Zehrview Fancy-P Rosie

VG-88 VEEVV

2-02 365 23880 3.4 803 2.8 663

# LOT 30 #408

## Zehrview Eye Candy Rayban

3287558428 99%RHA-I

Born 12/5/24

**Bred 5/2/26 to 7HO13839 Tatoo**

**Sire: MB-Luckylady Eye Candy-ET**

3234629820 4/26 PTA +2474GTPI

+3.01T +2.09UDC +1.66FLC 98%R

Lambda X EX-95 3X All-Am Unix

**Dam: Razzle (Sells as Lot 29)**

# LOT 31

## Zehrview Army Roper\*RC

3-04 GP-84 VVV++

3263438663 99%RHA-I

Born 12/4/22

2-04 353 29030 2.4 703 3.0 867 RIP

Last test- 72 lbs 3.2%F 3.4%P

SCC 27,000

**Fresh 4/20/25**

**Bred 4/30/26 to**

**1387HO7823 Famous and Angus**

### Golden-Oaks Srg Army-RED-ET

3139216953 4/26 PTA +1961GTPI

+2.25T +1.55UDC +1.09FLC 83%R

Surge X EX-92,2E Destry

### Zehrview Vixen Rocky

3-06 GP-83 +++++ 3144607429

2-08 305 18110 3.2 577 2.9 534

Sire: Smith-Crest Doorman Vixen

### 2nd Dam:

#### Zehrview Okaliber Rizzo

EX-90,2E VEEVV

2-03 365 22023 3.2 700 3.0 657

4-00 365 24730 3.5 852 2.8 702

5-03 365 19140 3.3 635 3.0 579

6-06 365 25227 3.2 817 2.8 705

7-10 365 28269 3.6 1022 2.7 775

**\*She sells as Lot 28**

### 3rd Dam:

#### Zehrview Aftershock Rossa

VG-88 EVEVV

4-00 305 23420 3.2 739 3.0 701

Lifetime 114660 3.2 4659 3.0 3393

### 4th Dam:

#### Zehrview Bango Ross-ET

VG-85 VVV++

2-08 305 20650 3.1 650 3.0 614

#### Full sister:

#### Zehrview Bango Rose

EX-94,4E EEVVE

9-00 305 25180 3.1 786 2.8 709

Lifetime 235230 4.4 7704 2.9 6835

**(Pictured w/ Lot 24 & catalog cover)**

**\*3rd 125,000 lb Cow Midwest Spring Nat'l 2009**

### 5th Dam:

#### Zehrview Fancy-P Rosie

VG-88 VEEVV

2-02 365 23880 3.4 803 2.8 663

## LOT 32

### Zehrview Unix Rumor

2-07 VG-86 VVV+V

3263438684 99%RHA-I

Born 9/1/23

2-00 217 13308 4.1 540 3.3 438 RIP

Last test- 58 lbs 4.6%F 3.5%P

SCC 29,000

Fresh 9/3/25

Due 10/16/26 to 799HO071 Major

### Croteau Lesperron Unix-ET

107567492C 4/26 PTA +2382GTPI

+186M +1.51T +1.14UDC +.01FLC

Numero Uno X VG-85 Domain

### Zehrview Army Razor\*RC

2-02 VG-86 VV+VV 3225051950

2-01 365 16991 4.2 708 3.5 586

Sire: Golden-Oaks SRG Army-RED-ET

### 2nd Dam:

Zehrview Okaliber Rihanna

VG-86 EVE++

2-08 305 16010 4.0 636 3.3 535

4-06 305 12940 4.7 607 3.4 435

6-01 286 14050 4.0 557 3.0 428

7-02 305 15390 4.0 608 3.2 497

### 3rd Dam:

Zehrview Rhyme Rip

VG-86 VVVVV

4-00 305 21180 2.3 488 3.0 637

### 4th Dam:

Zehrview Simba Ripper

VG-85 VV+GV

4-03 305 21420 3.3 698 2.8 606

### 5th Dam:

Zehrview Bango Ripple-ET

VG-85 VVV++

2-08 305 21070 2.9 605 3.1 660

### Full sister:

Zehrview Bango Rose

EX-94,4E EEVEE

9-00 305 25180 3.1 786 2.8 709

Lifetime 235230 4.4 7704 2.9 6835

(Pictured w/ Lot 24 & catalog cover)

\*3rd 125,000 lb Cow Midwest Spring Nat'l 2009

### 6th Dam:

Zehrview Fancy-P Rosie

VG-88 VEEVV

2-02 365 23880 3.4 803 2.8 663

## LOT 33 #431

### Zehrview Believe Rum Chata

3287558451 99%RHA-I

Born 9/3/25

Sire: Aija Believe-P-ET\*RC

13486161C 4/26 PTA +2265GTPI

+2.39T +1.57UDC +1.09FLC 97%R

Mirand Z VG-85 Crush

Dam: Rumor (Sells as Lot 32)

## LOT 34

### Zehrview Raid Rockett

3-00 GP-81 +++++

3225051967 99%RHA-I

Born 6/4/22

2-09 365 17242 4.2 722 3.2 543

\*DRY COW\*

Due 10/24/26 to

138HO7450 Army-RED and Angus

### Carrousel Carlton Raid

2225248 4/26 PTA +954TPI

Raider C EX-96,4E Astro Jet

### Zehrview Diamondback Rhya

3-02 GP-84 VV+++ 3144607360

2-08 305 15520 3.7 581 3.3 516

4-03 294 14240 4.0 571 3.4 486

Sire: Mr D Apple Diamondback\*RC

### 2nd Dam:

Zehrview Okaliber Rihanna

VG-86 EVE++

2-08 305 16010 4.0 636 3.3 535

4-06 305 12940 4.7 607 3.4 435

6-01 286 14050 4.0 557 3.0 428

7-02 305 15390 4.0 608 3.2 497

### 3rd Dam:

Zehrview Rhyme Rip

VG-86 VVVVV

4-00 305 21180 2.3 488 3.0 637

### 4th Dam:

Zehrview Simba Ripper

VG-85 VV+GV

4-03 305 21420 3.3 698 2.8 606

### 5th Dam:

Zehrview Bango Ripple-ET

VG-85 VVV++

2-08 305 21070 2.9 605 3.1 660

### Full sister:

Zehrview Bango Rose

EX-94,4E EEVEE

9-00 305 25180 3.1 786 2.8 709

Lifetime 235230 4.4 7704 2.9 6835

(Pictured w/ Lot 24 & catalog cover)

\*3rd 125,000 lb Cow Midwest Spring Nat'l 2009

### 6th Dam:

Zehrview Fancy-P Rosie

VG-88 VEEVV

2-02 365 23880 3.4 803 2.8 663

## LOT 35 #415

### Zehrview T-Storm Rover

3287558435 99%RHA-I

Born 3/7/25

Sire: Blondin Thunder Storm

110296922C 4/26 PTA +1858GTPI

+2.50T +1.41UDC +.46FLC 98%R

Jacoby X VG-85 Beemer

Dam: Rockett (Sells as Lot 34)



**Go-Sho Bonvoyage Royale EX-94,3E EEEEE**

4-07 318 31810 4.2 1341 2.9 910  
(Descendants sell as Lots 36-39)

**LOT 36**

**Zehrview Tatoo Raine**

**6-09 EX-91,2E EEEVE**

3144607382 99%RHA-I

Born 9/9/18

3-00 365 19995 3.6 721 3.1 623

4-10 365 28809 3.6 1029 3.0 851

6-06 365 27901 3.7 1036 2.9 820

Last test- 31 lbs 5.3%F 3.8%P

**Bred 4/22/26 to 138HO7823 Famous**

**Duckett Crush Tatoo-ET**

3137052923 4/26 PTA +2132GTPI

+2.20T +1.34UDC +.62FLC 99%R

Crush X EX-93 Gold Chip

**Zehr-Go-Sho Royal Reese-ET**

**4-10 VG-85 V+V+V 3127419722**

2-06 305 17640 2.9 505 2.9 509

3-10 305 14680 3.1 458 2.9 422

Sire: Windy-Knoll-View Phoenix-ET

**2nd Dam: (Pictured above)**

**Go-Sho Bonvoyage Royale**

**EX-94,3E EEEEE**

2-06 249 18530 3.9 723 3.0 556

3-05 365 30770 4.3 1324 3.1 939

4-07 318 31810 4.2 1341 2.9 910

**3rd Dam:**

**Thal-View Milan Renee-ET**

**EX-90 EEE+E**

**4th Dam:**

**Agram Rose EX-93**

2-04 343 18620 3.8 714 3.7 697

3-05 299 19506 4.8 780 3.4 635

4-04 325 19506 4.8 928 3.6 701

**5th Dam:**

**Cranholme Rosebuck**

**VG-86-CAN**

9-03 365 21770 4.1 891 3.2 705

Lifetime 153800 4.4 6770 3.5 5414

**6th Dam:**

**Pickland Marquis Rose**

**VG-88-CAN**

9-00 365 24632 4.0 988 3.3 802

10-06 333 24096 3.8 906 3.3 802

Lifetime 152748 4.1 6268 3.4 5121

## LOT 37

### Zehrview Ash Raisin

4-08 VG-85 E++++

3225051925 100%RHA-NA

Born 10/2/20

2-09 365 18774 4.4 831 3.5 659

4-05 365 22533 5.0 1119 3.7 843

**\*DRY COW\***

**Due 6/19/26 to**

**138HO7450 Army-RED**

### Luck-E Lindy Ash-ET

2285164 4/26 PTA+1378PTPI

Lindy X EX-94,2E GMD Starbuck

### Zehrview Rainy Rhett

3144607381

Sire: Rainyridge Barnie-ET

### 2nd Dam:

**Zehr-Go-Sho Atwood Royce**

**VG-87 VVVVV**

2-02 305 13780 3.7 509 3.2 440

3-11 305 16200 3.9 639 3.1 507

### 3rd Dam:

**Zehr-Go-Slo Dun Royalty-ET**

**GP-82 VV+G+**

4-04 305 14400 4.1 594 3.4 496

### 4th Dam: (Pictured w/ Lot 36)

**Go-Sho Bonvoyage Royale**

**EX-94,3E EEEEE**

3-05 365 30770 4.3 1324 3.1 939

4-07 318 31810 4.2 1341 2.9 910

### 5th Dam:

**Thal-View Milan Renee-ET**

**EX-90 EEE+E**

### 6th Dam:

**Agram Rose EX-93**

4-04 325 19506 4.8 928 3.6 701

### 7th Dam:

**Cranholme Rosebuck VG-86-CAN**

9-03 365 21770 4.1 891 3.2 705

Lifetime 153800 4.4 6770 3.5 5414

### 8th Dam:

**Pickland Marquis Rose VG-88-CAN**

10-06 333 24096 3.8 906 3.3 802

Lifetime 152748 4.1 6268 3.4 5121

## LOT 38 #416

### Zehrview T-Storm Regret

3287558436 99%RHA-I

Born 3/8/25

### Sire of Lot 38:

**Blondin Thunder Storm**

110296922C 4/26 PTA+1858GTPI

+2.50T+1.41UDC +.46FLC 98%R

Jacoby X VG-85 Beemer

### Sire of Lot 39:

**Golden-Oaks Srg Army-RED-ET**

3139216953 4/26 PTA+1961GTPI

+2.25T+1.55UDC +1.09FLC 83%R

Surge X EX-92,2E Destry

### Dam of Lots 38 & 39:

**Zehrview Ash Raisin**

4-08 VG-85 E++++ 3225051925

2-09 365 18774 4.4 831 3.5 659

4-05 365 22533 5.0 1119 3.7 843

Sire: Luck-E Lindy Ash-ET

**\*She sells as Lot 37**

## LOT 39 #383

### Zehrview Army Remedy\*RC

3263438683 99%RHA-I

Born 7/24/23

**Due 6/14/26 to 138HO7823 Famous**

### 2nd Dam: Zehrview Rainy Rhett

### 3rd Dam:

**Zehr-Go-Sho Atwood Royce**

**VG-87 VVVVV**

3-11 305 16200 3.9 639 3.1 507

### 4th Dam:

**Zehr-Go-Slo Dun Royalty-ET**

**GP-82 VV+G+**

4-04 305 14400 4.1 594 3.4 496

### 5th Dam: (Pictured w/ Lot 36)

**Go-Sho Bonvoyage Royale**

**EX-94,3E EEEEE**

3-05 365 30770 4.3 1324 3.1 939

4-07 318 31810 4.2 1341 2.9 910

### 6th Dam:

**Thal-View Milan Renee-ET**

**EX-90 EEE+E**

### 7th Dam:

**Agram Rose EX-93**

4-04 325 19506 4.8 928 3.6 701

### 8th Dam:

**Cranholme Rosebuck VG-86-CAN**

9-03 365 21770 4.1 891 3.2 705

Lifetime 153800 4.4 6770 3.5 5414

### 9th Dam:

**Pickland Marquis Rose VG-88-CAN**

10-06 333 24096 3.8 906 3.3 802

Lifetime 152748 4.1 6268 3.4 5121



**Sandy-Valley Atwd Blacky-ET**  
**EX-94,2E EEEEE**

*\*1st Aged Cow Midwest Spring Nat'l 2016*  
(Descendants sell as Lots 40-42)



**Miss Blackys Bikini**  
**EX-91 EEVVE**

*\*2nd 4yr-old Southern Nat'l 2016*  
(Descendants sell as Lots 40-42)

**LOT 40**

**Ms Zehr-JMK Diamond Bling**

2-01 VG-85 VVV++  
3225051965 99%RHA-I  
Born 3/8/22  
1-11 365 19584 3.5 688 3.2 623  
3-05 215 13636 2.9 402 3.4 468 RIP  
Last test- 38 lbs 4.0%F 3.4%P  
SCC 54,000  
Fresh 9/5/25  
Due 10/31/26 to  
200HO12376 Bullseye

**Mr D Apple Diamondback\*RC**  
3013721049 4/26 PTA +1954GTPI  
+1.77T +.96UDC +1.21FLC 99%R  
Doorman X EX-94,2E Talent

**Miss Blackys Bikini**  
4-03 EX-91 EEVVE 70929614  
2-06 364 27610 4.0 1104 3.3 906  
3-07 305 24260 4.0 979 3.3 802  
Sire: Golden-Oaks ST Alexander-ET  
(Pictured above)  
*\*2nd 4yr-old Southern Nat'l 2016*  
*\*3rd Jr 3 Southern Nat'l 2015*

**2nd Dam: (Pictured above)**  
**Sandy-Valley Atwd Blacky-ET**  
**EX-94,2E EEEEE**  
2-01 365 29050 4.3 1248 3.3 947  
3-04 365 36180 4.0 1431 3.1 1112  
5-07 365 46100 4.0 1824 3.0 1391  
Lifetime 145800 4.2 6061 3.3 4750  
**3rd Dam:**  
**Regancrest Brynna-ET**  
**EX-91 EEEV GMD**  
2-04 365 32060 3.6 1166 3.0 959  
**4th Dam:**  
**Regancrest-PR Barbie-ET**  
**EX-92 EEEEE 94-MS GMD-DOM**  
2-06 365 31690 3.9 1237 3.3 1050  
*\*HM All-American Jr 3yr-old 2004*  
**5th Dam:**  
**Regancrest Juror Brina-ET**  
**EX-92 EEEVE GMD**  
4-04 365 40640 3.6 1478 2.8 1140  
*\*Res. Grand Champion Iowa State Fair*  
**6th Dam:**  
**Regancrest Aerostar Bert-ET**  
**EX-90 EEEVV GMD-DOM**  
5-02 365 37790 3.6 1357 3.2 1215  
Lifetime 109350 3.7 4031 3.3 3558  
**7th Dam:**  
**Regancrest Mark Chairman Bea**  
**EX-91,2E VEEE GMD-DOM**  
7-09 365 33830 3.8 1276 3.1 1052  
Lifetime 140130 4.1 5711 3.3 4616  
**8th Dam:**  
**Regancrest Board Chairman Bea**  
**EX-90 VEVE**  
5-09 365 26010 4.1 1059 3.4 884  
**9th Dam:**  
**Regancrest Apache Standout Bea**  
**VG-86 EX-MS**  
Lifetime 131940 3.6 4744

# LOT 41

## Zehrview Showtime Barbie

2-01 GP-83 GVG+V  
3263438696 99%RHA-I  
Born 3/5/24  
1-11 35 2036 3.8 78 2.9 59 RIP  
Last test- 60 lbs 4.4%F 3.2%P  
SCC 100,000  
Fresh 3/4/26

### Jacobs Showtime-ET\*RC

111576086C 4/26 PTA +2699GTPI  
+502M +.13% +55F +.07% +35P  
+1.99T +.90UDC +.58FLC 98%R  
Excalibur X Shakira EX-97,3E All-Am

### Ms Zehr-JMK Diamond Bling

2-01 VG-85 VVV++ 3225051965  
1-11 365 19584 3.5 688 3.2 623  
3-05 215 13636 2.9 402 3.4 468 RIP  
Sire: Mr D Apple Dimaondback\*RC  
\*She sells as Lot 40

### 2nd Dam: (Pictured w/ Lot 40)

Miss Blackys Bikini  
EX-91 EEVVE  
2-06 364 27610 4.0 1104 3.3 906  
3-07 305 24260 4.0 979 3.3 802  
\*2nd 4yr-old South Spring Nat'l 2016  
\*3rd Jr 3 South Spring Nat'l 2015

### 3rd Dam: (Pictured w/ Lot 40)

Sandy-Valley Atwd Blacky-ET  
EX-94,2E EEEEE  
3-04 365 36180 4.0 1431 3.1 1112  
5-07 365 46100 4.0 1824 3.0 1391  
Lifetime 145800 4.2 6061 3.3 4750

### 4th Dam: Regancrest Brynna-ET

EX-91 EEEEV GMD  
2-04 365 32060 3.6 1166 3.0 959

### 5th Dam: Regancrest-PR Barbie-ET

EX-92 EEEEE 94-MS GMD-DOM  
2-06 365 31690 3.9 1237 3.3 1050  
\*HM All-American Jr 3yr-old 2004

### 6th Dam: Regancrest Juror Brina-ET

EX-92 EEEVE GMD  
4-04 365 40640 3.6 1478 2.8 1140  
\*Res. Grand Champion Iowa State Fair

### 7th Dam: Regancrest Aerostar Bert-ET

EX-90 EEEV GMD-DOM  
5-02 365 37790 3.6 1357 3.2 1215  
Lifetime 109350 3.7 4031 3.3 3558

### 8th Dam: Regancrest Mark Chairman Bea

EX-91,2E VEVE GMD-DOM  
7-09 365 33830 3.8 1276 3.1 1052  
Lifetime 140130 4.1 5711 3.3 4616

### 9th Dam:

Regancrest Board Chairman Bea

EX-90 VEVE  
5-09 365 26010 4.1 1059 3.4 884

### 10th Dam:

Regancrest Apache Standout Bea

VG-86 EX-MS  
Lifetime 131940 3.6 4744

# LOT 42

## Zehrview Bullseye Butters

3287558453 99%RHA-I  
Born 3/4/26  
Sire: MB-Luckylady Bullseye-ET  
110296922C 4/26 PTA +1858GTPI  
+2.50T +1.41UDC +.46FLC 98%R  
Lambda X EX-95 3X All-Am Unix  
Dam: Barbie (Sells as Lot 41)

# LOT 43

## Erbacres Double Trouble

2-04 VG-85 +V+VV  
3268523302 99%RHA-I  
Born 12/1/23  
2-03 27 1757 4.1 72 2.9 51 RIP  
1st test- 78 lbs 3.7%F 2.6%P  
SCC 44,000  
Fresh 3/12/26

### Duckett Crush Tatoo-ET

3137052923 4/26 PTA +2132GTPI  
+2.20T +1.34UDC +.62FLC 99%R  
Crush X EX-93 Gold Chip

### Erbacres Dback Double Dos

3-05 EX-90 EEEVE 145106186  
2-01 343 22200 4.1 939 3.4 748  
3-03 273 22000 4.1 908 3.2 713  
Sire: Mr D Apple Diamondback\*RC

### 2nd Dam:

Erbacres Doodle Dos

### 3rd Dam:

Erbacres Atw Snickdoodle  
EX-90 EEE+E  
4-04 365 25880 4.3 1123 3.5 898

### 4th Dam:

Erbacres Aspen Snickers\*RC  
VG-89 EEE+V  
5-10 346 22020 4.1 902 3.3 716

### 5th Dam:

Erbacres RM Sydney  
VG-86 VEVVV  
4-11 365 24800 4.2 1050 3.1 760  
Lifetime 102600 4.3 4398 3.1 3189

### 5th Dam:

Erbacres Astro Surprise  
EX-91,3E VEVEE  
9-04 341 28510 4.2 1195 3.1 892  
Lifetime 196700 4.6 9124 3.2 6360

### 6th Dam:

Erbacres Sheik Shannon  
EX-92,2E EEEEE  
8-06 365 33330 4.2 1384 3.1 1034  
Lifetime 151480 4.1 6256 3.2 4905

### 7th Dam:

Erbacres Elev Sweet Honesty  
EX-93,4E EEEE  
6-07 365 24680 3.9 953 3.0 737  
Lifetime 221550 3.9 8681 3.1 4799

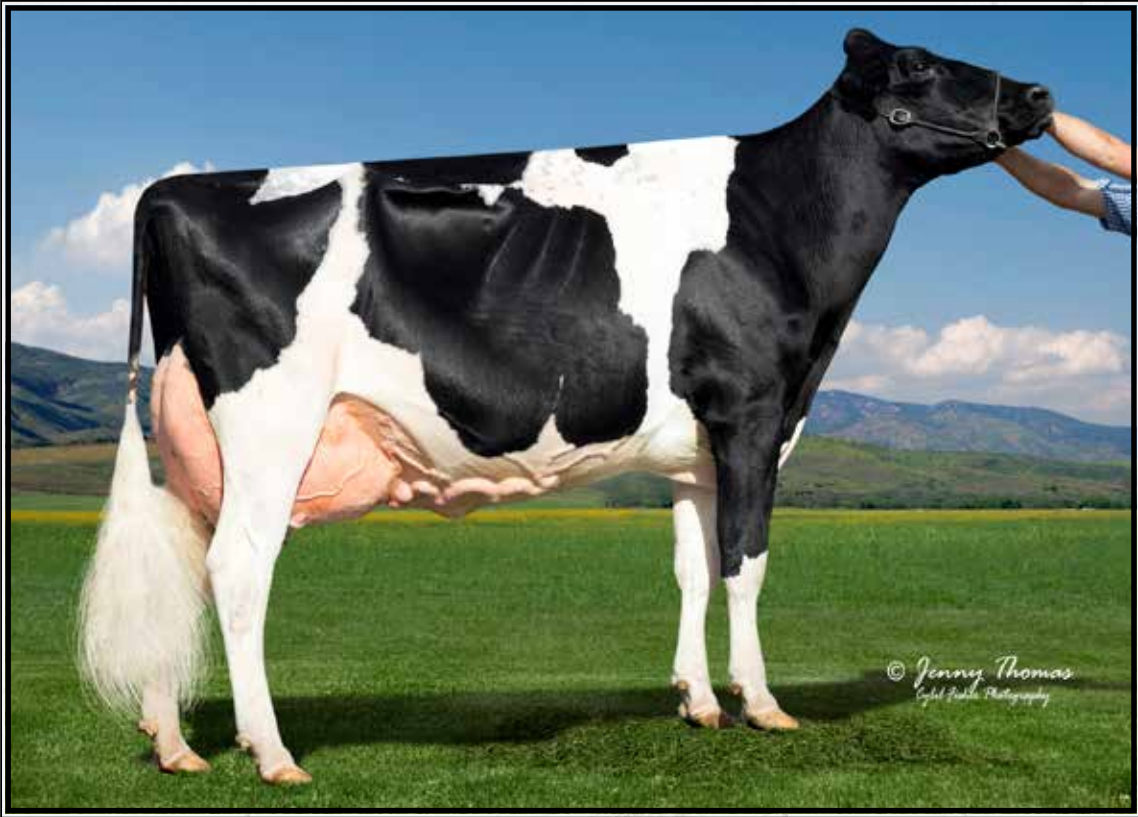
### 8th Dam:

Erbacres Tony Joy Love  
VG-88 VEVE GMD-DOM  
9-01 365 28720 3.3 938  
Lifetime 191690 3.4 6595

# LOT 44

## Zehrview Eye Candy Double D

3287558459 99%RHA-I  
Born 3/12/26  
Sire: MB-Luckylady Eye Candy-ET  
3234629820 4/26 PTA +2474GTPI  
+3.01T +2.09UDC +1.66FLC 98%R  
Lambda X EX-95 3X All-Am Unix  
Dam: Trouble (Sells as Lot 43)



**Zehrview Atwood Dess EX-93**

*\*Res. Grand Champion California State Show 2016  
(FULL sister to the Dam or 2nd Dam of Lots 45-51)*

**LOT 45**

**Zehrview Unstopabull Demi\*RC**

4-02 EX-90 EVVVE  
 3144607443 99%RHA-I  
 Born 9/3/20  
 2-09 365 20727 3.0 630 3.2 655  
 4-00 328 20650 3.4 697 3.3 679  
 5-00 213 16154 3.4 547 2.9 472 RIP  
 Last test- 73 lbs 4.2%F 3.3%P  
 SCC 44,000  
 Fresh 9/7/25  
 Due 10/16/26 to 138HO7956 Fireball

Sire of Lot 45:

**Riverdown Unstopabull-RED**  
 11801450C 4/26 PTA +2016GTPI  
 +1.32T +1.13UDC +.97FLC 99%R  
 Avalanche X EX-91,3E Applejack

Sire of Lot 46:

**Golden-Oaks Srg Army-RED-ET**  
 3139216953 4/26 PTA +1961GTPI  
 +2.25T +1.55UDC +1.09FLC 83%R  
 Surge X EX-92,2E Destry

Dam of Lots 45 & 46:

**Zehrview Atwood Daisy**  
 9-03 EX-90,2E EV+EE 3133091856  
 2-06 275 15720 4.0 621 3.4 531  
 3-05 305 18100 4.1 749 3.5 629  
 4-05 305 20360 4.4 892 3.4 699  
 5-04 305 21290 4.0 844 3.4 708  
 7-11 305 22490 3.5 793 3.2 729  
 Lifetime 110290 4.0 4369 3.4 3707  
 Sire: Maple-Downs-I G W Atwood-ET  
**FULL sister:**

**Zehrview Atwood Dess EX-93**  
 (Pictured above)

*\*1st Sr 3 & Int. Champion California State Show 2015  
 \*Res. Grand Champion California State Show 2016*

**2nd Dam:**

**Hylite Dundee Desa**  
**EX-93,4E EEEEE**  
 2-01 305 12950 4.0 522 3.4 441  
 4-02 261 14850 3.8 567 3.4 508  
 5-02 277 14590 3.9 568 3.5 510  
 6-01 305 20450 3.3 679 3.4 704  
 7-06 305 27290 3.9 1054 3.2 872  
 9-04 305 21580 3.9 842 3.4 726  
 11-08 305 19450 4.1 797 3.1 605  
 Lifetime 169880 3.9 6563 3.4 5815

**3rd Dam:**

**Hylite LJ Dolly**  
**VG-87 VEVEV**  
 4-01 363 20660 4.3 884 3.2 661

**4th Dam:**

**Cavanaleck Duchess Bikita**  
**EX-90,3E VEEEE**  
 3-04 306 19830 3.9 765 3.5 688

**LOT 46 #391**

**Zehrview Army Darling\*RC**

3263438691 99%RHA-I  
 Born 3/4/24  
 Due 5/29/26 to 138HO7956 Fireball

## LOT 47

### Zehrview T-Storm Danci-RED

3263438680 99%RHA-I  
Born 6/4/23  
2-09 26 1318 4.2 55 3.3 44 RIP  
Last test- 61 lbs 3.8%F 3.0%P  
SCC 18,000  
Fresh 3/13/26  
Bred 4/7/26, Due 1/13/27 to  
799HO148 Salary

#### Blondin Thunder Storm

110296922C 4/26 PTA +1858GTPI  
+2.50T +1.41UDC +.46FLC 98%R  
Jacoby X VG-85 Beemer

#### Zehrview Unstopabull Demi\*RC

4-02 EX-90 EVVVE 3144607443  
2-09 365 20727 3.0 630 3.2 655  
4-00 328 20650 3.4 697 3.3 679  
5-00 213 16154 3.4 547 2.9 472 RIP  
Sire: Riverdown Unstopabull-RED  
\*She sells as Lot 45

#### 2nd Dam:

##### Zehrview Atwood Daisy

EX-90,2E EV+EE  
2-06 275 15720 4.0 621 3.4 531  
3-05 305 18100 4.1 749 3.5 629  
4-05 305 20360 4.4 892 3.4 699  
5-04 305 21290 4.0 844 3.4 708  
7-11 305 22490 3.5 793 3.2 729  
Lifetime 110290 4.0 4369 3.4 3707

#### FULL sister:

##### Zehrview Atwood Dess EX-93

(Pictured w/ Lot 45)  
\*1st Sr 3 & Int. Champion California  
State Show 2015  
\*Res. Grand Champion California  
State Show 2016

#### 3rd Dam:

##### Hylite Dundee Desa

EX-93,4E EEEEE  
7-06 305 27290 3.9 1054 3.2 872  
Lifetime 169880 3.9 6563 3.4 5815

#### 4th Dam:

##### Hylite LJ Dolly

VG-87 VEVEV  
4-01 363 20660 4.3 884 3.2 661

#### 5th Dam:

##### Cavanaleck Duchess Bikita

EX-90,3E VEEEEE  
3-04 306 19830 3.9 765 3.5 688

## LOT 48

### Zehrview Famous Dynamite\*RC

3287558461 99%RHA-I  
Born 3/13/26  
Sire: Zehrview T-Storm Famous  
3263438690 (Thunder Storm X  
EX-93 Diamondback- sells as Lot 2)  
Dam: Danci-RED (Sells as Lot 47)

## LOT 49 #427

### Zehrview Army Doodle-RED

3287558447 99%RHA-I  
Born 9/7/25

#### Golden-Oaks Srg Army-RED-ET

3139216953 4/26 PTA +1961GTPI  
+2.25T +1.55UDC +1.09FLC 83%R  
Surge X EX-92,2E Destry

#### Zehrview Unstopabull Demi\*RC

4-02 EX-90 EVVVE 3144607443  
2-09 365 20727 3.0 630 3.2 655  
4-00 328 20650 3.4 697 3.3 679  
5-00 213 16154 3.4 547 2.9 472 RIP  
Sire: Riverdown Unstopabull-RED  
\*She sells as Lot 45

#### 2nd Dam:

##### Zehrview Atwood Daisy

EX-90,2E EV+EE  
2-06 275 15720 4.0 621 3.4 531  
3-05 305 18100 4.1 749 3.5 629  
4-05 305 20360 4.4 892 3.4 699  
5-04 305 21290 4.0 844 3.4 708  
7-11 305 22490 3.5 793 3.2 729  
Lifetime 110290 4.0 4369 3.4 3707

#### FULL sister:

##### Zehrview Atwood Dess EX-93

(Pictured w/ Lot 45)  
\*1st Sr 3 & Int. Champion California  
State Show 2015  
\*Res. Grand Champion California  
State Show 2016

#### 3rd Dam:

##### Hylite Dundee Desa

EX-93,4E EEEEE  
7-06 305 27290 3.9 1054 3.2 872  
Lifetime 169880 3.9 6563 3.4 5815

#### 4th Dam:

##### Hylite LJ Dolly

VG-87 VEVEV  
4-01 363 20660 4.3 884 3.2 661

#### 5th Dam:

##### Cavanaleck Duchess Bikita

EX-90,3E VEEEEE  
3-04 306 19830 3.9 765 3.5 688

## LOT 50

### Zehrview Army Denton\*RC

3-04 GP-83 VV+V+

3263438659 99%RHA-I

Born 12/4/22

2-02 313 15826 3.4 537 3.6 565

3-03 25 944 5.0 47 3.2 30 RIP

1st test- 44 lbs 4.5%F 2.8%P

SCC 27,000

Fresh 3/14/26

Bred 5/10/26 to 200HO12376 Bullseye

### Golden-Oaks Srg Army-RED-ET

3139216953 4/26 PTA +1961GTPI

+2.25T +1.55UDC +1.09FLC 83%R

Surge X EX-92,2E Destry

### Zehrview Doorman Dallas

4-08 VG-88 EVV+E 3144607419

3-08 285 17419 4.3 745 3.4 599

4-06 350 21771 4.4 963 3.7 811

5-08 365 18403 4.3 795 3.8 690

Sire: Val-Bisson Doorman-ET

### 2nd Dam:

#### Zehrview Atwood Daisy

EX-90,2E EV+EE

2-06 275 15720 4.0 621 3.4 531

3-05 305 18100 4.1 749 3.5 629

4-05 305 20360 4.4 892 3.4 699

5-04 305 21290 4.0 844 3.4 708

7-11 305 22490 3.5 793 3.2 729

Lifetime 110290 4.0 4369 3.4 3707

#### FULL sister:

#### Zehrview Atwood Dess EX-93

(Pictured w/ Lot 45)

\*1st Sr 3 & Int. Champion California State Show 2015

\*Res. Grand Champion California State Show 2016

### 3rd Dam:

#### Hylite Dundee Desa

EX-93,4E EEEEE

7-06 305 27290 3.9 1054 3.2 872

Lifetime 169880 3.9 6563 3.4 5815

### 4th Dam:

#### Hylite LJ Dolly

VG-87 VEVEV

4-01 363 20660 4.3 884 3.2 661

### 5th Dam:

#### Cavanaleck Duchess Bikita

EX-90,3E VEEEE

3-04 306 19830 3.9 765 3.5 688

## LOT 51

### Zehrview Major Del Rio

3287558463 99%RHA-I

Born 3/14/26

#### Sire: Robella Major

14104450C 4/26 PTA +2329GTPI

+169M +2.43T +1.25UDC +.50FLC

Delta-Lambda X Sidekick

#### Dam: Denton(Sells as Lot 50)

## LOT 52

### Zehrview Army Sandi-RED

3-04 VG-86 VVV+V

3263438654 99%RHA-I

Born 12/2/22

2-07 280 15822 4.9 774 3.6 567 RIP

Last test- 55 lbs 5.5%F 3.7%P

SCC 13,000

Fresh 7/2/25

Due 7/13/26 to 138HO7956 Fireball

### Golden-Oaks Srg Army-RED-ET

3139216953 4/26 PTA +1961GTPI

+2.25T +1.55UDC +1.09FLC 83%R

Surge X EX-92,2E Destry

### Zehrview Add-P Snowie-RED

3-11 GP-83 +V+G+ 3144607384

2-11 305 15350 4.0 609 3.4 525

4-03 287 11000 4.1 454 3.5 385

Sire: Mr Ansly Addiction-P-RED-ET

### 2nd Dam:

#### Zehrview Revolver Serena\*RC

GP-81 +++VG

2-02 305 16840 3.4 576 3.2 540

### 3rd Dam:

#### Zehrview Talent Spot-ET

VG-85 +VV+V

4-08 305 19260 3.4 649 2;9 558

### 4th Dam: (Pictured w/ Lot 53)

#### Zehrview Mat Iris

EX-91,2E EEVVE

5-03 305 22430 3.5 782 2.9 646

\*All-American Jr 2yr-old 2004

\*All-American Spr Yrlng 2003

\*1st Spring Yearling & Res. Jr Champion Int'l Holstein Show 2003

### 5th Dam:

#### Zehrview Lindy Ink-TW

VG-85 V+VVV

6-01 303 24050 3.8 919 3.2 759

Lifetime 111490 3.1 3457 3.1 3426



**Zehrview Mat Iris EX-91,2E EEVVE**

*\*All-American Jr 2yr-old 2004 & All-American Spring Yearling 2003  
(3rd Dam of Lot 53 & 4th Dam of Lot 52)*

**LOT 53**

**Zehrview Karl Spirit**

**3-08 GP-83 VV+++**  
3225051939 100%RHA-NA  
Born 3/3/21  
3-00 365 25926 3.0 782 3.0 785  
4-09 125 10590 3.7 392 3.0 313 RIP  
Last test- 89 lbs 3.3%F 2.9%P  
SCC 303,000  
**Fresh 12/4/25**  
**Bred 5/10/26 to 138HO7823 Famous**

**Mil-R-Mor Karl**

144218501 4/26 PTA +1650GTPI  
+.37T -.41UDC +.26FLC 86%R  
Aftershock X VG-85 Lee

**Zehrview Revolver Sport**

**6-05 VG-87 VV+VV 3127419725**  
2-02 305 17920 3.4 618 3.0 532  
5-00 206 12110 4.2 509 2.9 456  
Sire: Zehrview Atwood Revolver

**2nd Dam:**

**Zehrview Talent Spot-ET**

**VG-85 +VV+V**  
2-00 305 14320 3.2 465 3.4 480  
3-04 305 14540 3.4 499 3.1 453  
4-08 305 19260 3.4 649 2;9 558

**3rd Dam: (Pictured above)**

**Zehrview Mat Iris**

**EX-91,2E EEVVE**  
5-03 305 22430 3.5 782 2.9 646  
*\*All-American Jr 2yr-old 2004  
\*All-American Spr Yrlng 2003  
\*1st Spring Yearling & Res. Jr  
Champion Int'l Holstein Show 2003*

**4th Dam:**

**Zehrview Lindy Ink-TW**

**VG-85 V+VVV**  
6-01 303 24050 3.8 919 3.2 759  
Lifetime 111490 3.1 3457 3.1 3426



**Stelbro Renita Ranger-RED  
EX-94,3E EEEEE**

*\*4X Red & White All-American  
(Descendants sell as Lots 54-57)*



**Zehrview Army Sweetpea-RED  
UG-85 +UUU+**

*\*1st Spring Calf IL State Fair 2023  
(She sells as Lot 54)*

**LOT 54**

**Zehrview Army Sweetpea-RED**

3-01 VG-85 +VVV+  
3263438664 99%RHA-I  
Born 3/4/23  
2-04 274 20945 3.5 724 2.9 597 RIP  
Last test- 53 lbs 4.2%F 3.0%P  
Fresh 7/8/25  
Bred 4/18/26 to 7HO16104 Eye Candy

**Winnings include:**

- \*1st Spring Calf IL State Fair 2023*
- \*1st Spring Calf Jr M-E R&W Jr Show 2023*
- \*2nd Spring Calf M-E R&W Open 2023*

**Golden-Oaks Srg Army-RED-ET**  
3139216953 4/26 PTA +1961GTPI  
+2.25T +1.55UDC +1.09FLC 83%R  
Surge X EX-92,2E Destry

**Zehrview Rainy Suave\*RC**  
6-05 EX-90 EVEVE 3144607374  
2-11 305 16760 3.6 602 3.3 554  
4-08 246 17440 3.6 625 3.1 546  
5-08 305 22540 3.4 772 3.2 715  
Sire: Rainyridge Barnie-ET

**2nd Dam:**  
Schluter Sammie Lee-RED-ET  
2-06 305 11820 4.2 499 3.5 410

**3rd Dam:**  
Helcrest Destry Sarha Lee-RED  
EX-90 EVVEE  
4-03 305 30460 4.3 1307 3.1 954

**4th Dam:**  
Stoneden Reddevil Alana-RED-ET  
VG-85-CAN  
3-09 329 19412 3.9 758 3.4 650

**5th Dam:**  
Stoneden Rebecca Ayre  
VG-86-CAN VG-MS  
5-01 365 29568 3.4 1012 3.1 908  
Lifetime 105755 3.5 3677 3.2 3419

**6th Dam:**  
Stelbro Elegant Rebecca  
VG-86-CAN 86-MS  
4-01 365 31149 3.5 1091 3.2 950

**7th Dam: (Pictured above)**  
Stelbro Renita Ranger-RED  
EX-94,3E EEEEE  
7-04 365 29760 3.9 1168 2.9 868  
*\*All-American R&W Aged Cow 2001  
\*Unanimous All-Am R&W 4yr-old 1998  
\*All-American R&W Sr 2yr-old 1996  
\*All-American R&W Winter Yrlng 1995*

**6th Dam:**  
Stelbro Enhancer Ripple-RED  
EX-4E-CAN  
7-02 365 31504 4.6 1440 3.3 1027  
9-05 365 31552 4.5 1413 3.2 1011  
Lifetime 202165 4.5 9112 3.4 6868

**7th Dam:**  
Stelbro Regal Rene EX-3E-CAN  
8-09 364 21874 4.1 893 3.7 805  
Lifetime 134725 3.9 5190 3.4 4619

**8th Dam:**  
Stelbro Astro Starbrite VG-CAN

**9th Dam:** Longstate Star VG-CAN

**LOT 55**

**Zehrview Army Sleek\*RC**

4-10 EX-91 EVEVE  
3225051947 99%RHA-I  
Born 6/3/21  
2-00 365 23711 3.7 869 3.1 723  
3-09 359 19824 3.7 732 3.5 697  
Fresh 4/3/26  
Bred 5/14/26 to  
799HO127 Hurricaneurricane (sexed)



**Zehrview Creed Suade**  
*\*5th Spring Calf M-E Fall National 2025*  
(She sells as Lot 56)

**LOT 56 #413**

**Zehrview Creed Suade**

3287558433 99%RHA-I  
Born 3/10/25

**Winnings include:**

- \*1st Spring Calf IL State Fair 2025
  - \*1st Spring Calf M-E Fall Nat'l Jr Show 2025
  - \*5th Spring Calf M-E Fall Nat'l 2025
- (Lot 56 pictured above)

**LOT 57**

**Zehrview Famous Satin**

3287558464 99%RHA-I  
Born 4/3/26

**Sire of Lot 56:**

**Zehrview Tatoo Creed**  
3144607442 4/26 PTA +1933PTPI  
Tatoo X Avalanche

**Sire of Lot 57:**

**Zehrview T-Storm Famous**  
3263438690 (Thunder Storm X  
EX-93 Diamondback- sells as Lot 2)

**Dam of Lots 56 & 57:**

**Zehrview Army Sleek\*RC**  
4-10 EX-91 EVEVE 3225051947  
2-00 365 23711 3.7 869 3.1 723  
3-09 359 19824 3.7 732 3.5 697  
Sire: Golden-Oaks Srg Army-RED-ET

**2nd Dam:**  
Zehrview Rainy Suave\*RC  
EX-90 EVEVE  
2-11 305 16760 3.6 602 3.3 554  
4-08 246 17440 3.6 625 3.1 546  
5-08 305 22540 3.4 772 3.2 715

**3rd Dam:** Schluter Sammie Lee-RED-ET

**4th Dam:**  
Helmcrest Destry Sarha Lee-RED  
EX-90 EVVEE  
4-03 305 30460 4.3 1307 3.1 954

**5th Dam:**  
Stoneden Reddevil Alana-RED-ET  
VG-85-CAN  
3-09 329 19412 3.9 758 3.4 650

**6th Dam:** Stoneden Rebecca Ayre  
VG-86-CAN VG-MS  
5-01 365 29568 3.4 1012 3.1 908  
Lifetime 105755 3.5 3677 3.2 3419

**7th Dam:** Stelbro Elegant Rebecca  
VG-86-CAN 86-MS  
4-01 365 31149 3.5 1091 3.2 950

**8th Dam: (Pictured above)**  
Stelbro Renita Ranger-RED  
EX-94,3E EEEEE  
7-04 365 29760 3.9 1168 2.9 868  
\*All-American R&W Aged Cow 2001  
\*Unanimous All-Am R&W 4yr-old 1998  
\*All-American R&W Sr 2yr-old 1996  
\*All-American R&W Winter Yrlng 1995

**9th Dam:** Stelbro Enhancer Ripple-RED  
EX-4E-CAN  
7-02 365 31504 4.6 1440 3.3 1027  
9-05 365 31552 4.5 1413 3.2 1011  
Lifetime 202165 4.5 9112 3.4 6868

**10th Dam:**  
Stelbro Regal Rene EX-3E-CAN  
8-09 364 21874 4.1 893 3.7 805  
Lifetime 134725 3.9 5190 3.4 4619

**11th Dam:**  
Stelbro Astro Starbrite VG-CAN

**12th Dam:** Longstate Star VG-CAN



**Ms Durchan Lady Allana-ET  
EX-95,2E EEEEE DOM**

*\*All-American Milking Yearling 2007  
(5th or 6th Dam of Lots 58-61)*



**Rock-Home Gldwyn Allana-ET  
EX-93 VEEEE**

*\*Res. Sr Champ South Spring Nat'l 2014 & 2015  
(3rd or 4th Dam of Lots 58-61)*

**LOT 58**

**Zehr-JMK Army Alba\*RC**

3-11 VG-88 VEVVV

3225051934 99%RHA-I

Born 12/27/20

2-05 365 18623 3.9 721 3.6 664

3-08 365 16811 4.1 688 3.9 659

**\*DRY COW\***

**Due 6/26/26 to 138HO7823 Famous**

**Golden-Oaks Srg Army-RED-ET**

3139216953 4/26 PTA +1961GTPI

+2.25T+1.55UDC+1.09FLC 83%R

Surge X EX-92,2E Destry

**Zehr-JMK Addiction Alamo\*RC**

3-07 VG-87 VVV+V 3144607346

3-02 305 15100 4.5 675 3.8 571

5-00 305 13450 5.1 678 3.7 494

Sire: Mr Ansly Addiction-P-RED-ET

**2nd Dam:**

**Zehr-JMK Damion Amarillo**

**EX-92 EEEEE**

2-07 305 17030 3.8 647 3.5 592

4-00 305 17290 3.7 646 3.3 569

6-00 305 17910 3.4 602 3.2 579

7-11 305 18860 3.6 680 3.1 585

Lifetime 102200 3.8 3874 3.4 3493

**3rd Dam: (Pictured above)**

**Rock-Home Gldwyn Allana-ET**

**EX-93 VEEEE**

3-01 305 24230 4.2 1015 3.4 831

*\*1st 4yr-old & Res. Sr Champion Southern*

*Spring Nat'l 2015*

*\*1st Sr 3yr-old & Res. Sr Champion South-*

*ern Spring Nat'l 2014*

**4th Dam: Ladys-Manor Jas Alexee-ET**

**VG-87 EVV+V**

**5th Dam: (Pictured above)**

**Ms Durchan Lady Allan**

**EX-95,2E EEEEE DOM**

3-07 365 40850 4.4 1793 3.3 1349

5-07 365 39050 4.4 1721 3.3 1291

Lifetime 126420 4.2 5362 3.4 4305

*\*Unanimous All-Am Fall Yrlng in Milk '07*

**6th Dam: Coldsprings Dur Chan 109-ET**

**EX-95,2E EEEEE DOM**

6-04 365 41850 4.3 1784 3.1 1292

Lifetime 130510 3.6 4695 3.1 4087

*\*All-American 4yr-old Cow 2004*

*\*Res. All-American Aged Cow 2007*

*\*HM All-American 5yr-old Cow 2005*

**7th Dam: C Bermaska Starbuck Chancel**

**VG-89 GMD-DOM**

2-07 365 28400 4.3 1230 3.5 999

*\*Res. All-Time All-Am Sr 2yr-old*

*\*All-Am & All-Canada Sr 2yr-old '92*

*\*All-Am & All-Canada Sr Yearling '91*

*\*All-Canada Sr. Calf 1990*

**8th Dam: VG-87-CAN**

**9th Dam: VG-88 VEEV**

**10th Dam: VG-86 by Elevation**

**LOT 59**

**Zehr-JMK Army Aladdin\*RC**

3263438655 99%RHA-I

Born 10/15/22

2-08 271 16590 3.9 645 3.3 553

**\*DRY COW\***

**Due 6/3/26 to 799HO071 Major**

## LOT 60 #403

### Zehrview Alleyoop Albany

3287558423 99%RHA-I

Born 9/7/24

Bred to 138HO7956 Fireball

## LOT 61 #403

### Ms Zehrview D-Back Abilene

2-10 GP-83 ++GGV

3263438681 99%RHA-I

Born 6/2/23

2-05 128 7781 3.7 289 3.1 245 RIP

Last test- 63 lbs 4.0%F 3.1%P

SCC 25,000

Fresh 12/1/25

Bred 4/21/26 to 799HO089 Direct

#### Sire of Lot 60:

#### Brabantdale Alleyoop-ET

42002534C 4/26 PTA +2365GTPI

+1153M +3.38T +1.92UDC +1.20FLC

Crushabull X Rambo

#### Sire of Lot 61:

#### Mr D Apple Diamondback\*RC

3013721049 4/26 PTA +1954GTPI

+1.77T +.96UDC +1.21FLC 99%R

Doorman X EX-94,2E Talent

#### Dam of Lots 60 & 61:

#### Zehr-JMK Army Alba\*RC

3-11 VG-88 VEVVV 3225051934

2-05 365 18623 3.9 721 3.6 664

3-08 365 16811 4.1 688 3.9 659

Sire: Golden-Oaks Srg Army-RED-ET

\*She sells as Lot 58

#### 2nd Dam: Zehr-JMK Addiction Alamo\*RC VG-87 VVV+V

3-02 305 15100 4.5 675 3.8 571

5-00 305 13450 5.1 678 3.7 494

#### 3rd Dam: Zehr-JMK Damion Amarillo

EX-92 EEEEE

7-11 305 18860 3.6 680 3.1 585

Lifetime 102200 3.8 3874 3.4 3493

#### 4th Dam: (Pictured above)

Rock-Home Gldwyn Allana-ET

EX-93 VEEEEE

3-01 305 24230 4.2 1015 3.4 831

\*1st 4yr-old & Res. Sr Champion Southern  
Spring Nat'l 2015

\*1st Sr 3yr-old & Res. Sr Champion Southern  
Spring Nat'l 2014

#### 5th Dam: Ladys-Manor Jas Alexee-ET

VG-87 EVV+V

#### 6th Dam: (Pictured above)

Ms Durchan Lady Allan

EX-95,2E EEEEE DOM

3-07 365 40850 4.4 1793 3.3 1349

5-07 365 39050 4.4 1721 3.3 1291

Lifetime 126420 4.2 5362 3.4 4305

\*Unanimous All-Am Fall Yrlng in Milk '07

#### 7th Dam: Coldsprings Dur Chan 109-ET

EX-95,2E EEEEE DOM

6-04 365 41850 4.3 1784 3.1 1292

Lifetime 130510 3.6 4695 3.1 4087

\*All-American 4yr-old Cow 2004

\*Res. All-American Aged Cow 2007

\*HM All-American 5yr-old Cow 2005

#### 8th Dam: C Bermaska Starbuck Chancel

VG-89 GMD-DOM

2-07 365 28400 4.3 1230 3.5 999

\*Res. All-Time All-Am Sr 2yr-old

\*All-Am & All-Canada Sr 2yr-old '92

\*All-Am & All-Canada Sr Yearling '91

\*All-Canada Sr. Calf 1990

9th thru 11th Dams all VG

## LOT 62

### Zehrview Army Silky\*RC

3-01 VG-85 ++VVV

3263438669 99%RHA-I

Born 3/3/23

2-09 122 10194 4.4 453 2.8 283 RIP

Last test- 68 lbs 4.3%F 3.1%P

SCC 57,000

Fresh 10/7/25

Bred 2/16/26, Due 11/21/26 to

799HO051 Destination

#### Golden-Oaks Srg Army-RED-ET

3139216953 4/26 PTA +1961GTPI

+2.25T +1.55UDC +1.09FLC 83%R

Surge X EX-92,2E Destry

#### Stone-Fort Shot Madlin

10-01 EX-90 EE+EV 3013444714

2-07 305 21600 3.7 807 3.0 645

5-04 305 19810 4.6 914 3.2 628

7-03 305 22900 4.7 1082 3.1 702

9-00 305 24510 4.5 1111 2.8 696

Lifetime 179240 4.4 7936 3.2 5770

Sire: Lincoln-Hill Shot Laser-ET

#### 2nd Dam:

#### Stone-Fort Atwood Malinda

2-03 305 13530 3.9 532 3.1 418

#### 3rd Dam:

#### Zehrview Rhyme Malinde

3-02 293 16250 3.6 590 3.0 485

#### 4th Dam:

#### Zehrview Bango Melanie-ET

VG-89 EVVVV

5-09 292 14910 3.1 455 2.9 439

#### 5th Dam:

#### C Jerrann Astro Maggie

EX-94,3E EEEEE

7-07 365 24120 3.7 896 3.0 712

## LOT 63

### Zehrview Famous Sugar

3287558450 99%RHA-I

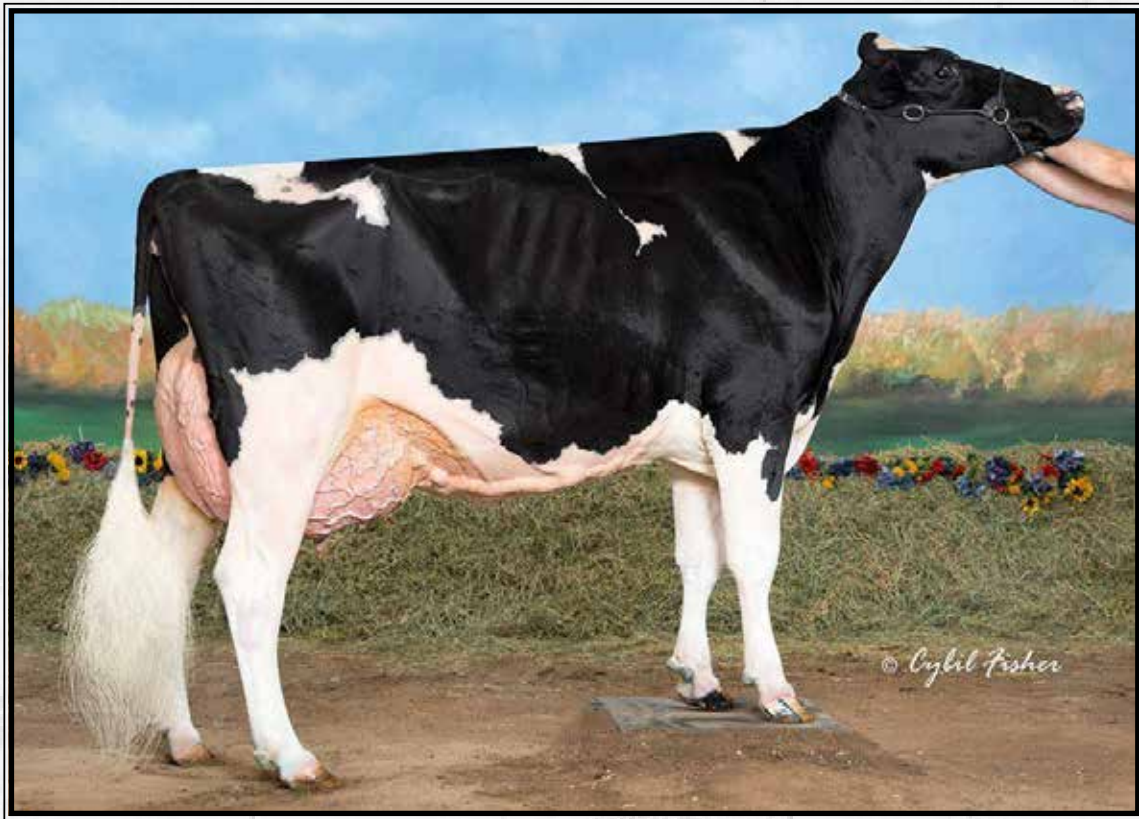
Born 12/4/25

Sire: Zehrview T-Storm Famous

3263438690 (Thunder Storm X

EX-93 Diamondback- sells as Lot 2)

Dam: Silky (Sells as Lot 62)



**Indianhead Redcarpet Tia-ET EX-94,3E EEEEE**

*\*1st 5yr-old & Res. Grand Champion Midwest Fall Nat'l 2015  
(4th Dam of Lot 64)*

**LOT 64 #412**

**Zehrview Master Trix**

3287558432 99%RHA-I  
Born 12/8/24

**Golden-Oaks Master-ET**

3139216917 4/26 PTA +1986GTPI  
+2.96T +1.93UDC +1.11FLC 98%R  
Avalanche X EX-90 Doorman

**Clearfield Unix Temper**

4-11 EX-90 VVEEE 3205617666  
1-10 305 14980 3.6 535 3.1 469  
3-01 305 19140 3.9 740 3.3 640  
4-04 305 21290 3.9 826 2.9 625  
Sire: Croteau Lesperron Unix-ET

**2nd Dam:**

**Indianhead Doorman Tempt-Me  
VG-88 EVE+V**

2-03 328 20300 4.6 942 3.6 733  
3-02 344 23860 4.6 1108 3.7 886

**3rd Dam:**

**Indianhead Apple Tart\*RC  
VG-85 VVV+V**

2-01 305 23030 3.8 877 3.2 730

**4th Dam: (Pictured above)**

**Indianhead Redcarpet Tia-ET  
EX-94,3E EEEEE**

4-07 365 38040 4.9 1880 3.7 1392  
6-00 365 39980 4.8 1939 3.5 1411  
7-08 365 38760 4.7 1840 3.23 1256  
Lifetime 218800 5.0 10837 3.6 7895

**\*5th 5yr-old WDE 2015**

**\*1st 5yr-old & Res. Grand Champion  
Midwest Fall Nat'l 2015**

**5th Dam:**

**Indianhead Milan Tina-ET  
EX-92,3E EEVVE**

5-01 365 36490 3.8 1394 2.9 1074  
7-10 361 37460 3.6 1358 3.0 1108  
Lifetime 261950 3.9 10188 3.0 7970

**Maternal sister:**

**Ernest-Anthony SD Tobi-ET EX-96,3E**

6-00 365 44090 5.0 2191 3.4 1506

**\*All-Can & Res All-Am 5yr-old 2001**

**6th Dam: C Alanvale Inspiration Tina  
EX-95,2E GMD-DOM**

6-00 365 36010 5.1 1829 3.3 1184  
Lifetime 136010 4.5 6122 3.3 4555

**\*Res. All-Am Aged Cow 1995 & 1996**

**\*All-Can Jr 3yr-old 1992**

**\*HM All-Am Jr 2yr-old 1991**

**7th Dam: Alanvale Puget Anetia  
VG-85-CAN**

Lifetime 203901 4.2 8503 3.5 5600



**Zehrview Army Diamond-RED  
UG-88 UUUUU**

*\*1st 4yr-old & R. Grand IL State Fair 2025  
(She sells as Lot 65)*

**LOT 65**

**Zehrview Army Diamond-RED**

4-06 VG-88 VVVVV

3225051932 99%RHA-I

Born 12/4/20

3-03 328 17879 3.0 544 3.1 548

4-02 365 20655 3.6 742 3.2 653

Bred 4/20/26 to 138HO7823 Famous

*\*1st 4yr-old IL State Fair 2025*

*\*Res. Grand Champ IL State Fair 2025*

**Golden-Oaks Srg Army-RED-ET**

3139216953 4/26 PTA +1961GTPI

+2.25T +1.55UDC +1.09FLC 83%R

Surge X EX-92,2E Destry

**Zehrview Defiant Dalia**

2-11 GP-84 VVVVG 3144607369

2-06 305 14140 3.7 524 3.1 437

4-03 305 15410 4.0 610 3.3 507

Sire: Scientific B Defiant-ET\*RC

**2nd Dam:**

**Zehrview Sanchez Design-2**

VG-85 V+EV+

2-00 305 15840 3.6 568 3.0 469

3-05 305 19200 3.7 713 3.0 582

4-06 305 19570 3.6 712 2.7 537

6-06 305 20180 3.7 750 2.7 557

**3rd Dam:**

**Zehrview Simba Designn**

**4th Dam:**

**Zehrview Mat Desiree**

VG-89 VVVVE

2-11 305 17870 3.4 603 3.1 553

**LOT 66**

**Zehrview Phoenix Diva**

3-07 GP-83 V+VV+

3225051969 100%RHA-NA

Born 9/4/22

2-07 365 22555 3.4 775 3.1 701

Last test- 58 lbs 3.8%F 3.5%P

SCC 348,000

Bred 2/17/26, Due 11/23/26 to

138HO7956 Fireball

**Windy-Knoll-View Phoenix-ET**

62968892 4/26 PTA +1858GTPI

Goldwyn X EX-95,3E All-Am Outside

**Zehrview Defiant Dalia**

2-11 GP-84 VVVVG 3144607369

2-06 305 14140 3.7 524 3.1 437

4-03 305 15410 4.0 610 3.3 507

Sire: Scientific B Defiant-ET\*RC

**2nd Dam:**

**Zehrview Sanchez Design-2**

VG-85 V+EV+

2-00 305 15840 3.6 568 3.0 469

3-05 305 19200 3.7 713 3.0 582

4-06 305 19570 3.6 712 2.7 537

6-06 305 20180 3.7 750 2.7 557

**3rd Dam:**

**Zehrview Simba Designn**

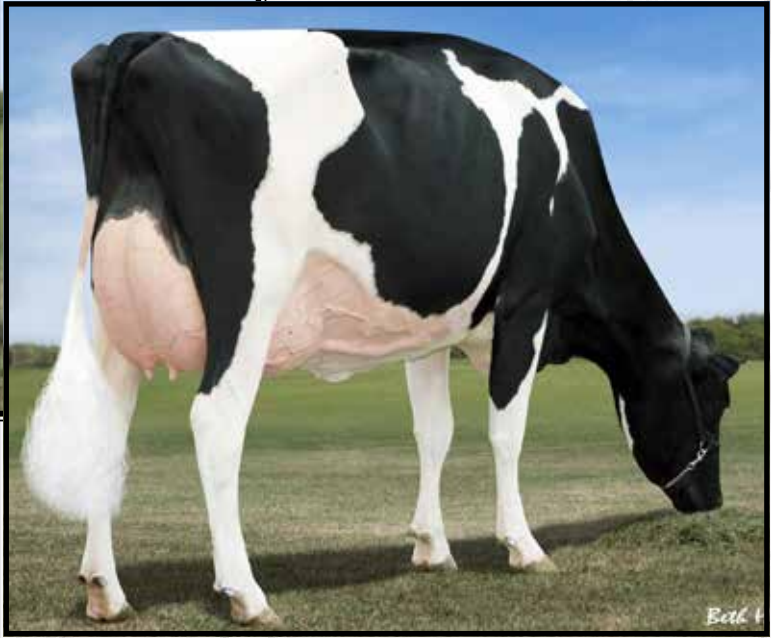
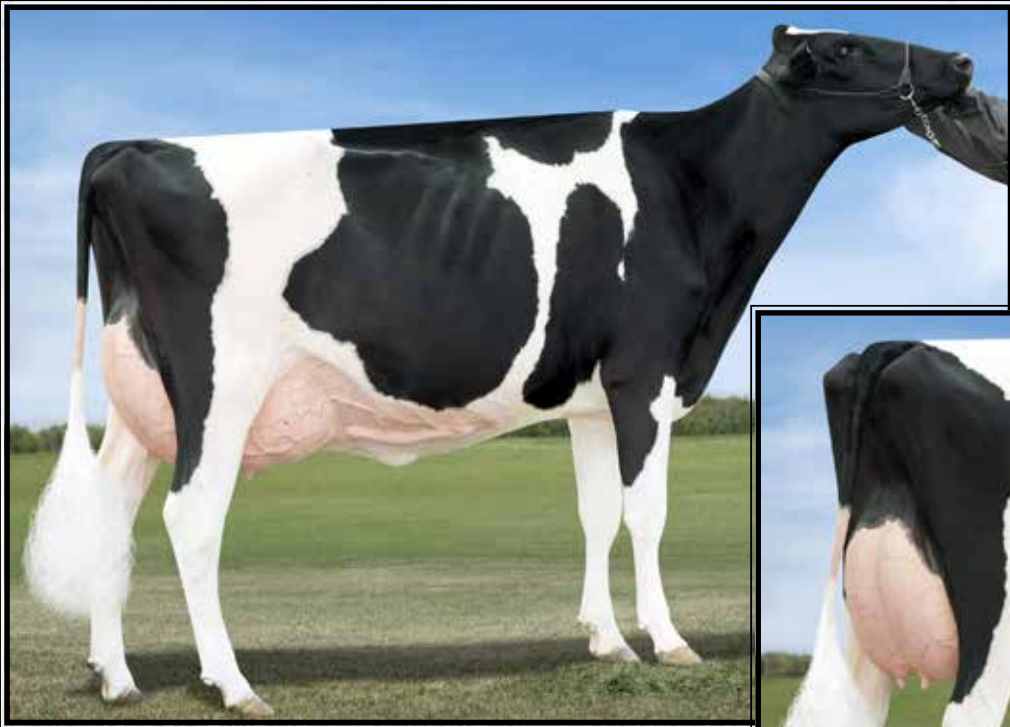
**4th Dam:**

**Zehrview Mat Desiree**

VG-89 VVVVE

2-11 305 17870 3.4 603 3.1 553

**LOT 67 #417**  
**Zehrview Eye Candy Dior**  
 3287558437 99%RHA-I  
 Born 4/4/25  
**Sire: MB-Luckylady Eye Candy-ET**  
 3234629820 4/26 PTA +2474GTPI  
 +3.01T +2.09UDC +1.66FLC 98%R  
 Lambda X EX-95 3X All-Am Unix  
**Dam: Diva (Sells as Lot 66)**



**Coolea Farms Sanchez Liza-ET**  
**EX-93,2E EEEEE**

*\*HM Int. Champion IL State Championship Show 2013*  
*(3rd Dam of Lot 68)*

## LOT 68

### Clearfield Unix Lyrical

3-09 VG-86 V+++V  
3205617665 99%RHA-I  
Born 7/26/20  
1-11 365 16879 4.0 673 3.3 558  
3-01 365 23004 3.7 860 3.4 783  
5-01 210 16441 3.6 598 3.2 527 RIP  
Last test- 70 lbs 5.0%F 3.6%P  
SCC 29,000  
Fresh 9/10/25  
Bred 4/21/26 to Angus

### Croteau Lesperron Unix-ET

107567492 4/26 PTA +2382GTPI  
+186M +1.51T +1.14UDC +.01FLC  
Numero Uno X VG-85 Domain

### Clearfield Cindr Lyric

72825941  
2-02 261 20310 3.6 740 3.3 671  
Sire: KH Cinderdoor-ET

### 2nd Dam: MD-Maple-Lawn LZ Lyrical-ET VG-85 VVVV+

2-02 341 23010 3.1 714 3.0 690  
3-03 247 24700 3.0 736 3.0 734

### 3rd Dam: (Pictured above) Coolea Farms Sanchez Liza-ET EX-93,2E EEEEE

2-03 365 31420 3.9 1233 3.4 1065  
3-07 365 34451 3.5 1206 3.2 1116  
6-09 305 34070 2.7 909 3.2 1086  
8-02 305 31840 3.3 1059 3.1 997  
Lifetime 164530 3.4 5652 3.3 5377

*\*1st Sr 2yr-old & HM Int. Champion Illinois State Championship Show 2013*

*\*1st Sr 2yr-old IL State Fair 2013*

### 4th Dam:

**Calbrett Goldwyn Liza-ET VG-88-CAN**  
2-04 365 32165 4.1 1327 3.5 1130

*\*Sold for \$177,000*

### Full sister:

**Calbrett Goldwyn Layla-ET EX-96,2E**  
6-04 365 42046 3.8 1603 3.3 1402

*\*All-American Aged Cow 2015*

### 5th Dam:

**Lylehaven Lila Z EX-94-CAN 96-MS**  
4-05 365 49101 4.0 1960 3.5 1695

*\*She sold for \$1.15M in '05 Triple Crown*

*\*All-Canadian Jr 2yr-old 2004*

*\*All-Canadian Jr Yearling 2003*

*\*Nom. All-Canadian Jr Calf 2002*

*\*Nom. All-Canadian 5yr-old 2007*

*\*Nom. All-American Jr. Yearling 2003*

*\*HM All-Canadian 4yr-old 2006*

**6th Dam: Lylehaven Form Laura-ET EX-94,3E EEEEE**

8-08 365 39320 3.9 1529 3.1 1218

Lifetime 195690 4.0 7731 3.1 6015

*\*Res. All-Canadian Jr 3yr-old 2002*

*\*HHM All-Am 4yr-old 2003*

**7th Dam: Thiersant Lili Starbuck-ET EX-94,5E EEVEE**

9-11 365 30910 4.5 1385 3.1 965

Lifetime 238806 4.7 11291 3.4 8124



**Silvermine Adv Tally-RED EX-93,2E EE+EE**

*\*Un. All-Am & All-Can R&W Jr 2yr-old 2009  
(3rd Dam of Lot 69)*

**LOT 69**

**Zehrview D-Back Tango\*RC**

3-01 VG-85 VVVVV  
3263438674 99%RHA-I  
Born 3/8/23  
2-03 A 278 18055 3.7 671 3.4 608  
**\*DRY COW\***  
Due 7/8/26 to 200HO12376 Bullseye

**Mr D Apple Diamondback\*RC**  
3013721049 4/26 PTA +1954GTPI  
+1.77T +.96UDC +1.21FLC 99%R  
Doorman X EX-94,2E Talent

**Cloverhill Al Taycan-RED-ET**  
2-06 VG-85 VVV+V 3235760544  
2-00 305 14670 4.3 632 3.4 494  
Sire: Farnear Altitude-RED-ET

**2nd Dam:**  
Milksource A Trinket-RED-ET  
VG-87 VVVVV  
2-03 269 19490 4.5 876 3.2 633  
3-01 305 16460 4.0 660 3.1 512  
**Maternal sister:**  
Milksource Dtr Tammy-RED  
EX-93 EEEEE  
*\*Grand Champ WDE Jr R&W 2016  
\*Nom. All-Am R&W 4yr-old 2016*

**3rd Dam: (Pictured above)**  
Silvermine Adv Tally-RED-ET  
EX-93,2E EE+EE  
3-05 365 32920 4.3 1426 3.4 1104  
5-05 365 38700 4.2 1621 3.4 1327  
Lifetime 108890 4.3 4730 3.5 2963  
*\*HHM All-Am R&W 4yr-old 2011  
\*Nom. 2010 R&W Cow of the Year  
\*Nom. All-Am R&W Sr 3yr-old 2010  
\*Un. All-Am R&W Sr 2yr-old 2009  
\*All-Can R&W Sr 2yr-old 2009*

**4th Dam:**  
Spungold R-M Tammy-RED-ET  
EX-93,2E EEEEE GMD  
3-04 365 42690 3.4 1446 2.9 1235  
5-03 305 39110 3.2 1255 2.8 1100  
Lifetime 135110 3.3 4459 2.9 3951  
**Maternal sister:**  
Spungold Tahoe-RED EX-93  
3-03 365 34670 4.1 1420 3.0 1042  
*\*All-Am R&W Sr 3yr-old 2002  
\*All-Am R&W Sr 2yr-old 2001  
\*Supreme Champ WDE Futurity 2002*

**5th Dam:**  
Medovue Leader Lottie-RED  
VG-85 VV+++ GMD  
4-06 365 37670 3.9 1471 3.1 1178  
Lifetime 114310 3.8 4384 3.4 3843



**Zehr-Hartman Bango Madge-ET  
EX-94,3E EEEEE**

*\*Res. All-American Summer Yrlng 2001  
(4th Dam of Lot 70)*

**LOT 70**

**Ms Zehrview Master Toby**

3-09 VG-87 EVV+V  
3225051937 99%RHA-I  
Born 2/15/21  
3-06 365 27190 3.1 838 3.2 875  
**\*DRY COW\***

Due 8/8/26 to 138HO7823 Famous

**Golden-Oaks Master-ET**

3139216917 4/26 PTA +1986GTPI  
+2.96T +1.93UDC +1.11FLC 98%R  
Avalanche X EX-90 Doorman

**Zehrview D-Back Teal**

3144607362  
2-11 305 13430 3.6 483 3.4 460  
Sire: Mr D Apple Diamondback\*RC

**2nd Dam:**

**Zehrview Freemont Tereasa  
VG-88 VEE+V**

2-02 305 17280 3.4 589 3.5 602  
3-06 305 21500 3.5 757 3.3 712  
4-10 305 20760 3.1 644 3.3 688

**3rd Dam:**

**Kost-Zehr-Curn Teri-ET  
VG-85 VVV++**

2-03 305 15580 3.1 485 3.2 502

**4th Dam: (Pictured above)**

**Zehr-Hartman Bango Madge-ET  
EX-94,3E EEEEE**

5-04 305 29680 4.0 1197 2.8 840  
Lifetime 116270 4.0 4656 3.1 3578  
*\*Res. All-Am Summ Yrlng 2001  
\*1st Dry Cow WDE 2002*

**5th Dam:**

**C Jerrann Astro Maggie  
EX-94,3E EEEEE**

7-07 365 24120 3.7 896 3.0 712

**LOT 71**

**Zehrview Army Majic-RED**

2-06 VG-87 V+VEV  
3263438660 99%RHA-I  
Born 12/3/22  
2-02 365 17010 4.0 682 3.3 568  
**\*DRY COW\***

Due 7/25/26 to 7HO13839 Tatoo

**Golden-Oaks Srg Army-RED-ET**

3139216953 4/26 PTA +1961GTPI  
+2.25T +1.55UDC +1.09FLC 83%R  
Surge X EX-92,2E Destry

**Zehrview Rainy Matrix**

6-06 VG-85 VV+V+ 3133091892  
3-00 305 19240 3.5 682 3.1 594  
3-11 305 13050 3.5 455 3.3 427  
5-08 305 19110 3.6 680 2.9 556  
7-03 305 17920 3.3 593 3.1 555  
Sire: Rainyridge Barnie-ET

**2nd Dam:**

**Zehrview Attic Mistreat  
GP-83 V++++**

2-01 305 15660 3.6 570 3.2 500  
3-03 305 20270 3.6 722 3.2 642  
4-06 305 16170 4.0 650 3.3 527

**3rd Dam: Zherview Rhyme Mistress**

**4th Dam Zehrview Simba Miss**

**5th Dam:**

**Zehrview Bango Missy-ET  
VG-86 VVV+V**

3-02 305 2000 2.9 582 2.8 557

**Full sister: (Pictured above)**

**Zehr-Hartman Bango Madge-ET  
EX-94,3E EEEEE**

5-04 305 29680 4.0 1197 2.8 840  
*\*Res. All-Am Summ Yrlng 2001  
\*1st Dry Cow WDE 2002*

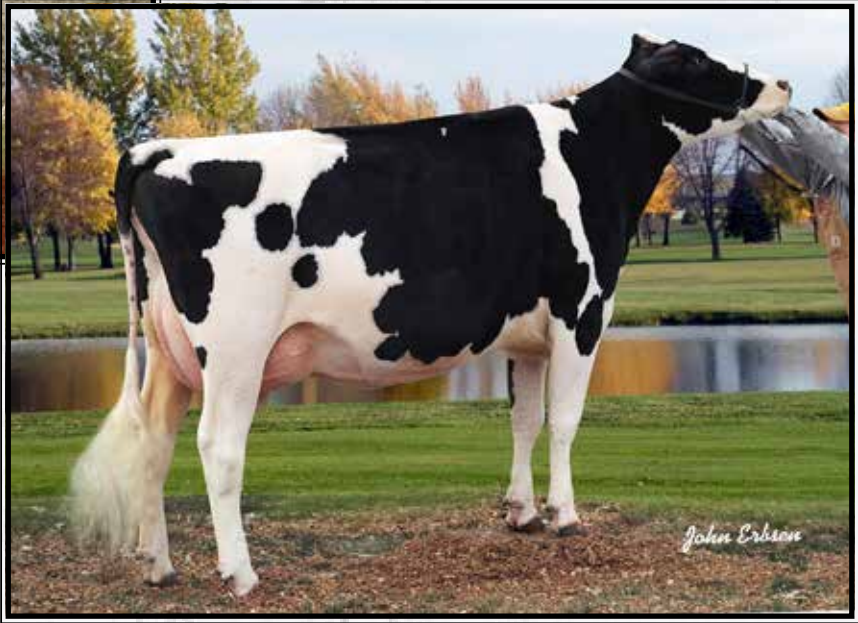
**6th Dam:**

**C Jerrann Astro Maggie  
EX-94,3E EEEEE**

7-07 365 24120 3.7 896 3.0 712



**Ms Kingstead Chief Adeen-ET**  
**EX-94,2E EEEEE DOM**  
 2X Nominated All-American  
 (5th Dam of Lots 72 & 73)



**Ms Leducd Add E**  
**EX-93,2E EEEVE**  
 3-08 365 23050 4.7 1079 3.6 838  
 (4th Dam of Lots 72 & 73)

**LOT 72**

**Ms Zehrview Army Audi\*RC**  
 3287558458 99%RHA-I  
 Born 3/12/26

**Golden-Oaks Srg Army-RED-ET**  
 3139216953 4/26 PTA +1961GTPI  
 +2.25T +1.55UDC +1.09FLC 83%R  
 Surge X EX-92,2E Destry

**2nd Dam:**  
 Indianhead Amusing-ET

**3rd Dam:**  
**Carrousel Durham Amy-ET**  
**EX-90,2E EEVEE**  
 3-04 355 27400 4.0 1106 3.2 883

**LOT 73**

**Ms Zehrview Army Adore\*RC**  
 3-01 GP-84 V+V++  
 3263438665 99%RHA-I  
 Born 3/3/23  
 2-03 281 16101 4.0 640 3.7 591 RIP  
 Last test- 55 lbs 5.0%F 4.1%P  
 SCC 20,000  
 Fresh 7/1/25  
 Bred 5/11/26 to Angus

**Ms Zehrview Vixen Ariel**  
**5-10 VG-86 EV++V 3144607428**  
 4-01 365 18473 3.8 706 3.2 595  
 5-04 365 23421 3.6 849 3.3 762  
 Sire: Smith-Crest Doorman Vixen

**4th Dam: (Pictured above)**  
**Ms Leducd Add E**  
**EX-93,2E EEEVE**  
 3-08 365 23050 4.7 1079 3.6 838

**5th Dam: (Pictured above)**  
**Ms Kingstead Chief Adeen-ET**  
**EX-94,2E EEEEE DOM**  
 3-05 310 30180 4.0 1209 3.4 1020  
 Lifetime 100760 4.0 4010 3.4 3458  
 \*Nom. All-American Jr 3yr-old 2000  
 \*Nom. All-American 4yr-old 2001  
 \*2X All-Am Produce w/ All-World Sis.

**Full sister to 3rd Dam (Adeen):**  
**Shoremar S Alicia-ET**  
**EX-97,3E EEEEE DOM**  
 6-10 365 35760 4.3 1544 3.4 1215  
 -Res. All-Am 125,000lb cow 2004  
 -All-World & Peoples Choice Winner '02  
 -HHM All-Time All-Am 5yr-old  
 -3X All-Canadian & 3X All-Am  
 -6X All-American Nominated

**6th Dam:**  
**C Aitkenbrae Starbuck Ada**  
**EX-94,2E EEEEE DOM**  
 5-06 356 30055 3.5 1043 3.3 992  
 Lifetime 137740 3.4 4747 3.2 4389  
 \*2X All-American produce of Dam  
 \*All-American Sr 3yr-old 1990

# LOT 74

## Heatherstone Persephoni-RED

6-02 EX-90 EEE+V

3149595083 99%RHA-I

Born 9/1/18

2-09 365 19810 4.1 807 3.4 669

4-04 365 18850 4.5 851 3.5 662

6-00 365 19939 4.1 821 3.7 729

7-06 25 1162 5.3 62 3.3 38 RIP

1st test- 55 lbs 4.8%F 2.9%P

SCC 187,000

Fresh 3/14/26

### Mr D Apple Diamondback\*RC

3013721049 4/26 PTA +1954GTPI

+1.77T +.96UDC +1.21FLC 99%R

Doorman X EX-94,2E Talent

### Heatherstone Perfection-RED

5-01 VG-85 VEE++ 70635821

2-01 365 25060 5.1 1283 3.7 918

3-05 365 29600 5.7 1678 3.7 1081

4-10 330 23090 5.1 1188 3.7 844

5-09 364 24760 5.8 1429 3.8 947

Lifetime 107450 5.5 5885 3.7 4005

Sire: Apples Absolute-RED-ET

### 2nd Dam:

#### Heatherstone Pasadena-RED

VG-87 VVV+V

2-00 318 19570 5.0 974 3.6 699

3-00 361 25150 5.1 1294 3.6 904

4-06 365 28550 5.6 1602 3.6 1023

6-03 314 25830 4.5 1174 3.4 884

Lifetime 103650 5.1 5290 3.6 3693

### 3rd Dam:

#### Heatherstone Parade\*RC

EX-93,2E EEEEE

3-00 289 25000 3.4 858 3.1 774

5-05 365 32300 3.9 1270 3.2 1027

# LOT 75

## Zehrview Army Hummer-RED

3287558462 99%RHA-I

Born 3/14/26

### Sire: Golden-Oaks Srg Army-RED

3139216953 4/26 PTA +1961GTPI

+2.25T +1.55UDC +1.09FLC 83%R

Surge X EX-92,2E Destry

Dam: Persephoni (Sells as Lot 74)

# LOT 76

## Zehrview Army Joker\*RC

2-10 VG-86 VVVVV

3263438678 99%RHA-I

Born 6/15/23

2-02 214 13074 3.8 499 3.2 417 RIP

Last test- 49 lbs 4.3%F 3.5%P

SCC 29,000

Fresh 9/6/25

Bred 5/9/26 to 138HO7823 Famous

### Golden-Oaks Srg Army-RED-ET

3139216953 4/26 PTA +1961GTPI

+2.25T +1.55UDC +1.09FLC 83%R

Surge X EX-92,2E Destry

### Bluff-Ridge Drman Jolene-TW

2-07 VG-86 VVVVV 3149284893

2-03 365 20938 3.6 759 3.2 671

Sire: Lirr Drew Dempsey

### 2nd Dam:

#### Bluff-Ridge Goldsun Jazzy

VG-87 VV++V

2-02 341 18640 4.1 759 3.5 647

3-03 203 14710 3.7 546 3.2 467

### 3rd Dam:

#### Bluff-Ridge Dundee Jaden

EX-91,2E EEVEE

5-02 365 25250 3.0 751 2.8 718

6-06 365 27490 3.4 933 3.0 821

Lifetime 110450 3.1 3476 2.9 3255

### 4th Dam:

#### Bluff-Ridge Brkr Janice-ET

EX-91,3E EEVEE

6-00 365 25400 3.0 768 2.9 748

Lifetime 155740 3.2 4989 3.0 4627

### 5th Dam:

#### Bluff-Ridge Strb Jackie 3

EX-92,2E EEVEE

8-09 365 28170 3.7 1035 2.9 812

Lifetime 102050 3.8 7719 3.0 6186

### 6th Dam:

#### Bluff-Ridgev Willow Jaybird

EX-91,4E EEEEE

6-04 365 27700 3.6 10012 2.8 770

Lifetime 212790 3.7 7827 2.9 6131

### 7th Dam: Zehrview Boots Jay-T

VG-86 +EVV

6-03 365 22100 3.5 777

Lifetime 1238340 3.5 4903

### 8th Dam: Zehrview Brett T Gay

VG-85 +EV+

5-07 365 27690 3.2 887

Lifetime 205280 3.1 6266

### 9th Dam: Zehrview Senator T Jay

EX-90,2E EEVE

10-11 365 22870 3.4 769

Lifetime 164320 3.5 5773

# LOT 77 #426

## Zehrview Footprint Java

3287558446 99%RHA-I

Born 9/6/25

### Sire: Oakfield Tstrk Footprint

3231711676 4/26 PTA +2062PTPI

+2.50T +.95UDC +.57FLC 86%R

Thunder Struck X Footloose EX-97 A-A

Dam: Army Joker (Sells as Lot 76)

## LOT 78

### Harvstar Denver Roxy-ET

3-10 VG-86 VVV+V

145430094 99%RHA-I

Born 6/2/22

2-00 365 20132 4.2 840 3.4 676

3-05 144 12378 4.1 510 3.3 404 RIP

Last test- 85 lbs 4.3%F 3.2%P

SCC 20,000

Fresh 11/15/25

Bred 2/16/26, Due 11/21/26 to

799HO71 Major &

799HO143 Private Jet

#### Brenland Denver

12074893C 4/26 PTA +2112GTPI

+1.82T +.53UDC +.21FLC 99%R

High Octane X EX-90 Doorman

#### Ocean-View Shottle Ripley

5-02 VG-88 EEV+V 142183340

2-07 365 32060 3.5 1122 3.0 955

3-09 324 39450 4.3 1695 2.9 1101

4-08 293 28500 4.4 1264 2.8 791

Lifetime 100100 4.1 4085 2.8 2850

Sire: Picston Shottle-ET

#### 2nd Dam:

Dun-Did Atlas Rouge

EX-94,2E EEEEE

2-04 246 14040 4.0 564 3.0 418

3-04 365 36060 3.7 1348 3.1 1131

4-09 280 24520 4.1 1000 3.1 766

5-09 365 31330 3.5 1107 3.1 979

7-00 305 28580 3.2 905 2.9 823

Lifetime 147140 3.7 5476 3.1 4577

#### 3rd Dam:

Dun-Did Juror Raven

EX-90 EEEVE

5-06 365 27250 3.8 1030 3.1 842

Lifetime 114810 4.0 4626 3.0 3409

#### 4th Dam:

Dun-Did TT Razzmatazz-ET\*RC

EX-92,2E EEEEE

8-09 365 28380 4.1 1174 3.1 884

#### 5th Dam:

Dun-Did Senator Reba

EX-93 EEEE DOM

4-07 305 19630 4.0 788 3.0 588

\*Res. All-American Aged Cow 1994

#### 6th Dam:

C Longlayne Admiral Robby

EX-92,2E EEEE

5-10 305 22100 3.8 832 3.0 653

#### 7th Dam:

Longlayne Baronet Robin

VG-85-CAN 86-MS

7-03 365 23181 3.9 913

## LOT 79

### Harvstar Believe Regina\*PO

145807322 99%RHA-I

Born 6/5/24

Due 6/15/26 to 799HO052 Alpha\*RC

Sire: Aija Believe-P-ET\*RC

13486161C 4/26 PTA +2265GTPI

+2.39T +1.57UDC +1.09FLC 97%R

Mirand Z VG-85 Crush

Dam: Regina (Sells as Lot 78)

## LOT 80

### Harvstar Goldwyn Rebel-ET

2-10 GP-81 +++++

145664752 99%RHA-I

Born 6/10/23

2-02 215 14779 3.2 469 2.8 410 RIP

Last test- 70 lbs 3.5%F 3.1%P

SCC 57,000

Fresh 9/5/25

Due 11/18/26 to

138HO7956 Fireball & Angus

#### Braeland Goldwyn

10705608C 4/26 PTA +1957GTPI

+4.9T -.22UDC +.72FLC 99%R

James X VG-86 James

#### Ocean-View Shottle Ripley

5-02 VG-88 EEV+V 142183340

2-07 365 32060 3.5 1122 3.0 955

3-09 324 39450 4.3 1695 2.9 1101

4-08 293 28500 4.4 1264 2.8 791

Lifetime 100100 4.1 4085 2.8 2850

Sire: Picston Shottle-ET

#### 2nd Dam:

Dun-Did Atlas Rouge

EX-94,2E EEEEE

2-04 246 14040 4.0 564 3.0 418

3-04 365 36060 3.7 1348 3.1 1131

4-09 280 24520 4.1 1000 3.1 766

5-09 365 31330 3.5 1107 3.1 979

7-00 305 28580 3.2 905 2.9 823

Lifetime 147140 3.7 5476 3.1 4577

#### 3rd Dam:

Dun-Did Juror Raven

EX-90 EEEVE

5-06 365 27250 3.8 1030 3.1 842

Lifetime 114810 4.0 4626 3.0 3409

#### 4th Dam:

Dun-Did TT Razzmatazz-ET\*RC

EX-92,2E EEEEE

8-09 365 28380 4.1 1174 3.1 884

#### 5th Dam:

Dun-Did Senator Reba

EX-93 EEEE DOM

4-07 305 19630 4.0 788 3.0 588

\*Res. All-American Aged Cow 1994

#### 6th Dam:

C Longlayne Admiral Robby

EX-92,2E EEEE

5-10 305 22100 3.8 832 3.0 653

#### 7th Dam:

Longlayne Baronet Robin

VG-85-CAN 86-MS

7-03 365 23181 3.9 913

# LOT 81

## Bluff-Ridge Kdoc Rhinestone

4-02 EX-90 VEEVE  
 3225051971 99%RHA-I  
 Born 2/2/22  
 2-00 365 25174 4.0 1000 3.3 829  
 3-07 218 15807 3.8 603 3.3 524 RIP  
 Last test- 68 lbs 4.2%F 3.6%P  
 SCC 187,000  
 Fresh 9/2/25  
 Due 8/19/26 to 799HO71 Major

### Woodcrest King Doc

3132417775 4/26 PTA +2834GTPI  
 +992M +27F +29P +1.0PL  
 +2.38T +1.13UDC +1.60FLC 99%R  
 Kingboy X VG-88 Mack

### Bluff-Ridge Def Ruby\*RC

2-10 VG-86 VVV+V 3149284888  
 2-04 365 18974 3.7 705 3.1 584  
 Sire: Sceintific B Defiant-ET\*RC

2nd Dam:  
 Bluff-Ridge Destry Raz-RED  
 EX-90,2E EEEEE

3rd Dam:  
 Double-D Coly Jen-RED-ET  
 VG-85 V+EV+

4th Dam:  
 Hy-Class Advnt Jessi-RED-ET  
 EX-90 VE+VE  
 5-06 305 22290 4.1 923 3.0 675  
 Lifetime 110310 4.1 4553 3.0 3335

5th Dam:  
 Hy-Class Rang Jaythne-RED-TW  
 EX-90 VEEVE  
 2-03 365 31190 3.6 1119 3.2 994  
 5-00 305 31780 3.5 1106 3.0 940  
 Lifetime 104660 3.7 3840 3.2 3215

6th Dam:  
 Hy-Class Rang Jathne-RED-TW  
 EX-90 VEEVE  
 2-03 365 31190 3.6 1119 3.2 994  
 Lifetime 104660 3.7 3840 3.2 3315

7th Dam:  
 Hy-Class Jacob Jackie-RED  
 EX-91 EEVEE  
 4-10 365 27800 2.8 785 3.0 827

8th Dam:  
 Jani-Mac June Logic-RED-ET  
 EX-91,2E DOM  
 3-05 305 32790 3.5 1158 3.2 1043

9th Dam:  
 Ja-Bob Harry Jerry-RED-ET  
 EX-90,2E EEVEV  
 6-00 365 30570 3.9 1183 3.4 1038  
 Lifetime 191560 3.7 7044 3.3 6390

10th Dam:  
 Ja-Bob Harmony Joy-RED-ET  
 EX-90,EX-MS  
 6-08 365 32901 3.4 1105 3.0 1001

# LOT 82 #424

## Zehrview Tattoo Rorie

3287558444 99%RHA-I  
 Born 9/2/25  
 Sire: Duckett Crush Tatoo-ET  
 3137052923 4/26 PTA +2132GTPI  
 +2.20T +1.34UDC +.62FLC 99%R  
 Crush X EX-93 Gold Chip  
 Dam: Rhinestone (Sells as Lot 81)

11th Dam:  
 Ja-Bob Mark Heavenly Joy EX-92,2E  
 7-03 365 33093 3.5 1155 3.2 1054

12th Dam:  
 Sky-Hi Mars Helen-ET  
 EX-92,4E GMD-DOM  
 10-00 365 30181 3.9 1175 3.2 963  
 Lifetime 235830 4.0 9407 3.4 7317

13th Dam thru 16th Dams all VG or EX

# LOT 83

## Zehrview Army Blitz\*RC

2-10 GP-82 +VGG+  
 3263438679 99%RHA-I  
 Born 6/3/23  
 2-08 51 3285 4.6 150 2.8 93 RIP  
 Last test- 72 lbs 3.8%F 2.8%P  
 SCC 19,000  
 Fresh 2/16/26  
 Bred 5/13/26 to  
 550HO12961 King Doc (sexed)

### Golden-Oaks Srg Army-RED-ET

3139216953 4/26 PTA +1961GTPI  
 +2.25T +1.55UDC +1.09FLC 83%R  
 Surge X EX-92,2E Destry

### Zehrview Sid Berlyn

2-10 GP-83 ++V++ 3133091880  
 2-02 305 20140 3.3 668 3.0 605  
 3-11 305 28800 3.7 769 3.1 647  
 5-06 305 22920 3.3 763 2.9 660  
 Sire: Pine-Tree Sid-ET

2nd Dam:  
 Zehrview Phoenix Brit  
 2-03 305 19730 2.7 528 3.1 603

3rd Dam:  
 Zehrview Finest Bernice  
 VG-85 V+V+V  
 4-11 305 20090 2.9 581 219 574

4th Dam:  
 Zehrview Bango Beryl  
 EX-92,2E EEVEE  
 4-05 297 17930 3.5 635 3.0 542

5th Dam:  
 Zehrview Ash Berta  
 VG-87 VVVVV  
 9-03 304 16190 3.9 630 3.0 490  
 Lifetime 112950 4.0 4510 3.1 3527

6th Dam:  
 Zehrview Calypso Bertha-ET  
 VG-87 VVEVV  
 6-06 365 26330 4.0 1066 3.1 824  
 Lifetime 112940 4.0 4510 3.2 3592

7th Dam:  
 Zehrview Inspiration Bertha  
 EX-90 EEEV DOM  
 7-05 365 25560 4.3 1107 3.3 837  
 Lifetime 216020 4.6 9961 3.4 4449

8th Dam:  
 Zehrview Banner Paclamr Bunny  
 VG-88 VEVV  
 Lifetime 132400 4.4 5766

9th Dam:  
 Mooseheart Banner Supreme  
 VG-85 VEV+

10th Dam:  
 Mooseheart Pet Supreme  
 VG-87 VVVV  
 Lifetime 105737 4.0 4097

## LOT 84

### Zehrview Army Dolly\*RC

**3-04 G-78 GVGFG**

3263438661 99%RHA-I

Born 12/5/22

3-03 33 2336 3.0 70 3.2 75 330 RIP

Last test- 80 lbs 2.7%F 2.9%P

SCC 200,000

**Fresh 3/6/26**

**Bred 5/10/26 to**

**799HO143 Private Jet**

### Golden-Oaks Srg Army-RED-ET

3139216953 4/26 PTA +1961GTPI

+2.25T +1.55UDC +1.09FLC 83%R

Surge X EX-92,2E Destry

### Zehrview D-Black Dreamer

**4-09 VG-87 EVVVV 3144607348**

2-04 305 16410 3.2 532 3.0 500

3-08 305 15290 3.6 555 3.2 494

Sire: Mr D Apple Diamondback\*RC

### 2nd Dam:

**Rolling-Lawns Dream-TW**

**GP-82 +++++**

2-06 305 15340 3.9 600 3.1 476

4-01 305 20840 4.0 837 3.1 644

5-09 305 12260 4.4 536 3.3 410

### 3rd Dam:

**Rolling-Lawns Jasper Dandy**

**EX-92 EEEEE**

4-11 348 32310 3.9 1262 2.9 940

### 4th Dam:

**Rolling-Lawns Zenith Darla**

**VG-85 V++VV**

3-04 365 27310 4.4 1190 3.4 918

### 5th Dam:

**Rolling-Lawns BS Darlene**

**VG-87 VVVVV**

5-10 365 26820 3.8 1028 3.0 818

Lifetime 157210 3.8 5899 3.1 4822

### 6th Dam:

**Rolling-Lawns Broker Dena**

**VG-88 EEEE+**

4-06 323 22190 3.6 797 3.0 668

### 7th Dam:

**Rolling-Lawns Jewel Dione**

**VG-88 VVVE**

10-08 3656 20310 4.0 808 3.0 601

Lifetime 156690 4.0 6264 3.0- 4265

### 8th Dam:

**Rolling-Lawns Dandy Daisy**

**VG-85 +V+V**

7-02 365 16650 4.3 720 3.1 510

### 9th Dam:

**Rolling-Lawns A Nona**

**VG-86 +V+E**

8-07 365 22470 4.2 952

Lifetime 141930 4.2 5998

### 2nd Dam:

**Zehrview D-Black Dreamer**

**4-09 VG-87 EVVVV 3144607348**

2-04 305 16410 3.2 532 3.0 500

3-08 305 15290 3.6 555 3.2 494

### 3rd Dam:

**Rolling-Lawns Dream-TW**

**GP-82 +++++**

4-01 305 20840 4.0 837 3.1 644

### 4th Dam:

**Rolling-Lawns Jasper Dandy**

**EX-92 EEEEE**

4-11 348 32310 3.9 1262 2.9 940

### 5th Dam:

**Rolling-Lawns Zenith Darla**

**VG-85 V++VV**

3-04 365 27310 4.4 1190 3.4 918

### 6th Dam:

**Rolling-Lawns BS Darlene**

**VG-87 VVVVV**

5-10 365 26820 3.8 1028 3.0 818

Lifetime 157210 3.8 5899 3.1 4822

### 7th Dam:

**Rolling-Lawns Broker Dena**

**VG-88 EEEE+**

4-06 323 22190 3.6 797 3.0 668

### 8th Dam:

**Rolling-Lawns Jewel Dione**

**VG-88 VVVE**

10-08 3656 20310 4.0 808 3.0 601

Lifetime 156690 4.0 6264 3.0- 4265

### 9th Dam:

**Rolling-Lawns Dandy Daisy**

**VG-85 +V+V**

7-02 365 16650 4.3 720 3.1 510

### 10th Dam:

**Rolling-Lawns A Nona VG-86 +V+E**

8-07 365 22470 4.2 952

Lifetime 141930 4.2 5998

## LOT 85

### Zehrview Famous Dove

3287558456 99%RHA-I

Born 3/6/26

**Sire: Zehrview T-Storm Famous**

3263438690 (Thunder Storm X

EX-93 Diamondback- sells as Lot 2)

**Dam: Army Dolly (Sells as Lot 84)**

## LOT 86

### Zehrview Tattoo Dice

3263438656 99%RHA-I

Born 10/1/22

2-07 341 24925 3.2 801 3.1 770 RIP

Last test- 70 lbs 3.7%F 3.3%P

SCC 19,000

**Fresh 5/2/25**

**Bred 2/17/26, Due 11/23/26 to**

**138HO7956 Fireball**

### Duckett Crush Tatoo-ET

3137052923 4/26 PTA +2132GTPI

+2.20T +1.34UDC +.62FLC 99%R

Crush X EX-93 Gold Chip

### Zehrview Rainy Domino

3144607435

2-06 148 7120 3.2 229 2.9 205

Sire: Rainyridge Bernie-ET\*RC

# LOT 87

## Zehrview Doorman Flurry

7-01 VG-88 EVVVV

3144607407 99%RHA-I

Born 3/5/19

3-00 365 21603 3.8 830 3.4 734

4-02 365 28905 4.2 1225 3.2 931

6-03 304 21055 3.8 809 3.2 681 RIP

Last test- 38 lbs 3.7%F 3.4%P

SCC 214,000

\*DRY COW\*

Due 8/22/26 to 138HO7823 Famous

### Val-Bisson Doorman-ET

107281711 8/26 PTA +2215GTPI

+1.88T +.63UDC +.60FLC 99%R

Bookem X EX-94 Shottle

### Zehrview Armani Flossie

5-10 VG-85 VVG+V 3133091882

2-05 305 16170 4.0 644 3.3 536

5-05 305 19680 4.6 897 3.2 622

7-01 305 21820 4.0 876 3.3 730

Lifetime 100110 4.2 4168 3.4 3418

Sire: Mr Apples Armani-ET\*RC

### 2nd Dam:

#### Zehrview Phoenix Flicka

GP-83 G+G+V

2-05 305 19770 3.0 598 3.1 616

3-09 305 20530 2.9 601 3.2 663

### 3rd Dam:

#### Erbacres Talent Fennela

EX-91,2E EEEEE

4-04 305 25800 3.0 781 3.1 804

Lifetime 103900 3.3 3437 3.3 3430

### 4th Dam:

#### Erbacres RM Felicia

EX-90,2E EEVVE

4-08 325 30200 3.1 940 3.2 981

Lifetime 108850 3.3 3592 3.3 3644

### 5th Dam:

#### Erbacres Milan Flicka

EX-91,2E EEEVE

5-06 365 33030 4.1 1369 3.2 1050

Lifetime 121520 4.0 4905 3.3 3980

### 6th Dam:

#### Erbacres Fragrance

EX-92,2E EEEEE GMD

8-04 330 30730 3.6 1116 3.0 920

9-04 365 29800 3.7 1095 3.0 895

Lifetime 213250 3.8 8016 3.1 6598

# LOT 88

## Zehrview Creed Fritz

3287558439 99%RHA-I

Born 6/8/25

Sire: Zehrview Tattoo Creed

3144607442 4/26 PTA +1933PTPI

Tattoo X Avalanche

Dam: Flurry (Sells as Lot 87)

# LOT 89

## Zehrview Army Frosty\*RC

3-03 G-79 GGFG+

3225051964 99%RHA-I

Born 3/20/22

2-07 365 26027 2.7 707 3.5 897

\*DRY COW\*

Due 6/29/26 to 138HO7823 Famous

### Golden-Oaks Srg Army-RED-ET

3139216953 4/26 PTA +1961GTPI

+2.25T +1.55UDC +1.09FLC 83%R

Surge X EX-92,2E Destry

### Zehrview Doorman Flurry

7-01 VG-88 EVVVV 3144607407

3-00 365 21603 3.8 830 3.4 734

4-02 365 28905 4.2 1225 3.2 931

6-03 304 21055 3.8 809 3.2 681 RIP

Sire: Val-Bisson Doorman-ET

\*She sells as Lot 87

### 2nd Dam:

#### Zehrview Armani Flossie

VG-85 VVG+V

2-05 305 16170 4.0 644 3.3 536

5-05 305 19680 4.6 897 3.2 622

7-01 305 21820 4.0 876 3.3 730

Lifetime 100110 4.2 4168 3.4 3418

### 3rd Dam:

#### Zehrview Phoenix Flicka

GP-83 G+G+V

3-09 305 20530 2.9 601 3.2 663

### 4th Dam:

#### Erbacres Talent Fennela

EX-91,2E EEEEE

4-04 305 25800 3.0 781 3.1 804

Lifetime 103900 3.3 3437 3.3 3430

### 5th Dam:

#### Erbacres RM Felicia

EX-90,2E EEVVE

4-08 325 30200 3.1 940 3.2 981

Lifetime 108850 3.3 3592 3.3 3644

### 6th Dam:

#### Erbacres Milan Flicka

EX-91,2E EEEVE

5-06 365 33030 4.1 1369 3.2 1050

Lifetime 121520 4.0 4905 3.3 3980

### 7th Dam:

#### Erbacres Fragrance

EX-92,2E EEEEE GMD

8-04 330 30730 3.6 1116 3.0 920

9-04 365 29800 3.7 1095 3.0 895

Lifetime 213250 3.8 8016 3.1 6598

## LOT 90

### Zehrview Army Frape\*RC

4-01 GP-83 V+VG+

3225051963 99%RHA-I

Born 3/5/22

2-03 365 17074 3.5 593 3.6 616

4-00 24 1594 3.5 56 3.5 56 RIP

Last test- 78 lbs 3.2%F 3.1%P

SCC 27,000

Fresh 3/15/26

Bred 5/11/26 to

799HO143 Private Jet

### Golden-Oaks Srg Army-RED-ET

3139216953 4/26 PTA +1961GTPI

+2.25T +1.55UDC +1.09FLC 83%R

Surge X EX-92,2E Destry

### Zehrview Armani Flossie

5-10 VG-85 VVG+V 3133091882

2-05 305 16170 4.0 644 3.3 536

5-05 305 19680 4.6 897 3.2 622

7-01 305 21820 4.0 876 3.3 730

Lifetime 100110 4.2 4168 3.4 3418

Sire: Mr Apples Armani-ET\*RC

### 2nd Dam:

Zehrview Phoenix Flicka

GP-83 G+G+V

2-05 305 19770 3.0 598 3.1 616

3-09 305 20530 2.9 601 3.2 663

### 3rd Dam:

Erbacres Talent Fennela

EX-91,2E EEEEEV

4-04 305 25800 3.0 781 3.1 804

Lifetime 103900 3.3 3437 3.3 3430

### 4th Dam:

Erbacres RM Felicia

EX-90,2E EEVVE

4-08 325 30200 3.1 940 3.2 981

Lifetime 108850 3.3 3592 3.3 3644

### 5th Dam:

Erbacres Milan Flicka

EX-91,2E EEEVE

5-06 365 33030 4.1 1369 3.2 1050

Lifetime 121520 4.0 4905 3.3 3980

### 6th Dam:

Erbacres Fragrance

EX-92,2E EEEEE GMD

8-04 330 30730 3.6 1116 3.0 920

9-04 365 29800 3.7 1095 3.0 895

Lifetime 213250 3.8 8016 3.1 6598

## LOT 91

### Ms Zehrview Unix Ghost

3-01 GP-80 ++++G

3263438673 99%RHA-I

Born 3/8/23

1-11 365 20601 3.6 734 3.5 715

Last test- 53 lbs 4.5%F 3.8%P

SCC 20,000

Fresh 3/1/25

Bred 2/18/26, Due 11/24/26 to

138HO7823 Famous

### Croteau Lesperron Unix-ET

107567492 4/26 PTA +2382GTPI

+186M +1.51T +1.14UDC +.01FLC

Numero Uno X VG-85 Domain

### Ms Zehrview Atwood Goldie

2-06 GP-82 +VV++ 3225051941

2-00 269 8210 3.7 304 3.4 261

Sire: Maple-Downs-I G W Atwood-ET

### 2nd Dam:

Kingsway Douglas Golden-ET

### 3rd Dam:

Kingsway Solomon Gorgeous

VG-87-CAN 86-MS

1-10 365 25811 3.9 996 3.2 827

### 4th Dam: Kingsway Atwood Lipgloss

EX-91-CAN 92-MS

4-11 326 25867 4.2 1085 3.2 818

### 5th Dam: Kingsway Champion Linda

VG-85-CAN

5-06 338 29008 3.5 1008 3.1 886

Lifetime 113164 3.5 3999 3.1 3503

### 6th Dam: Kingsway Astronomical Levi

VG-87-CAN VG-MS

5-00 365 31565 3.5 1116 3.4 1071

Lifetime 113909 3.6 4116 3.4 3660

### 7th Dam: Kingsway Lee Ashley

VG-85-CAN VG-MS

2-03 325 23721 3.7 873 3.3 783

### 8th Dam: Kingsway Inspir Archie

VG-88-CAN 91-MS

5-09 365 34081 4.0 1356 3.6 1232

Lifetime 107163 4.0 4266 3.5 3772

### 9th Dam: Kingsway Starbuck Autumn

EX-8E-CAN 93-MS

10-09 365 29121 3.6 1043 3.3 961

Lifetime 241007 3.7 8843 3.3 7837

### 10th Dam: Nelcam Tab Astra

EX-3E-CAN EX-MS

7-08 365 29592 3.7 1105 3.2 946

Lifetime 173160 3.5 6146 3.2 5606

### 11th Dam: Nelcam Prestar Astra

VG-88-CAN EX-MS

4-00 365 21554 3.4 734 3.3 710

### 12th Dam: Nelcam Count Alice

EX-CAN EX-MS

6-07 365 25695 3.4 875

Lifetime 118559 3.8 1451

### 13th Dam: Nelcam Leader Astra

EX-CAN 92-MS

**LOT 92 #409**

**Zehrview Army Gucci\*RC**

3287558429 99%RHA-I

Born 12/10/24

**Due 11/12/26 to**

**799HO051 Destination**

**Golden-Oaks Srg Army-RED-ET**  
3139216953 4/26 PTA +1961GTPI  
+2.25T +1.55UDC +1.09FLC 83%R  
Surge X EX-92,2E Destry

**Zehrview Diamondback Ginnie**  
**5-06 VG-88 EVEVV** 3144607355  
2-08 305 15550 2.1 320 3.2 494  
4-11 305 23460 2.8 654 2.9 691  
Sire: Mr D Apple Diamondback\*RC

**2nd Dam:**  
**Zehrview Phoenix Ginger**  
**VG-88 EEVVV**  
2-00 305 20490 4.0 813 3.1 641  
3-04 305 23730 3.9 921 3.1 731  
4-06 305 19830 4.0 785 3.4 682  
5-06 305 22220 3.6 799 3.2 716  
7-00 305 17920 4.2 754 3.4 611  
Lifetime 134400 4.0 5347 3.3 4482

**3rd Dam:**  
**Holbric Attraction Gypsy-TW**  
**EX-91,3E EEEEE**  
7-00 305 24530 3.2 787 2.8 684  
Lifetime 168170 3.3 5569 3.0 5085

**4th Dam:**  
**Holbric Windstar Gabby-ET**  
**VG-86 EVF+V**  
4-04 365 21200 4.1 879 3.4 717

**5th Dam:**  
**C Duplex Inspiration Gigi\*RC**  
**EX-95,3E EEEEE**  
8-11 365 35160 4.9 1724 3.0 1058  
Lifetime 154507 4.1 6353 3.0 4691

**LOT 93 #368**

**Zehrview Unix Glisten**

3263438668 99%RHA-I

Born 3/4/23

**Fresh 4/30/26**

**Croteau Lesperron Unix-ET**  
107567492 4/26 PTA +2382GTPI  
+186M +1.51T +1.14UDC +.01FLC  
Numero Uno X VG-85 Domain

**Zehrview Diamondback Ginnie**  
**5-06 VG-88 EVEVV** 3144607355  
2-08 305 15550 2.1 320 3.2 494  
4-11 305 23460 2.8 654 2.9 691  
Sire: Mr D Apple Diamondback\*RC

**2nd Dam:**  
**Zehrview Phoenix Ginger**  
**VG-88 EEVVV**  
2-00 305 20490 4.0 813 3.1 641  
3-04 305 23730 3.9 921 3.1 731  
4-06 305 19830 4.0 785 3.4 682  
5-06 305 22220 3.6 799 3.2 716  
7-00 305 17920 4.2 754 3.4 611  
Lifetime 134400 4.0 5347 3.3 4482

**3rd Dam:**  
**Holbric Attraction Gypsy-TW**  
**EX-91,3E EEEEE**  
7-00 305 24530 3.2 787 2.8 684  
Lifetime 168170 3.3 5569 3.0 5085

**4th Dam:**  
**Holbric Windstar Gabby-ET**  
**VG-86 EVF+V**  
4-04 365 21200 4.1 879 3.4 717

**5th Dam:**  
**C Duplex Inspiration Gigi\*RC**  
**EX-95,3E EEEEE**  
8-11 365 35160 4.9 1724 3.0 1058  
Lifetime 154507 4.1 6353 3.0 4691

**LOT 94**

**Zehrview Famous Glam**

\*Reg. pending

Born 4/30/26

**Sire:** Zehrview T-Storm Famous  
3263438690 (Thunder Storm X  
EX-93 Diamondback- sells as Lot 2)

**Dam:** Glisten (Sells as Lot 93)

**LOT 95**

**Zehrview Army Glossy-RED**

3263438693 99%RHA-I

Born 3/6/24

**Fresh 5/2/26**

**Golden-Oaks Srg Army-RED-ET**  
3139216953 4/26 PTA +1961GTPI  
+2.25T +1.55UDC +1.09FLC 83%R  
Surge X EX-92,2E Destry

**Zehrview Tattoo Gentry**  
**3-04 VG-85 V+V+V** 3225051930  
3-03 271 16710 2.7 442 3.0 498  
Sire: Duckett Crush Tatoon-ET

**2nd Dam:**  
**Zehrview Diamondback Ginnie**  
**VG-88 EVEVV**  
2-08 305 15550 2.1 320 3.2 494  
4-11 305 23460 2.8 654 2.9 691

**3rd Dam:**  
**Zehrview Phoenix Ginger**  
**VG-88 EEVVV**  
3-04 305 23730 3.9 921 3.1 731  
Lifetime 134400 4.0 5347 3.3 4482

**4th Dam:**  
**Holbric Attraction Gypsy-TW**  
**EX-91,3E EEEEE**  
7-00 305 24530 3.2 787 2.8 684  
Lifetime 168170 3.3 5569 3.0 5085

**5th Dam:**  
**Holbric Windstar Gabby-ET**  
**VG-86 EVF+V**  
4-04 365 21200 4.1 879 3.4 717

**6th Dam:**  
**C Duplex Inspiration Gigi\*RC**  
**EX-95,3E EEEEE**  
8-11 365 35160 4.9 1724 3.0 1058  
Lifetime 154507 4.1 6353 3.0 4691

## LOT 96

### Zehrview Army Gorgous\*RC

3263438667 99%RHA-I  
Born 3/5/23  
2-01 356 16289 4.0 651 3.3 541  
\*DRY COW\*

Due 6/14/26 to  
200HO12376 Bullseye

**Golden-Oaks Srg Army-RED-ET**  
3139216953 4/26 PTA +1961GTPI  
+2.25T +1.55UDC +1.09FLC 83%R  
Surge X EX-92,2E Destry

**Zehrview Acme Gabby**  
7-04 EX-91 EEEVE 3127419736  
2-03 305 20240 3.1 632 3.2 641  
3-11 305 20920 3.5 730 3.0 635  
5-10 305 25700 2.9 740 2.9 737  
8-00 301 20540 3.8 798 2.8 574  
Lifetime 118060 3.3 3942 3.1 3663  
Sire: KHW Elm-Park Acme-ET\*RC

**2nd Dam:**  
**Zehrview Phoenix Giggles**  
VG-86 VGVV  
2-02 305 16890 3.3 552 3.0 513  
3-06 305 15580 2.3 356 3.0 461  
5-03 305 18670 3.4 626 3.1 587  
7-03 305 21120 3.3 700 2.9 617  
**3rd Dam:**  
**Holbric Attraction Gypsy-TW**  
EX-91,3E EEEEE  
7-00 305 24530 3.2 787 2.8 684  
Lifetime 168170 3.3 5569 3.0 5085  
**4th Dam:**  
**Holbric Windstar Gabby-ET**  
VG-86 EVF+V  
4-04 365 21200 4.1 879 3.4 717  
**5th Dam:**  
**C Duplex Inspiration Gigi\*RC**  
EX-95,3E EEEEE  
8-11 365 35160 4.9 1724 3.0 1058  
Lifetime 154507 4.1 6353 3.0 4691

## LOT 97

### Zehrview Army Jaleah\*RC

2-10 GP-83 VVV++  
3263438676 99%RHA-I  
Born 6/2/23  
2-01 254 17201 3.2 545 3.1 541 RIP  
Last test- 65 lbs 4.2%F 3.5%P  
SCC 62,000  
Fresh 7/28/25  
Due 10/5/26 to 138HO7481 Creed

**Golden-Oaks Srg Army-RED-ET**  
3139216953 4/26 PTA +1961GTPI  
+2.25T +1.55UDC +1.09FLC 83%R  
Surge X EX-92,2E Destry

**Zehrview Simba Jezabel**  
5-03 VG-86 EVVVV 3133091897  
2-11 305 15300 4.1 628 3.2 482  
6-01 305 17220 3.8 649 3.1 528  
7-03 298 16620 3.7 613 3.3 544  
Sire: Zehr-Hartman Copenhagen Jen

**2nd Dam:**  
**Zehrview Copenhagen Jen**  
VG-85 V+++V  
2-06 305 20650 3.5 731 3.1 645  
4-00 305 17890 3.8 684 3.3 582  
5-07 305 23250 3.5 820 2.9 685  
**3rd Dam:**  
**Zehrview Stardust Jennifer**  
4-00 305 23110 3.2 729 2.7 629  
**4th Dam:**  
**Zehrview Bango Jen**  
VG-88 VEGVV  
8-05 305 23300 3.7 854 2.9 676  
Lifetime 148760 3.6 5417 3.0 4434

## LOT 98

### Zehrview Creed Juno

3287558438 99%RHA-I  
Born 6/3/25

**Zehrview Tattoo Creed**  
3144607442 4/26 PTA +1933PTPI  
Tattoo X Avalanche

**Zehrview Bango Jacuzzi**  
2-10 G-78 +++FG 3225051948  
2-04 365 19754 3.2 622 2.9 575  
3-11 302 20629 3.1 643 2.7 558  
Sire: Zehrview Astre Bango-ET

**2nd Dam:**  
**Zehrview Simba Jezabel**  
VG-86 EVVVV  
2-11 305 15300 4.1 628 3.2 482  
6-01 305 17220 3.8 649 3.1 528  
7-03 298 16620 3.7 613 3.3 544  
**3rd Dam:**  
**Zehrview Copenhagen Jen**  
VG-85 V+++V  
5-07 305 23250 3.5 820 2.9 685

## LOT 99

### Zehrview Analyst Jazzlyn\*RC

4-06 VG-87 VVG+V

3225051961 99%RHA-I

Born 10/2/21

2-05 361 20185 3.5 701 3.0 603

3-04 306 16368 3.7 602 3.2 530

4-05 34 3356 3.8 129 2.6 87 RIP

Last test- 102 lbs 3.5%F 2.6%P

SCC 31,000

Fresh 3/5/26

### Mr Affection Analyst-RED-ET

3136496608 4/26 PTA +1785GTPI

+1.42T +.71UDC +.87FLC 99%R

Unstopabull X EX-94,2E Byway

### Zehrview Sid Jazelle

5-04 EX-90 EEEEEV 3144607396

2-09 305 16910 4.4 744 3.4 568

4-04 305 20820 4.3 887 3.0 628

Sire: Pine-Tree Sid-ET

### 2nd Dam:

Zehrview Okaliber Jenelle

VG-88 VVE+V

3-11 305 19830 4.0 786 3.3 647

### 3rd Dam:

Zehrview Attic Jenna

VG-85 VVVV+

4-07 305 24590 3.4 826 3.1 773

### 4th Dam:

Miss Zehrview Josy

VG-85 EVV++

5-01 305 18250 3.7 668 2.9 522

## LOT 100 #397

### Zehrview King Doc Jive

3263438697 99%RHA-I

Born 3/5/24

Fresh 5/11/26

### Woodcrest King Doc

3132417775 4/26 PTA +2834GTPI

+992M +27F +29P +1.0PL

+2.38T +1.13UDC +1.60FLC 99%R

Kingboy X VG-88 Mack

### Zehrview Analyst Jazzlyn\*RC

4-06 VG-87 VVG+V 3225051961

2-05 361 20185 3.5 701 3.0 603

3-04 306 16368 3.7 602 3.2 530

Sire: Mr Affection Analyst-RED-ET

She sells as Lot 99

### 2nd Dam:

Zehrview Sid Jazelle

EX-90 EEEEEV

2-09 305 16910 4.4 744 3.4 568

4-04 305 20820 4.3 887 3.0 628

### 3rd Dam:

Zehrview Okaliber Jenelle

VG-88 VVE+V

3-11 305 19830 4.0 786 3.3 647

### 4th Dam:

Zehrview Attic Jenna

VG-85 VVVV+

4-07 305 24590 3.4 826 3.1 773

### 5th Dam:

Miss Zehrview Josy

VG-85 EVV++

5-01 305 18250 3.7 668 2.9 522

## LOT 101

### Zehrview Army Jaguar\*RC

3287558455 99%RHA-I

Born 3/5/26

### Golden-Oaks Srg Army-RED-ET

3139216953 4/26 PTA +1961GTPI

+2.25T +1.55UDC +1.09FLC 83%R

Surge X EX-92,2E Destry

### Zehrview Analyst Jazzlyn\*RC

4-06 VG-87 VVG+V 3225051961

2-05 361 20185 3.5 701 3.0 603

3-04 306 16368 3.7 602 3.2 530

Sire: Mr Affection Analyst-RED-ET

She sells as Lot 99

### 2nd Dam:

Zehrview Sid Jazelle

EX-90 EEEEEV

2-09 305 16910 4.4 744 3.4 568

4-04 305 20820 4.3 887 3.0 628

### 3rd Dam:

Zehrview Okaliber Jenelle

VG-88 VVE+V

3-11 305 19830 4.0 786 3.3 647

### 4th Dam:

Zehrview Attic Jenna

VG-85 VVVV+

4-07 305 24590 3.4 826 3.1 773

### 5th Dam:

Miss Zehrview Josy

VG-85 EVV++

5-01 305 18250 3.7 668 2.9 522

## LOT 102

### Zehrview Ash Quail

4-09 VG-85 VV++V

3225051926 100%RHA-NA

Born 9/11/20

2-09 365 19796 4.9 977 3.6 705

4-05 365 20493 5.5 1118 3.8 786

5-06 27 872 6.9 60 4.9 43 RIP

Last test- 38 lbs 6.2%F 4.4%P

SCC 54,000

Fresh 3/12/26

Due 10/26/26 to 138HO7956 Fireball

### Luck-E Lindy Ash-ET

2285164 4/26 PTA +1378PTPI

Lindy X EX-94,2E GMD Starbuck

### Zehrview Attic Quirk

5-01 VG-85 VV++V 3133091859

2-07 305 13110 4.2 547 3.4 440

4-04 305 14430 4.8 692 3.7 529

5-06 305 17250 4.7 813 3.4 587

Sire: Allyndale-I Attic-ET

### 2nd Dam:

#### Zehrview Rhyme Quick

VG-87 VEV+V

2-00 305 13360 4.2 557 3.3 445

3-00 305 14580 4.8 697 3.4 501

4-06 305 13600 4.3 584 3.5 481

6-00 305 19180 4.2 798 3.3 630

7-01 305 18450 4.3 798 3.4 622

### 3rd Dam:

#### Zehrview Barlow Quick

GP-83 ++VGV

2-04 305 12930 3.8 490 3.3 425

### 4th Dam:

#### Zehrview Ash Queena

VG-87 VV++V

7-05 305 17840 3.7 657 3.0 538

Lifetime 106410 3.8 4071 3.2 3362

## LOT 103

#414

### Zehrview Creed Quartz

3287558434 99%RHA-I

Born 3/4/25

Bred 5/3/26 to

200HO12376 Bullseye

### Zehrview Tattoo Creed

3144607442 4/26 PTA +1933PTPI

Tatoo X Avalanche

### Zehrview Ash Quail

4-09 VG-85 VV++V 3225051926

2-09 365 19796 4.9 977 3.6 705

4-05 365 20493 5.5 1118 3.8 786

Sire: Luck-E Lindy Ash-ET

\*She sells as Lot 102

### 2nd Dam:

#### Zehrview Attic Quirk

VG-85 VV++V

2-07 305 13110 4.2 547 3.4 440

4-04 305 14430 4.8 692 3.7 529

5-06 305 17250 4.7 813 3.4 587

### 3rd Dam:

#### Zehrview Rhyme Quicker

VG-87 VEV+V

6-00 305 19180 4.2 798 3.3 630

### 4th Dam:

#### Zehrview Barlow Quick

GP-83 ++VGV

2-04 305 12930 3.8 490 3.3 425

### 5th Dam:

#### Zehrview Ash Queena

VG-87 VV++V

7-05 305 17840 3.7 657 3.0 538

Lifetime 106410 3.8 4071 3.2 3362

## LOT 104

### Ms Zehrview Army Queso\*RC

2-01 VG-86 +V++V

3263438692 99%RHA-I

Born 3/5/24

2-00 22 1454 4.3 63 3.0 44 RIP

Last test- 82 lbs 3.9%F 2.7%P

SCC 93,000

Fresh 3/17/26

Bred 5/19/26 to

7HO16104 Eye Candy

### Golden-Oaks Srg Army-RED-ET

3139216953 4/26 PTA +1961GTPI

+2.25T +1.55UDC +1.09FLC 83%R

Surge X EX-92,2E Destry

### Ms Zehrview Rainy Q-Tip

4-01 VG-95 EV+++ 3225051929

3-05 305 16430 3.8 620 3.3 536

Sire: Rainyridge Bernie-ET

### 2nd Dam:

#### Ms Zehrview Barbwire Queene\*RC

VG-87 EEV+V

2-06 305 15940 3.4 536 3.2 509

4-00 305 16970 3.9 657 3.2 538

5-00 305 16390 3.6 587 3.2 531

### 3rd Dam:

#### Zehrview Sanchez Qwin

EX-92,2E EEEEE

2-11 305 22700 3.2 726 3.0 685

### 4th Dam:

#### Senteka Damion 893

EX-92 EEEEE

2-00 305 22340 3.5 787 3.2 724

### 5th Dam:

#### Senteka Frederick Judith

VG-88 VVVVV

7-10 365 30440 3.0 920 3.0 909

Lifetime 158150 3.0 4726 3.0 4745

### 6th Dam:

#### Senteka Mathie 379

VG-86 EVV+V

7-00 334 22770 4.0 900 3.1 708

**LOT 105 #407**

**Zehrview Eye Candy Jiggles**

3287558427 99%RHA-I

Born 9/20/24

Bred 5/4/26 to 7HO13869 Tatoo

**MB-Luckylady Eye Candy-ET**

3234629820 4/26 PTA +2474GTPI  
+3.01T +2.09UDC +1.66FLC 98%R  
Lambda X EX-95 3X All-Am Unix

**Zehrview Army Japsen\*RC**

**3-10 VG-87 EVVVV** 3225051936  
2-08 305 17520 4.0 701 3.1 541  
3-08 305 18210 4.4 809 3.3 597

Sire: Golden-Oaks Srg Army-RED-ET

**2nd Dam:**

**Zehrview Dundee Jester**  
**EX-92,2E EEEVE**  
2-03 365 19673 3.5 689 3.2 630  
4-00 265 18442 3.8 699 3.0 561  
5-10 365 26399 3.7 978 3.0 785

**3rd Dam:**

**Zehrview Afters Jelly-TW**  
**VG-85 V+V+V**  
2-08 305 25150 3.5 892 3.0 757

**4th Dam:**

**Zehrview Ace Judy**  
**VG-85 VVG+V**  
2-05 305 19030 2.9 557 2.8 528

**5th Dam:**

**Zehrview Black Ice Jewel**  
**GP-84 V+VV+**  
5-07 305 23220 3.6 834 2.8 653

**6th Dam:**

**Zehrview Dan Jane**  
**EX-90,3E EEEEV**  
8-06 305 24840 3.2 790 2.8 699  
Lifetime 231160 3.3 7534 3.0 7014

**LOT 106 #386**

**Zehrview D-Back Jingle**

3263438686 99%RHA-I

Born 9/5/23

Fresh 5/18/26

**Mr D Apple Diamondback\*RC**

3013721049 4/26 PTA +1954GTPI  
+1.77T +.96UDC +1.21FLC 99%R  
Doorman X EX-94,2E Talent

**Zehrview Army Japsen\*RC**

**3-10 VG-87 EVVVV** 3225051936  
2-08 305 17520 4.0 701 3.1 541  
3-08 305 18210 4.4 809 3.3 597

Sire: Golden-Oaks Srg Army-RED-ET

**2nd Dam:**

**Zehrview Dundee Jester**  
**EX-92,2E EEEVE**  
2-03 365 19673 3.5 689 3.2 630  
4-00 265 18442 3.8 699 3.0 561  
5-10 365 26399 3.7 978 3.0 785

**3rd Dam:**

**Zehrview Afters Jelly-TW**  
**VG-85 V+V+V**  
2-08 305 25150 3.5 892 3.0 757

**4th Dam:**

**Zehrview Ace Judy**  
**VG-85 VVG+V**  
2-05 305 19030 2.9 557 2.8 528

**5th Dam:**

**Zehrview Black Ice Jewel**  
**GP-84 V+VV+**  
5-07 305 23220 3.6 834 2.8 653

**6th Dam:**

**Zehrview Dan Jane**  
**EX-90,3E EEEEV**  
8-06 305 24840 3.2 790 2.8 699  
Lifetime 231160 3.3 7534 3.0 7014

**LOT 107**

**Zehrview Fireball Jiggy**

\*Reg. pending

Born 5/18/26

**Sire:** Zehrview Unix Fireball

32875558421

(Unix X EX-92 Master- sells as Lot 1)

**Dam:** Jingle (Sells as Lot 106)

**LOT 108**

**Zehrview Dback Starie**

**4-03 VG-85 EV+++**

3225051945 99%RHA-I

Born 3/28/21

2-09 365 27059 2.6 712 3.0 797

4-01 338 20963 2.6 553 3.2 665

\***DRY COW\***

Due 9/3/26 to 138HO7956 Fireball

**Mr D Apple Diamondback\*RC**

3013721049 4/26 PTA +1954GTPI  
+1.77T +.96UDC +1.21FLC 99%R  
Doorman X EX-94,2E Talent

**Zehrview Declan Starburst**

**3-08 GP-83 ++++V** 3133091905

Sire: Mr Aftershock Declan

**2nd Dam:**

**Zehrview Reginald Stardom**  
**VG-86 VVV+V**

2-09 305 19510 3.8 750 3.6 698

4-06 305 19920 4.2 838 3.4 686

**3rd Dam:**

**Zehrview Paucho Star**  
**VG-86 VVVVV**

4-08 305 23330 2.8 654 2.9 670

**7th Dam:**

**C Jerrann Astro Sadie EX-95**  
**\*Supreme Champion IL State**  
**Fair 1998**

## LOT 109

### Zehrview Army Bright\*RC

3-07 GP-84 VVVV+

3225051973 99%RHA-I

Born 9/3/22

2-03 365 16895 4.2 710 3.4 573

3-05 54 5109 4.9 251 2.8 142 RIP

Last test- 72 lbs 4.7%F 2.7%P

SCC 13,000

Fresh 2/13/26

### Golden-Oaks Srg Army-RED-ET

3139216953 4/26 PTA +1961GTPI

+2.25T +1.55UDC +1.09FLC 83%R

Surge X EX-92,2E Destry

### Zehrview Vixen Britley\*RC

4-05 VG-85 VVVV+ 3144607411

2-04 305 16200 3.1 502 3.1 510

Sire: Smith-Crest Doorman Vixen

### 2nd Dam:

#### Zehrview Acolad Britney-RED

4-11 305 16880 3.8 635 3.3 555

### 3rd Dam:

#### Poetic Boston-RED

#### VG-85 VV+GV

3-06 305 25020 3.5 869 3.0 762

### 4th Dam:

#### Poetic Merry

#### VG-85 VVVV+

2-02 314 28100 3.4 954 3.1 877

3-02 365 33340 3.2 1080 3.1 1048

4-06 313 27810 4.0 1110 3.0 837

Lifetime 109450 3.4 3706 3.0 3320

## LOT 110

### Zehrview Artist Barilla

3287558431 99%RHA-I

Born 12/6/24

### Stone-Front Artist-ET

3136876946 4/26 PTA +2062GTPI

+2.12T +.76UDC +.52FLC 99%R

Crush X EX-95.2E McCutchen

### Zehrview Army Bright\*RC

3-07 GP-84 VVVV+ 3225051973

2-03 365 16895 4.2 710 3.4 573

Sire: Golden-Oaks Srg Army-RED-ET

### 2nd Dam:

#### Zehrview Vixen Britley\*RC

#### VG-85 VVVV+

2-04 305 16200 3.1 502 3.1 510

### 3rd Dam:

#### Zehrview Acolad Britney-RED

4-11 305 16880 3.8 635 3.3 555

### 4th Dam:

#### Poetic Boston-RED

#### VG-85 VV+GV

3-06 305 25020 3.5 869 3.0 762

### 5th Dam:

#### Poetic Merry

#### VG-85 VVVV+

2-02 314 28100 3.4 954 3.1 877

3-02 365 33340 3.2 1080 3.1 1048

4-06 313 27810 4.0 1110 3.0 837

Lifetime 109450 3.4 3706 3.0 3320

## LOT 111

### Zehrview Dback Brightley

3-09 GP-82 V+V+G

3225051954 99%RHA-I

Born 9/4/21

3-04 365 25974 3.1 807 3.1 810

\*DRY COW\*

Due 6/27/26 to 138HO7823 Famous

### Mr D Apple Diamondback\*RC

3013721049 4/26 PTA +1954GTPI

+1.77T +.96UDC +1.21FLC 99%R

Doorman X EX-94,2E Talent

### Zehrview Vixen Britley\*RC

4-05 VG-85 VVVV+ 3144607411

2-04 305 16200 3.1 502 3.1 510

Sire: Smith-Crest Doorman Vixen

### 2nd Dam:

#### Zehrview Acolad Britney-RED

4-11 305 16880 3.8 635 3.3 555

### 3rd Dam:

#### Poetic Boston-RED

#### VG-85 VV+GV

3-06 305 25020 3.5 869 3.0 762

### 4th Dam:

#### Poetic Merry

#### VG-85 VVVV+

2-02 314 28100 3.4 954 3.1 877

3-02 365 33340 3.2 1080 3.1 1048

4-06 313 27810 4.0 1110 3.0 837

Lifetime 109450 3.4 3706 3.0 3320

## LOT 112

### Zehrview Ash Georgette

4-04 GP-81 V+V+G

3144607438 99%RHA-I

Born 7/4/20

3-04 365 19188 4.6 887 3.7 716

4-11 306 15629 4.7 734 3.7 585 RIP

Last test- 34 lbs 5.6%F 4.2%P

SCC 214,000

Fresh 6/6/25

Due 7/30/26 to Angus

#### Luck-E Lindy Ash-ET

2285164 4/26 PTA +1378PTPI

Lindy X EX-94,2E GMD Starbuck

#### Zehrview Solomon Georean

6-06 EX-91,2E EEEEE 3144607398

2-10 305 13800 4.4 602 3.5 481

4-09 305 18600 4.6 852 3.6 663

Sire: Walnutlawn Solomon-ET

#### 2nd Dam:

Ms Zehrview Armani Georgia

GP-84 V+V++

2-04 305 14860 4.4 647 3.6 541

#### 3rd Dam:

Zehrview Goldsun Girlfriend

VG-87 VVV+V

3-07 305 18830 4.1 779 3.2 606

#### 4th Dam:

Senteka Damion 893

EX-92 EEEEE

2-00 305 22340 3.5 787 3.2 724

#### 5th Dam:

Senteka Frederick Judith

VG-88 VVVVV

7-10 365 30440 3.0 920 3.0 909

Lifetime 158150 3.0 4726 3.0 4745

#### 6th Dam:

Senteka Mathie 379

VG-86 EVV+V

7-00 334 22770 4.0 900 3.1 708

## LOT 113

### Zehrview Creed Gala

3287558440 99%RHA-I

Born 6/6/25

#### Zehrview Tattoo Creed

3144607442 4/26 PTA +1933PTPI

Tatoo X Avalanche

#### Zehrview Ash Georgette

4-04 GP-81 V+V+G 3144607438

3-04 365 19188 4.6 887 3.7 716

4-11 306 15629 4.7 734 3.7 585 RIP

Sire: Walnutlawn Solomon-ET

#### 2nd Dam:

Zehrview Solomon Georean

EX-91,2E EEEEE

2-10 305 13800 4.4 602 3.5 481

4-09 305 18600 4.6 852 3.6 663

#### 3rd Dam:

Ms Zehrview Armani Georgia

GP-84 V+V++

2-04 305 14860 4.4 647 3.6 541

#### 4th Dam:

Zehrview Goldsun Girlfriend

VG-87 VVV+V

3-07 305 18830 4.1 779 3.2 606

#### 5th Dam: Senteka Damion 893

EX-92 EEEEE

2-00 305 22340 3.5 787 3.2 724

#### 6th Dam: Senteka Frederick Judith

VG-88 VVVVV

7-10 365 30440 3.0 920 3.0 909

Lifetime 158150 3.0 4726 3.0 4745

#### 6th Dam: Senteka Mathie 379

VG-86 EVV+V

7-00 334 22770 4.0 900 3.1 708

## LOT 114

### Zehrview Army Globe\*RC

2-07 GP-81 +++G+

3263438687 99%RHA-I

Born 9/26/23

2-05 36 2090 3.6 76 3.2 66 RIP

Last test- 72 lbs 3.2%F 2.9%P

SCC 13,000

Fresh 3/3/26

Bred 5/1/26 to 799HO051 Destination

#### Golden-Oaks Srg Army-RED-ET

3139216953 4/26 PTA +1961GTPI

+2.25T +1.55UDC +1.09FLC 83%R

Surge X EX-92,2E Destry

#### Zehrview Solomon Georean

6-06 EX-91,2E EEEEE 3144607398

2-10 305 13800 4.4 602 3.5 481

4-09 305 18600 4.6 852 3.6 663

Sire: Walnutlawn Solomon-ET

#### 2nd Dam:

Ms Zehrview Armani Georgia

GP-84 V+V++

2-04 305 14860 4.4 647 3.6 541

#### 3rd Dam:

Zehrview Goldsun Girlfriend

VG-87 VVV+V

3-07 305 18830 4.1 779 3.2 606

#### 4th Dam:

Senteka Damion 893

EX-92 EEEEE

2-00 305 22340 3.5 787 3.2 724

#### 5th Dam:

Senteka Frederick Judith

VG-88 VVVVV

7-10 365 30440 3.0 920 3.0 909

Lifetime 158150 3.0 4726 3.0 4745

#### 6th Dam:

Senteka Mathie 379

VG-86 EVV+V

7-00 334 22770 4.0 900 3.1 708



## Alphabetical Index

Bluff-Ridge Kdoc Rhinestone	81	Zehrview Ash Quail	102
Clearfield Unix Lyrical	68	Zehrview Ash Raisin	37
Erbracres Double Trouble	43	Zehrview Bango Sea-TW	22
Harvstar Believe Regina	79	Zehrview Believe Rum Chata	33
Harvstar Denver Roxy-ET	78	Zehrview Bullseye Butters	42
Harvstar Goldwyn Rebel-ET	80	Zehrview Caught up Radar	25
Heatherstone Persephoni-RED	74	Zehrview Creed Fritz	88
Holbric Integral Freakish	3	Zehrview Creed Gala	113
Klingendale Tadoo Milly	16	Zehrview Creed Juno	98
Lakeshore Alt Eloise-ET	20	Zehrview Creed Quartz	103
Lakeshore Banana Pudding-ET	15	Zehrview Creed Rumi	26
Ms Blackjack Kdoc Echo	18	Zehrview Creed Suade	56
Ms Zehr-JMK Diamond Bling	40	Zehrview D-Back Jingle	106
Ms Zehrview Army Adore	73	Zehrview D-Back Panama	10
Ms Zehrview Army Audi	72	Zehrview D-Back Tango	69
Ms Zehrview Army Queso	104	Zehrview Dback Brightley	111
Ms Zehrview D-Back Abilene	61	Zehrview Dback Starie	108
Ms Zehrview Master Toby	70	Zehrview Diamondback Clove	14
Ms Zehrview Unix Ghost	91	Zehrview Diamondback Fancy	2
Scenic-Edge Jillayne-RED-ET	19	Zehrview Doorman Flurry	87
Zehr-JMK Army Alba	58	Zehrview Eye Candy Dior	67
Zehr-JMK Army Aladdin	59	Zehrview Eye Candy Double D	44
Zehrview Absolute Colt-ET	13	Zehrview Eye Candy Jiggles	105
Zehrview Alleyoop Albany	60	Zehrview Eye Candy Rayban	30
Zehrview Analyst Jazzlyn	99	Zehrview Famous Dove	85
Zehrview Army Blitz	83	Zehrview Famous Dynamite	48
Zehrview Army Bright	109	Zehrview Famous Fashion	4
Zehrview Army Cactus-RED	7	Zehrview Famous Glam	94
Zehrview Army Darling	46	Zehrview Famous Reba	27
Zehrview Army Denton	50	Zehrview Famous Satin	57
Zehrview Army Diamond-RED	65	Zehrview Famous Sugar	63
Zehrview Army Dolly	84	Zehrview Fireball Jiggy	107
Zehrview Army Doodle-RED	49	Zehrview Fireball Candy	9
Zehrview Army Flirt	115	Zehrview Footloose Elsa	21
Zehrview Army Frappe	90	Zehrview Footprint Java	77
Zehrview Army Frosty	89	Zehrview Karl Spirit	53
Zehrview Army Globe	114	Zehrview King Doc Cutie	8
Zehrview Army Glossy-RED	95	Zehrview King Doc Jive	100
Zehrview Army Gorgous	96	Zehrview Major Del Rio	51
Zehrview Army Gucci	92	Zehrview Major Magnum	17
Zehrview Army Hummer-RED	75	Zehrview Master Flash	1
Zehrview Army Jaguar	101	Zehrview Master Onyx	23
Zehrview Army Jaleah	97	Zehrview Master Trix	64
Zehrview Army Joker	76	Zehrview Okaliber Rizzo	28
Zehrview Army Majic-RED	71	Zehrview Peaches Cream	6
Zehrview Army Pennie	116	Zehrview Phoenix Diva	66
Zehrview Army Porsche	12	Zehrview Premier Fairy	5
Zehrview Army Prada	11	Zehrview Raid Rockett	34
Zehrview Army Razzle	29	Zehrview Showtime Barbie	41
Zehrview Army Remedy	39	Zehrview T-Storm Danci-RED	47
Zehrview Army Roper	31	Zehrview T-Storm Regret	38
Zehrview Army Rubi-RED	24	Zehrview T-Storm Rover	35
Zehrview Army Sandi-RED	52	Zehrview Tadoo Dice	86
Zehrview Army Silky	62	Zehrview Tadoo Raine	36
Zehrview Army Sleek	55	Zehrview Tattoo Rorie	82
Zehrview Army Sweetpea-RED	54	Zehrview Unix Glisten	93
Zehrview Artist Barilla	110	Zehrview Unix Rumor	32
Zehrview Ash Georgette	112	Zehrview Unstopabull Demi	45



# HOLSTEIN ASSOCIATION TERMS AND CONDITIONS FOR PUBLIC SALES

EFFECTIVE MARCH 2, 1996 - Amended October 1, 1997, June 28, 2000, June 23, 2002, and March 26, 2010

**TERMS:** The terms of the sale are cash unless arrangements are made prior to the sale or are printed in the sale catalog. Only when the above conditions are met will the buyer be entitled to the warranties listed below. In no case will animals be released unless settlement is made with the clerk of the sale.

**RESPONSIBILITY:** The seller, buyer, and manager of this sale are obligated to comply with the provisions of these terms and conditions.

**EXPORT SALES:** Buyer assumes all responsibility for health tests required by the importing country.

**BIDS:** The highest bidder is the buyer. Bidding parties or their agents are responsible for all bids placed. Every animal or lot presented for bidding is pledged to absolute sale. In case of dispute, the animal or lot will again be put up for advance bids, and if there is no advance bid, the animal or lot will be sold to the person the auctioneer accepted the last bid from. In case two or more claim the bid, the auctioneer will indicate the party whose bid he recognized. Other claimants will be given an opportunity to increase the bid and bidding will be restricted to the two or more claimants.

**BY-BIDDING:** Bidding directly or indirectly by the sole owner of any animal or lot is prohibited unless the intention to bid is disclosed specific to each animal in the catalog and announced when the animal enters the ring. Bidding by any member of a partnership, syndicate, or other entity having an ownership interest in an animal or lot is permitted.

**TRANSFER OF OWNERSHIP:** For all Registered Holsteins<sup>SM</sup>, the transfer of ownership to the buyer will be recorded on the records of Holstein Association USA and a certificate of registration showing that transfer of ownership will be provided to the buyer free of charge. For embryos, the transfer of ownership to the buyer will be recorded on the records of Holstein Association USA free of charge to the buyer.

**RISK:** All animals located at sale site are at the purchaser's risk as soon as struck off, but will be cared for free of charge for a maximum of 24 hours following the end of the sale.

## WARRANTIES:

- 1) Each consignor warrants clear title to the animal or lot, and the right to sell same.
- 2) To the best of the seller's knowledge, each animal is sound and healthy in every respect and embryos have been recovered, processed, frozen, transferred and graded in keeping with IETS recommendations unless otherwise noted in the catalog or announced from the auction stand. Every precaution will be taken to represent the physical condition of each lot exactly as is known. Examination of all purchases should be made immediately after the purchase and before the close of the sale, and if found not to be as represented, complaint must be reported to the sale management before the close of the sale. In the event no complaint is filed, it is understood that the buyer assumes full ownership in the case of animals at sale site together with all risks, after which no representations of the seller can be challenged through the sale management. Heifers that never calved are in no way guaranteed as to the condition of their udders following calving.
- 3) **Breeding Warranty**  
The seller guarantees all animals to be breeders, but not beyond the purchase price, with the following understanding:
  - a. Males - Should any bull after reaching the age of fourteen months fail to prove a breeder after being used for two months on cows or heifers known to be breeders, the matter shall be reported in writing to the seller within three months of the sale date. The report must include the animal's examination record, a written statement of treatment, and a statement of the animals' inability to breed,

by a licensed veterinarian. The seller has the option to refund the purchase price or make other settlement that is satisfactory to the buyer. In either case the rights of ownership of the animal return to the seller. The seller makes no guarantees with respect to the ability to freeze semen.

- b. Females - All females are guaranteed to be breeders with the exception of:
  1. Cows over 7 years of age when sold;
  2. Cows and/or heifers carrying a pregnancy that is the result of an embryo transfer.

Report of a non-breeder must occur in writing within 3 months of the date of sale or before the animal reaches 21 months of age and must be submitted to the seller. The report must include the animal's examination record, a written statement of treatment, and a statement of the animals' inability to breed, by a licensed veterinarian. The seller has the option to refund the purchase price or make other settlement that is satisfactory to the buyer. In either case the rights of ownership of the animal return to the seller.

Females bred when sold and pronounced in calf are presumed to be pregnant but pregnancy is not guaranteed unless so announced. The seller makes no warranty that pregnant cows will deliver calves or that they will carry calves full term.

- c. If, after the sale, embryos or oocytes are recovered from a female or an attempt is made to superovulate her, this negates the breeding warranty unless there is a separate written agreement between buyer and seller.

**SHIPPING:** Assistance will be given in arranging shipping of the animals after the sale. All costs, risks and responsibility will be borne by the purchaser.

**PEDIGREE INFORMATION:** All production, classification, type and production summaries are current. Only information recorded on Holstein Association USA pedigrees is used. Any production or classification records supplied by the seller or consignor will be properly identified as provided by owner. Records in progress are identified as such.

**GENOMIC INFORMATION:** If genomic information on the animal or embryo is available, it must be dated and disclosed at or before the time of sale.

**EMBRYO TRANSFER:** All registered animals that have resulted from embryo transfer are identified with one of the following suffixes in the name: ET, ETS (from split embryo), or ETN (from nuclear transfer). If unregistered, the appropriate technology will be identified. Donor dams are identified.

**HEALTH WARRANTY:** The seller will provide an official health certificate to the buyer for each animal showing the results of all health tests made in preparation for this sale as required by the state where the cattle reside. Other health tests completed for this sale will be disclosed.

**ERRORS:** The material in this catalog has been carefully edited. If any errors or omissions are discovered, they will be announced. Such announcements take precedence over that printed in this catalog.

**ACCIDENT:** The sale management, the consignors, and the owner of the grounds will not be responsible in any case for the condition of the grounds or the behavior of the animals and disclaim any liability in the event of personal accident or property loss.

**LIMITATIONS OF WARRANTIES:** Warranties contained herein, unless terminated earlier, will cease upon the resale of an animal.

**PLEASE BRING THIS CATALOG TO THE SALE!**

Catalogs by:

**Daniel Brandt**   
PEDIGREES & MARKETING

167 Valley Lane, Annville, PA 17003  
Ph: 717-821-1238 • E-mail: [brandtfive@comcast.net](mailto:brandtfive@comcast.net)