

TRIANGLE ACRES

HERD DISPERSAL

Home of Blonde-Haired Kids and Big Browns Cows



JUNE 15, 2026 • FREEPORT, ILLINOIS





JUNE 15, 2026

**At the Farm:
800 W Elm Rd.
Freeport, IL 61032**

John, Wendy, and Becky Korth

SUNDAY, JUNE 14: 4-8 PM ... CATTLE VIEWING

MONDAY, JUNE 15: 11 AM ... AUCTION START
Equipment sells first with cattle to follow

SALE MANAGEMENT

B&M Auctions of Wisconsin, LLC
608-328-4878 or 608-558-4924

SALE PREPARATION

Amy Hughes330-641-1246

SALE VETERINARIAN

Lena Vet Clinic

TRUCKING

Allyn "Spud" Paulson605-868-9028

SALE CONTACTS

John Korth815-297-5722
Wendy Korth815-291-6679
Becky Korth815-291-8421
Caleb Heck815-275-9021
Matt Henkes563-880-8614
Kathi Brown Meier, Pedigrees608-558-8089

Sale will be broadcast live via
www.cowbuyer.com with
real-time bidding to
pre-approved buyers!
Contact Aaron Ray Tompkins
336-363-4639.



LOT 1 TRIANGLE ACRES HUGE NELLY

DOB 7/21/2022 Tattoo: K929
Reg. 840 3227794900

03/01 'V86' V85 V86 V85 V86 V87 (08/25)

2Y ME 23,809M 1104F 848P

3-08 2 41 3843 4.2 160 3.1 120 Inc

Last test: 99 lbs., 33 SCC
Fresh 3/25; Sells Open

3rd - 7th Dams:

Triangle Acres Prsu Advent G79

2-03 2 306 21100 3.7 777 3.2 674

Triangle Acres Thry Addie V87

3-06 2 365 30520 4.4 1330 3.9 1193

LIFE 1518 112670 4683 4358

Triangle Acres Volt Adell E90 91-MS

7-05 2 365 26710 4.4 1175 4.0 1064

LIFE 2265 148040 6946 5944

Triangle Acres Bank Adeline V88

8-07 2 365 29340 4.2 1244 3.5 1017

LIFE 2460 162670 7044 6004

GOLDHILL BENDERE HUGE SG ET

120137798624 Casein: A2A2 BB
Genetic Conditions: PT DT MT WT BH2T BH14T
PPR +47 87%R PTAT +0.3 86%R (04/26)
PTA +638M +12F +17P +26NM\$ 92%R (MACE)
PL +0.4 SCS +2.99 DPR -0.2 SCE +3.6 LIV -0.1

TRIANGLE ACRES ALL IN NANCY

USA 68192824 Casein: A2A2
Genetic Conditions: PT DT MT WT BH2C BH14T
06/01 'V88' V88 E90 V86 V87 V88 (07/24)
2-01 2 331 22120 4.3 960 3.5 783
3-01 2 329 26070 4.1 1065 3.7 964
4-02 2 365 30680 4.0 1215 3.6 1105
5-07 2 365 29730 4.3 1279 3.4 999
LIFE 1550 118850 4957 4247

Triangle Acres Em Andrea V88

7-01 2 365 28850 4.9 1413 3.7 1071
LIFE 2600 167490 7808 6179

1st 5-Year-Old, IL State Fair '98
3rd Aged Cow, IL State Fair '99



Triangle Acres Huge Nelly V88

Sells as Lot 1

R HART ATLANTAS ALL-IN ETV *TM

840 3132541841 PPR +24

TRIANGLE ACRES T NALA TWIN

840 3135193053

Lost during 1st lactation

LOT 2 TRIANGLE ACRES SLVR PEBBLE

DOB 2/7/2020 Tattoo: K847
Reg. 840 3205318047

Genetic Conditions: PT DT MT WT BH2T BH14T

04/05 'V86' V87 V88 V85 +84 V86 (07/24) *CERT*

2-00 2 365 30510 4.3 1307 3.6 1097

3-05 2 365 30420 4.5 1360 3.8 1144

5-10 2 136 11100 3.7 414 3.0 335 Inc

Last test: 74 lbs., 18 SCC
Fresh 12/20; Bred 2/25; Due 12/8 to Ignite

3rd - 9th Dams:

Triangle Acres Explr Polish E92 EX-MS

4-05 3 305 30350 3.9 1194 3.5 1060

LIFE 2349 189580 4.3 8156 3.4 6844

1st Senior 2-Year-Old, IL State Fair '14

Triangle Acres Porcelain 2E90 *Cert*

6-05 2 365 31610 5.0 1568 3.6 1141

LIFE 2558 196510 4.6 9121 3.6 7182

Triangle Acres Palisade ET +82

4-00 2 365 30340 4.2 1278 3.5 1072

Triangle Acres Pol Palace +82

3-04 2 358 29190 4.1 1211 3.5 1032

Triangle Acres Coll Polly E92 *Cert*

5-03 2 365 40070 4.7 1866 3.5 1388

LIFE 1645 133300 5944 5016

Dam of Triangle Acres Po Payoff ET *TM

LA RAINBOW SWEET SILVER ET

840 3129321124 Casein: A1A2 BB
Genetic Conditions: PT DT MT WT BH2T BH14T
PPR +43 95%R PTAT +0.2 98%R (04/26)
PTA +339M +3F +16P +174NM\$ 98%R (MACE)
PL +1.4 SCS +2.86 DPR -0.4 SCE +3.2 LIV -0.5

TRIANGLE ACRES SMN PATTIO

840 3139214233
Genetic Conditions: PT DT MT WT BH2T BH14C
03/04 'V87' V87 E90 V85 E90 V85 (07/20)
1-11 2 288 13550 4.3 582 3.6 488
2-10 2 365 24170 3.9 952 3.5 841
4-03 2 316 27190 3.9 1056 3.6 992
1st Spring Yearling, IL State Fair '18

Triangle Acres Patty *TM 2E-90 *Elite*

9-00 2 365 40060 3.7 1466 3.1 1233
LIFE 3792 281540 10311 9726

Triangle Acres Pats Poppy V86 *Supr Brood Cow*

4-05 2 365 22400 3.4 756 3.6 817
LIFE 2099 111080 3983 4074



Triangle Acres Coll Polly E92 *Cert*

Matriarch of Numerous Lots

CUTTING EDGE SEAMAN *TM

USA 68137657 PPR -42

TRIANGLE ACRES AGIO PATTIE

USA 68128410 04/11 'V85' VE+++ (07/21)
2-00 2 323 21860 4.1 906 3.4 750
3-00 2 312 25070 4.2 1046 3.5 882
4-00 2 365 25210 4.3 1078 3.6 906
2nd 4-Year-Old, IL State Fair '15

LOT 3 TRIANGLE ACRES PHRECKLE OCS

DOB 1/27/2023 Tattoo: K940
Reg. 840 3268894338

02/07 '+81' +80 V85 +83 +82 +80 (08/25)

2-03 2 366 21621 4.1 878 3.5 760

Last test: 41 lbs., 33 SCC
Bred 9/27; Due 7/7 to Angus

6th - 9th Dams:

Triangle Acres Po Proper ET V88 *Cert*

3-02 2 365 26150 4.2 1104 3.7 968
LIFE 2487 152460 6656 5562

Triangle Acres Coll Polly E92 *Cert*

Triangle Acres Patty *TM 2E-90 *Elite*

Triangle Acres Pats Poppy V86 *Supr Brood Cow*

PINE-TREE HILTON HERREN ETV

840 3150687206 Casein: A2A2 BB
Genetic Conditions: PT DT MT WT BH2T BH14T
PPR +51 84%R PTAT -0.3 85%R (04/26)
PTA -153M +27F +18P +236NM\$ 91%R (MACE)
PL +0.7 SCS +3.02 DPR -2.0 LIV +0.0

TRIANGLE ACRES LMBRG PHOTO

840 3145618184
Genetic Conditions: PT DT MT WT BH2T BH14T
05/04 'V86' V88 V88 V85 +84 V86 (04/23) *CERT*
2-01 2 365 24400 4.3 1052 3.6 875
4-01 2 302 30780 4.3 1314 3.4 1059

3rd - 5th Dams:

Triangle Acres Prkr Parfait V88

6-07 3 297 28570 3.9 1114 3.3 940
LIFE 1648 133010 5257 4604

Triangle Acres Dom Plenty V85 *Cert*

4-07 2 353 31390 4.2 1334 3.5 1083
LIFE 2908 218600 9021 7456

Triangle Acres SE Plinko V88

7-04 2 365 27560 4.5 1238 3.8 1059
LIFE 2631 179460 8237 6555

TWINKLE-HILL SBLAMBORGHINI *TM

840 3129317136 PPR +88

TRIANGLE ACRES BVR PHOEBE

840 3130408107 06/11 '1E-E92' EEEEE (09/22)
2-01 2 365 21690 4.3 941 3.7 803
3-07 2 365 31031 4.1 1272 3.6 1126
4-09 2 365 34360 4.7 1600 3.8 1293
LIFE 1750 130600 5814 5080

LOT 4 TRIANGLE ACRES SKPR PINT

DOB 10/28/2023 Tattoo: K968
Reg. 840 3268894277

02/03 'V86' +84 V86 V85 V85 V87 (02/26)

2-00 2 170 9797 3.9 378 3.4 336 Inc

Last test: 54 lbs., 18 SCC
Fresh 11/16; Bred 3/13; Due 12/24 to Ignite

3rd - 7th Dams:

Triangle Acres Eagle Pegg 3E-92

8-00 2 365 37620 4.0 1509 3.3 1223
LIFE 3134 240180 9213 8044

2nd 4-Year-Old, IL State Fair '12

Triangle Acres Es Prell 2E-90

7-00 2 365 33030 4.0 1337 3.5 1160
LIFE 3133 240860 9833 8109

Triangle Acres Col Peggy-ET V-87

3-08 2 365 32810 4.0 1322 3.4 1102
LIFE 1400 109910 4504 3736

Triangle Acres Patty *TM 2E-90 *Elite*

Triangle Acres Pats Poppy V86 *Supr Brood Cow*

LA RAINBOW SWEET SKIPPER ET

840 3221039070 Casein: A1A2 BB
Genetic Conditions: PT DT MT WT BH2T BH14T
PPR -28 76%R PTAT +0.8 77%R (04/26)
PTA -339M -27F -6P -316NM\$ 84%R (GEN)
PL -1.0 SCS +2.75 DPR -0.1 SCE +3.5 LIV -1.3

TRIANGLE ACRES OMALLEYS PUB

840 3225427777
04/01 'V88' V88 E91 V87 V85 V88 (08/25)
2-03 2 318 20340 4.4 888 3.5 720
3-04 2 365 26290 4.5 1184 3.7 968



Triangle Acres Skpr Pint V86

Sells as Lot 4

O MALLEY

4427424483 PPR +107

TRIANGLE ACRES CP PEPPER

USA 68151574 05/03 'V88' EEE+V (08/18) *Cert*
2-00 2 347 22070 4.0 878 3.4 740
3-01 2 365 27700 4.4 1209 3.6 1000
4-10 2 323 26100 4.1 1079 3.3 857
5-11 2 305 20870 4.3 895 3.5 725
7-00 2 345 28380 4.1 1163 3.3 933
LIFE 2085 146690 6242 5010

LOT 5 TRIANGLE ACRES FMS POPSTAR

DOB 03/20/2024 Tattoo: K980
Reg. 840 3268894328

Bull Bred 11/16; Due in September Triangle Acres
Szlng Peril (Sizzling x Sonic Perfect x Tequila Perhaps
x Vigor Pert)

Full sister to Lot: Triangle Acres Fms Popover
2nd Sr 2-Year-Old, Midwest Quality Colors '23

3rd - 8th Dams:

Triangle Acres Po Porridge +82
2-03 2 365 21300 4.0 862 3.7 784

Triangle Acres Ab Puddin V87
3-05 2 318 23820 4.0 946 3.6 850

Triangle Acres Pone Please E90 EX-MS
2-07 2 344 25430 4.1 1040 3.5 889

Triangle Acres Bal Promise +81
4-08 2 365 33960 3.7 1265 3.1 1065

LIFE 2333 177580 6697 5788

Triangle Acres Motivate Penny V86
8-08 2 365 26880 3.6 964 3.5 940

LIFE 3055 207410 7667 7323

Triangle Acres Pats Poppy V86 *Supr Brood Cow*

BROWN HEAVEN R FAMOUS ET

CAN 109109715 Casein: A2A2 BB
Genetic Conditions: PT DT MT WT BH2T BH14T
PPR -38 94%R PTAT +0.3 97%R (04/26)
PTA +338M -13F -6P -297NM\$ 98%R (MACE)
PL -1.3 SCS +3.16 DPR -1.6 SCE +4.2 LIV -0.5

TRIANGLE ACRES LKY POPSICLE

840 3145618207
Genetic Conditions: PT DT MT WT BH2T BH14T
05/03 'V85' V86 V88 +83 +83 V86 (04/23)
2-00 2 319 20060 4.0 795 3.2 645
3-00 2 320 27350 4.3 1184 3.4 941
4-01 2 322 31520 4.2 1326 3.4 1076
5-01 2 344 33380 4.3 1432 3.4 1125
6-02 2 170 16550 4.1 685 3.0 502
LIFE 1475 128860 5422 4289



Triangle Acres Fms Popover
Full Sister to Lot 5

BMG LUST GET LUCKY ET *TM

USA 68170100 PPR +73

TRIANGLE ACRES EMGY PUDDING

USA 68142797 04/11 'V88' VEVVE (06/17)
2-03 2 316 15810 4.5 718 3.9 612
3-03 3 365 27740 5.1 1422 3.8 1057
4-05 2 322 27400 4.1 1135 3.5 970
5-06 2 365 25200 4.4 1106 3.6 915
LIFE 1626 109410 5085 4095

LOT 6 TRIANGLE ACRES TRMPH PINUP

DOB 3/26/2022 Tattoo: K919
Reg. 840 3227794889

03/10 '+83' V86 V89 +83 +82 +81 (02/26)

2-01 2 365 22910 4.1 936 3.4 789

3-06 2 220 17129 3.9 665 3.4 587 Inc

Last test: 70 lbs., 283 SCC
Fresh 9/27; Bred 1/28; Due 11/10 to Tank

6th - 9th Dams:

Triangle Acres Po Poet ET E-90
3-11 2 365 31380 2.9 1222 3.3 1021

LIFE 1788 119720 4703 4247

Triangle Acres Coll Polly E92 *Cert*

Triangle Acres Patty *TM 2E-90 *Elite*

Triangle Acres Pats Poppy V86 *Supr Brood Cow*

TRIANGLE ACRES MJT TRIUMPH

840 3205318071
Genetic Conditions: PT DT MT WT BH2C BH14T
PPR +129 63%R PTAT +0.0 68%R (04/26)
PTA +1321M +49F +47P +579NM\$ 66%R (GEN)
PL +3.2 SCS +3.04 DPR +1.3 LIV +1.3

TRIANGLE ACRES POSTER GIRL

840 3205318050
02/06 'V85' +84 V86 +83 V85 V86 (09/22)
2-00 2 346 21820 4.6 1003 3.4 751

3rd - 5th Dams:

Triangle Acres Prpl Postage V85 *Cert*
2-02 3 362 31060 3.1 957 3.3 1010

Triangle Acres Mojo Pose V85 VG-MS
5-07 3 329 30910 4.6 1424 3.3 1031

LIFE 1857 144550 6517 5017

Triangle Acres Pres Posy ET 3E-90 *Cert*
7-11 2 365 32980 3.4 1136 3.5 1157

LIFE 3019 208250 7878 7573

TRIANGLE ACRES DRBL PEGASUS

USA 68149162 PPR -7

TRIANGLE ACRES PMD POSTCARD

840 3135193059 04/03 'V88' VEVEV (07/20)
1-11 2 286 14450 4.0 571 3.3 472
2-10 2 325 27150 3.6 977 3.2 881
3-11 2 365 28500 3.9 1119 3.3 944

LOT 7 TRIANGLE ACRES THDR PICTURE

DOB 05/05/2021 Tattoo: K890
Reg. 840 3225427768

04/03 'V87' E90 E90 V85 V85 V87 (08/25)

1-10 2 365 25300 4.0 1007 3.4 862
3-00 2 365 27740 4.6 1279 3.3 925

Sells Dry
Bred 8/27; Due 6/6 to Giovanni

5th - 7th Dams:

Triangle Acres Coll Polly E92 *Cert*

Triangle Acres Patty *TM 2E-90 *Elite*

Triangle Acres Pats Poppy V86 *Supr Brood Cow*

HARTS THUNDER *TM

USA 68113037 Casein: AB
Genetic Conditions: *TM PT DT WT BH2T BH14T
PPR +41 97%R PTAT +0.2 98%R (04/26)
PTA +368M +2F +11P +155NM\$ 99%R (MACE)
PL +1.3 SCS +3.21 DPR -0.3 SCE +2.4 LIV +1.8

TRIANGLE ACRES TQLA PRETTY

840 3145618215 Casein: A2A2
Genetic Conditions: PT DT MT WT BH2T BH14T
04/05 '+84' V86 V87 +83 +82 +84 (09/22)
2-00 2 330 18720 4.5 851 3.4 641
3-01 2 309 26400 4.4 1153 3.6 939
4-01 2 277 22150 4.1 917 3.6 787

3rd - 4th Dams:

Triangle Acres Pres Posy ET 3E-90 *Cert*
Triangle Acres Po Poet ET E-90

COZY NOOK CARTER TEQUILA ET*TM

68156279 PPR +15

TRIANGLE ACRES MOJO POSE

USA 68122691 05/01 'V85' VVW+V (08/15)
2-05 2 360 20220 4.9 988 3.7 747
3-07 2 311 22630 4.5 1024 3.7 841
4-07 2 304 21160 4.5 950 3.6 769
5-07 3 329 30910 4.6 1424 3.3 1031
6-08 2 347 30210 4.3 1301 3.4 1023
LIFE 1857 144550 6517 5017

LOT 8 TRIANGLE ACRES PSR PORTRAIT

DOB 05/20/2024 Tattoo: K984
Reg. 840 3268894316

Bull Bred 11/27; Due in September to Triangle Acres
Szlng Peril (Sizzling x Sonic Perfect x Tequila Perhaps
x Vigor Pert)

6th - 8th Dams:

Triangle Acres Coll Polly E92 *Cert*

Triangle Acres Patty *TM 2E-90 *Elite*

Triangle Acres Pats Poppy V86 *Supr Brood Cow*

TRIANGLE ACRES FACT PROSPER*TM

840 3135193068 Casein: A2A2 BB
Genetic Conditions: *TM PT DT WT BH2T BH14T
PPR +74 81%R PTAT -0.7 82%R (04/26)
PTA +668M +18F +20P +351NM\$ 88%R (GEN)
PL +4.3 SCS +2.65 DPR +1.6 SCE +3.3 LIV +2.8

TRIANGLE ACRES THDR PICTURE

840 3225427768
04/03 'V87' E90 E90 V85 V85 V87 (08/25)
1-10 2 365 25300 4.0 1007 3.4 862
3-00 2 365 27740 4.6 1279 3.3 925

3rd - 5th Dams:

Triangle Acres Mojo Pose V85 VG-MS
Triangle Acres Pres Posy ET 3E-90 *Cert*
Triangle Acres Po Poet ET E-90

HARTS THUNDER *TM

USA 68113037 PPR +41

TRIANGLE ACRES TQLA PRETTY

840 3145618215 A2A2 04/05 '+84' VV+++
2-00 2 330 18720 4.5 851 3.4 641
3-01 2 309 26400 4.4 1153 3.6 939
4-01 2 277 22150 4.1 917 3.6 787

LOT 9 TRIANGLE ACRES JSR PRU

DOB 12/5/2022 Tattoo: K935
Reg. 840 3268894332

02/08 'V85' +83 V86 V85 +83 V86 (08/25)

2-01 2 305 20140 4.6 930 3.3 666
3-02 2 64 5194 4.1 211 3.6 185 Inc

Last test: 74 lbs., 13 SCC
Fresh 3/2/26; Bred 5/17 to Netflix

3rd - 9th Dams:

Triangle Acres Explr Polish E92 EX-MS

Triangle Acres Porcelain 2E90 *Cert*

Triangle Acres Palisade ET +82

Triangle Acres Pol Palace +82

Triangle Acres Coll Polly E92 *Cert*

Triangle Acres Patty *TM 2E-90 *Elite*

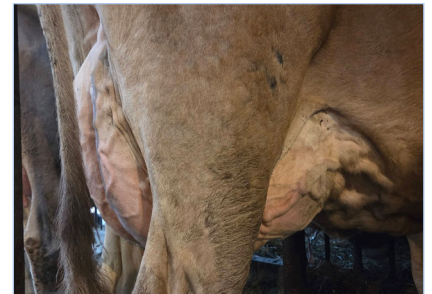
Triangle Acres Pats Poppy V86 *Supr Brood Cow*

TRIANGLE ACRES PHNTM JASPER

840 3225427761
Genetic Conditions: PT DT MT WT BH2T BH14T
PPR +11 68%R PTAT +0.3 73%R (04/26)
PTA -661M +0F -8P +22NM\$ 72%R (GEN)
PL +2.0 SCS +2.99 DPR +1.0 LIV +2.1

TRIANGLE ACRES PRECISE

840 3205318066
Genetic Conditions: PT DT MT WT BH2T BH14T
03/10 'V86' V87 E90 +84 V85 V85 (07/24) *Cert*
2-03 2 365 29440 3.5 1021 3.2 949
3-06 2 365 23290 4.2 976 3.5 820



Triangle Acres Jspr Pru V85

Sells as Lot 9

HF HURAY ARCHER

840 3126134470 PPR +60

TRIANGLE ACRES NW POLLYANNA

840 3135193077 04/11 'V85' VE+++ (07/21)
2-00 2 323 21860 4.1 906 3.4 750
3-00 2 312 25070 4.2 1046 3.5 882
4-00 2 365 25210 4.3 1078 3.6 906
2nd Junior 3-Year-Old, Midwest Spring '19

LOT 10 TRIANGLE ACRES PRECARIOUS

DOB 9/27/2021 Tattoo: K905
Reg. 840 3227794914

04/04 'V87' V87 E90 V86 V85 V86 (02/26)

2-04 2 365 25570 4.7 1204 3.6 916
3-11 2 246 19157 4.5 854 3.7 713 Inc

Last test: 74 lbs., 23 SCC
Fresh 9/1/25; Bred 1/16; Due 10/29 to Sasuke

Junior Champion, Stephenson Co. Fair '22

3rd - 9th Dams:

Triangle Acres Explr Polish E92 EX-MS

4-05 3 305 30350 3.9 1194 3.5 1060
LIFE 2349 189580 4.3 8156 3.4 6844

1st Senior 2-Year-Old, IL State Fair '14

Triangle Acres Porcelain 2E-90 *Cert*

6-05 2 365 31610 5.0 1568 3.6 1141
LIFE 2558 196510 4.6 9121 3.6 7182

Triangle Acres Palisade ET +82

4-00 2 365 30340 4.2 1278 3.5 1072

R HART ATLANTAS ALL-IN ETV *TM

840 3132541841 Casein: A2A2 AB
Genetic Conditions: *TM PT DT WT BH2T BH14T
PPR +24 83%R PTAT +0.2 85%R (04/26)
PTA +18M -6F +5P +71NM\$ 90%R (GEN)
PL +1.3 SCS +2.73 DPR +1.4 SCE +2.7 LIV +0.9

TRIANGLE ACRES PERCOSCIOUS

USA 68194555 Casein: A1A2
Genetic Conditions: PT DT MT WT BH2T BH14T
05/11 '+84' +83 E90 V85 +82 +83 (07/24)
2-02 2 297 18598 4.3 803 3.7 679
3-01 2 365 25610 4.0 1028 3.7 936
4-11 2 365 29770 4.3 1275 3.6 1064

Triangle Acres Pol Palace +82

3-04 2 358 29190 4.1 1211 3.5 1032
LIFE 1653 110980 4442 3775

Triangle Acres Coll Polly E92 *Cert*

Triangle Acres Patty *TM 2E-90 *Elite*

Triangle Acres Pats Poppy V86 *Supr Brood Cow*



Triangle Acres Explr Polish E92

3rd Dam of Lot 10

COZY NOOK ANIBAL TENASCIOUS ET

840 3138129980 PPR -27

TRIANGLE ACRES NW POLLYANNA

840 3135193077 04/11 'V85' VE+++ (07/21)
2-00 2 323 21860 4.1 906 3.4 750
3-00 2 312 25070 4.2 1046 3.5 882
4-00 2 365 25210 4.3 1078 3.6 906
2nd Junior 3-Year-Old, Midwest Spring '19

LOT 11 TRIANGLE ACRES PRETENTIOUS

DOB 2/06/2024 Tattoo: K977
Reg. 840 3268894325

2-00 2 65 3148 3.9 123 3.4 107 Inc

Last test: 56 lbs., 13 SCC
Fresh 3/1/26; Bred 5/17 to Netflix

3rd - 10th Dams:

Triangle Acres NW Pollyanna V85

Triangle Acres Explr Polish E92 EX-MS

Triangle Acres Porcelain 2E-90 *Cert*

Triangle Acres Palisade ET +82

Triangle Acres Pol Palace +82

Triangle Acres Coll Polly E92 *Cert*

Triangle Acres Patty *TM 2E-90 *Elite*

Triangle Acres Pats Poppy V86 *Supr Brood Cow*

HF DESIGN ET

840 3218804016 Casein: A2A2 AB
Genetic Conditions: PT DT MT WT BH2T BH14T
PPR +12 87%R PTAT +0.6 93%R (04/26)
PTA +41M -1F +8P -120NM\$ 95%R (MACE)
PL -1.9 SCS +3.16 DPR -1.5 SCE +3.8 LIV -0.4

TRIANGLE ACRES PRECARIOUS

840 3227794914
04/04 'V87' V87 E90 V86 V85 V86 (02/26)
2-04 2 365 25570 4.7 1204 3.6 916



Triangle Acres Timeout Pause

Daughter of Lot 11

2nd Winter Calf, Midwest Spring Show '26

R HART ATLANTAS ALL-IN ETV *TM

840 3132541841 PPR +24

TRIANGLE ACRES PERCOSCIOUS

USA 68194555 05/11 '+84' +EV++ (07/24)
2-02 2 297 18598 4.3 803 3.7 679
3-01 2 365 25610 4.0 1028 3.7 936
4-11 2 365 29770 4.3 1275 3.6 1064

LOT 12 TRIANGLE ACRES PRESTIGIOUS

DOB 12/01/2024 Tattoo: K995
Reg. 840 3268894308

Bred 4/18; Due 1/29 to Cliff

5th Winter Calf, WI Summer Show '25

3rd - 9th Dams:

Triangle Acres Explr Polish E92 EX-MS

Triangle Acres Porcelain 2E-90 *Cert*

Triangle Acres Palisade ET +82

Triangle Acres Pol Palace +82

Triangle Acres Coll Polly E92 *Cert*

Triangle Acres Patty *TM 2E-90 *Elite*

Triangle Acres Pats Poppy V86 *Supr Brood Cow*

BROWN HEAVEN WINNINGFORMULA ET

CAN 107362998 Casein: A2A2 AB

Genetic Conditions: PT DT MT WT BH2T BH14T

PPR -93 93%R PTAT +0.3 96%R (04/26)

PTA -873M -31F -32P -509NM\$ 97%R (MACE)

PL -1.7 SCS +3.15 DPR -0.5 SCE +4.4 LIV -1.4

TRIANGLE ACRES PERCOSCIOUS

USA 68194555 Casein: A1A2

Genetic Conditions: PT DT MT WT BH2T BH14T

05/11 '+84' +83 E90 V85 +82 +83 (07/24)

2-02 2 297 18598 4.3 803 3.7 679

3-01 2 365 25610 4.0 1028 3.7 936

4-11 2 365 29770 4.3 1275 3.6 1064



Triangle Acres Prestigious

Sells as Lot 12

COZY NOOK ANIBAL TENASCIOUS ET

840 3138129980 PPR -27

TRIANGLE ACRES NW POLLYANNA

840 3135193077 04/11 'V85' VE+++ (07/21)

2-00 2 323 21860 4.1 906 3.4 750

3-00 2 312 25070 4.2 1046 3.5 882

4-00 2 365 25210 4.3 1078 3.6 906

2nd Junior 3-Year-Old, Midwest Spring '19

LOT 13 TRIANGLE ACRES PTTN PSPICE

DOB 10/14/2023 Tattoo: K966
Reg. 840 3268894275

02/04 'V85' +83 V86 +83 +83 V86 (02/26)

2-01 2 154 10829 3.2 346 3.0 327 Inc

Last test: 58 lbs., 13 SCC

Fresh 12/2; Bred 2/23; Due 12/6 to Sweet Sox

3rd - 11th Dams:

Triangle Acres Powderdsugar V88 EX-MS

3-02 2 305 24420 4.1 1003 3.4 840

Triangle Acres D Powder OCS V85

2-11 2 336 27880 3.8 1073 3.4 944

Triangle Acres Gldwn Pewter V87 EX-MS *Cert*

4-03 2 338 30890 4.1 1280 3.7 1132

Triangle Acres Porcelain 2E90 *Cert*

Triangle Acres Palisade ET +82

Triangle Acres Pol Palace +82

TRIANGLE ACRES LTG PATTERNS

840 3225427774

Genetic Conditions: PT DT MT WT BH2T BH14T

PPR +9 62%R PTAT +0.5 69%R (04/26)

PTA +593M +6F +11P -65NM\$ 66%R (GEN)

PL -1.5 SCS +2.99 DPR -3.4 LIV -1.3

TRIANGLE ACRES JK PSALTY

840 3225427775

04/01 'E90' V88 E91 V89 V88 E90 (08/25)

2-03 2 365 23500 3.9 926 3.3 775

3-06 2 236 18680 3.8 703 3.2 607

Triangle Acres Coll Polly E92 *Cert*

Triangle Acres Patty *TM 2E-90 *Elite*

Triangle Acres Pats Poppy V86 *Supr Brood Cow*



Triangle Acres Rich PSweets 2E-90

Grandam of Lot 13

TRIANGLE ACRES CARTER JUKE

840 3139214232 PPR -52

TRIANGLE ACRES RICH PSWEETS

840 3205318015 05/01 '2E-90' EEVEE (07/24)

2-01 2 365 28910 4.1 1145 3.3 930

3-06 2 346 28910 5.0 1450 3.3 961

4-07 2 219 19850 4.4 874 3.3 646

2nd Junior 3-Year-Old, Midwest Spring Show '22

Land of Lincoln Reserve Junior Champion '20

LOT 14 TRIANGLE ACRES T PERHAPS ET

DOB 4/25/2017 Tattoo: K740

Reg. 840 3139214202

Genetic Conditions: PT DT MT WT BH2T BH14T

07/02 '2E-90' E90 E91 V88 V89 E90 (07/24)

2-05	2	345	22500	4.5	1014	3.5	796
3-06	2	332	24620	4.7	1147	3.6	892
4-07	2	365	31710	4.4	1386	3.6	1139
6-02	2	365	26590	4.1	1090	3.6	961
7-05	2	365	21520	4.3	930	3.58	811
8-10	2	67	4890	3.9	192	3.3	162 Inc
LIFE	1949	138900		6155			5060

Last test: 87 lbs., 41 SCC

Fresh 2/27; Bred 5/15 to Ignite

3rd 5-Year-Old, Midwest Quality Colors '22

3rd - 6th Dams:

Triangle Acres Po Poetry ET 2E-92 *Cert*

4-05 2 365 34200 4.0 1351 3.2 1101

LIFE 1371 100090 4.0 4240 3.1 3435

Triangle Acres Coll Polly E92 *Cert*

COZY NOOK CARTER TEQUILA ET*TM

68156279 Casein: A2A2 BB

Genetic Conditions: PT DT MT WT BH2T BH14T

PPR +15 97%R PTAT -0.1 98%R (04/26)

PTA +143M +9F +3P +82NM\$ 98%R (MACE)

PL +2.4 SCS +2.90 DPR +0.0 SCE +2.7 LIV +0.9

SUN-MADE KB VIGOR PERT ET

USA 68106811

09/11 '2E-92' E92 E92 E92 E90 E92 (08/18)

2-06 2 365 26100 4.52 1177 3.6 944

3-10 2 365 31290 4.5 1423 3.7 1166

5-10 2 365 32210 4.2 1368 3.7 1182

7-06 3 365 33980 4.3 1458 3.6 1208

8-10 2 365 25730 4.4 1142 3.8 990

LIFE 2339 179580 8011 6763

Triangle Acres Patty *TM 2E-90 *Elite*

Triangle Acres Pats Poppy V86 *Supr Brood Cow*



Triangle Acres T Perhaps ET 2E-90

Sells as Lot 14

SUN-MADE VIGOR ET *TM

USA 195618 PPR +0

TRIANGLE ACRES POTTERY ET

USA 901844 04/04 'E92' EEEEE (08/05) *Cert*

2-07 2 365 24700 4.5 1105 3.6 885

3-11 2 365 31450 4.5 1425 3.7 1162

LOT 15 TRIANGLE ACRES HUGE PARDI

DOB 07/22/2023 Tattoo: K953

Reg. 840 3268894282

02/06 'V86' V85 V86 V85 V85 V87 (02/26)

2-01 2 246 16505 4.0 652 3.5 574 Inc

Last test: 66 lbs., 41 SCC

Fresh 9/1; Bred 4/29 to Ignite

3rd - 7th Dams:

Triangle Acres Pottery ET E92 *Cert*

3-11 2 365 31450 4.5 1425 3.7 1162

Triangle Acres Po Poetry ET 2E-92 *Cert*

4-05 2 365 34200 4.0 1351 3.2 1101

LIFE 1371 100090 4.0 4240 3.1 3435

Triangle Acres Coll Polly E92 *Cert*

Triangle Acres Patty *TM 2E-90 *Elite*

Triangle Acres Pats Poppy V86 *Supr Brood Cow*

GOLDHILL BENDERE HUGE SG ET

120137798624 Casein: A2A2 BB

Genetic Conditions: PT DT MT WT BH2T BH14T

PPR +47 87%R PTAT +0.3 86%R (04/26)

PTA +638M +12F +17P +26NM\$ 92%R (MACE)

PL +0.4 SCS +2.99 DPR -0.2 SCE +3.6 LIV -0.1

TRIANGLE ACRES T PERHAPS ET

840 3139214202

07/02 '2E-90' E90 E91 V88 V89 E90 (07/24)

2-05 2 345 22500 4.5 1014 3.5 796

3-06 2 332 24620 4.7 1147 3.6 892

4-07 2 365 31710 4.4 1386 3.6 1139

6-02 2 365 26590 4.1 1090 3.6 961

7-05 2 365 21520 4.3 930 3.58 811

LIFE 1949 138900 6155 5060



Sun-Made KB Vigor Pert ET 2E-92

Grandam of Lot 15

COZY NOOK CARTER TEQUILA ET*TM

USA 68156279 PPR +15

SUN-MADE KB VIGOR PERT ET

USA 68106811 09/11 '2E-92' EEEEE (08/18)

2-06 2 365 26100 4.52 1177 3.6 944

3-10 2 365 31290 4.5 1423 3.7 1166

5-10 2 365 32210 4.2 1368 3.7 1182

7-06 3 365 33980 4.3 1458 3.6 1208

8-10 2 365 25730 4.4 1142 3.8 990

LIFE 2339 179580 8011 6763

LOT 16 TRIANGLE ACRES SLR PERENIAL

DOB 5/04/2019 Tattoo: K817

Reg. 840 3205318014

Genetic Conditions: PT DT MT WT BH2T BH14T

05/02 'V87' V88 E90 V86 V85 V86 (07/24)

2-00	2	304	22480	4.0	901	3.6	799
3-00	2	365	26830	4.2	1136	3.7	984
4-02	2	365	31000	4.0	1251	3.6	1112
5-09	2	305	28250	4.0	1124	3.4	968
6-09	2	68	6790	3.6	245	3.2	220 Inc
LIFE	1508	199670		4894			4293

Last test: 95 lbs., 41 SCC

Fresh 2/26; Bred 5/15 to Ignite

3rd - 7th Dams:

Triangle Acres Pottery ET E92 *Cert*

Triangle Acres Po Poetry ET 2E-92 *Cert*

Triangle Acres Coll Polly E92 *Cert*

Triangle Acres Patty *TM 2E-90 *Elite*

Triangle Acres Pats Poppy V86 *Supr Brood Cow*

LA RAINBOW SWEET SILVER ET

840 3129321124 Casein: A1A2 BB

Genetic Conditions: PT DT MT WT BH2T BH14T

PPR +43 95%R PTAT +0.2 98%R (04/26)

PTA +339M +3F +16P +174NM\$ 98%R (MACE)

PL +1.4 SCS +2.86 DPR -0.4 SCE +3.2 LIV -0.5

TRIANGLE ACRES TQL PERTA ET

840 3139214236

Genetic Conditions: PT DT MT WT BH2T BH14T

03/07 '+84' V85 +84 +82 +83 +84 (12/20)

2-00 2 362 26320 4.1 1091 3.6 951

3-02 2 317 22800 4.6 1055 3.8 856

4-03 2 248 22130 4.2 931 3.8 831



Triangle Acres Po Poetry ET 2E-92

4th Dam of Lot 16

COZY NOOK CARTER TEQUILA ET*TM

USA 68156279 PPR +15

SUN-MADE KB VIGOR PERT ET

USA 68106811 09/11 '2E-92' EEEEE (08/18)

5-10 2 365 32210 4.2 1368 3.7 1182

7-06 3 365 33980 4.3 1458 3.6 1208

LIFE 2339 179580 8011 6763

LOT 17 TRIANGLE ACRES SECRET PSST

DOB 05/13/2022 Tattoo: K924

Reg. 840 3227794895

03/03 'V86' V86 +84 V86 V85 V86 (08/25)

2-00	2	305	16470	4.2	694	3.5	570
3-11	2	13	827	5.0	41	3.6	30 Inc

Last test: 80 lbs., 18 SCC

Fresh 4/22

3rd - 8th Dams:

Sun-Made KB Vigor Pert ET 2E-92

Triangle Acres Pottery ET E92 *Cert*

Triangle Acres Po Poetry ET 2E-92 *Cert*

Triangle Acres Coll Polly E92 *Cert*

Triangle Acres Patty *TM 2E-90 *Elite*

Triangle Acres Pats Poppy V86 *Supr Brood Cow*

CUTTING EDGE SECRET WEAPON

USA 68193312 Casein: A2A2 BB

Genetic Conditions: PT DT MT WT BH2T BH14T

PPR -65 887%R PTAT +0.4 92%R (04/26)

PTA -1148M -35F -22P -418NM\$ 94%R (MACE)

PL -0.7 SCS +2.88 DPR -1.6 SCE +2.3 LIV -0.1

TRIANGLE ACRES SLR PERENIAL

840 3205318014

Genetic Conditions: PT DT MT WT BH2T BH14T

05/02 'V87' V88 E90 V86 V85 V86 (07/24)

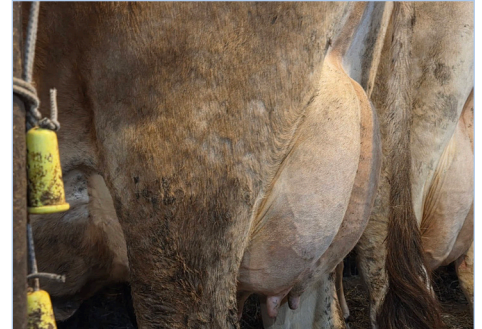
2-00 2 304 22480 4.0 901 3.6 799

3-00 2 365 26830 4.2 1136 3.7 984

4-02 2 365 31000 4.0 1251 3.6 1112

5-09 2 305 28250 4.0 1124 3.4 968

LIFE 1508 199670 4894 4293



Triangle Acres Secret Psst V86

Sells as Lot 17

LA RAINBOW SWEET SILVER ET

840 3129321124 PPR +43

TRIANGLE ACRES TQL PERTA ET

840 3139214236 03/07 '+84' V++++ (12/20)

2-00 2 362 26320 4.1 1091 3.6 951

3-02 2 317 22800 4.6 1055 3.8 856

4-03 2 248 22130 4.2 931 3.8 831

LOT 18 TRIANGLE ACRES SLR PHOXY ET

DOB 09/10/2021 Tattoo: K902
Reg. 840 3227794908

02/09 'V85' +84 V86 +82 +84 V85 (07/24)

2-00	2	365	23360	4.3	1011	3.5	827
3-03	2	348	25160	4.4	1095	3.7	929
4-04	2	100	7479	4.2	317	3.3	244 Inc

Last test: 74 lbs., 200 SCC
Fresh 1/25; Bred 4/25 to Ignite

Mat sister: Triangle Acres Richard Pandora '2E93'
HM All-American Senior 2-Year-Old '18

3rd - 6th Dams:

Triangle Acres Po Poetry ET 2E-92 *Cert*

Triangle Acres Coll Polly E92 *Cert*

Triangle Acres Patty *TM 2E-90 *Elite*

Triangle Acres Pats Poppy V86 *Supr Brood Cow*

LA RAINBOW SWEET SILVER ET

840 3129321124 Casein: A1A2 BB
Genetic Conditions: PT DT MT WT BH2T BH14T
PPR +43 95%R PTAT +0.2 98%R (04/26)
PTA +339M +3F +16P +174NM\$ 98%R (MACE)
PL +1.4 SCS +2.86 DPR -0.4 SCE +3.2 LIV -0.5

TRIANGLE ACRES DALLY PISCES

USA 68130183
Genetic Conditions: PT DT MT WT BH2T BH14T
09/04 '3E-92' E94 E93 E92 E92 E92 (07/20)
2-00 2 365 20490 4.3 9347 3.6 737
3-05 2 365 26800 4.3 1158 3.7 980
4-09 3 365 29770 4.4 1322 3.6 1075
6-07 2 365 24240 4.4 1057 3.8 919
LIFE 2110 142480 6319 5255



Triangle Acres Dally Pisces 3E-92

Dam of Lot 18

KULP GEN PRONTO DALLY ET *TM

USA 197305 PPR -24

TRIANGLE ACRES PZ PEACE ET

USA 947948 09/03 '2E-91' EEEEE (08/15)
2-08 2 310 16820 4.3 730 3.4 570
3-07 2 365 27980 4.0 1114 3.3 926
4-10 2 311 22300 4.3 970 3.0 677
5-10 2 365 25610 4.1 1059 3.2 832
7-00 2 365 25550 4.2 1068 3.4 875
8-03 2 365 26560 4.3 1139 3.3 887
LIFE 2299 156350 6606 5205

LOT 19 TRIANGLE ACRES SZLG PHIZZLE

DOB 04/09/2024 Tattoo: K983
Reg. 840 3268894319

Bred 11/20; Due 9/1 to Tank

LA RAINBOW SWEET SIZZLING

840 3221039057
Genetic Conditions: PT DT MT WT BH2T BH14T
PPR -19 77%R PTAT +0.8 76%R (04/26)
PTA -250M -28F -4P -44NM\$ 86%R (GEN)
PL +1.5 SCS +2.81 DPR -1.8 SCE +3.3 LIV -0.4

TRIANGLE ACRES S PHRINGE ET

840 3268894317
03/09 'V85' V87 V86 V85 +83 V85 (08/25)
2-04 2 320 17470 4.7 816 3.6 632
3-04 2 394 22834 4.4 1006 3.6 820



Triangle Acres Pz Peace ET 2E-91

3rd Dam of Lot 19

LA RAINBOW SWEET SILVER ET

840 3129321124 PPR +43

TRIANGLE ACRES DALLY PISCES

USA 68130183 09/04 '3E-92' EEEEE (07/20)
4-09 3 365 29770 4.4 1322 3.6 1075
3-05 2 365 26800 4.3 1158 3.7 980
LIFE 2110 142480 6319 5255

3rd - 7th Dams:

Triangle Acres Pz Peace ET 2E-91

3-07	2	365	27980	4.0	1114	3.3	926
LIFE	2299	156350	6606	5205			

Triangle Acres Po Poetry ET 2E-92 *Cert*

Triangle Acres Coll Polly E92 *Cert*

Triangle Acres Patty *TM 2E-90 *Elite*

Triangle Acres Pats Poppy V86 *Supr Brood Cow*

LOT 20 TRIANGLE ACRES JRDY PURELY

DOB 05/07/2022 Tattoo: K923
Reg. 840 3227794885

03/03 'V85' V86 V87 V85 +83 +84 (08/25) *Cert*

2-01 2 365 27250 3.8 1031 3.4 937
3-07 2 120 7568 3.9 297 3.6 272 Inc

Last test: 76 lbs., 162 SCC
Fresh 12/29; Bred 4/25 to Ignite

TROUT HILLTOP JORDY ETV P

840 3215414562 Casein: A2A2 BB
Genetic Conditions: PC DT MT WT BH2T BH14T
PPR +81 90%R PTAT +0.2 94%R (04/26)
PTA +508M +30F +22P +78NM\$ 96%R (MACE)
PL -0.6 SCS +3.07 DPR +2.2 SCE +4.6 LIV +0.3

TRIANGLE ACRES PURSILVER ET

840 3205318060
Genetic Conditions: PT DT MT WT BH2T BH14T
02/11 'V85' V85 V86 V85 V85 (04/23)
2-00 2 305 22200 4.1 913 3.5 781
3-03 2 229 15160 3.9 585 3.6 550

3rd - 7th Dams:

Triangle Acres Pz Peace ET 2E-91
Triangle Acres Po Poetry ET 2E-92 *Cert*
Triangle Acres Coll Polly E92 *Cert*
Triangle Acres Patty *TM 2E-90 *Elite*
Triangle Acres Pats Poppy V86 *Supr Brood Cow*

LA RAINBOW SWEET SILVER ET

840 3129321124 PPR +43

TRIANGLE ACRES DALLY PISCES

USA 68130183 09/04 '3E-92' EEEEE (07/20)
4-09 3 365 29770 4.4 1322 3.6 1075
LIFE 2110 142480 6319 5255

LOT 21 TRIANGLE ACRES TG PASSPORT

DOB 07/06/2024 Tattoo: K987
Reg. 840 3268894313

Bred 4/30 to First Choice/Angus

V B JONMAR TOP GUN

USA 68217549 Casein: A2A2 BB
Genetic Conditions: PT DT MT WT BH2T BH14T
PPR +23 81%R PTAT -0.3 84%R (04/26)
PTA +546M -4F +7P +57NM\$ 90%R (GEN)
PL +3.9 SCS +2.95 DPR +0.3 SCE +3.7 LIV +3.7

TRIANGLE ACRES JRDY PURELY

840 3227794885
03/03 'V85' V86 V87 V85 +83 +84 (08/25) *Cert*
2-01 2 365 27250 3.8 1031 3.4 937

3rd - 5th Dams:

Triangle Acres Dally Pisces 3E-92
Triangle Acres Pz Peace ET 2E-91
Triangle Acres Po Poetry ET 2E-92 *Cert*

6th - 8th Dams:

Triangle Acres Coll Polly E92 *Cert*
Triangle Acres Patty *TM 2E-90 *Elite*
Triangle Acres Pats Poppy V86 *Supr Brood Cow*

TROUT HILLTOP JORDY ETV P

840 3215414562 PPR +81

TRIANGLE ACRES PURSILVER ET

840 3205318060 02/11 'V85' VVVV (04/23)
2-00 2 305 22200 4.1 913 3.5 781
3-03 2 229 15160 3.9 585 3.6 550

LOT 22 TRIANGLE ACRES SKPR PINKY

DOB 10/05/2023 Tattoo: K964
Reg. 840 3268894273

02/04 '+83' +82 V85 +81 +84 +83 (02/26)

1-11 2 225 12260 4.0 489 3.3 401 Inc

Last test: 57 lbs., 93 SCC
Fresh 9/22; Bred 4/28 to Angus

LA RAINBOW SWEET SKIPPER

840 3221039070 Casein: A1A2
Genetic Conditions: PT DT MT WT BH2T BH14T
PPR -28 76%R PTAT +0.8 77%R (04/26)
PTA -339M -27F -6P -316NM\$ 84%R (GEN)
PL -1.0 SCS +2.75 DPR -0.1 SCE +3.5 LIV -1.3

TRIANGLE ACRES PRPR PLATED

840 3225427778
02/11 '+84' +82 V85 +83 +83 V85 (07/24)
2-02 2 365 21760 4.3 935 3.6 781
3-04 2 314 18110 3.9 713 3.6 659

3rd - 7th Dams:

Triangle Acres Pz Peace ET 2E-91
Triangle Acres Po Poetry ET 2E-92 *Cert*
Triangle Acres Coll Polly E92 *Cert*
Triangle Acres Patty *TM 2E-90 *Elite*
Triangle Acres Pats Poppy V86 *Supr Brood Cow*

TRIANGLE ACRES FACT PROSPER*TM

840 3135193068 PPR +74

TRIANGLE ACRES PLATINUM ET

840 3135193050 03/03 'E90' EVVEE (06/19)
2-01 2 353 19150 4.7 899 3.7 712
3-03 2 305 23680 4.2 993 3.7 877
4-05 2 311 24970 5.1 1261 3.8 941
5-05 2 327 23280 4.5 1041 3.8 879

LOT 23 TRIANGLE ACRES OMLLY PIZZA

DOB 01/07/2022 Tattoo: K912
Reg. 840 3227794922

03/07 'V88' V88 E91 V86 V86 V88 (08/25)

1-11 2 365 22560 4.5 1014 3.7 832

Sells Fresh

3rd - 8th Dams:

Triangle Acres Crl Porleeza +82

Triangle Acres Pz Peace ET 2E-91

Triangle Acres Po Poetry ET 2E-92 *Cert*

Triangle Acres Coll Polly E92 *Cert*

Triangle Acres Patty *TM 2E-90 *Elite*

Triangle Acres Pats Poppy V86 *Supr Brood Cow*

O MALLEY

4427424483 Casein: A2A2 BB
Genetic Conditions: PT DT MT WT BH2T BH14T
PPR +107 92%R PTAT +0.5 95%R (04/26)
PTA +380M +39F +41P +216NM\$ 96%R (MACE)
PL -0.8 SCS +3.19 DPR +0.1 SCE +3.1 LIV +0.0

TRIANGLE ACRES AI PARMESAN

USA 68194370 Casein: A1A2
06/00 '2E'90' V88 E92 V88 E90 E91 (07/24)
2-02 2 365 21653 5.0 1073 3.5 767
3-06 2 296 25610 4.3 1105 3.3 856
4-06 2 365 33290 4.2 1392 3.3 1107
5-11 2 365 31540 4.7 1468 3.2 1014
LIFE 1704 132080 5836 4427



Triangle Acres AI Parmesan 2E-90

Dam of Lot 23

R HART ATLANTAS ALL-IN ETV *TM

840 3132541841 PPR +24

TRIANGLE ACRES THNDR PARMA

840 3125428880 03/03 'V87' VVVV (08/18)
1-10 2 365 20570 4.3 894 3.6 735
3-00 2 340 18810 4.6 858 3.7 701
4-01 2 305 2500 4.9 1226 3.5 880
5-03 2 364 24660 4.6 1140 3.8 948

LOT 24 TRIANGLE ACRES PEPPERJACK

DOB 12/26/2022 Tattoo: K937
Reg. 840 3268894334

02/08 'V86' V85 V87 V86 +84 V86 (08/25)

2-01 2 305 20700 4.4 920 3.5 721

Fresh 1/26/25; Bred 11/2; Due 8/13 to Playmaker

5th - 8th Dams:

Triangle Acres Po Poetry ET 2E-92 *Cert*

Triangle Acres Coll Polly E92 *Cert*

Triangle Acres Patty *TM 2E-90 *Elite*

Triangle Acres Pats Poppy V86 *Supr Brood Cow*

HILLTOP ACRES D KICKSTART ET

840 3138790773 Casein: A1A2 BB
Genetic Conditions: PT DT MT WT BH2T BH14T
PPR +28 91%R PTAT +0.7 96%R (04/26)
PTA -589M +12F +0P +9NM\$ 96%R (MACE)
PL +1.0 SCS +3.11 DPR -1.3 SCE +3.0 LIV +0.7

TRIANGLE ACRES AI PARMESAN

USA 68194370 Casein: A1A2
06/00 '2E-90' V88 E92 V88 E90 E91 (07/24)
2-02 2 365 21653 5.0 1073 3.5 767
3-06 2 296 25610 4.3 1105 3.3 856
4-06 2 365 33290 4.2 1392 3.3 1107
5-11 2 365 31540 4.7 1468 3.2 1014
LIFE 1704 132080 5836 4427

3rd - 4th Dams:

Triangle Acres Crl Porleeza +82

Triangle Acres Pz Peace ET 2E-91

3-07 2 365 27980 4.0 1114 3.3 926

LIFE 2299 156350 6606 5205

R HART ATLANTAS ALL-IN ETV *TM

840 3132541841 PPR +24

TRIANGLE ACRES THNDR PARMA

840 3125428880 03/03 'V87' VVVV (08/18)
1-10 2 365 20570 4.3 894 3.6 735
3-00 2 340 18810 4.6 858 3.7 701
4-01 2 305 2500 4.9 1226 3.5 880
5-03 2 364 24660 4.6 1140 3.8 948

LOT 25 TRIANGLE ACRES W SWEET TWIN

DOB 11/28/2019
Reg. 840 3205318035

05/09 'V87' V87 E90 V86 V85 V86 (08/25)

2-02	2	365	26310	4.0	1048	3.5	917
3-10	2	312	23360	4.0	943	3.7	859
4-10	2	365	31350	4.0	1250	3.7	1159
6-03	2	50	2977	3.9	116	3.2	95 Inc

Last test: 68 lbs. ; 22 SCC
Fresh 3/26; Sells Open

3rd - 6th Dams:

Triangle Acres Po Poetry ET 2E-92 *Cert*
Triangle Acres Coll Polly E92 *Cert*
Triangle Acres Patty *TM 2E-90 *Elite*
Triangle Acres Pats Poppy V86 *Supr Brood Cow*

MANIS GLENN WHISKEY ET *TM

USA 68133750 Casein: A2A2 BB
Genetic Conditions: *TM PT DT WT BH2T BH14T
PPR -38 94%R PTAT +0.1 97%R (04/26)
PTA +199M -17F +5P -273NMS 97%R (MACE)
PL -2.3 SCS +3.31 DPR -3.0 SCE +3.7 LIV -0.7

TRIANGLE ACRES PSALM ET

840 3130408091
07/00 '3E-90' E90 E90 E90 E90 E91 (09/22)
2-00 2 365 22220 4.6 1017 3.7 824
3-02 2 312 21050 4.8 1020 3.7 783
4-02 2 325 26870 4.6 1240 3.5 940
5-03 2 318 25790 4.1 1048 3.5 890
6-03 2 365 28940 3.8 1103 3.3 948
LIFE 1945 138700 6031 4887



Triangle Acres Pz Peace ET 2E-91

Grandam of Lot 25

KULP GEN PRONTO DALLY ET *TM

USA 197305 PPR -24

TRIANGLE ACRES PZ PEACE ET

USA 947948 09/03 '2E-91' EEEEE (08/15)
3-07 2 365 27980 4.0 1114 3.3 926
8-03 2 365 26560 4.3 1139 3.3 887
LIFE 2299 156350 6606 5205

LOT 26 TRIANGLE ACRES SWEETS SASSY

DOB 10/08/2023 Tattoo: K965
Reg. 840 3268894274

02/04 'V86' V86 V88 +81 V85 V86 (02/26)

2-01	2	169	9965	3.7	372	3.3	328 Inc
------	---	-----	------	-----	-----	-----	---------

Last test: 41 lbs., 20 SCC
Fresh 11/17; Bred 4/24 to Iroc

3rd - 7th Dams:

Triangle Acres Pz Peace ET 2E-91
3-07 2 365 27980 4.0 1114 3.3 926
LIFE 2299 156350 6606 5205
Triangle Acres Po Poetry ET 2E-92 *Cert*
Triangle Acres Coll Polly E92 *Cert*
Triangle Acres Patty *TM 2E-90 *Elite*
Triangle Acres Pats Poppy V86 *Supr Brood Cow*

TRIANGLE ACRES PHNTM JASPER

840 3225427761
Genetic Conditions: PT DT MT WT BH2T BH14T
PPR +11 68%R PTAT +0.3 73%R (04/26)
PTA -661M +0F -8P +22NMS 72%R (GEN)
PL +2.0 SCS +2.99 DPR +1.0 LIV +2.1

TRIANGLE ACRES W SWEET TWIN

840 3205318035
05/09 'V87' V87 E90 V86 V85 V86 (08/25)
2-02 2 365 26310 4.0 1048 3.5 917
3-10 2 312 23360 4.0 943 3.7 859
4-10 2 365 31350 4.0 1250 3.7 1159



Triangle Acres Po Poetry ET 2E-92

4th Dam of Lot 26

MANIS GLENN WHISKEY ET *TM

USA 68133750 PPR -38

TRIANGLE ACRES PSALM ET

840 3130408091 07/00 '3E-90' EEEEE (09/22)
6-03 2 365 28940 3.8 1103 3.3 948
4-02 2 325 26870 4.6 1240 3.5 940
LIFE 1945 138700 6031 4887

LOT 27 TRIANGLE ACRES WF POPROCKS

DOB 09/01/2023 Tattoo: K960
Reg. 840 3268894289

02/05 'V86' V88 V86 +84 V85 V86 (02/26)

2-00 2 227 13735 4.2 581 3.7 513 Inc

Last test: 52 lbs., 100 SCC
Fresh 9/20; Bred 4/26 to Tank

3rd - 9th Dams:

Triangle Acres Pandora ET 3E-94 *Cert*

608 2 365 34780 4.3 1499 3.4 1172

LIFE 2270 173230 7091 5931

5X Nominated All-American in milking form!

HM All-American Senior 2-Year-Old '18

Intermediate Champion, Midwest Spring Show '19

3rd & 1st Bred & Owned, WDE '18

Intermediate Champion, IL State Fair '18

Triangle Acres Dally Pisces 3E-92

Triangle Acres Pz Peace ET 2E-91

BROWN HEAVEN WINNINGFORMULA ET

CAN 107362998 Casein: A2A2 AB

Genetic Conditions: PT DT MT WT BH2T BH14T

PPR -93 93%R PTAT +0.3 96%R (04/26)

PTA -873M -31F -32P -509NM\$ 97%R (MACE)

PL -1.7 SCS +3.15 DPR -0.5 SCE +4.4 LIV -1.4

TRIANGLE ACRES JUKE PUNKROCK

840 3205318044

Genetic Conditions: PT DT MT WT BH2T BH14T

02/08 'V87' V88 V86 V86 V87 V88 (09/22)

2-02 2 365 24091 4.7 1139 3.6 869

Triangle Acres Po Poetry ET 2E-92 *Cert*

Triangle Acres Coll Polly E92 *Cert*

Triangle Acres Patty *TM 2E-90 *Elite*

Triangle Acres Pats Poppy V86 *Supr Brood Cow*



Triangle Acres Fls Paramour 2E-90

Grandam of Lot 27

TRIANGLE ACRES CARTER JUKE

840 3139214232 PPR -52

TRIANGLE ACRES FLS PARAMOUR

840 3145618174 06/08 '2E-90' EEVE (04/24) *Cert*

2-03 2 365 26990 4.2 1140 3.3 904

3-10 2 365 33132 4.1 1344 3.5 1171

5-09 2 305 23280 4.3 1001 3.6 849

7-02 2 305 21910 3.8 825 3.4 749

LIFE 1935 136990 5793 4872

1st Senior 2-Year-Old, Midwest Quality Colors '20

5th Senior 2-Year-Old, IL State Show '20

LOT 28 TRIANGLE ACRES PRESLEY

DOB 03/05/2023 Tattoo: K944
Reg. USA 68226405

02/11 'V86' V87 V88 V85 +84 V87 (02/26)

2-01 305d ME 26,636M 1050F 905P

Last test: 56 lbs., 123 SCC
Fresh 4/14/25; Bred 5/17 to Netflix

3rd - 9th Dams:

Triangle Acres Pandora ET 3E-94 *Cert*

608 2 365 34780 4.3 1499 3.4 1172

LIFE 2270 173230 7091 5931

HM All-American Senior 2-Year-Old '18

Triangle Acres Dally Pisces 3E-92

Triangle Acres Pz Peace ET 2E-91

TRIANGLE ACRES PHNTM JASPER

840 3225427761

Genetic Conditions: PT DT MT WT BH2T BH14T

PPR +11 68%R PTAT +0.3 73%R (04/26)

PTA -661M +0F -8P +22NM\$ 72%R (GEN)

PL +2.0 SCS +2.99 DPR +1.0 LIV +2.1

TRIANGLE ACRES LA POSH

USA 68213185

02/00 'V85' V85 +84 +84 +84 +84 V85 (04/23)

Triangle Acres Po Poetry ET 2E-92 *Cert*

Triangle Acres Coll Polly E92 *Cert*

Triangle Acres Patty *TM 2E-90 *Elite*

Triangle Acres Pats Poppy V86 *Supr Brood Cow*



Triangle Acres Pandora 3E-94

3rd Dam of Lot 27 & 28

BMG BREEDERS LOST ART ET

USA 68170102 PPR +22

TRIANGLE ACRES PARMALEE

USA 68198826 02/04 '+83' VV+++82 (07/21)

LOT 29 TRIANGLE ACRES FC PHLAIR

DOB 08/13/2022 Tattoo: K930
Reg. 840 3227794896

03/06 'V85' V87 V86 +84 +83 V86 (02/26)

2-00 2 305 17170 4.5 770 3.6 621
3-07 2 38 2687 4.3 115 3.2 85 Inc

Last test: 78 lbs., 23 SCC
Fresh 3/28

3rd - 7th Dams:

Triangle Acres Pz Peace ET 2E-91

Triangle Acres Po Poetry ET 2E-92 *Cert*

Triangle Acres Coll Polly E92 *Cert*

Triangle Acres Patty *TM 2E-90 *Elite*

Triangle Acres Pats Poppy V86 *Supr Brood Cow*

BROWN HEAVEN C FIRST CHOICE ET

CAN 111164959 Casein: A2A2 AB
Genetic Conditions: PT DT MT WT BH2T BH14T
PPR -71 87%R PTAT -0.1 93%R (04/26)
PTA -587M -32F -21P -403NM\$ 94%R (GEN)
PL -1.2 SCS +3.18 DPR -1.1 SCE +3.9 LIV +0.7

TRIANGLE ACRES PHANCY ET

840 3130408098
Genetic Conditions: PT DT MT WT BH2T BH14C
04/10 'V87' E91 V86 V85 E90 +84 (07/20)
2-04 2 333 18690 4.4 815 3.5 655
3-05 2 314 22910 4.5 1021 3.4 772
4-05 2 300 20770 4.8 1002 3.3 686
5-06 2 365 27543 4.5 1251 3.3 918
6-10 2 365 20990 4.8 1013 3.4 705
LIFE 1936 123660 5668 4176



Triangle Acres Phancy ET V87

Dam of Lot 29

JO-DEE NEMO RICHARD ET

USA 68155420 PPR -15

TRIANGLE ACRES DALLY PISCES

USA 68130183 09/04 '3E-92' EEEEE (07/20)
4-09 3 365 29770 4.4 1322 3.6 1075
LIFE 2110 142480 6319 5255

LOT 30 TRIANGLE ACRES SZZG PHEVER

DOB 09/02/2024 Tattoo: K991
Reg. 840 3268894303

Bred 9/22; Due 7/4 to Playmaker

3rd - 8th Dams:

Triangle Acres Dally Pisces 3E-92

Triangle Acres Pz Peace ET 2E-91

Triangle Acres Po Poetry ET 2E-92 *Cert*

Triangle Acres Coll Polly E92 *Cert*

Triangle Acres Patty *TM 2E-90 *Elite*

Triangle Acres Pats Poppy V86 *Supr Brood Cow*

LA RAINBOW SWEET SIZZLING

840 3221039057
Genetic Conditions: PT DT MT WT BH2T BH14T
PPR -19 77%R PTAT +0.8 76%R (04/26)
PTA -250M -28F -4P -44NM\$ 86%R (GEN)
PL +1.5 SCS +2.81 DPR -1.8 SCE +3.3 LIV -0.4

TRIANGLE ACRES FC PHLAIR

840 3227794896
03/06 'V85' V87 V86 +84 +83 V86 (02/26)
2-00 2 305 17170 4.5 770 3.6 621



Triangle Acres Szzg Phever

Sells as Lot 30

BROWN HEAVEN C FIRST CHOICE ET

CAN 111164959 PPR -71

TRIANGLE ACRES PHANCY ET

840 3130408098 04/10 'V87' EVVE+84 (07/20)
5-06 2 365 27543 4.5 1251 3.3 918
3-05 2 314 22910 4.5 1021 3.4 772
LIFE 1936 123660 5668 4176

LOT 31 TRIANGLE ACRES WO PAPAZZI

DOB 10/18/2019 Tattoo: K832
Reg. 840 3205318032

05/10 'V88' V88 E90 V85 V86 V88 (08/25)

2-03	2	365	24280	4.3	1043	3.5	846
4-03	2	365	28850	4.2	1224	3.6	1050
5-05	2	391	30503	3.8	1168	3.5	1062

Sells Dry
Bred 9/1; Due 6/23 to Sasuke

3rd - 9th Dams:

Sun-Made KB Vigor Peach ET 2E-92

7-11	2	365	27940	4.7	1323	3.7	1032
LIFE	2526	174860	7803	6479			

Triangle Acres Post It Twin E90

3-04	2	365	30170	4.5	1366	3.5	1070
------	---	-----	-------	-----	------	-----	------

Triangle Acres Pottery ET E92 *Cert*

Triangle Acres Po Poetry ET 2E-92 *Cert*

Triangle Acres Coll Polly E92 *Cert*

Triangle Acres Patty *TM 2E-90 *Elite*

Triangle Acres Pats Poppy V86 *Supr Brood Cow*

HILLS VALLEY R WATCHOUT ET

840 3132145767 Casein: A2A2 AB
Genetic Conditions: PT DT MT WT BH2T BH14C
PPR -59 82%R PTAT -0.1 86%R (04/26)
PTA -186M -19F -27P -239NM\$ 88%R (GEN)
PL +1.4 SCS +2.99 DPR +1.6 SCE +3.7 LIV -1.1

TRIANGLE ACRES DRK POPULAR

840 3125428877
Genetic Conditions: PT DT MT WT BH2C BH14T
06/02 'V86' V86 V87 V87 V85 V86 (07/21)
2-02 2 365 22650 3.8 854 3.5 804
3-04 2 335 25810 3.2 832 3.7 953
4-05 2 297 16070 4.1 660 3.7 602
5-04 2 305 26370 3.6 939 3.6 939
LIFE 1577 111870 4060 4118



Sun-Made KB Vigor Peach ET 2E-92

3rd Dam of Lot 31

SWITZER TALS ALIMONY DIRK ET

USA 68147126 PPR -11

TRIANGLE ACRES BK POPLAR ET

USA 68149804 03/07 'V88' VVVVE90 (11/16) *Cert*
2-01 2 342 21130 4.4 922 3.8 802
3-02 3 365 28920 4.1 1175 3.8 1105
4-08 2 305 19580 4.6 894 3.8 742

LOT 32 TRIANGLE ACRES SMRI PEPPA

DOB 01/25/2022 Tattoo: K913
Reg. 840 3227794924

03/07 'V86' V86 V86 V85 V85 V86 (08/25)

2-06	2	365	22400	4.5	1012	3.8	854
3-11	2	111	9691	3.8	364	3.1	331 Inc

Last test: 82 lbs., 76 SCC
Fresh 11/15; Bred 4/27 to Iroc

7th - 10th Dams:

Triangle Acres BK Poplar ET V88

3-02	3	365	28920	4.1	1175	3.8	1105
------	---	-----	-------	-----	------	-----	------

Sun-Made KB Vigor Peach ET 2E-92

7-11	2	365	27940	4.7	1323	3.7	1032
LIFE	2526	174860	7803	6479			

Triangle Acres Post It Twin E90

3-04	2	365	30170	4.5	1366	3.5	1070
------	---	-----	-------	-----	------	-----	------

Triangle Acres Pottery ET E92 *Cert*

Triangle Acres Po Poetry ET 2E-92 *Cert*

Triangle Acres Coll Polly E92 *Cert*

Triangle Acres Patty *TM 2E-90 *Elite*

Triangle Acres Pats Poppy V86 *Supr Brood Cow*

AMBER RAE GET LUCKY SAMURI ET

840 3150630037
Genetic Conditions: PT DT MT WT BH2T BH14T
PPR +119 76%R PTAT -0.2 85%R (04/26)
PTA +1646M +61F +52P +489NM\$ 82%R (GEN)
PL -1.1 SCS +3.15 DPR -1.0 LIV -2.7

TRIANGLE ACRES WO PAPAZZI

840 3205318032
05/10 'V88' V88 E90 V85 V86 V88 (08/25)
2-03 2 365 24280 4.3 1043 3.5 846
4-03 2 365 28850 4.2 1224 3.6 1050
5-05 2 391 30503 3.8 1168 3.5 1062



Triangle Acres BK Poplin ET

Full Sister to 3rd Dam of Lot 32

HILLS VALLEY R WATCHOUT ET

840 3132145767 PPR -59

TRIANGLE ACRES DRK POPULAR

840 3125428877 06/02 'V86' VVVV (07/21)
5-04 2 305 26370 3.6 939 3.6 939
3-04 2 335 25810 3.2 832 3.7 953
LIFE 1577 111870 4060 4118

LOT 33 TRIANGLE ACRES SLVR PECAN

DOB 10/23/2020 Tattoo: K871
Reg. USA 68209854

4-10 2 240 15661 3.6 562 3.5 548 Inc

Last test: 58 lbs., 23 SCC
Fresh 9/7; Bred 11/7; Due 8/19 to Ignite

4th - 6th Dams:

Triangle Acres Se Prayer ET E90 EX-MS
5-07 2 365 30450 4.2 1291 3.4 1023
LIFE 1967 131750 5481 4832

Triangle Acres Patty *TM 2E-90 *Elite*

Triangle Acres Pats Poppy V86 *Supr Brood Cow*

LA RAINBOW SWEET SILVER ET

840 3129321124 Casein: A1A2 BB
Genetic Conditions: PT DT MT WT BH2T BH14T
PPR +43 95%R PTAT +0.2 98%R (04/26)
PTA +339M +3F +16P +174NM\$ 98%R (MACE)
PL +1.4 SCS +2.86 DPR -0.4 SCE +3.2 LIV -0.5

TRIANGLE ACRES GL PISTACHIO

840 3139214234
Genetic Conditions: PT DT MT WT BH2T BH14C
03/08 '+81' G78 V85 G77 +82 +82 (12/20)
2-04 2 365 26100 3.7 975 3.2 832
3-06 2 305 26950 4.1 1094 3.5 933

3rd Dam:

Triangle Acres Pronto Pecan V89 EX-MS
7-10 3 365 32570 4.4 1440 3.7 1193
LIFE 2183 165650 7664 6269

BMG LUST GET LUCKY ET *TM

USA 68170100 PPR +73

TRIANGLE ACRES PRALINE TWIN

USA 68145586 06/06 'V87' EEVV (06/19)
2-02 2 330 21990 4.2 919 3.5 769
3-03 3 327 28100 4.2 1167 3.3 928
4-04 2 365 31190 3.9 1226 3.5 1080
5-08 2 365 33180 3.9 1289 3.5 1150
LIFE 1748 140350 5732 4912

LOT 34 TRIANGLE ACRES PEANUTBRITL

DOB 12/06/2023 Tattoo: K973
Reg. 840 3268894322

Bull bred 8/23; Due in June to Triangle Acres Szlng
Peril (*Sizzling x Sonic Perrfect x Tequila Perhaps x Vigor Pert*)

5th - 7th Dams:

Triangle Acres Se Prayer ET E90 EX-MS
5-07 2 365 30450 4.2 1291 3.4 1023
LIFE 1967 131750 5481 4832

Triangle Acres Patty *TM 2E-90 *Elite*

Triangle Acres Pats Poppy V86 *Supr Brood Cow*

LA RAINBOW SWEET SKIPPER ET

840 3221039070 Casein: A1A2 BB
Genetic Conditions: PT DT MT WT BH2T BH14T
PPR -28 76%R PTAT +0.8 77%R (04/26)
PTA -339M -27F -6P -316NM\$ 84%R (GEN)
PL -1.0 SCS +2.75 DPR -0.1 SCE +3.5 LIV -1.3

TRIANGLE ACRES PIERRE PEANUT

840 3205318023
04/10 'V86' V87 E91 +80 +84 V86 (07/24)
2-01 2 365 25490 4.1 1043 3.4 868
3-02 2 336 27780 4.1 1139 3.4 943
4-03 2 334 27940 4.2 1172 3.3 916
5-04 2 321 25320 4.2 1064 3.2 821
LIFE 1356 106530 4418 3548

3rd - 4th Dams:

Triangle Acres Praline Twin V87
5-08 2 365 33180 3.9 1289 3.5 1150
LIFE 1748 140350 5732 4912
Triangle Acres Pronto Pecan V89 EX-MS
LIFE 2183 165650 7664 6269

TRIANGLE ACRES HLTN PIERRE

840 3145618180 PPR +57

TRIANGLE ACRES GL PISTACHIO

840 3139214234 03/08 '+81' GVG++ (12/20)
2-04 2 365 26100 3.7 975 3.2 832
3-06 2 305 26950 4.1 1094 3.5 933

LOT 35 TRIANGLE ACRES SLVR PATHWAY

DOB 11/11/2019 Tattoo: K834
Reg. 840 3205318034

05/09 '2E-90' E92 E93 E91 V88 V88 (08/25)

2-00 2 365 27510 3.6 1004 3.5 950
3-02 2 365 26930 4.3 1166 3.4 915
4-08 2 365 30750 4.8 1483 3.4 1046
6-03 2 62 6217 5.1 317 3.0 189 Inc

Last test: 78 lbs., 57 SCC
Fresh 3/14

3rd Senior 3-Year-Old, Midwest Quality Colors '23

5th - 7th Dams:

New View D Pastel ET V88 EX-MS

2-05 2 365 21630 3.8 822 3.4 739

1st Senior 2-Year-Old, MD State Fair '07

Top Acres Coll Party 2E93 *Cert*

2-00 2 365 28950 5.9 1708 3.5 999

All-American Junior 3-Year-Old '03

All-American Spring Calf '00

Top Acres Pre Para E90 *Cert*

4-05 2 305 26310 5.2 1377 3.1 803

1st Senior 3-Year-Old, OH State Fair '01

LA RAINBOW SWEET SILVER ET

840 3129321124 Casein: A1A2 BB
Genetic Conditions: PT DT MT WT BH2T BH14T
PPR +43 95%R PTAT +0.2 98%R (04/26)
PTA +339M +3F +16P +174NM\$ 98%R (MACE)
PL +1.4 SCS +2.86 DPR -0.4 SCE +3.2 LIV -0.5

SUN-MADE TA SEA PASSAGE ET

840 3135193082
Genetic Conditions: PT DT MT WT BH2T BH14T
03/10 '+84' E92 V87 G75 +82 +83 (07/20)
2-00 2 357 24280 3.4 814 3.4 914
3-02 2 358 29780 3.6 1062 3.4 1016

Top Acres Jway Parasol ET V86 *Cert*

3-09 2 339 28780 5.7 1631 3.3 964

Top Acres Dotson Paisley 2E90 *Elite*Supr Brood Cow*

6-02 2 365 34910 4.6 1618 3.6 1244

National Total Performance Winner '95



Triangle Acres Slvr Pathway 2E-90

Sells as Lot 35

CUTTING EDGE SEAMAN *TM

USA 68137657 PPR -42

I & M CH ZEUS PAULINE ET

USA 954142 06/06 '2E-93' EEEEE (09/13)

2-04 2 247 17910 4.14 784 3.3 586

3-03 2 365 34900 4.0 1396 3.1 1093

5-08 2 365 40840 3.7 1513 3.1 1249

LIFE 1299 122230 4683 3871

2nd Junior 2-Year-Old, NY State Fair '09

3rd Junior 2-Year-Old, Eastern Nat'l '09

LOT 36 TRIANGLE ACRES KS PASSWORD

DOB 02/04/2023 Tattoo: K941
Reg. 840 3268894339

02/06 'V85' +83 V86 +84 +84 V86 (08/25)

2-01 305d ME 22,618M 961F 799P

Sells Dry

Bred 2/1; Due 11/14 to Magnum

HILLTOP ACRES D KICKSTART ET

840 3138790773 Casein: A1A2 BB
Genetic Conditions: PT DT MT WT BH2T BH14T
PPR +28 91%R PTAT +0.7 96%R (04/26)
PTA -589M +12F +0P +9NM\$ 96%R (MACE)
PL +1.0 SCS +3.11 DPR -1.3 SCE +3.0 LIV +0.7

2nd - 9th Dams:

Sun-Made Ta Sea Passage ET +84

3-02 2 358 29780 3.6 1062 3.4 1016

I & M Ch Zeus Pauline ET 2E-93

5-08 2 365 40840 3.7 1513 3.1 1249

New View D Pastel ET V88 EX-MS

2-05 2 365 21630 3.8 822 3.4 739

Top Acres Coll Party 2E93 *Cert*

2-00 2 365 28950 5.9 1708 3.5 999

Top Acres Pre Para E90 *Cert*

Top Acres Jway Parasol ET V86 *Cert*

Top Acres Dotson Paisley 2E90 *Elite

Supr Brood Cow

LOT 37 TRIANGLE ACRES DN PARAMOUNT

DOB 07/20/2024 Tattoo: K988
Reg. 840 3268894312

Bred 4/29 to Angus

HF DESIGN ET

840 3218804016 Casein: A2A2 AB
Genetic Conditions: PT DT MT WT BH2T BH14T
PPR +12 87%R PTAT +0.6 93%R (04/26)
PTA +41M -1F +8P -120NM\$ 95%R (MACE)
PL -1.9 SCS +3.16 DPR -1.5 SCE +3.8 LIV -0.4

Dam of Lots 36 & 37

TRIANGLE ACRES SLVR PATHWAY

840 3205318034 05/09 '2E-90' EEEV (08/25)

2-00 2 365 27510 3.6 1004 3.5 950

3-02 2 365 26930 4.3 1166 3.4 915

4-08 2 365 30750 4.8 1483 3.4 1046

LOT 38 TRIANGLE ACRES SLAM PHOENIX

DOB 09/01/2022 Tattoo: K931
Reg. 840 3227794897

02/11 'V88' V87 V88 V88 V87 V88 (08/25)

2-02 2 365 27330 3.6 987 3.2 888

Last test: 62 lbs., 100 SCC
Bred 2/22; Due 12/5 to Playmaker/Angus

2nd Fall Calf, Midwest Spring Show '23
3rd Fall Calf, IL State Fair '23

6th - 7th Dams:

New View D Pastel ET V88 EX-MS

Top Acres Coll Party 2E93 *Cert*

Top Acres Pre Para E90 *Cert*

Top Acres Jway Parasol ET V86 *Cert*

Top Acres Dotson Paisley 2E90 *Elite*Supr Brood Cow*

TWINKLE-HILL SBLAMBORGHINI *TM

840 3129317136

Genetic Conditions: *TM *TD PT MT WT BH2T BH14T
PPR +88 92%R PTAT -0.8 96%R (04/26)
PTA +1262M +36F +35P +466NM\$ 97%R (MACE)
PL +1.4 SCS +3.03 DPR +0.9 SCE +2.4 LIV -1.0

SUN-MADE TA BIV PALM ET

840 3135193081

Genetic Conditions: PT DT MT WT BH2T BH14T
04/10 '1E-90' E90 E90 V87 V88 E91 (07/21) *Cert*
2-00 2 365 27480 2.9 799 3.3 911
3-02 2 327 25490 2.9 741 3.2 821
4-03 2 365 29860 3.2 944 3.3 990



Triangle Acres Slam Phoenix

Sells as Lot 38

SCHERMA BLOOMING BIVER *TM

120094290070 PPR +36

I & M CH ZEUS PAULINE ET

USA 954142 06/06 '2E-93' EEEEE (09/13)

5-08 2 365 40840 3.7 1513 3.1 1249

LIFE 1299 122230 4683 3871

2nd Junior 2-Year-Old, NY State Fair '09

3rd Junior 2-Year-Old, Eastern Nat'l '09

LOT 39 TRIANGLE ACRES FC PHLOSSIE

DOB 11/01/2024 Tattoo: K994
Reg. 840 3268894307

Bred 5/19 to Daredevil

6th - 8th Dams:

I & M Ch Zeus Pauline ET 2E-93

5-08 2 365 40840 3.7 1513 3.1 1249

LIFE 1299 122230 4683 3871

New View D Pastel ET V88 EX-MS

Top Acres Coll Party 2E93 *Cert*

Top Acres Pre Para E90 *Cert*

Top Acres Jway Parasol ET V86 *Cert*

Top Acres Dotson Paisley 2E90 *Elite*Supr Brood Cow*

BROWN HEAVEN C FIRST CHOICE ET

CAN 111164959 Casein: A2A2 AB

Genetic Conditions: PT DT MT WT BH2T BH14T

PPR -71 87%R PTAT -0.1 93%R (04/26)

PTA -587M -32F -21P -403NM\$ 94%R (GEN)

PL -1.2 SCS +3.18 DPR -1.1 SCE +3.9 LIV +0.7

TRIANGLE ACRES SLAM PHOENIX

840 3227794897

02/11 'V88' V87 V88 V88 V87 V88 (08/25)

2-02 2 365 27330 3.6 987 3.2 888



I & Ch Zeus Pauline ET 2E-93

3rd Dam of Lot 39

TWINKLE-HILL SBLAMBORGHINI *TM

840 3129317136 PPR +88

SUN-MADE TA BIV PALM ET

840 3135193081 04/10 '1E-90' EEVVE (07/21) *Cert*

2-00 2 365 27480 2.9 799 3.3 911

3-02 2 327 25490 2.9 741 3.2 821

4-03 2 365 29860 3.2 944 3.3 990

LOT 40 TRIANGLE ACRES D TWISTER ET

DOB 12/07/2017 Tattoo: K758
Reg. 840 3145618182

07/08 '2E-90' E90 E91 V89 V88 E91 (08/25) *Cert*
2-05 2 365 26620 4.0 1071 3.5 925
3-11 2 365 32150 3.8 1223 3.4 1089
5-01 2 365 32560 4.1 1325 3.7 1196
6-08 2 365 30320 3.8 1152 3.5 1057
8-03 2 47 3902 3.5 135 3.0 116 Inc
LIFE 1802 143750 5739 5135

Last test: 89 lbs., 566 SCC
Fresh 3/19; Sells Open

3th - 5th Dams:

Cozy Nook Gordon Twyla ET V88 *Cert*

3-01 2 365 27840 4.5 1692 3.5 1306
LIFE 2362 201640 9046 7002

Sr 2 Honor Roll Milk & Protein '06

Fox Trail Prophet Tootsie V87

2-00 2 365 30520 3.4 1035 3.0 911

Fox Trail Toots 2E-90 *Elite*

4-09 2 365 42040 3.6 1505 3.1 1318

HILLTOP ACRES B DAREDEVIL ET

840 3012559129 Casein: A2A2 BB
Genetic Conditions: PT DT MT WT BH2T BH14T
PPR -40 97%R PTAT +0.6 99%R (04/26)
PTA +69M -27F -5P -137NM\$ 99%R (MACE)
PL -0.2 SCS +3.33 DPR -3.4 SCE +3.2 LIV -2.5

COZY NOOK BRKGS TERRIFIC ET

USA 68158661
Genetic Conditions: PT DT MT WT BH2C BH14T
07/10 '3E-91' E93 E92 E92 V87 E91 (02/22) *Cert*
2-00 3 365 29610 4.2 1235 3.3 991
3-07 2 308 27520 4.3 1170 3.4 924
4-07 2 365 32227 4.2 1339 3.6 1146
6-00 2 365 26250 4.5 1187 3.4 890
7-05 2 365 34900 4.5 1582 3.4 1185
LIFE 2185 177850 7736 6182
2nd 4-Year-Old, IL State Fair '18



Cozy Nook Pronto Twylight 4E-92
Grandam of Lot 40

R N R PAYOFF BROOKINGS ET *TM

USA 198772 PPR +14

COZY NOOK PRONTO TWYLIGHT

USA 928080 12/02 '4E-92' EEEEE (05/16)
Supr Brood Cow
4-01 2 365 39680 5.0 1569 3.3 1303
8-06 2 365 36080 4.2 1532 3.5 1275
LIFE 3883 335810 14739 11958
Wisconsin Cow of the Year '12
2nd Component Merit, WI State Fair '09
2nd Junior 2-Year-Old, WI State Fair & State Show '06

LOT 41 TRIANGLE ACRES SZZG TANGO

DOB 09/02/2024 Tattoo: K992
Reg. 840 3268894304

Bred 1/26; Due 11/8 to Playmaker

3rd - 7th Dams:

Cozy Nooks Brkgs Terrific ET 3E-91 *Cert*

Cozy Nook Pronto Twylight 4E-92 *Supr Brood Cow*

Cozy Nook Gordon Twyla ET V88 *Cert*

Fox Trail Prophet Tootsie V87

Fox Trail Toots 2E-90 *Elite*

LA RAINBOW SWEET SIZZLING

840 3221039057
Genetic Conditions: PT DT MT WT BH2T BH14T
PPR -19 77%R PTAT +0.8 76%R (04/26)
PTA -250M -28F -4P -44NM\$ 86%R (GEN)
PL +1.5 SCS +2.81 DPR -1.8 SCE +3.3 LIV -0.4

TRIANGLE ACRES DYNMT TRUDY

840 3145618216 Casein: A1A2
07/04 '3E-92' E91 E92 V88 E92 E93 (08/25)
1-11 2 314 18960 4.6 875 3.36 685
3-00 2 300 24230 4.3 1052 3.9 945
3-11 2 313 30070 4.8 1444 3.7 1107
4-11 2 365 31780 4.6 1461 3.7 1179
6-04 2 365 30640 4.2 1290 3.7 1119
LIFE 1825 145890 6625 5473
2nd Junior 2-Year-Old, IL State Show '20

LA RAINBOW BFLY DYNAMITE ETV

840 3129321096 PPR -3

COZY NOOK KNN TRUFFLE

840 3135193060 04/03 'E90' EEEV (07/20)
1-11 2 334 19340 4.8 936 3.7 708
3-01 2 323 24590 4.7 1167 3.9 956
4-02 2 364 26730 4.6 1224 3.7 990
5-03 2 216 23230 4.2 966 3.5 806



Triangle Acres Taylorswift
Sells as Lot 42

LOT 42 TRIANGLE ACRES TAYLORSWIFT

DOB 09/02/2024 Tattoo: K992
Reg. 840 3268894315

Sells Fresh

3rd - 8th Dams:

Cozy Nook Knn Truffle E90

Cozy Nook Brkgs Terrific ET 3E-91 *Cert*

Cozy Nook Pronto Twylight 4E-92 *Supr Brood Cow*

Cozy Nook Gordon Twyla ET V88 *Cert*

Fox Trail Prophet Tootsie V87

Fox Trail Toots 2E-90 *Elite*

LA RAINBOW SWEET SIZZLING

840 3221039057
Genetic Conditions: PT DT MT WT BH2T BH14T
PPR -19 77%R PTAT +0.8 76%R (04/26)
PTA -250M -28F -4P -44NM\$ 86%R (GEN)
PL +1.5 SCS +2.81 DPR -1.8 SCE +3.3 LIV -0.4

TRIANGLE ACRES SLVR TRINKET

840 3227794890
03/05 'V87' V86 E90 +84 V85 V87 (08/25)
2-02 2 350 1680 4.5 759 3.7 627

LA RAINBOW SWEET SILVER ET

840 3129321124 PPR +43

TRIANGLE ACRES DYNMT TRUDY

840 3145618216 07/04 '3E-92' EEVEE (08/25)
4-11 2 365 31780 4.6 1461 3.7 1179
LIFE 1825 145890 6625 5473
2nd Junior 2-Year-Old, IL State Show '20

LOT 43 TRIANGLE ACRES WF ATTITUDE

DOB 09/01/2024 Tattoo: K990
Reg. 840 3268894302

Bred 1/28; Due 11/10 to Tank

3rd - 11th Dams:

Triangle Acres Eeyore Asia Lost at calving

Triangle Acres CD ACDC V88

4-08 2 365 27490 3.7 1028 3.7 1029

2nd Junior 2-Year-Old, IL State Fair '15

Triangle Acres TD Alero 2E-90

7-01 2 306 29100 4.1 1188 3.1 913

LIFE 1960 141220 5578 4781

Triangle Acres Pol Apollo V87

5-01 2 365 28640 4.4 1269 3.3 959

LIFE 1952 135730 6141 4776

Triangle Acres Prop Alana V88

3-08 2 365 30160 4.2 1264 3.4 1031

LIFE 1950 147230 6097 4944

4th Summer Yearling, IL State Fair '98

BROWN HEAVEN WINNINGFORMULA ET

CAN 107362998 Casein: A2A2 AB

Genetic Conditions: PT DT MT WT BH2T BH14T

PPR -93 93%R PTAT +0.3 96%R (04/26)

PTA -873M -31F -32P -509NM\$ 97%R (MACE)

PL -1.7 SCS +3.15 DPR -0.5 SCE +4.4 LIV -1.4

TRIANGLE ACRES VNGNC ALASKA

840 3225427745

Genetic Conditions: PT DT MT WT BH2T BH14T

02/05 '+83' +83 +83 +81 +84 +84 (04/23)

Triangle Acres En Aloha V87

Triangle Acres Alexis ET V88

5-10 2 365 25160 4.2 1049 3.8 959

Triangle Acres Amanda 2E-90

8-04 2 365 31350 4.0 1261 3.7 1174

LIFE 2158 150400 6005 5679

Triangle Acres Princess Ann V86



Triangle Acres Hmptn Arctic

Grandam of Lot

DOUBLE T CARTER VENGEANCE

840 3013248393 PPR +27

TRIANGLE ACRES HMPMN ARCTIC

USA 68194556 03/06 'V86' VV+VV (02/22) *Cert*

2-02 2 308 20230 3.9 785 3.6 733

3-02 2 305 21090 4.1 858 3.7 784

LOT 44 K AND K FAMOUS FORTUNE

DOB 04/15/2023 Tattoo: K949
Reg. 840 3268894348

02/09 'V85' +83 V86 V86 +83 V85 (02/26)

2-01 2 331 22941 3.3 753 3.1 706 Inc

Last test: 85 lbs., 54 SCC

Bred 10/3; Due 7/11 to Playmaker

4th - 7th Dams:

Brook Run Jetway Fern E93

4-05 2 305 19650 4.3 842 3.7 724

2X All-American '00 & '01

Res. All-American 4-Year-Old '03

Res. Grand Champion, Eastern Nat'l '03

Campswiss Jacque Fawn 2E92

4-11 2 365 29850 4.9 1461 3.7 1103

Nom. All-American 5-Year-Old '00

CIE Campswiss Supreme Faith 4E94

7-10 2 365 35710 4.6 1624 3.5 1244

All-American Aged Cow '10

Grand Champion, Central National '00

IE Bowers Johnny Mazella 3E-92

9-08 2 305 2400 4.4 1051 3.4 813

Res. Grand Champion, Royal Winter Fair '89

BROWN HEAVEN R FAMOUS ET

CAN 109109715 Casein: A2A2 BB

Genetic Conditions: PT DT MT WT BH2T BH14T

PPR -38 94%R PTAT +0.3 97%R (04/26)

PTA +338M -13F -6P -297NM\$ 98%R (MACE)

PL -1.3 SCS +3.16 DPR -1.6 SCE +4.2 LIV -0.5

EDGE VIEW SW FENIX

USA 68211672

04/03 'V89' E90 E91 E90 V88 V88 (04/25)

2-04 2 365 21830 4.1 907 3.4 748

Nom. All-American Senior 3-Year-Old '24

1st 4-Year-Old, Midwest Spring Show '25

1st & Intermediate Champion, Southwest Nat'l '24

3rd Senior 2-Year-Old, Southwest Nat'l '23



Edge View SW Fenix V89

Dam of Lot 44

3rd Dam:

Round Hill Legacy Flyhi ET 3E-93

6-05 2 365 29760 4.4 1304 3.4 1021

Nom. All-American Component Merit Cow '12

Res. All-American Produce of Dam Member '09

Nom. All-American 4-Year-Old '09

CUTTING EDGE SECRET WEAPON

USA 68193312 PPR -65

CUTTING EDGE T FRASCATI ETV

USA 68190280 04/04 '1E-90' EEEVE (01/22)

2-04 2 331 22250 3.7 832 3.6 809

Junior Champion, WI State Fair '18 & '19

Junior Champion, WI State Show '18

LOT 45 TRIANGLE ACRES JY GEORGIA

DOB 11/07/2023 Tattoo: K970
Reg. 840 3268894279

Bull bred 8/23; Due in June to Triangle Acres Szlng Peril (Sizzling x Sonic Perfect x Tequila Perhaps x Vigor Pert)

6th - 11th Dams:

Triangle Acres Justine E90
5-08 2 365 26470 3.8 1012 3.2 842
LIFE 1555 100660 4299 3504
Triangle Acres Em Jessica V88
4-07 2 343 21480 4.9 1042 3.6 781
Triangle Acres Status Jenna V87
Triangle Acres Jenny V86
5-07 2 365 25020 4.2 1041 3.8 955
LIFE 2206 126780 5294 4857
Triangle Acres Primrose Ms Joy V87
Triangle Acres Primrose S 2E90

PINE-TREE JONMAR JOEY ETV

840 3231545339 Casein: A2A2 AB
Genetic Conditions: PT DT MT WT BH2T BH14T
PPR +122 72%R PTAT -0.1 75%R (04/26)
PTA +785M +51F +40P +435NM\$ 80%R (GEN)
PL +2.2 SCS +2.90 DPR -0.3 SCE +4.0 LIV +0.5

TRIANGLE ACRES CDNC GLAMOUR

USA 68198824
Genetic Conditions: PT DT MT WT BH2T BH14T
05/03 '+83' V86 V87 +82 G78 +84 (07/24)
2-03 2 311 18646 4.1 767 3.5 658
3-03 2 365 29900 4.0 1197 3.5 1049
4-07 2 365 27470 3.9 1070 3.6 994

3rd - 5th Dams:

Triangle Acres Trmp Josette V87
2-03 2 365 20570 4.6 947 3.8 783
Triangle Acres Payt Joslin V87
6-09 2 365 32590 4.4 1440 3.9 1209
LIFE 2374 185290 8232 6802
Triangle Acres Pay Josie V88
5-05 2 365 28530 3.8 1083 3.3 943

SHILOH BROOKNGS CADENCE ET *TM

USA 71130650 PPR +38

TRIANGLE ACRES GLITTER TWIN

USA 68152679 05/03 'V87' VEV+V (08/18) *Cert*
2-04 3 365 28730 4.0 1162 3.5 1017
3-06 2 301 25350 3.9 987 3.5 899
4-06 2 333 25160 3.9 981 3.4 844

LOT 46 TRIANGLE ACRES DESIGN JADE

DOB 07/31/2023 Tattoo: K954
Reg. 840 3268894283

02/06 'V86' +84 V86 V87 V86 V87 (02/26)

2-02 2 212 14753 3.8 563 3.2 468 Inc

Last test: 62 lbs., 13 SCC
Fresh 10/5; Bred 5/17 to Iroc

From the same family:

Triangle Acres Drk Jupiter '2E-E94'

Grand Champion, Midwest Quality Colors '21

1st Aged Cow, Midwest Spring Show '21

Res. Grand Champion, Delco Classic '20

1st 5-Year-Old, IL State Show '20

1st Junior 3-Year-Old & Res. Land of Lincoln Grand

Champion, IL State Fair '18

Dam of Triangle Acres Carter Juke @ NGG

HF DESIGN ET

840 3218804016 Casein: A2A2 AB
Genetic Conditions: PT DT MT WT BH2T BH14T
PPR +12 87%R PTAT +0.6 93%R (04/26)
PTA +41M -1F +8P -120NM\$ 95%R (MACE)
PL -1.9 SCS +3.16 DPR -1.5 SCE +3.8 LIV -0.4

TRIANGLE ACRES PRSP JASMINE

840 3205318038
04/07 'V86' V88 E90 V85 V85 +84 (07/24)
2-07 2 307 19610 3.9 769 3.3 650
3-08 2 365 25210 4.1 1041 3.3 833

Mat Sister: **Triangle Acres Prsu Juniper '+81'**

3-02 3 365 25700 4.3 1097 3.5 911

Dam of Triangle Acres Drk Jupiter '2E-E'94'



Triangle Acres Drk Jupiter

From the Same Family as Lot 46

TRIANGLE ACRES FACT PROSPER*TM

840 3135193068 PPR +74

TRIANGLE ACRES PRPL JANUARY

USA 68127193 08/04 'E90' EEEVE (06/19)
3-01 2 365 21850 5.1 1114 4.0 869
4-05 2 309 22020 4.9 1076 3.9 851
5-05 3 319 27510 5.0 1366 3.9 1065
6-05 2 318 21150 4.9 1027 3.9 823
LIFE 2612 162100 7999 6263

3rd - 8th Dams:

Triangle Acres Pioneer July V87
4-05 2 365 28730 4.9 1410 3.5 1015
Triangle Acres Chris Jan +84
3-00 2 296 17180 5.0 866 3.8 655
Triangle Acres Pas Janie V86
7-09 2 302 24710 4.2 1031 3.5 864
LIFE 1947 131990 5447 4659

Triangle Acres Em January +84

5-09 2 341 24870 4.6 1154 3.7 927
LIFE 1685 101780 4822 4016

Triangle Acres Jo Julie 4E-90 *Cert*

7-04 2 365 26630 4.1 1099 3.7 983
LIFE 3220 197870 8408 7134

Triangle Acres Lori Jo V86

LOT 47 TRIANGLE ACRES SW JINXED

DOB 03/22/2024 Tattoo: K982
Reg. 840 3268894311

Bull bred 11/8; Due in September to Triangle Acres Szlng Peril (Sizzling x Sonic Perfect x Tequila Perhaps x Vigor Pert)

3rd - 9th Dams:

Triangle Acres Pro Junebug +84

4-08 2 305 23040 4.1 951 3.4 773

Triangle Acres Wndrmnt Juno V87

3-07 2 312 24680 4.4 1094 3.6 884

Triangle Acres Polo June V85 VG-MS

3-07 2 365 28230 4.3 1208 3.6 1016

Triangle Acres Cam Julie 2E-91 EX-MS

4-02 2 365 30650 4.5 1380 3.4 1035

LIFE 1911 130280 6058 4675

CUTTING EDGE SECRET WEAPON

USA 68193312 Casein: A2A2 BB
Genetic Conditions: PT DT MT WT BH2T BH14T
PPR -65 887%R PTAT +0.4 92%R (04/26)
PTA -1148M -35F -22P -418NM\$ 94%R (MACE)
PL -0.7 SCS +2.88 DPR -1.6 SCE +2.3 LIV -0.1

TRIANGLE ACRES ALN JAMBOREE

840 3227794892

Lost at calving

Triangle Acres Em Julia

8-04 2 335 24370 4.7 1150 3.7 910

LIFE 2401 150150 7220 5910

Triangle Acres Jo Julie

4E-90 *Cert*
Triangle Acres Lori Jo V86



Triangle Acres Br Jitterbug E90

Grandam of Lot 47

R HART ATLANTAS ALL-IN ETV *TM

840 3132541841 PPR +24

TRIANGLE ACRES BR JITTERBUG

840 3139214215 03/09 'E90' EEVEV (07/20)

1-10 2 365 21990 3.8 838 3.4 750

3-01 2 337 24400 3.7 914 3.3 803

4-02 2 365 30230 5.30 1521 3.3 1007

3rd 4-Year-Old, Midwest Quality Colors '21

Res. Land of Lincoln Grand Champ, IL State Show '20

LOT 48 CIE TWINKLE-HILL KADIN 1352

DOB 11/07/2018 Tattoo: T500
Reg. 840 3201335088

06/09 'V86' +84 E90 V86 +84 V87 (08/25)

2-00 2 365 29520 4.2 1232 3.5 1032

3-02 2 341 27740 4.0 1108 3.5 972

4-03 2 365 28670 4.0 1137 3.4 976

5-07 2 365 29830 3.9 1156 3.3 999

7-02 2 88 9379 3.3 310 3.0 277 Inc

LIFE 1725 131160 5321 4568

Last test: 95 lbs., 123 SCC

Fresh 2/6; Bred 4/28 to Ignite

TRIANGLE ACRES FACT PROSPER*TM

840 3135193068 Casein: A2A2 BB
Genetic Conditions: *TM PT DT WT BH2T BH14T
PPR +74 81%R PTAT -0.7 82%R (04/26)
PTA +668M +18F +20P +351NM\$ 88%R (GEN)
PL +4.3 SCS +2.65 DPR +1.6 SCE +3.3 LIV +2.8

IE TWINKLE-HILL B KADY 1128

840 3129317200

05/10 'V87' V87 V88 V86 V85 V87 (10/21)

1-10 2 314 20240 4.0 805 3.5 703

2-10 2 365 26610 4.2 1126 3.6 969

4-04 2 365 39520 3.8 1521 3.3 1313

5-08 2 304 33670 3.6 1220 3.2 1089

6-07 2 310 23040 3.8 873 3.8 870

LIFE 1825 153500 5988 5351

3rd Dam:

RF Twinkle-Hill Opie Kandy

V87

5-01 2 356 34734 4.5 1559 3.3 1135

LIFE 2376 211754 9571 7201

LIME ROCK SEASIDEBLOOM

USA 68144448 PPR +67

IDR TWINKLE-HILL WHISK KALI

USA 72973210 05/04 'V85' VVV++ (06/19)

1-10 2 365 27510 4.2 1147 3.2 889

3-02 2 365 32690 4.1 1334 3.4 1109

4-08 2 365 35170 4.0 1395 3.4 1189

LIFE 1349 111050 4547 3775

LOT 49 TRIANGLE ACRES KS KALAMITY

DOB 03/02/2023 Tattoo: K943
Reg. 840 3268894342

02/11 '+83' +80 V85 V85 +8 +84 (2/26)

2-05 2 272 16124 4.0 645 3.5 558 Inc

Last test: 54 lbs., 13 SCC

Bred 11/5; Due 8/16 to DarkHorse

TRIANGLE ACRES FACT PROSPER*TM

840 3135193068 Casein: A2A2 BB
Genetic Conditions: *TM PT DT WT BH2T BH14T
PPR +74 81%R PTAT -0.7 82%R (04/26)
PTA +668M +18F +20P +351NM\$ 88%R (GEN)
PL +4.3 SCS +2.65 DPR +1.6 SCE +3.3 LIV +2.8

CIE TWINKLE-HILL KADIN 1352

840 3201335088

06/09 'V86' +84 E90 V86 +84 V87 (08/25)

2-00 2 365 29520 4.2 1232 3.5 1032

LIFE 1725 131160 5321 4568

3rd - 4th Dams:

IDR Twinkle-Hill Whisk Kali

V85

RF Twinkle-Hill Opie Kandy

TRIANGLE ACRES FACT PROSPER*TM

840 3135193068 PPR +74

IE TWINKLE-HILL B KADY 1128

840 3129317200 05/10 'V87' VVVV (10/21)

4-04 2 365 39520 3.8 1521 3.3 1313

LIFE 1825 153500 5988 5351

LOT 50 PULL TAB FOREMOST PRETTY

DOB 07/27/2022 Tattoo: PT46
Reg. 840 3224973683

03/01 'V86' V85 V86 V86 V85 V86 (08/25)

2-01 2 365 20010 4.3 869 3.8 751

Last test: 62 lbs., 38 SCC
Fresh 4/6/26

3rd - 9th Dams:

Sun-Made GB Plt Pretzel ET 3E-93

2-03 2 365 32770 4.4 1453 3.5 1135
LIFE 2248 158350 7367 5734

2nd Senior 3-Year-Old, IN State Show & State Fair '11

Sun-Made Garbro Eg Patsy ET E93

5-02 2 365 52360 5.0 2592 3.4 1794

National Protein Award '09

Sun-Made Garbro G Petal ET E92

Top Acres Present ET 5E-94 *Cert* Supr Brood Cow*

4-00 2 365 40190 4.9 1966 3.5 1405
LIFE 2081 182740 8366 6426

CUTTING EDGE T FOREMOST

USA 68171744 Casein: A1A2 BB
Genetic Conditions: PT DT MT WT BH2T BH14T
PPR -72 90%R PTAT +0.6 95%R (04/26)
PTA -490M -29F -22P -259NM\$ 96%R (GEN)
PL +0.2 SCS +3.02 DPR -1.1 SCE +3.2 LIV -0.7

PULL TAB CADENCE PIPER ET

840 3227794892



Blessing Garbro A Phebe

Maternal Sister to Dam of Lot 50
HM Senior Champion, Midwest Quality '23

SHILOH BROOKNGS CADENCE ET *TM

USA 71130650 PPR +38

BLESSING GARBRO R PAYTON ET

USA 68181293 02/04 'V87' VVVVV (01/19) *Cert*
2-03 2 112 8950 4.8 427 3.2 287

Arnola Peggy Priscilla 5E-91 *Cert* Supr Brood Cow*

2X National Total Performance Winner

Arnola Pauline Peggy 4E-90 *Cert* Supr Brood Cow*

N C Mtn Alaric Pauline 2E-90 *Elite* Supr Brood Cow*

LOT 51 TRIANGLE ACRES FAMOUS PLAZA

DOB 03/09/2021 Tattoo: K884
Reg. USA 68212737

04/11 'V87' E91 V88 V86 +84 V86 (02/26)

3-11 2 305 29550 4.0 1175 3.3 981

Last test: 68 lbs., 141 SCC
Bred 1/6; Due 10/19 to Sweet Sox

Junior Champion, Stephenson County Fair '21

3rd - 8th Dams:

Sun-Made Gbkb DltN Pepsi ET 2E-92 *Cert*

7-02 2 365 31630 4.0 1277 3.5 1115
LIFE 2202 166410 7236 6021

Res. Grand Champion, IL State Fair '12

Sun-Made Gar Bro Pepsi ET 2E-91 *Cert*

4-06 2 365 33540 4.0 1347 3.3 1123

Top Acres Present ET 5E-94 *Cert* Supr Brood Cow*

Arnola Peggy Priscilla 5E-91 *Cert* Supr Brood Cow*

2X National Total Performance Winner

Arnola Pauline Peggy 4E-90 *Cert* Supr Brood Cow*

N C Mtn Alaric Pauline 2E-90 *Elite* Supr Brood Cow*

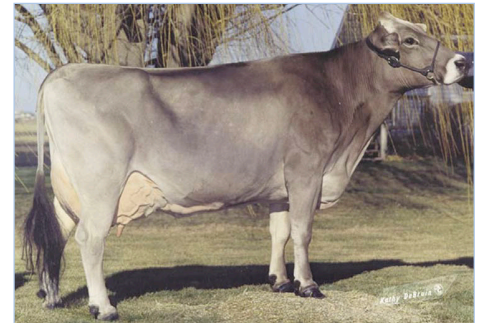
BROWN HEAVEN R FAMOUS ET

CAN 109109715 Casein: A2A2 BB
Genetic Conditions: PT DT MT WT BH2T BH14T
PPR -38 94%R PTAT +0.3 97%R (04/26)
PTA +338M -13F -6P -297NM\$ 98%R (MACE)
PL -1.3 SCS +3.16 DPR -1.6 SCE +4.2 LIV -0.5

TRIANGLE ACRES NSD PALAZZO

840 3145618183

Genetic Conditions: PC DT MT WT BH2T BH14T
03/07 'V85' V85 V85 V87 G78 V87 (07/21)
2-01 2 355 19110 4.9 928 3.6 680
3-03 2 313 25750 4.6 1185 3.6 936
4-02 2 365 28820 4.2 1219 3.8 1082



Top Acres Present ET 5E-94

5th Dam of Lot 51

KALINGEN NESTA NESCARDO

120072590536 PPR -40

TRIANGLE ACRES BRKGS PIZZAZ

USA 68141880 06/11 'E91' EEEEE (06/19) *Cert*
2-02 2 30 19660 4.4 862 3.6 698
3-02 3 346 27790 4.5 1243 3.6 992
4-03 3 365 24200 4.1 989 3.9 941
5-05 2 365 31130 4.7 1473 3.5 1094
6-10 2 305 25560 3.9 995 3.3 838
LIFE 1926 145260 6360 5177

LOT 52 TRIANGLE ACRES PRTG PALMELO

DOB 09/02/2023 Tattoo: K961
Reg. 840 3268894290

02/05 'V86' +84 V86 V85 V85 V87 (02/26)

2-01 2 197 12643 3.8 476 3.3 423 Inc

Last test: 68 lbs., 23 SCC
Fresh 10/16; Bred 4/24 to Iroc

4th Fall Yearling, Midwest Spring Show '25
1st Fall Calf, IL State Fair '24

3rd - 9th Dams:

Random Luck PT LG Papaya-ET 2E-91

2-05 2 365 24880 4.3 1058 3.3 824

Member Res. All-American Produce of Dam '17

Nom. All-American Senior 3-Year-Old '15

Random Luck KB Phoebe 2E-E93 *Cert*

5-08 2 365 34210 4.5 1541 3.1 1048

Nom. All-American Aged Cow '10

Res. Grand Champion, WI State Fair '10

Grand Champion, WI State Fair '08

Res. Grand Champion WI State Show & Fair '06

HM All-American Senior 3-Year-Old '06

TRIANGLE ACRES PERCENTAGE

840 3225427771

Genetic Conditions: PT DT MT WT BH2T BH14T

PPR +46 63%R PTAT +0.2 70%R (04/26)

PTA +99M +3F +6P +244NM\$ 67%R (GEN)

PL +3.0 SCS +2.61 DPR +0.2 LIV +1.3

PULL TAB WHISKEY PINACOLADA

840 3125778697

05/03 'V85' V85 V88 +84 V86 +84 (07/24)

2-04 2 365 25910 4.1 1070 3.4 890

4-05 2 365 26630 4.4 1177 3.5 943

Ms Elm Park Papoose ET E91

4-08 2 305 24680 4.5 1110 3.1 771

Kies Haven Vogue Pammy E91

4-08 3 365 38740 5.0 1920 3.6 1411

HM All-American Junior 2-Year-Old '94

Kies Haven Jade Polly V87

5-11 2 305 19160 4.3 817 3.4 652

Kies Haven BVJ Peony V88

CIE Kies Haven Era Penny 4E-E90



Triangle Acres Prtg Palmelo

Sells as Lot 52

MANIS GLENN WHISKEY ET *TM

USA 68133750 PPR -38

ROSEY D PT TAN PEACHES ET

840 3125778684 03/04 '+83' +++++ (01/20)

2-06 2 305 21160 5.0 1070 3.3 703

LOT 53 TRIANGLE ACRES WF KNOCKOUT

DOB 08/17/2019 Tattoo: K824
Reg. 840 3205318024

04/10 '1E-90' E90 E91 E90 E90 E90 (07/24)

2-00 2 365 23590 4.7 1113 3.7 878

3-03 2 365 28880 4.8 1399 3.6 1047

4-07 2 365 27770 4.8 1342 3.6 1013

Last test: 62 lbs., 107 SCC
Fresh 3/15/24; Bred 4/29 to Ignite/Angus

1st 4-Year-Old & Reserve Grand Champion, Quality
Colors Spring Show '23

3rd - 5th Dams:

Triangle Acres JV Kasey 2E-E91

4-10 2 365 29780 4.4 1316 3.6 1082

LIFE 2108 150390 6768 5372

Little Cobb Jade Kashley 4E-E90

10-1 2 365 28240 4.3 1219 3.6 1009

LIFE 3421 200870 9011 7554

Little Cobb Mar Katie E90

9-09 2 365 21730 4.9 1064 3.8 822

LIFE 3526 175260 8440 5498

BROWN HEAVEN WINNINGFORMULA ET

CAN 107362998 Casein: A2A2 AB

Genetic Conditions: PT DT MT WT BH2T BH14T

PPR -93 93%R PTAT +0.3 96%R (04/26)

PTA -873M -31F -32P -509NM\$ 97%R (MACE)

PL -1.7 SCS +3.15 DPR -0.5 SCE +4.4 LIV -1.4

TRIANGLE ACRES CDNC KOKO

USA 68155999

Genetic Conditions: PC DT MT WT BH2T BH14T

07/06 '2E-E91' E91 E92 E92 E90 E92 (07/21)

1-11 3 365 25460 4.2 1058 3.6 911

3-04 2 365 26170 3.9 1027 3.7 980

4-08 2 300 22160 4.4 971 3.7 814

5-08 2 309 24920 4.1 1029 3.6 904

6-08 2 365 32750 4.2 1373 3.4 1116

LIFE 2077 156930 6539 5673



Triangle Acres WF Knockout 1E-90

Sells as Lot 53

SHILOH BROOKNGS CADENCE ET *TM

USA 71130650 PPR +38

TRIANGLE ACRES WARR KANDY

USA 960214 05/08 '2E-E91' EVEEE (08/13)

2-03 2 326 19070 4.8 910 3.7 703

3-04 2 333 25200 4.4 1113 3.6 917

4-04 2 365 27480 4.4 1202 3.8 1033

5-11 2 352 27670 4.2 1161 3.4 939

7-00 2 365 26830 4.7 1266 3.7 980

LIFE 2149 153870 6949 5694

LOT 54 NIERMANS DD NIGHTCAP

DOB 12/26/2022 Tattoo: 2202
Reg. USA 68226232

02/08 '+84' +84 V85 +83 +84 +84 (08/25)

2-05 2 318 19856 4.0 790 3.6 722 Inc

Last test: 54 lbs., 22 SCC
Bred 4/24 to Angus

6th - 8th Dams:

Niermans Telstars Novel +82

7-04 2 365 30900 3.6 1106 3.7 1129
LIFE 3250 207990 8241 7941

Niermans Stretch Nate V88 *Elite*

8-04 2 365 3095 3.6 1113 3.4 1062
LIFE 2619 193510 6993 5176

Elmers Nanetta V85 *Cert*

5-10 2 328 25380 3.0 752

HILLTOP ACRES DB DIPNDOT ETV

840 3215414525

Genetic Conditions: PT DT MT WT BH2T BH14T

PPR +47 67%R PTAT +0.6 73%R (04/26)

PTA +189M +10F +16P +177NM\$ 72%R (GEN)

PL +1.0 SCS +3.05 DPR -0.7 LIV -0.1

NIERMANS BOSEPHUS NEPTUNE

USA 68199378

04/02 'V88' V87 E91 V86 V86 V88 (02/23)

2-04 2 365 15590 5.5 862 3.8 598

4-00 2 365 16490 5.1 848 3.1 519

5-08 2 365 11540 5.4 627 4.0 464

3rd - 5th Dams:

Niermans Nuclear Noel V86

3-04 2 365 22990 5.2 1189 4.1 950

LIFE 3429 163610 7357 6063

Niermans Jetways Natalee G79

2-04 2 23710 4.0 954 3.5 840

Member Nom. All-American Junior Best Three '99

2nd Fall Yearling, Southeast Nat'l '99

Niermans Matthews Nanna V85

4-00 2 328 18990 3.5 660 3.6 676

JOBOWONDER BOSEPHUS ET *TM

USA 68129318 PPR +2

NIERMANS GOLDMINE NEWBY

USA 68100466 12/10 '4E-E91' EEEEEV (10/20)

6-11 2 365 38670 4.6 1765 3.5 1340

5-06 2 365 31410 4.7 1462 3.6 1146

LIFE 3603 23612 11381 8569

LOT 55 JUST SO THUNDER STORM

DOB 06/10/2022 Tattoo: 183
Reg. USA 68222085

03/02 'V87' V87 V88 V86 V85 V87 (08/25) *Cert*

2-02 2 365 26390 4.3 1137 3.6 943

Last test: 58 lbs., 141 SCC
Bred 11/2; Due 8/13 to Prince

3rd - 9th Dams:

Top Acres Pilot Sunglow ET 2E-93

6-07 2 365 29870 4.3 1280 3.4 1024

Hill-N-Dale Ensign Sue ET 3E-93 *Cert*

4-04 2 365 36360 3.78 1348 3.5 1255

2X All-American '98 & '99

2X Res. All-American '97 & '00

Reserve Grand Champion, Central Nat'l '98

Hill-N-Dale Jade Sarah 2E-92

7-11 2 365 25980 4.0 1050 3.6 942

Res. Grand Champion, OH State Fair '93

HARTS THUNDER *TM

USA 68113037 Casein: AB

Genetic Conditions: *TM PT DT WT BH2T BH14T

PPR +41 97%R PTAT +0.2 98%R (04/26)

PTA +368M +2F +11P +155NM\$ 99%R (MACE)

PL +1.3 SCS +3.21 DPR -0.3 SCE +2.4 LIV +1.8

JUST SO C SUNBURN ETV

USA 68197971

03/09 '+84' E91 V86 V85 +83 +82 (09/22)

2-03 2 328 21380 3.6 775 3.4 723

3-05 2 288 24070 3.2 774 3.1 752



Cutting Edge L Suntan E93

Grandam of Lot 55

VOELKERS TD CARTER *TM

USA 68119645 PPR -4

CUTTING EDGE L SUNTAN

USA 68132613 04/11 'E93' EEEEE (04/16)

2-03 2 292 18564 3.8 712 3.3 609

3-03 2 354 25470 3.6 913 3.4 869

4-06 2 305 25390 4.1 1051 3.1 797

6-00 2 305 26320 4.1 1066 3.1 810

7-05 2 305 22840 3.7 848 3.2 732

LIFE 1846 130454 5008 4226

LOT 56 SUN-MADE DYNAMITE TWIST ET

DOB 03/07/2020 Tattoo: SG800
Reg. 840 3125778699

05/05 'V86' V88 V85 V85 V85 V86 (08/25)

4-03 305d ME 29,493M 1426F 1088P

Sells Fresh

3rd - 6th Dams:

Timberline Jetway Toni (M) 3E-E94 *Cert*

8-11 2 365 29156 5.3 1622 3.5 1008
LIFE 2201 142620 6471 5235

All-American Aged Cow '01

All-American 4-Year-Old '99

All-American Senior 3-Year-Old '98

All-American Senior 2-Year-Old '97

Res. Grand Champion, Central Nat'l Show '99

Fulp Telstar Titan T C E-90 *Cert*

7-06 2 351 24920 3.9 977 3.9 968

Fulp Jesta Telstar Taneil 3E-E90

5-06 2 365 23860 3.8 907 3.8 904

JK Symbolic Lajesta Tina 4E-E90

LA RAINBOW BFLY DYNAMITE ETV

840 3129321096 Casein: A2A2 VB
Genetic Conditions: *TM PT DT WT BH2T BH14T
PPR -3 98%R PTAT +0.3 99%R (04/26)
PTA -755M -18F -8P -11NM\$ 99%R (MACE)
PL +2.3 SCS +2.70 DPR -1.1 SCE +2.8 LIV +1.8

GROVES-SUN WNDRMNT TWIGGY

USA 68131212
Genetic Conditions: PT DT MT WT BH2C BH14T
07/06 'E92' E92 E92 V89 E93 E91 (11/18)
2-03 2 365 26380 4.5 1189 3.5 922
3-05 2 365 30100 4.4 1339 3.4 1014
7-02 2 305 27190 4.7 1268 3.4 912

Mat Sister: Groves-View Nuke Tabby V89-CAN
Una. All-American Senior 2-Year-Old '23

Mat Sister: Groves-View Agenda Tina 4E-95
Total Performance Winner, Southwest Nat'l '18



Groves-Sun Wndrmnt Twiggy E92

Dam of Lot 56

TOP ACRES C WONDERMENT ET *TM

USA 196880 PPR -45

MILK & HONEY TONIS TESSA

USA 956795 06/08 '2E-E92' EEEEE (06/13)
2-05 2 365 21400 4.4 941 3.3 698
4-07 2 365 22500 4.4 992 3.1 697
Reserve All-American 4-Year-Old '11
Junior Champion, Ozark Empire Fair '07

LOT 57 TRIANGLE ACRES PTRN TALULAH

DOB 11/11/2023 Tattoo: K971
Reg. 840 3268894321

02/03 'V85' +84 V85 V85 V85 V86 (02/26)

2-00 2 149 9065 3.6 330 3.1 285 Inc

Last test: 54 lbs., 264 SCC
Fresh 12/7; Bred 4/28 to Ignite

3rd - 8th Dams:

Groves-Sun Wndrmnt Twiggy E92

3-05 2 365 30100 4.4 1339 3.4 1014

Milk & Honey Tonis Tessa 2E-E92

4-07 2 365 22500 4.4 992 3.1 697

Reserve All-American 4-Year-Old '11

Timberline Jetway Toni (M) 3E-E94 *Cert*

8-11 2 365 29156 5.3 1622 3.5 1008
LIFE 2201 142620 6471 5235

All-American Aged Cow '01

All-American 4-Year-Old '99

All-American Senior 3-Year-Old '98

All-American Senior 2-Year-Old '97

Res. Grand Champion, Central Nat'l Show '99

RIANGLE ACRES LTG PATTERNS

840 3225427774
Genetic Conditions: PT DT MT WT BH2T BH14T
PPR +9 62%R PTAT +0.5 69%R (04/26)
PTA +593M +6F +11P -65NM\$ 66%R (GEN)
PL -1.5 SCS +2.99 DPR -3.4 LIV -1.3

TRIANGLE ACRES TREK TULIP

840 3227794906
02/10 'V86' V86 V87 V85 V85 V87 (07/24)
2-02 2 317 20230 3.8 777 3.5 704

Fulp Telstar Titan T C E-90 *Cert*

7-06 2 351 24920 3.9 977 3.9 968

Fulp Jesta Telstar Taneil 3E-E90

5-06 2 365 23860 3.8 907 3.8 904

JK Symbolic Lajesta Tina 4E-E90



Milk & Honey Tonis Tessa 2E-92

4th Dam of Lot 57

COZY NOOK CARL TREK

840 3145184063 PPR -10

SUN-MADE TRI ANBL TILLY ET

840 3145618209 02/05 'V85' VEFVW (07/20)
2-03 2 365 21180 4.2 882 3.4 723
3-06 2 210 16270 4.1 665 3.6 578

LOT 58 SUNNYISLE PKR TUESDAY ET

DOB 03/28/2023 Tattoo: K947
Reg. 840 3268894346

02/10 'V86' V85 V87 V85 +84 V86 (02/26)

1-11 305dME 20,017M 811F 621P

Last test: 41 lbs., 123 SCC
Fresh 3/13/25; Bred 4/11 to Iroc

Nom. All-American Spring Yearling '24
4th Spring Yearling, WDE '24

3rd - 7th Dams:

Sunnyisle Colby Twilite ET 2E-E93 *Cert*

3-06 2 365 34990 4.3 1505 3.3 1172

LIFE 1333 107110 4696 3580

3X All-American | Grand Champion, Central Nat'l '06

Mort Simon Tanya 4E-94 *Cert* Supr Brood Cow*

7-00 2 365 38030 4.1 1562 3.4 1276

LIFE 2329 203520 8511 6977

Grand Champion, WI State Fair '97 & '99

Member All-American Produce of Dam '97

BROTHERS THREE PARKER ET *TM

USA 196657 Casein: A2A2

Genetic Conditions: *TM PT DT WT BH2T BH14T

PPR -99 97%R PTAT +0.0 98%R (04/26)

PTA -235M -35F -34P -365NM\$ 99%R (MACE)

PL -0.4 SCS +3.08 DPR -0.8 SCE +4.1 LIV -0.2

SUNNYISLE PS TORI ET

USA 68112012

06/07 'E93' E93 E95 E94 E94 E92 (11/15)

3-10 2 313 19230 4.1 780 3.2 614

Mort Matt Tammy 3E-90 *Cert* Supr Brood Cow*

LIFE 1676 105650 4879 3827

Nom. All-American 5-Year-Old '90

Mort Improver Lori 3E-E90

8-05 2 365 26020 5.0 1297 3.6 929

Betty Debbie V88

3-10 2 350 18300 4.5 815



Sunnyisle Pkr Tuesday ET

Sells as Lot 58

TOP ACRES POWER SURGE *TM

USA 196004 PPR -32

SUNNYISLE LEGACY THYME ET

USA 951142 02/06 'V89' VEVV (03/09)

2-04 2 365 21400 4.6 994 3.5 755

Nom. All-American Senior 3-Year-Old '10

All-American Fall Yearling '08

Intermediate Champion, Northwest Nat'l '10

LOT 59 TRIANGLE ACRES JOEY THREAD

DOB 10/15/2023 Tattoo: K967
Reg. 840 3125778699

2-04 2 65 3548 4.0 141 3.5 125 Inc

Fresh 3/1/26
Last test: 58lbs., 15 SCC
Bred 5/21 to Ignite

PINE-TREE JONMAR JOEY ETV

840 3231545339 Casein: A2A2 AB

Genetic Conditions: PT DT MT WT BH2T BH14T

PPR +122 72%R PTAT -0.1 75%R (04/26)

PTA +785M +51F +40P +435NM\$ 80%R (GEN)

PL +2.2 SCS +2.90 DPR -0.3 SCE +4.0 LIV +0.5

PULL TAB BRAIDEN THEA ET

840 3125778688

07/04 '3E-E91' E90 E92 E92 E90 E90 (07/24)

2-06 2 313 18020 4.1 746 3.4 615

3-06 2 365 26695 4.4 1178 3.5 923

5-00 2 365 26410 3.9 1030 3.3 873

6-07 2 365 23670 4.7 1112 3.4 804

LIFE 1754 112600 4839 3863

LOT 60 PULLTAB CARTER TUNDRA

DOB 06/16/2021 Tattoo: PT45
Reg. 840 3224973674

04/07 'V86' V87 V87 V86 +84 V85 (02/26)

2-11 2 365 23250 4.1 944 3.6 826

4-09 2 48 2580 5.3 137 2.9 76 Inc

Last test: 78 lbs., 528 SCC
Fresh 3/18

VOELKERS TD CARTER *TM

USA 68119645 Casein: A1A2 AB

Genetic Conditions: *TM PT DT WT BH2T BH14T

PPR -4 98%R PTAT +0.6 99%R (04/26)

PTA +703M +15F +7P -66NM\$ 99%R (MACE)

PL -1.2 SCS +3.11 DPR -3.5 SCE +3.7 LIV -2.1

PULL TAB FST TRINKET ET

840 3125778696

02/10 'V85' V88 V87 V86 +83 V85 (10/21)

5-02 2 365 25590 4.8 1226 3.6 919

3rd - 7th Dams:

Sun-Made Jetway Therese ET E90 EX-MS

3-09 2 365 33920 4.3 1464 3.5 1171

1st Senior 2-Year-Old, WI State Show & State Fair '02

Sun-Made Jade Treasure ET V88

3-09 2 365 28220 3.9 1090 3.5 982

Mort Matt Tammy 3E-90 *Cert* Supr Brood Cow*

Mort Improver Lori 3E-E90

Betty Debbie V88

BLESSING TEX BRAIDEN ET *TM

USA 198435 PPR -111

PULL TAB LEGACY TAFFY ET

USA 68114377 04/00 'E90' EEVVE (09/13)

2-05 2 330 23070 4.6 1051 3.4 773

3-06 2 365 31590 4.6 1458 3.3 1032

5-04 2 304 18350 4.3 798 2.8 516

3rd - 7th Dams:

Sun-Made Jetway Therese ET E90 EX-MS

Sun-Made Jade Treasure ET V88

Mort Matt Tammy 3E-90 *Cert* Supr Brood Cow*

Mort Improver Lori 3E-E90

Betty Debbie V88

RIEDLAND CAMELOT FAUST ET *TM

USA 199157 PPR -52

PULL TAB LEGACY TAFFY ET

USA 68114377 04/00 'E90' EEVVE (09/13)

2-05 2 330 23070 4.6 1051 3.4 773

3-06 2 365 31590 4.6 1458 3.3 1032

LOT 61 REBANN WNRT TRINITY

DOB 06/20/2023 Tattoo: K950
Reg. 840 3268894350

02/02 'V85' +83 V86 +84 V85 V86 (08/25)

2Y 2 206 13572 4.4 600 3.1 427

Last test: 58 lbs., 13 SCC
Bred 2/9; Due 11/22 to Sweet Sox/Angus

3rd - 9th Dams:

Nor-Bert Sun-HP B Taylor-ET V87

3-02 3 305 24370 4.3 1054 3.5 864

2nd Summer Yearling, WI State Fair '04

Sun-Made KB Prunki Tora ET E90 EX-MS

7-04 2 361 33950 5.0 1685 3.6 1217

Tanya Jet Toni ET 2E-E91

4-06 2 345 24380 4.4 1067 3.6 871

1st Senior 3-Year-Old, WI State Fair & State Show '02

Mort Simon Tanya 4E-94 *Cert* Supr Brood Cow*

Mort Matt Tammy 3E-90 *Cert* Supr Brood Cow*

Mort Improver Lori 3E-E90

Betty Debbie V88

TOP ACRES CADE WINRITE ETV

USA 68201687 Casein: A2A2 BB

Genetic Conditions: PT DT MT WT BH2T BH14T

PPR +2 85%R PTAT +0.4 89%R (04/26)

PTA +182M +1F +4P +31NM\$ 91%R (GEN)

PL +0.3 SCS +2.86 DPR -0.7 SCE +3.7 LIV -0.5

REBANN WINNING FORM TIANA

840 3133525311

04/00 'V87' V87 V86 V85 V86 V88 (10/21)

4-06 2 305 35210 4.0 1410 3.2 1136



Sun-Made KB Prunki Tora ET E90

4th Dam of Lot 61

BROWN HEAVEN WINNINGFORMULA ET

CAN 107362998 PPR -93

REBANN RICHARD TEAGAN

840 3133525299

LOT 62 TRI-NSPIRED HMGWY DELLA RAE

DOB 9/03/2024
Reg. 840 3268894306

Bred 11/8; Due 8/20 to Sexed Showtime

3rd - 12th Dams:

Miss Embezzel Daphnee Rae EX-91 EX-MS

4-11 2 293 29580 3.5 1022 2.9 846

Scientific Gold Dana Rae-ET EX-95 2E

4-04 2 345 29270 4.1 1606 2.9 1154

LIFE 1302 136420 3.6 4975 3.0 4082

Reserve All-American 5-Year-Old '12

Grand Champion, Midwest Fall Nat'l '12

Scientific Debutante Rae-ET EX-92

All-American 4-Year-Old '05

Reserve Grand Champion, WDE '05

Scientific Jubilant Rae-ET EX-90 DOM

Hanoverhill Tony Rae EX-96 3E GMD DOM 5*

HM All-American Junior 2-Year-Old '88

PROGENESIS HEMINGWAY-ET

CAN 12789661

TC TY TV TL TD GTPI +2696

PTA +742M +13F +9P +194NM 98%R (04/26)

PTA +1.4PL 2.72SCS +1.1 DPR

PTA +0.78T +0.45UDC -1.26FLC 95%R (04/26)

MISS TRIANGLE-GW DARBY RAE

USA 145229481

GP-83 EVEF+ 4-11

1-11 2 305 23960 4.1 988 3.2 778

3-08 2 305 27780 4.6 1287 3.4 938

C Hanoverhill TT Roxette-ET 2E-94 GMD DOM

Mil-R-Mor Roxette EX-90 GMD DOM 30*

C Glenridge Citation Roxy EX-97 4E GMD 6*

C Norton Court Model Vee EX-90 6*

Norton Court Reflection Val VG-CAN 5*



Scientific Gold Dana Rae-ET EX-95 2E

4th Dam of Lot 62

BRENLAND DENVER

CAN 12074893 GTPI +2112

INDIES-VIEW-GW DAP RAE-ET

USA 71852836 EX-90 EEEFE 7-03

2-00 2 314 20440 4.3 882 2.9 598

3-00 2 305 21170 5.2 1108 3.2 667

4-03 2 305 23810 4.0 946 3.0 718

5-10 2 359 25380 4.2 1086 3.0 778

7-00 2 305 31270 3.7 1150 3.2 986

LIFE 1755 129630 4.2 5436 3.1 4027

LOT 63 INDIES-VIEW JORDY GENIE *RC

DOB 12/15/2019

Reg. 840 3227794923 *RC

VG-86 VVVVV 5-11

6-03 2 46 3174 3.9 125 3.5 111 Inc

Last test: 74 lbs.; 44 SCC

Fresh 12/6/24; Bred 5/9 to Thunderstorm

3rd - 7th Dams:

Lexis Goldwyn Georgie-ET EX-91-3E-CAN 5*

3-08 2 365 34621 4.6 1585 3.1 1076

LIFE 5 lac 167984 4.3 7202 3.2 5351

Penlow Geo Integrity X EX-95-2E-CAN 9*

6-01 2 365 44160 4.5 1989 3.1 1367

LIFE 4 lac 170148 4.8 8099 3.3 5641

Grand Champion, Atlantic Champ Show '07 & '10

Grand Champion, Atlantic Spring Show '10

Res. All-Atlantic 4-Year-Old '07

Res. Grand Champion, Atlantic Summer Show '07

Penlow Georgette Outside EX-96-2E 11*

All-Canadian Mature Cow '07

All-Canadian Senior 3-Year-Old '04

Res. All-Canadian '03, '05 & '06

Grand Champion, Ontario Discovery '05

Int. Ch. & HM Grand Champion, Royal Winter Fair '04

CYCLE MCGUCCI JORDY-RED

840 3131666411

CV TE TC TY LT LD GTPI +1757

PTA -1213M -50F -56P -888NM 99%R (04/26)

PTA -4.1PL 3.11SCS -3.5DPR

PTA +2.27T +1.35UDC +2.78FLC 99%R (04/26)

SCO-LO-COONS GLORY SNCHZ-ET

USA 71852909 EX-90 VEEVE 8-06

1-11 2 309 15540 3.9 604 3.1 483

2-11 2 301 16870 4.2 712 3.1 527

3-11 2 328 17890 4.3 765 3.1 562

4-11 2 305 20930 3.7 784 3.0 624

LIFE 2084 128480 3.9 4966 3.0 3871

Penlow Georgie Dragoon

EX-3E-CAN 8*
5-04 2 365 26149 3.4 899 3.3 860

LIFE 7 lac 167265 3.9 6444 3.4 5699

Res. Grand Champion Lanark '02

Penlow Ada Clyde

VG-87-4Y-CAN
4-06 2 365 24833 3.3 827 3.2 789



Lexis Sid Glory-ET EX-91

Grandam of Lot 63

GEN-MARK STMATIC SANCHEZ

USA 134422312 GTPI +1678

LEXIS SID GLORY-ET

CAN 10951906 EX-91 EEEVE 5-01

2-00 2 305 20814 4.1 849 3.0 630

4-03 2 353 28101 4.3 1203 2.8 795

3rd Senior 2-Year-Old, Southern Spring Nat'l '14

2nd Milking Yearling, Mid-East Fall Nat'l '13

LOT 64 GOGO (CROSSBRED)

DOB 9/2023

Reg. 840 3268894288

1-10 2 286 23490 3.8 889 3.3 768 Inc

Last test: 78 lbs., 54 SCC

Fresh 7/23; Bred 4/21 to Iroch

TRIANGLE ACRES PERCENTAGE

840 3225427771

PPR +46 63%R PTAT +0.2 70%R (04/26)

PTA +99M +3F +6P +244NMS 67%R (GEN)

PL +3.0 SCS +2.61 DPR +0.2 LIV +1.3

INDIES-VIEW JORDY GENIE *RC

840 3227794923 *RC VG-86 VVVVV 5-11

6-03 2 46 3174 3.9 125 3.5 111 Inc

3rd - 8th Dams:

Lexis Sid Glory-ET E91 EX-MS

Lexis Goldwyn Georgie-ET EX-91-3E-CAN 5*

Penlow Geo Integrity X EX-95-2E-CAN 9*

Penlow Georgette Outside EX-96-2E 11*

Penlow Georgie Dragoon EX-3E-CAN 8*

Penlow Ada Clyde VG-87-4Y-CAN

CYCLE MCGUCCI JORDY-RED

840 3131666411 GTPI +1757

SCO-LO-COONS GLORY SNCHZ-ET

USA 71852909 EX-90 VEEVE 8-06

LIFE 2084 128480 3.9 4966 3.0 3871

LOT 65 INDIES-VIEW LICORICE-ET *RC *PO

DOB 9/26/2021
Reg. USA 145299958

VG-87 VE++V 4-02

Last test: 52 lbs., 1213 SCC
Fresh 6/2; Bred 2/22; Due 12/5 to Hancock

5th - 7th Dams:

Indies-View Led Leggie GP-82

6-00 2 365 28390 3.6 1018 2.9 814
LIFE 1866 130950 3.7 4806 2.9 3743

Indies-View Tab Luxury VG-88

LIFE 2247 169810 3.4 5795 2.8 4732

Indies-View Mandingo Lois VG-87

LIFE 1596 102500 4.0 4095 3.1 3142

STONEDEN DETOUR-RED-ET

CAN 8360695

TV TL GTPI +1749

PTA -1097M -50F -46P -700NM 96%R (04/26)

PTA -3.1PL 3.39SCS +1.2DPR

PTA -0.29T -0.87UDC -0.47FLC 93%R (04/26)

INDIES-VIEW LOLLIPOP-P *RC *PO

USA 66890189 *RC *PO EX-90 EEVVE 5-10

2-04 2 365 24940 4.1 1023 3.1 769

4-04 2 365 28020 3.9 1105 3.0 845

3rd - 4th Dams:

Indies-View GW&GD Legend EX-93 4E DOM

4-04 2 365 36110 4.3 1535 3.1 1133

LIFE 3462 273810 4.2 11570 3.1 8616

Indies-View-GW&GD Rhm Lego VG-87

4-08 2 365 28270 3.8 1084 3.1 870

AGGRAVATION LAWN BOY-P-RED

USA 133080890 GTPI +1868

INDIES-VIEW GW&GD LEGENDARY *RC

USA 135319923 EX-91 VEVVE 6-01

2-09 2 365 26930 4.9 1316 3.1 824

4-04 2 305 21500 3.9 828 3.0 646

5-07 2 365 33530 5.0 1668 2.8 945

6-10 2 365 27040 4.4 1187 3.0 805

LIFE 1752 125000 4.6 5810 3.0 3811

LOT 66 TRI-NSPIRED LATENITE LAVA *RC *PO

DOB 9/03/2023
Reg. 840 3268894272 *RC *PO

2-02 2 155 8927 4.0 357 3.3 296 Inc

Fresh 12/1; Bred 4/24 to Dropbox

Reserve All-Illinois Fall Yearling '25
3rd Fall Calf, Northern IL District Show '24

5th - 6th Dams:

Indies-View GW&GD Legendary *RC EX-91 2E

5-07 2 365 33530 5.0 1668 2.8 945

LIFE 1752 125000 4.6 5810 3.0 3811

Indies-View GW&GD Legend EX-93 4E DOM

4-04 2 365 36110 4.3 1535 3.1 1133

LIFE 3462 273810 4.2 11570 3.1 8616

Indies-View-GW&GD Rhm Lego VG-87

4-08 2 365 28270 3.8 1084 3.1 870

AVANT-GARDE-I LATENITE-RED-ET

CAN 13507027

PC TY TV TL TD GTPI +1972

PTA +103M -36F -29P -657NM 98%R (04/26)

PTA -4.8PL 3.25SCS -2.5 DPR

PTA +1.77T +0.98UDC +0.56FLC 98%R (04/26)

INDIES-VIEW LICORICE-ET *RC *PO

USA 145299958 *RC *PO

VG-87 VE++V 4-02

Indies-View Led Leggie GP-82

6-00 2 365 28390 3.6 1018 2.9 814

LIFE 1866 130950 3.7 4806 2.9 3743

Indies-View Tab Luxury VG-88

LIFE 2247 169810 3.4 5795 2.8 4732

Indies-View Mandingo Lois VG-87

LIFE 1596 102500 4.0 4095 3.1 3142



Tri-Nspired Latenite Lava *RC *PO

Sell as Lot 66

STONEDEN DETOUR-RED-ET

CAN 8360695 GTPI +1749

INDIES-VIEW LOLLIPOP-P *RC *PO

USA 66890189 *RC *PO EX-90 EEVVE 5-10

2-04 2 365 24940 4.1 1023 3.1 769

4-04 2 365 28020 3.9 1105 3.0 845

