

**2023**  
***STARS AND STRIPES***  
***NATIONAL LINEBACK SALE***



**FRIDAY, MAY 26TH, 2023**  
**7:00 PM**  
**BEAVER SPRINGS FAIRGROUNDS**  
**BEAVER SPRINGS, PA**

# Welcome to the Stars & Stripes Weekend

*We would like to take a moment and send a THANK YOU to everyone who as contributed to making this weekend's events happen!! A HUGE thank you to the Beaver Springs Fairgrounds for allowing us to use their wonderful facility. Also, Thank You to all who donated their time, services and supplies. Without these donations we would not have been able to pull this weekend off!!! And lastly, Thank You to all the exhibitors, consignors and buyers!! You are the reasons WE do this. Again, THANK YOU and GOOD LUCK with your Linebacks!!!!*  
~The Sale Committee

## Weekend Schedule

May 26th

7:00 PM -National Lineback Sale

May 27th

9:00 AM Breeders Meeting  
(bring your semen tanks)

10:00 AM Membership Meeting

11:00 AM Eastern Regional Show



# Stars & Stripes Weekend Sponsors & Donations

**Agri-Basics (Robert Daivs) - calf feed**

**Ayrback Farm (Stowe Family)**

**Country Farms IBA - halters**

**Kinn-E Farms & Hauling (Brad & Jill Kinney)**

**Pocopson Meadow Farm - Decorations**

**Seven Oaks Farm (Snook Family) - Hay & numbers**

**Mark Hershey Farms - Beet Pulp**

# 2023 Stars & Stripes National Lineback Sale

Friday, May 26, 2023 • 7:00 PM • Beaver Springs, PA

Sale at the Beaver Springs Fairgrounds

**GPS Address: 785 Snyder Ave, Beaver Springs, PA 17812**

## Sale Contacts

Jesse Stowe..... 240-304-5735

Joe Stowe..... 443-907-3613

Jill Kinney..... 610-587-9877

Andrew Snook... 570-765-4787

Deidra Krantz.... 717-342-4882



*View/bid online in Real Time  
at [www.cowbuyer.com](http://www.cowbuyer.com)*

\*Bidders must pre-register & be pre-approved.

\*Contact Aaron Tompkins if you need  
assistance at 336-363-4639

**\*Trucking note: Kinn-E Farms Hauling  
will be at the sale with a pot for anything  
needing a ride back west. Brad 815-703-8030**

Sale Managed By:



Auctioneer:



1515 Kepner Hill Rd, Muncy, PA 17756  
(570) 546-6907 fax: (570) 546-9344  
PA Auct. License # RY71L



**Scarlet-Summer KB Fannie**  
(She sells as Lot 1 & Dam of Lot 2)

## LOT 1

### Scarlet-Summer KB Fannie

LD172502947

Born 10/11/19

\*Dark Speckled Witrick

W-C

2-02 365 26550 4.3 1152 3.6 966

**Fresh 3/3/23 @ 3-05**

1st 2 tests 122 & 144 lbs 4.4%F 3.7%P

*\*Will show as a Sr 3yr-old!*

*Jarrold & Marsha Burleigh*

Muncy, PA

570-772-3542

**Morningview McC Kingboy**

HO72044077

**Scarlet-Summer Gala May**

LD172502946

\*Dark Speckled Witrick (W-C)

8-03 365 28275 4.2 1194 3.3 950

**De-Su Bkm McCutchen**

HO69990138

**Morningview Super Megan**

HO68654508 EX-91

**Scarlet Summer D Galahead**

HO68575828

\*Son of Gwendelyn EX-95

**Scarlet-Summer Burleigh**

\*Dark Speckled Witrick (W-C)

## LOT 2

### Scarlet-Summer Nash Fury

172502948

Born 3/3/23

\*Dark Speckled Witrick

W-C

**Sire: Scarlet-Summer KX Nashville**

145342039

Flathills Awe Kix-RED X

Jon-Lu Reality Nancy

**Dam: KB Fannie (Sells as Lot 1)**





## Seven-Oaks-PA Calliope-RED

(She sells as Lot 3)

### LOT 3

#### Seven-Oaks-PA Calliope-RED

LD172502698

Born 9/5/21

\*Dark Speckled Witrick

W-C

Pasture bred 4/10/23, Due November  
to Goldcream Dutch Blueberry

#### Calliope's winnings:

\*2nd Fall calf (Youth) 3rd place open at  
the 2022 Eastern National Lineback show

\*1st place Fall Calf at Mason Dixon fair

\*Res. Jr Champion at Mason Dixon fair

\*Res. Grand Champ at Mason Dixon fair

\*1st place Fall Calf at Kimberton fair

\*Junior champion at Kimberton fair

\*Res. Grand champion at Kimberton fair

\*2nd place (Open) Fall Calf at Goshen fair  
and 1st place (Youth)

\*2nd place (Open) Fall Calf at Solanco  
fair 1st place (youth)

\*1st place Fall Calf Unionville fair

\*Res. Jr champion (Youth) Unionville fair

\*2nd place youth R&W at PA farm show

Ava Kirk

Peach Bottom, PA

#### Hoo-Vale Luk Kreamscile-RED

HO3148060331

#### Seven-Oaks-PA Clover OCP

LD172502696

\*LD Breeding Stock (O-C-P)

#### Zimmerview Lucky PP-RED-ET

HO74228150

#### Hoo-Vale Apjack Koffeecake

HO144698558 VG-87

#### Marbarbil L Limp Lunatic-RED

HO3132703477

#### See-Gree HD Candy Cane

LD9098

\*Dark Speckled Witrick (W-B)

#### 3rd Dam:

#### Pickin-Run Joe Jean-RED

LD8065



### Ayrback Night Lights-P-RED

*\*1st Fall Calf @ East Regional Lineback Show 2020  
(Same family as Lot 4)*



### Ayrback Night Limelight-P-RED

(Same family as Lot 4)

## LOT 4

### Ayrback Pip Lilibet

\*Reg. pending

Born 12/1/23

\*Dark Sided Witrick  
W-C

Ayr-Back Farm  
Oxford, PA

Ayrback Oliver Pip-P  
JE3242986049

Ayrback Eli Lover-RC  
LD172502527

\*White Classic Witrick (W-A)  
1-09 155 8404 4.9 413 3.6 301 RIP

Dutch Hollow Oliver-P  
JE67184544

Ayr-Back Genova Pepi  
JE119260238 EX-92%  
5-04 365 21670 5.1 1109 3.6 779

Kag's Fullback Eli-P-RC  
LD172502229

Ayr-Back Legend Leona-RED  
LD172502150 VG-89 (87 87 90 88 90)  
\*Dark Speckled Witrick (W-A)  
2-00 287 15662 4.5 702 3.4 528  
3-00 365 22190 4.8 1062 3.3 742  
4-02 365 25997 4.0 1051 3.4 877

3rd Dam: Ayr-Back Pro Lucky-RED  
\*White Classic Witrick (W-A)  
4-07 295 21207 3.9 836 3.2 676  
4th Dam: Lucy GP-83  
5th Dam: Lionel EX-91 (94 91 90 93 90)

#### Same family as:

Ayrback Night Lights-P-RED

*\*1st Fall Calf East Regional Show 2020  
(Pictured above)*

Ayrback Night Limelight-P-RED  
(Pictured above)



**Myline Legend Hocus Pocus**  
*\*Jr Champion National Lineback Show 2020*  
(Dam of Lot 5)

---

## LOT 5

**Myline Masons Hopscotch**

LD3236009924

Born 7/13/22

\*Gloucester

G-C

*Austin Kopfer*

Durand, IL

**Udderconfusion Mick Mason**  
BS68207173

**Myline Legend Hocus Pocus**  
LD3216836533  
\*Gloucester (G-C)  
-records over 25,000M 4.0%F 3.4%P  
*\*Jr Champion National Show 2020*

**Double W Mick**  
BS68161990

**Udderconfusion Motown Maple**  
BS951101 EX-91,2E

**Ayr-Back Ross Legend-RED**  
LD9316  
\*Gloucester

**Myline Tanner Harry-OCP**  
LD23ALR0462  
\*LD-Breeding stock (O-C-P)



## LOT 6

### Harnish FB Mooch-RC

\*reg. pending

Born 10/21/22

\*Dark Sided Witrick

W-B

*Tyson Harnish*

Lancaster, PA

#### GR-Acres HRTLN Fireball-P-RED

LD172502400

#### Ayr-Back Justice Mortica

LD172502196 VG-88 VVEVV

\*Dark Sided Witrick (W-C)

2-01 280 17515 3.6 628 3.1 535

3-00 294 23314 3.3 776 3.1 716

4-00 -averaging in the 90s!

#### Burket-Falls Hartline-RED-P

LD3139410016

\*Dark Sided Witrick (W-C)

#### GR-Acres Halfback Frosty

LD17202061

\*Dark Sided Witrick (W-C)

#### Spruce-Haven Spirit-RED-ET

LD7797

#### Ary-Back Ziggy Mimi

HO142303548

\*Dark Speckled Witrick (W-C)

2-00 305 24766 3.5 865 2.9 726

#### 3rd Dam: Dunwood Jeeves Marty VG-86

Lifetime 204771 3.3 6748 2.9 6008

#### 4th Dam: Mabel VG-87

Lifetime 166430 3.6 5963 2.9 4343

## LOT 7

### Goldcream Dairy Rose

LD172502411 VG-88

Born 4/7/20

\*White Classic Witrick

W-B

1-11 289 12028 4.0 487 2.9 347

Fresh 3/16/23 w/ 2nd calf

-milking 71 lbs/day

Bred 4/22/23 to 525HO51 Durango

*Jonas Zeiset*

Lewisburg, PA

#### J-Nep Shotline Devin

LD9544

\*Dark Sided Witrick (W-B)

#### J&E Zeiset Mary Rose

LD172501661 EX-92, EX-MS

\*Dark Sided Witrick (W-C)

5-00 305 20654 3.8 777 2.7 565

#### Rosybrook Shotline

LD8003

\*Dark Sided Witrick (W-C)

#### J-Nep Noah Diane 441

LD9543

\*Dark Sided Witrick (W-C)

#### Myline Allstar Marco

LD6687

\*White Classic Witrick (W-B)

#### J&E Zeiset Kez Misty Rose

HO140972423 EX-90

Lifetime 116000 4.2 4828 2.9 3410

#### Maternal sister:

Durch Rose EX

-dam of Dutch Invader & Dutch Blueberry

#### 3rd Dam:

J&E Zeiset Karen Rosabel

VG-85

Lifetime 200,000+ milk



## LOT 8

### Wyli Legacy Dixie

LD3143945813

Born 9/3/21

\*Dark Sided Witrick

W-B

**-Pregnant and due early September  
to Pocopson-Meadow Legend Shamu**  
reg. # LD3142092894

*Wyatt Lehner*

Mohrsville, PA

### Meadowcrk Mac Legacy-P-RED

LD3009851633

\*Dark Sided Witrick (W-C)

### SGF Hot Sauce Denna

LD172501828

\*Gloucester (W-C)

### CA-Mdwerk Larry Mac-RED

HO3009851627

### Popcopson-Meadow Just Ladybird

LD3009851626

\*Dark Speckled Witrick (W-B)

### Myline BH Hot Sauce

LD172501506

\*White Classic Witrick (W-B)

### SGF David 306-OCF

LD13ALR0293

## LOT 9

### Wyli Legacy Sugar Cookie

LD3143945814

Born 8/13/21

\*Dark Sided Witrick

W-B

**-Pregnant and due December  
to Pocopson-Meadow Legend Shamu**  
reg. # LD3142092894

*Libby Lehner*

Mohrsville, PA

### Meadowcrk Mac Legacy-P-RED

LD3009851633

\*Dark Sided Witrick (W-C)

### Ayr-Back Reggie Sleighbell-RC

LD172502208

\*Dark Speckled Witrick (W-C)

### CA-Mdwerk Larry Mac-RED

HO3009851627

### Popcopson-Meadow Just Ladybird

LD3009851626

\*Dark Speckled Witrick (W-B)

### Myline BH Hot Sauce

LD172501506

\*White Classic Witrick (W-B)

### Ayr-Back Ross Snowwhite-RED

LD172501538

\*White Classic Witrick (W-A)

1-10 288 16233 3.6 588 2.9 478

2-09 291 18460 3.6 670 3.0 547

3-09 298 19962 4.1 819 3.0 593

### 3rd Dam:

### Pocopson-Meadow Surprise 328-R

LD6674

7-00 265 22981 3.7 847 2.9 675

8-00 335 24510 3.4 835 2.8 689

## LOT 10

### Pretty Stitches Mor Smooches

LD3239834049 Tag ID #8049

Born 6/28/21

\*Speckled Witrick

W-C

Due sale time to

**Pretty Stitches Cosmo General-RED**

LD3203816129 **EX-90**

(Cosmo X PS Spark Gile-RED EX-92)

*Daryl & the late Ruby Bollinger*

Elizabethtown, PA

**Pretty Stitches Chev Morris**

LD

*\*Sired multiple show winners in '21 & '22*

**Darr-Lynn George Sweetg**

HO3149930279

**Ricecrest Chevalier**

HO143600116 **GP-83**

**Scarlet-Summer Gala Mercedes**

LD69807306 **GP-83**

\*Dark Speckled Witrick

3-00 305 24698 3.5 860 3.0 731

**RSW Ambush George**

HO3132524254

**Darr-Lynn Pedro Sweetness**

HO3134098078

## LOT 11

### Pretty Stitches Gen Pistol

LD3239834066 Tag ID ##8066

Born 3/1/23

\*Dark Sided Witrick

W-C

*Deidra Bollinger Krantz*

Quarryville, PA

**Pretty-Stitches Cosmo General**

LD3203816129 **EX-90**

\*Dark Speckled Witrick (W-B)

**Grade Holstein**

-sold for dairy as nice fresh 2yr-old

**Myline Fred Cosmo**

LD6292

\*Classic Witrick (W-B)

**PS Spark Glee-RED-OCP**

LD31340981123 **EX-92**

3-11 23673 3.8 900 2.8 657

**Riverdown Unstopabull-RED**

HOCAN11801450 4/23 PTA +2.19T

**Darr-Lynn Lundy Peaches**

HO3134098099

**3rd Dam:**

**Plushanski Gold Chip Pietje VG-87**

## LOT 12

### Pocopson-Meadow Legend Cupcake

LD3274021274

Born 8/10/22

\*Dark Speckled Witrick  
W-A

*Barnard Bailly*  
West Chester, PA

#### Ayr-Back Ross Legend-RED

LD9315

\*Gloucester (G-B)

#### Pocopson-Meadow Lustfull Peggy

LD3142092871

\*Dark Speckled Witrick (W-B)  
-From a grazing herd  
-milking 75 lbs 3.8%F 3.0%P

#### Plenty-Good Lonestar Ross-RED

LD70346

\*Classic Witrick (W-B)

#### Ayr-Back Shane's Linda-RC

LD6928

\*Classic Witrick (W-C)

#### Ayr-Back Who's Lustful

LD172501421

\*White Classic Witrick (W-A)

#### Three-Rivers Spirit Paris-RC

LD9207

\*Dark Sided Witrick (W-C)

#### 3rd Dam:

**Three-Rivers Ping Pong-RED-OCP**

LD19960

## LOT 13

### Pocopson-Meadow FT Roulette-RED

LD3274021275

Born 4/25/23

\*Dark Speckled Witrick  
W-A

*Barnard Bailly*  
West Chester, PA

#### GR-Acres Freight Train-P

LD3216548903

\*Dark Speckled Witrick (W-B)

#### Pocopson-Meadow Hill Radar-RED

LD236857732

\*White Classic Witrick (W-A)  
-From a grazing herd  
-milking 75 lbs 7.6%F 2.4%P

#### GR-Acres Hrtln Fireball-P-RED

LD172502400

\*White Classic Witrick

#### Ivy-Rose Catilina

LD172502187

\*White Classic Witrick (W-C)

#### Myline BH Hot Sauce

LD172501506

\*White Classic Witrick (W-B)

#### Pocopson-Meadow Blue Rocket

LD3144295920

\*Dark Sided Witrick (W-A)

#### 3rd Dam:

**Pocopson-Meadow Apollo Ryder**

LD9469

## LOT 14

### Lyn-She Finn Letti

LD172502934

Born 5/27/22

\*Dark Sided Witrick

W-C

*Kalli Schwenk*

Annville, PA

#### Lyn-She Lyric Finn-RED

HO172502933

#### Lyn-She Spirit Libbi-RED

LD172501202

\*White Classic Witrick (W-B)

1-10 330 12580 4.2 525 3.2 402

4-02 264 10860 4.1 450 3.1 339

5-01 292 12010 4.2 500 3.2 388

#### King-Lane Poip Lyric-RED

HO3140239126

#### lyn-She Ladd Fidget-RED

HO3130784703

#### Spruce-Haven Spirit-RED-ET

LD7797

#### Ayr-Back Russ Lola

LD8382 VG-87

\*Dark Speckled Witrick (W-C)

## LOT 15

### Pocopson-Meadow Nerve Slurpie

LD3274021273

Born 11/1/22

\*Dark Speckled Witrick

W-B

*Barnard Bailly*

West Chester, PA

#### Ayr-Back Lazer Nerve

LD172502352

\*Dark Sided Witrick (W-C)

#### Pocopson-Meadow SL Slurge

LD3208540773 G-79

\*Dark Speckled Witrick (W-B)

-From a grazing herd

-milking 70 lbs 7.9%F 3.3%P

#### Rustik Lightning Lazer

BS68169200

#### Ayr-Back Jackson Nadyia

LD172501541

\*White Classic Witrick (W-A)

#### Myline BH Hot Sauce

LD172501506

\*White Classic Witrick (W-B)

#### Pocopson-Meadow Snow

LD172501773

\*White Classic Witrick (W-B)

**3rd Dam:**

**Dew 7751**

LD7221



## LOT 16

### Quietness Sprite Dory

LD3258073764

Born 4/16/22

\*Gloucester

G-C

*Chris Dixon*  
White Hall, MD

#### Plenty-Good Flash Sprite-RED

LD3137838317

\*Gloucester (W-A)

#### Quietness Liner Destiny

HO144831940

#### Cedar-RED LR1880 Flashlite-RED

LD58376325

\*Gloucester (G-B)

#### Plenty-Good Loverboy Sparkles

LD7507

\*Dark Speckled Witrick (W-B)

#### Ayr-Back Who's Lustful

LD172501421

\*White Classic Witrick (W-A)

#### Quietness Butler Dior

HO143556613

#### 3rd Dam:

##### Quietness Avery Decatur

HO142565148

## LOT 17

### Ayrback Casanova Lydia-RC

\*Reg. pending

Born 9/1/23

\*Classic Witrick

W-B

*Ayr-Back Farm*  
Oxford, PA

#### Ayrback Eli Casanova-P-RED

LD172502484

\*Dark Speckled Witrick (W-A)

#### Ayr-back Lionel Lauren

LD172502210 **VG-88, EX-MS**

\*Dark Sided Witrick (W-C)

1-10 365 17965 3.8 687 3.1 564

3-05 291 19093 4.2 759 3.2 620

4-05 246 16400 3.8 616 3.2 519 RIP

#### Kag's Fullback Eli-P-RC

LD172502229

\*White Classic Witrick (W-B)

#### Ayr-Back Marco Cupcake-RC

LD9059 **EX-90**

3-11 305 19997 3.7 743 2.7 542

#### Ayr-Back Improved Lionel-RC

LD172501433

\*Dark Sided Witrick (W-B)

#### Ry-Jan After Lulu

HO144757370

1-09 294 14619 3.0 436 3.1 451

2-08 230 15770 2.3 358 2.9 459

#### 3rd Dam: Jook Lion King 2074

##### GP-82

3-00 305 23881 2.7 643 3.4 802

4-02 305 25462 3.2 826 3.2 823

5-08 305 23043 3.8 868 3.3 771

7-03 305 27429 3.4 940 2.9 808

Lifetime 161489 2.5 4044 3.1 4940

## LOT 18

### Redview Shasha

LD3239139436

Born 8/5/22

\*Dark Sided Witrick

W-C

## LOT 19

### Redview Hava

LD3239139422

Born 8/5/21

\*Dark Sided Witrick

W-C

Due 12/27/23 to

**Dalmar Theodore-RED**

reg. #3144373765

*Samuel Doak*

Middleburg, PA

**SA-Dawn City Rome-ET**

HO3151981003

**Redview Line Millie**

LD3129020232

\*Dark Sided Witrick

**Holyland Simplicity-P-RC-ET**

HO3136246981

**Trentway-JS Raindrop-RED-ET**

HO3142352029 EX-90 (12th gen. EX)

3-01 305 26414 4.2 1251 3.1 833

**Plenty-Good Ross Mystic-RED**

LD8061

\*White Classic Witrick

**Redview Maxine**

LD8403

\*White Classic Witrick

**3rd Dam:**

**Stolfus Milky White-RC**

LD7673

*Lots 16 & 17 are FULL sisters*

## LOT 20

### Goldcream FB Big-RED

\*Reg. pending

Born 3/1/23

\*Dark Sided Witrick

W-A

*Jonas Zeiset*

Lewisburg, PA

**GR-Acres HRTLN Fireball-P-RED**

LD172502400

**Goldcream Ian Blaktica-Ocp**

LD172502368 VG-88

\*LD Breeding Stock (W-C)

2-01 305 15197 3.7 559 2.9 4474

**Burket-Falls Hartline-RED-P**

LD3139410016

\*Dark Sided Witrick (W-C)

**GR-Acres Halfback Frosty**

LD17202061

\*Dark Sided Witrick (W-C)

**Grachock Ian**

LDNLD616098363

\*Dark Sided Witrick (W-C)

**J&E Zeiset Halftica**

LD 1723501665 EX-91, 91-MS

Lifetime 112157 milk

**3rd Dam:**

**J&E Zeiset Shaztica**

EX-90

## LOT 21

### TWB'S Reba Moonshine-P-RED

LD3205599173

Born 9/10/22

\*Gloucester

G-A

*Tim & Sue Bealmear*

Fawn Grove, PA

#### Plenty-Good Flash Sprite-RED

LD3137838317

\*Gloucester (W-A)

#### TWB's Angels Reba-RED

LD172502456

Gloucester (G-A)

#### Cedar-RED LR1880 Flashlite-RED

LD58376325

\*Gloucester (G-B)

#### Plenty-Good Loverboy Sparkles

LD7507

\*Dark Speckled Witrick (W-B)

#### Pocopson-Meadow Jackson Bo

LD172501972

\*Dark Sided Witrick (W-A)

#### TWB's Angel

LD7715

\*Gloucester (G-B)

#### 3rd Dam:

**TWB's Glo Gal**

LD6468

## LOT 22

### TWB's Georgina's Martha

LD3209599170

Born 6/11/22

\*Dark Speckled Witrick

W-A

*Tim & Sue Bealmear*

Fawn Grove, PA

#### TWB's Red Propagator

LD172501694

\*Dark Sided Witrick (W-A)

#### TWB's Georgina

LD8907

\*Classic Witrick (W-C)

#### TWB's Propagator

LD172501474

\*Gloucester (G-A)

#### TWB's Valentine

LD9271

\*Dark Sided Witrick (W-A)

#### TWB's Rocky P Baldy

LD8433

\*Classic Witrick (W-B)

#### Stoltzfus Zipper

LD6181

\*Dark Sided Witrick (W-A)

#### 3rd Dam:

**Stoltzfus Wilma**

LD4217

## LOT 23

### Celestial -Dream Morris Dewey

LD3212245642 Tag ID #761

Born 11/1/19

\*Dark Speckled Witrick

W-C

1st lactation 305d 18,000M

**Fresh 5/4/23 w/ 2nd calf**

-last test- 72 lbs 4.6^F 3.0%P

**Bred 5/4/23 to**

**Pretty-Stitches Abe Trigger-P**

LD3293834042

(Abe-P X VG-85 Innovator w/ 90 lbs X  
Lyon Legal Tillie EX-94)

*Travis & Denise Hartranft*

Covington, PA

**Pretty Stitches Chev Morris**

LD3134098116 VG-87

*\*Sired multiple show winners in '21 & '22*

**Celestial-Dream Fusion Decimal**

JE3143332400

**Ricecrest Chevalier**

HO143600116 GP-83

**Scarlet-Summer Gala Mercedes**

LD69807306 GP-83

\*Dark Speckled Witrick

3-00 305 24698 3.5 860 3.0 731

**Parkmont Kyro Fusion-ET**

JE60287038

**Eastmon Armani Digit (2)**

JE3124630488

## LOT 24

### Celestial -Dream Mor Annamae

LD3212245642 Tag ID #795

Born 1/26/21

\*Dark Speckled Witrick

W-C

**Fresh 2/28/23**

-last test- 61 lbs 3.7%F 3.0%P

**Bred 5/4/23 to**

**Pretty-Stitches Ar Sylvester-RED**

LD3239834043

(Artie-RED X EX-90 Rage that was ALCR  
E. Reg. Lineback Show Grand Champ)

*Travis & Denise Hartranft*

Covington, PA

**Pretty Stitches Chev Morris**

LD3134098116

*\*Sired multiple show winners in '21 & '22*

**Celestial-Dream Anacond-RED**

HO3149930263

**Ricecrest Chevalier**

HO143600116 GP-83

**Scarlet-Summer Gala Mercedes**

LD69807306 GP-83

\*Dark Speckled Witrick

3-00 305 24698 3.5 860 3.0 731

**Heatherstone Mustafa-RED**

HO3130325404

**Celestial-Dream Star Adell**

HO65302525

**3rd Dam:**

**Darr-Lynn Jethro Annie  
VG-86**



## LOT 25

### Pretty-Stitches Mav Fizzo

LD3239834061 Tag ID #8061

Born 9/1/22

\*Dark Speckled Witrick

*Deidra Bollinger Krantz*

Elizabethtown, PA

#### Pretty-Stitches Reign Maverick

LD3203816120 A2/A2

\*Dark Speckled Witrick (W-C)

#### PS Sparks Flavor-RED-OCP

LD3203816126

-Sold for Dairy as 2yr-old after calving

#### Peak Accelreign-ET

HO3131131506

#### Scarlet-Summer Gala Mercedes

LD69807306 GP-83

\*Dark Speckled Witrick

3-00 305 24698 3.5 860 3.0 731

#### Pretty-Stitches Ad Spark-RED

LD69807305

#### Darr-Lynn B Francine-RED

LD3134098092

**\*Direct Descendant of:**

**Plushanski Chief Faith EX-94**

## LOT 26

### Ayr-Back Nightmoves Bella-P-RED

LD172502885

Born 1/17/22

\*Dark Speckled Witrick

W-B

**Due 12/22/23 to**

**Goldcream Dutch Bluberry**

*Ayr-Back Farm*

Oxford, PA

#### Myline HB Night Moves 924-RED

LD3009902308

\*Dark Sided Witrick (W-B)

#### Ayr-Back Legend Beauty-RED

LD172750232

\*Gloucester (G-C)

1-09 275 15974 4.6 741 3.2 515

2-08 362 23211 4.4 1035 3.4 805

#### Maternal sister:

**Ayrback Ace Bonnie-P**

2-00 320 18402 4.3%F 3.2%P

**\*Grand Champion Youth East**

**Regional Lineback Show 2022**

**\*Grand Youth & Res. Open Lebanon**

**Area Fair 2022**

#### Burket-Falls Hartline-RED-P

LD3139410016

\*Dark Sided Witrick (W-C)

#### GR-Acres Halfback Frosty

LD17202061

\*Dark Sided Witrick (W-C)

#### Ayr-Back Ross Legend-RED

LD9315

\*Gloucester (G-B)

#### Bunny -crossbred

4-11 334 26568 4.2 1122 3.2 859

6-11 341 31956 4.1 1296 3.1 999

8-00 359 28377 4.0 1124 3.1 870

Lifetime 192757 4.1 7870 3.1 6066

## LOT 27

### TWB's Lilly's Ruby-RED

LD3205599172

Born 6/1/22

\*Gloucester

G-C

*Tim & Sue Bealmear*

Fawn Grove, PA

#### TWB's Red Propagator

LD172501694

\*Dark Sided Witrick (W-A)

#### TWB's Lilly-P

HO-Grade

#### TWB's Propagator

LD172501474

\*Gloucester (G-A)

#### TWB's Valentine

LD9271

\*Dark Sided Witrick (W-A)

---

## LOT 28

### Harnish FB Chrissy-RC

\*Reg. pending

Born 3/20/23

\*Dark Sided Witrick

W-A

*Tyson Harnish*

Lancaster, PA

#### GR-Acres HRTLN Fireball-P-RED

LD172502400

#### Harnish Phantom

HO-Grade

-milking 75 lbs/day

Sire: 7HO13334 Phantom

#### Burket-Falls Hartline-RED-P

LD3139410016

\*Dark Sided Witrick (W-C)

#### GR-Acres Halfback Frosty

LD17202061

\*Dark Sided Witrick (W-C)



**Sprout N Dreams Eddie Sage EX-91 EEEEE**  
(2nd Dam of Lot 29)

## LOT 29 \*MALE\*

### QT-Acres Surge-P

LD172502928

Born 7/6/22

\*Dark Speckled Witrick  
W-B

#### Genomics:

PL 6

Fertility 6

SCC 6

Dairy Form 8

Milk Yield 7

Fat 6

Protein 6

Beta Casein AA

Beta Lac AB

*Taylor Knight*  
Rising Sun, MD

### Ayrback Eli Casanova-P-RED

LD172502484

\*Dark Speckled Witrick (W-A)

### QT-Acres Sapphire

LD172501902

\*Dark Speckled Witrick (W-C)

2-04 313 20500 3.2 664 3.1 642

3-04 349 23758 2.9 694 3.2 759

4-08 265 19849 3.4 674 3.3 654

### Kag's Fullback Eli-P-RC

LD172502229

\*White Classic Witrick (W-B)

### Ayr-Back Marco Cupcake-RC

LD9059 EX-90

3-11 305 19997 3.7 743 2.7 542

### Kuszmar Blueberry Hill-RC

LD8618

\*Dark Classic Witrick (W-B)

### Sprout N Dreams Eddie Sage

BS68132312 EX-92 EEEEE

5-05 305 22275 4.1 913 3.3 739

6-09 340 23443 3.9 935 3.5 820

7-11 365 28700 4.3 1236 3.3 968

#### 3rd Dam:

ERG Terra Rose F Sheila-ET

GP-84 +VVV+

4-02 305 19080 3.8 732 3.1 600

#### 4th Dam:

Top Acres Dotson Shiny-ET

EX-91,3E EEEEE

8-00 305 31130 3.6 1108 3.4 1062

Lifetime 145970 4.6 6508 3.7 5376

\*HM All-Am Winter Yrlng 1992



### Three-Rivers Ion Adel EX-93

*\*Grand Champion ALCR Eastern Regional Lineback Show 2019  
(2nd Dam of Lot 30)*

## LOT 30 \*MALE\*

### Pretty Stitches Gen Ammunition

LD3239834044

Born 1/30/23

\*Dark Sided Witrick  
W-A

Deidra Bollinger Krantz  
Quarryville, PA

### Pretty-Stitches Cosmo General

LD3203816129

\*Dark Speckled Witrick (W-B)

### Pretty Stitches Platinum Annie

LD3203816124

\*Dark Sided Witrick (W-B)

1-10 305 16,000M

2-10 95 8558 4.2 357 3.2 272 RIP

Last test- 92 lbs 4.1%F 3.0%P

### Myline Fred Cosmo

LD6292

\*Classic Witrick (W-B)

### PS Spark Glee-RED-OCP

LD31340981123 EX-92

3-11 23673 3.8 900 2.8 657

### Myline Shotline Platinum-789

LD9285

\*Dark Sided Witrick (W-B)

### Three-Rivers Ion Adel

LD3008921437 EX-93

\*Dark Sided Witrick (W-C)

3-00 296 24947 3.0 740 3.0 744

4-00 288 24767 2.8 682 2.9 716

4-11 365 29781 3.6 1108 3.2 964

6-06 365 33789 3.8 1275 3.1 1077

LTD 133071 3.4 4515 3.1 4163

\*Still in herd & Due again in June

(Pictured above)

\*1st 5yr-old ALCR E. Reg. 2020

\*Grand Champion E. Reg. Show 2019

\*1st Jr 3 & Res. Grand Lebanon Fair 2018

\*Res. Grand ALCR E. Reg Show 2018

\*Grand Champion Lebanon Fair 2017



## LOT 31 \*MALE\*

**Goldcream Durline-TW**

\*Reg. pending

Born 6/13/22

\*Dark Sided Witrick

W-B

*Jonas Zeiset*  
Lewisburg, PA

**Keyenberg Durango**  
LDNLD584546949  
\*Dark Sided Witrick (W-C)

**Goldcream Cosmo Airline**  
LD172502011 VG-87  
\*Dark Sided Witrick (W-C)  
3-00 16228 4.6 749 3.0 489

**Keyenberg Linedancer**  
LDNLD717846135

**Keyenberg Sabena 4439**  
HONLD55844394

**Walnut Ridge Prince Charming**  
GU97001421

**J&E Zeiset Pilot Jetstream**  
LD 172501666 VG-85  
\*Dark Sided Witrick (W-C)  
1-11 14711 4.2 625 2.9 427

**3rd Dam:**  
**J&E Zeiset Halftica**  
**EX-91, 91-MS**  
Lifetime 112157 milk

**4th Dam:**  
**J&E Zeiset Shaztica**  
**EX-90**

---

## LOT 32 \*MALE\*

**Lyn-She Finn Lincoln**

\*Reg. pending

Born 6/14/22

\*Dark Sided Witrick

W-C

*Kalli Schwenk*  
Annville, PA

**Lyn-She Lyric Finn-RED**  
HO172502933

**Lyn-She Magnum Lola**  
LD172502182 VG-86  
\*White Classic Witrick  
2-01 proj. 305ME 19830M  
3-06 268 17200 4.1 700 3.2 544

**King-Lane Poip Lyric-RED**  
HO3140239126

**Lyn-She Ladd Fidget-RED**  
HO3130784703

**Lyn-She Mystic Magnum**  
LD172501203 EX-91  
\*Dark Sided Witrick

**Ayr-Back Russ Lola**  
LD8382 VG-87  
\*Dark Speckled Witrick (W-C)



**Pretty-Stitches Rage Sydni-RED EX-90**

*\*1st 4yr & Grand Champion ALCR East. Regional Show 2020  
(Dam of Lot 33)*



**Pretty-Stitches Advntg Scarlet-RED VG-88**

*\*2016 Eastern Regional Lineback Show - 1st Summer  
Yearling & Honorable Mention Jr Champ  
\*2016 Lebanon Area Fair - 1st Summer Yearling &  
Junior Champion  
(Dau. of the 3rd Dam of Lot 33)*

**LOT 33 \*Semen\***

**10 units of semen by:**

**Pretty-Stitches At Sylvester-RED**

Semen CODE: 120LD4074

LD3239834043

Born 12/4/2019

\*Dark Sided Witrick

W-C

aAa 432561

*\*Descends from more than 6 marked  
generations of linebacks!*

*\*All proceeds for Lot 33 semen are  
donated to Jr activities*

Deidra Bollinger Krantz  
Quarryville, PA

**Greenlea Artie-RED-ET**

HO65395083

**Pretty Stitches Rage Sydni-RED**

LD3134098111 EX-90

\*Dark Sided Witrick (W-C)

\*1st R&W Jr 3yr PA Farm Show 2020

\*1st 4yr-old Sr & Grand Champion

ALCR Eastern Regional Show 2020

**Dudoc Mr Burns-ET**

HOCAN100745543

**KHW Regiment Ariel-RED-ET**

HO135511512 VG-87

*\*FULL sister to KHW Regiment Apple  
EX-96,4E All-American*

**Ri-Val-Re Rager-RED**

HO72353457

**Pretty-Stitches Dem Shay Rouge**

LD3008921440 VG-86

\*Dark Speckled Witrick (W-C)

3-02 365 25744 3.8 967 3.6 922

\*Res. Jr Champ PA Farm Show 2014

\*Jr Champion Lebanon Fair 2013

\*1s Jr 2yr-old East Reg. Show 2014

**3rd Dam:**

**Pretty-Stitches Allstar Shania**

LD69050197 EX-90 (W-B)

Lifetime 111006M 3986F 3369P

*\*Extensive show record!*

**4th Dam:**

**Pretty-Stitches Chip Sprinkles**

LD6202 VG-86

Lifetime 160,000M 6100F 4600P

*\*Jr Champ Lebanon Fair 2007*

# LOT 34 \*Semen\*

10 units of semen by:

Dun-Did Mr Inavator P-ET\*RC

Harry Weier  
Deerfield, WI

All proceeds for Lot 34 semen are  
donated to Jr activities

# Inavator

{Polled & Red Factored}

**DUN-DID MR INAVATOR P-ET \*RC**

HO USA 14054178 96% :: DOB: 9-30-16 :: A1/A1 :: aAa: 561432

*sire*

**JA-BOB HALFBACK R-RED**

*dam*

**DUN-DID SENATOR ALEASHA EX-94-4E EX-94-MS**

sired by Nelacres Jobana Senator EX-91 Superior Type Sire  
9-00 2x 365d 30,574 4.0% 1,223F 3.1% 948P

*2nd dam*

**DUN-DID NORTHCROFT ARIES EX-90 EX-MS**

sired by Northcroft Admiral Citation EX Extra

2 EX & VG Daughters

Lifetime 121,427 3.2%F

*3rd dam*

**DUN-DID STARDUST ARIANA EX-91 EX-91 MS**

sired by Browndale Stardust EX Superior Type Sire

5-0 2x 365 30,805 3.7% 1,136F

*4th dam*

**DUN-DID SWANKY ARIEL EX-90-2E VG-89-MS**

sired by Dun-Did Swanky Dan VG-87 3 YRS (Astro Jet grandson  
of "Fashion Andrea" see below)

3-4 2x 39 24,404 4.1% 1,01F 3.6% 879P

2 EX Daughters

*5th dam*

**DUN-DID SENATOR ANNALOU EX-90-2E VG-88-MS**

sired by Nelacres Jobanna Senator EX-91 Superior Type Sire

8-6 2x 334 22,127 3.9% 862F 3.5% 774P

2 EX Daughters

*6th dam*

**DUN-DID TEMPO ANNALEA EX-90-2E EX-91 MS**

sired by Roybrook Temp EX Extra

2 EX Daughters

*7th dam*

**DUN-DID FASHION ANDREA EX-09-2E**

sired by Dun-Did Fashion Man EX-91

2 EX Daughters

*8th dam*

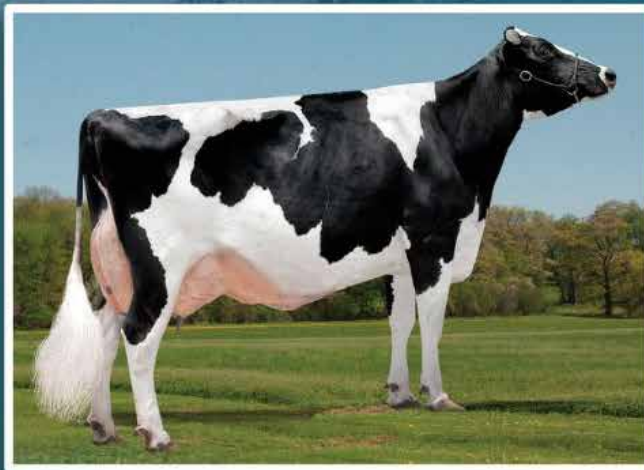
**HENNIGS ANIE EX-90-2E**

sired by Sandhurst Seiling Rocket

1 EX & 3 VG Daughters

*INAVATOR can be traced back 27 generations*

*in the Holstein herdbook to Inka 334 -imported in 1877*



INAVATOR'S 8TH GEN EX DAM - DUN-DID SENATOR ALEASHA EX-94-4E

for more information contact:

**DUN-DID HOLSTEINS** All we own we owe to udders

HARRY A WEIER :: 4274 WEIER LANE :: DEERFIELD WI 53531 :: TEL 608.698.2319



**LOT 35 \*Semen\***

*Nathan & Tajia Retzlaff*

10 units of semen by:

Shawano, WI

**Rayoli's Eclipse Prince Oliver**

# RAYOLI'S ECLIPSE PRINCE OLIVER

LDUSA000172502058

RED

DARK SIDED WITRICK / W-C

date of birth: Sep-28-2018



**54LD001**

*Eligible for EU Export*

Exportable to all Countries except China

A1A2

BLF,BYF,CDF,CVF,DPF,MFF

aAa 423516

PTA +682M +27F +21P 75%

sire: EMMERT JEDI ECLIPSE-RED-ET

HO840003136467733

dam: RAYOLI'S BERLIN PRINCESS KRISTEN

LD840003140084244

		VG-86		DARK SIDED WITRICK / W-C			
AGE	X	DAYS	MILK	%	FAT	%	PRT
1-11	3	305	30954	3.40	1038	2.9	902
		316	32082	3.36	1078	2.9	936
3-00	3	115	14885	3.23	481	3.4	509
LIFE-TD		431	46967	3.32	1559	3.1	1445

sire: DG BERLIN-RED-ET

HO840003124837855

dam: RAYOLI'S MAXIMUM ZMAS

LDUSA000172502057

		DARK SIDED WITRICK / W-B					
AGE	X	DAYS	MILK	%	FAT	%	PRT
5-08	3	305	34254	3.72	1274	3.1	1045
		311	34767	3.72	1293	3.1	1061
LIFE		1612	144985	3.63	5259	3.3	4730

sire: PROMISE-LANE MAXIMUM-RED

LDUSA000000004936

DARK SIDED WITRICK / W-C

dam: CENTURY MR NOAH MURIEL

LDUSA000000007964

DARK SIDED WITRICK / W-C

	MILK	%	FAT	%	PRT
LIFETIME	110769	3.71	4113	3.6	3958

Protein reported is crude protein.

*Retzlaff Century Farms*

**(920) 851-3068**

tab6954@yahoo.com



**LOT 36 \*Semen\***

**10 units of semen by:**

**Rayoli's Nightmove Jagger-P-RC**

*Nathan & Tajia Retzlaff*

Shawano, WI

# RAYOLI'S NIGHTMOVE JAGGER-P-RC

LD840003252583853

BLACK AND WHITE

DARK SIDED WITRICK / W-C

date of birth: Mar-24-2022



**54LD00003**

Conventional semen available

**A1A2, AB, AA, AB  
BLF,DPF,**

**aAa: 432516**

**JA-BOB HALFBACK-P-RED**

Sire: **MYLINE HB NIGHT MOVES 924-RED LD840003009902308**

**MYLINE GOURMET MILAN 752-RED**

**TJR DEDUCT RIGHT 54622-ET HO840003010353369**

Dam: **RAYOLI'S RIGHT 704 HO840003140084288**

AGE	X	DAYS	MILK	DCRM	%	FAT	%	PRT	DCRC
1-10	3	305	29262	4.18	1223	3.2	944		
		322	30901	4.18	1293	3.2	1003		
2-11	3	302	35472	4.54	1609	3.3	1187		
3-11	3	297	38119	4.44	1692	3.3	1257		
4-10	3	305	39600	4.37	1729	3.4	1331		
		363	44862	4.43	1988	3.4	1529		
-----									
LIFE-TD		1284	149354	4.41	6582	3.3	4977		

**RAYOLI'S ALTAWISEMAN 542 HO840003127401082**

Sire: **DE-SU ALTAWISEMAN-ET**

Dam: **RAYOLI'S SHOT 408**

Protein reported in crude protein



***Retzlaff Century Farms***

Shawano, WI

(920) 851-3068

tab6954@yahoo.com

## LOT 37 \*Semen\*

10 units of semen by:

*Jonas Zeiset*  
Lewisburg, PA

### Goldcream Dutch Invader-RED

LD172502250

Born 12/4/2019

\*Dark Speckled Witrick

W-B

aAa 3-1-5

### Dun-Did Mr Inavator-P-ET

LD144054178

\*Dark Sided Witrick (W-C)

\*See his flyer with Lot 34

### J&E-Zeiset Dutch Rose

LD172502011 EX-90, EX-MS

\*White Classic Witrick (W-B)

3-01 305 16515 4.0 668 2.8 455

### Ja-Bob Halfback-P-RED

LD7796

\*Dark Sided Witrick (W-C)

### Dun-Did Senator Alesha-ET

HO137371996 EX-94,4E (8th gen EX)

9-00 365 30574M 4.0%F 3.1%P

### J&E-Zeiset Dutch Myst

LD172501142

\*Dark Sided Witrick

### J&E-Zeiset Mary Rose

LD172501661 EX-92,EX-MS

\*Dark Sided Witrick (W-C)

1-11 14711 4.2 625 2.9 427

**3rd Dam: VG-85**

Lifetime 200,000 milk

**4th Dam: EX-90**

Lifetime 116,000 milk

---

## LOT 38 \*Semen\*

10 units of semen by:

*Kalli Schwenk*  
Annville, PA

### Lyn-She Inavator Loverboy

\*Reg. pending

\*Dark Sided Witrick

W-B

### Dun-Did Mr Inavator-P-ET

LD144054178

\*Dark Sided Witrick (W-C)

\*See his flyer with Lot 34

### Ayr-Back Russ Lola

LD8382 VG-87

\*Dark Speckled Witrick (W-C)

### Ja-Bob Halfback-P-RED

LD7796

\*Dark Sided Witrick (W-C)

### Dun-Did Senator Alesha-ET

HO137371996 EX-94,4E (8th gen EX)

9-00 365 30574M 4.0%F 3.1%P

### Plenty-Good Loverboy Russ-RC

LB7999

\*White Classic Witrick (W-B)

### Grade Holstein

## Sale Consignor Index

Ayr-Back Farm	4,17,26	Kirk, Ava	3
Bailey, Barnard	12,13,15	Knight, Taylor	29
Bealmear, Tim & Sue	21,22,27	Kopfer, Austin	5
Bollinger, Daryl & Ruby	10	Krantz, Deidra Bollinger	11,25,30,33
Burleigh, Jarrod & Marsha	1,2	Lehner, Wyatt	8
Dixon, Chris	16	Retzlaff, Nathan & Tajia	35,36
Doak, Samuel	18,19	Schenk, Kalli	14,32,38
Harnish, Tyson	6,28	Weier, Harry	34
Hartranft, Travis & Denise	23,24	Zeiset, Jonas	7,20,31,37
Hehner, Libby	9		

## **Terms and Conditions of Sale**

\*\*\*ALL out of State Buyers are Required to Show Proof of Bank Letter of Credit

**Terms of Sale:** Cash or PA Check are accepted forms of payment for in state buyers. Cash or Cashier's Check for out-of state-buyers. All payments must be made to the sale clerk immediately after the close of the sale. NO animal will be released until satisfactory settlement has been made with the clerk. Compliance with these terms of payment will then entitle buyer to guarantees offered.

**Bids:** The highest bidder shall be the buyer. In case of dispute, the animal may again be put up for an advance bid and if there is no advance bid, the animal shall be sold to the buyer the auctioneer accepted the last bid from.

**Risk/Responsibility:** Animals are at the seller's risk/responsibility prior to selling the animal. All animals are at the buyer's risk/responsibility as soon as struck off as sold.

**Warranties:** The seller warrants clear title to the animals and the right to sell the animal.

**Certificate of Registry:** All Certificates of Registry for eligible animals will be furnished to the buyer. The seller will be responsible for all fees and processing associated with the transfer and registration of all eligible animals. All cattle are to be registered with the ALCR with the exception of 2 week old or younger calves.

**Health:** Cattle have been vaccinated with a 9-way vaccine, with the exception of the bulls. It is STRONGLY recommended a 9-way booster be given approximately two weeks after the date of the sale, unless otherwise announced. Out of state buyers must have cattle tested, where applicable, at buyer's expense and risk. Every precaution will be taken to represent the physical condition of each animal exactly as it is known.

Announcements regarding health status or other conditions made on individual animals will be noted; no adjustments or returns will be allowed on these animals. NO guarantee is made concerning freedom from hardware, disease, mastitis or BVD or any other condition unless so announced at the time of the sale.

**Breeding:** All animals are either open or bred, each animal is a breeder to the best of the seller's knowledge and belief and have been checked normal. However, no breeding warranty is given or implied. There is no warranty or guarantee with regards to embryo transfer results on animals sold within this sale. Heifers that have never calved are in no way guaranteed as to their condition following calving. NO breeding dates or pregnancy can be guaranteed unless so announced at the time of the sale.

**Shipping:** Assistance will be given in shipping animals after the sale. All costs and risks will be the responsibility of the buyer.

**Accidents:** The auctioneer, sales management, ALCR and the seller will in no way be responsible for the behavior of the animals and disclaim any liability in the event of personal accident or property loss.

**Errors:** The material in this catalog has been carefully edited. If any errors or omissions are discovered, they will be announced; such announcements will take precedence over the matter of print in this catalog. Neither the editors of the catalog, the sales management, nor the seller can assume any responsibility for any errors or omissions in this catalog.



**Please Bring This Catalog to the Sale!**

Catalogs by:

***Daniel Brandt***   
PEDIGREES & MARKETING

167 Valley Lane, Annville, PA 17003

Ph: 717-821-1238 • E-mail: [brandtfive@comcast.net](mailto:brandtfive@comcast.net)